

# Olson's *Red Power*

## Performance Bull & Female Sale

At the ranch ~ Argusville, ND ~ Noon meal ~ 1:00 Sale

*Thursday* **Feb. 18, 2021** *Thursday*

### *Powerful Red Angus!*



### *Polled Herefords!*



### *62 Lots Selling!*

- 31 - Red Angus Bulls*
- 10 - Red Angus Heifers*
- 9 - Polled Hereford Bulls*
- 7 - Polled Hereford Heifers*
- 5 - Commercial RA heifers*

*Celebrating*  
**84 Years**  
*of excellence in  
registered cattle!*

## ~ General Sale Information ~

**Sale Time:** 1:00 CST, Thursday, February 18, 2021. Complimentary noon lunch.

**Location:** At the ranch. From Argusville on I-29: 7 West on Cass Co. #4, 1 North & ½ West. From Casselton on I-94: 10 North on ND #18, 5 West, 1 North & ½ East. 20 miles NW of Fargo.

**Motels:** Holiday Inn, Fargo 701-282-7200. Governors Inn, Casselton 888-847-4524.

**Airline Service:** Fargo Hector International Airport is served by United, American & Allegiant.

**Delivery:** Free delivery to central points up to 300 miles. We will work to facilitate further distances at cost. Take your bull home sale day and get \$50 off.

**Wintering:** We can keep your bull free of charge until April 1st, then we deliver.

**Guarantee:** All Cattle are fully guaranteed by the standards set by the American Red Angus and American Hereford Associations. Coming two-year-old and fall born bulls will be fertility checked prior to the sale. We will test yearlings before delivery of April 1st.

**Terms:** Terms of the sale are cash or check. Settlement must be made immediately following the sale before animals can be loaded out or delivered. Any corrections from the auction block or sale supplement sheet take priority over printed material in this sale catalog.

**Liability:** All attending the sale do so at their own risk. OHR assumes no responsibility for accident or injury.

**EPD's:** All EPDs are current as of Feb.1, 2021. As yearling weights, DNA results and scrotal measurements are recorded the EPDs may change by sale day. Registration numbers are provided so you can research animals further with the breed associations.

**Cattle on Display:** All sale cattle are at the ranch. We invite you to stop prior to the sale and look them over and visit with us. Many of the mothers and sires are also here. Videos of the sale offering with also be available at our website ahead of the sale. Cattle will be displayed in pens next to our heated sale facility. This is a video sale - cattle will not enter a sale ring.

**Herd Health:** Our herd is Johnes Free. All bulls will be tested for BVD. All cattle were Vaccinated and boosted with Bovi Shield Gold 5 and Ultra One Shot 7 at weaning. They Were poured with Ivomec at weaning and in December with CleanUp. Vet work supervised by Dr Darin Peterson, Casselton Vet Service - 800-216-9985.

**Supplement Sheet:** More info will be available prior to the sale including: Ribeye, Marbling, Back Fat, Scrotal cm and Pelvic Areas. Also at our website; [www.olsonredpower.com](http://www.olsonredpower.com).

**Mail or Phone Bids:** Bidders unable to make the sale may contact the Olsons or a sale staff member to assist in the bidding process. DVAuction will broadcast the sale live on the internet where you can watch and bid. Further info on that listed below.

### Sale Staff:

Kyle Gilchrist, Auctioneer.....641-919-1077  
 Kevin Murnin, AHA.....406-853-4638  
 Kelly Klein, Ringman .....701-320-5817  
 Kirby Goettsch, Farm & Ranch Guide.....605-380-3939  
 Logan Hoffmann, DVAuction.....701-388-2618  
 Nolan Woodruff, ARA-Commercial Marketing.....805-861-0996

Page	Catalog Index
2-14.....	Red Angus Bulls
16-17.....	Red Angus Reference Sires
18-21.....	Red Angus Heifers
21.....	Commercial RA Heifers
22.....	Polled Hereford Reference Sires
23-27.....	Polled Hereford Bulls
27-IBC.....	Polled Hereford Heifers

**This sale will be broadcast live on the internet.**



1. Create an account at [www.dvauction.com](http://www.dvauction.com) under the register tab.
2. Apply for bidding approval by clicking on the "details" tab at least 24 hours prior to the auction. A DV representative will notify you once you have been approved.
3. Tune in for the sale and make your purchases.
  - ~ High speed internet is required for successful bidding.
  - ~ Our full-time support team can be reached at 402-316-5460
  - ~ Or type a message to the operator during the sale.

Cattlemen,

*It's sale time again and we know there are many places you can go to buy bulls and heifers. We do appreciate you giving us a look! Every good bull starts with a really good mother - the more great cows you can stack in a pedigree the better and more predictable the bull will be. Genetic selection is made on a balance of multiple traits with performance as a priority. We take pride in developing the bulls on a roughage based ration to ensure they will be sound, problem free and have longevity. Finally we stand behind our cattle 100%.*

*This year's offering is smaller in numbers but the top end quality is still there. Many of the bulls are well suited for use on heifers!*

*We did not catalog any bred females this year but plan to have some Red Angus and Hereford bred females for sale privately. Also this year we did DNA the top cut of bulls for parentage and EPD enhancement. We don't have results yet but we will post new data when we get it.*

*Our family has been in the registered cattle business since 1936 and we are committed to providing you great Red Angus & Herefords that are productive, problem free and developed to last. Contact us if you have any questions.*

*Sincerely,  
The Olsons*

**Olson Family  
Cell Phones**

Edward...701-238-3601  
Carl.....701-361-0684  
Jeanne....701-866-5779  
Lindsay...701-388-5801  
Craig.....701-367-6704  
Caryn.....701-367-4434



*Jeanne & Edward*



*Jeanne, Ed & grandkids*



*Dru, Lindsay, Casey, Carl & Stetson*

**RED OHR ANGUS**

*Polled Herefords*

Ed & Jeanne Olson - Carl & Lindsay Olson  
16068 24th St SE - Argusville, ND 58005  
Email: olsoncandc@aol.com

Ed's cell 701-238-3601  
Carl's cell 701-361-0684

[www.olsonredpower.com](http://www.olsonredpower.com)

*Breeding High Quality Registered Cattle Since 1936!*

# ~ Red Angus 2 Year Old Bulls ~

## 1 **OHRR 97Z Copr Mahogany 15G**

15G OHRR      2/10/19      100% 1A      4208660

**OHRR 6W Copper Saga 149C**

Pie Saga 380

Sire

OHRR Sakic Lass 54P-6W

**OHRR 211T-5T Avalana 97Z**

OHRR Dakota Landmark 5T

Dam

OHRR 9502 Avalana 211T

EPDs:	
BW	1.5
WW	58
YW	94
Milk	27
Stay	14
Fat	-.01
REA	-.01
Marb	.07
Wts:	
BW	92
WW	604
YW	1042

*Very good 149C son with good shape, length of body and a great structure! Grandsire, Landmark 5T, was the valedictorian of his class with extra muscle, body and length - this guy's got it too. He's a lot like his sire who was high seller in 2018. We should have DNA results and GGP enhanced EPD's prior to sale.*



149C, sire of lot 1 >



## 2 **OHRR 153D TWG Vessel 153F**

153F OHRR      10/22/18      100% 1A      4208678

**TWG Vessel U63D**

Red Ringstead Kargo 215U

Sire

TWG 4L Ms Nora 263U

**OHRR 60Y Ms Shawnee 153D**

Six Mile Spencer 111B

Dam

OHRR 808 Trista of Wix 60Y

EPDs:	
BW	1.9
WW	72
YW	103
Milk	27
Stay	15
Fat	.01
REA	0
Marb	.20
Wts:	
BW	78
WW	794
1-28-20	1300

*Another big, powerful, long bodied 2 year old. Dam is a first calver that now has a 107 MPPA! The dam side traces back to the Wix family with 60Y at 102 MPPA and 808 at 105 MPPA! DNA on file confirms his parentage. We used him on heifers and young cows last year. If you like them big, dark and free moving he may be the bull for you!*



Grandmother of lot 2 >

Dam of herdsire OHRR 60Y Saga of Wix 155C



## ~ Red Angus Yearling Bulls ~

### 3 *OHRR Lana's Merlin 85Y 14H*

14H OHRR      2/10/20      100% 1A      4369459

<b>WFL Merlin 018A</b>	LJC Merlin T179
Sire	WFL Commitment 042Y
<b>OHRR 9010 Elle Lana 85Y</b>	OHRR Dakota Landmark 5T
Dam	LMG Welma 9010

<u>EPDs:</u>	
BW	-2.7
WW	68
YW	108
Milk	28
Stay	14
Fat	0
REA	.24
Marb	.38
<u>Wts:</u>	
BW	71
WW	681
YW	1183

*High performance, dark colored, well muscled bull from the popular sire Merlin. Dam is a powerful, productive, good uddered Landmark daughter with a 102 MPPA. 9010 granddam has 105 MPPA. We should have DNA GGP enhanced EPD's prior to sale. Could work for heifers too.*



Grandmother of lot 3 >



### 4 *OHRR Ballad 42D 18H*

18H OHRR      2/12/20      100% 1A      4369453

<b>OHR 23Y Hobo Lad 134E</b>	L83 Hobo 106
Sire	OHRR 32T-113 Annabelle 23Y
<b>OHRR 716 Bucks Ms Wix 42D</b>	Six Mile Buckshot 297B
Dam	Lucht Red Miss Wix 716

<u>EPDs:</u>	
BW	-2.7
WW	51
YW	78
Milk	24
Stay	17
Fat	.01
REA	-.01
Marb	.30
<u>Wts:</u>	
BW	69
WW	722
YW	1160

*Very long sided, really dark, well muscled and pushes the scale down at weaning and yearling too! Dam is a daughter of the very maternal Buckshot and boasts a 108 MPPA! Grandmother on top side is the great Annabelle 23Y - she's the reason we turned out 134E. DNA pending. Could also work for heifers.*



Grandmother of lot 4 >



## ~ Red Angus Yearling Bulls ~

### 5 *OHRR Valentino 152C 20H*

20H OHRR      2/14/20      100% 1A      4369435

<b>OHR 23Y Hobo Lad 134E</b>	L83 Hobo 106
Sire	OHRR 32T-113 Annabelle 23Y
<b>OHRR 97Z Sadie Ann 152C</b>	Pie Saga 380
Dam	OHRR 211T-5T Avalana 97Z

<u>EPDs:</u>	
BW	-1.5
WW	55
YW	87
Milk	28
Stay	17
Fat	.01
REA	-.12
Marb	.30
<u>Wts:</u>	
BW	78
WW	675
YW	1128

*Another good, correct son of Hobo Lad with good performance and from a very productive cow. She has a 104 MPPA and raised a \$7000 bull last year going to Roger Gibson in OK. 97Z grandmother is dam of lot 1. We sent in DNA on this one too. He should work for heifers too.*



Maternal brother to lot 5 >



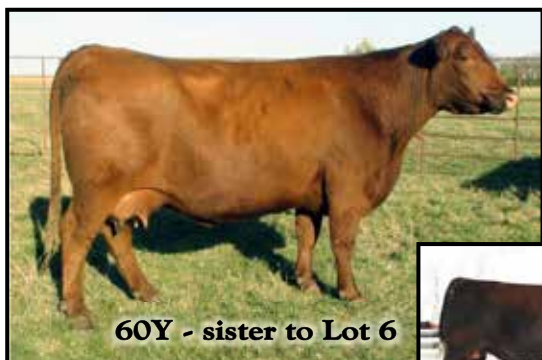
### 6 *OHRR Trustfund 808 21H*

21H OHRR      2/14/20      100% 1A      4369457

<b>Red Global Trust 21T</b>	LCC Above & Beyond 1300J
Sire	Red Global's Lakina 87R
<b>Lucht Miss Wix 808</b>	5L Norseman King 2291
Dam	Lucht Miss Wix 2612

<u>EPDs:</u>	
BW	0.1
WW	63
YW	98
Milk	26
Stay	16
Fat	.0
REA	.21
Marb	.26
<u>Wts:</u>	
BW	80
WW	589
YW	1046

*Full brother to our great 60Y donor who is also dam our of senior herdsire 155C! This guy is made very well with good length and dark color. Dam has a 104 MPPA and is still going at 13 years old with 5 daughters retained in our herd! DNA results pending for GGP EPD's.*



60Y is also dam of our herdsire OHRR 60Y Saga of Wix 155C.



## ~ Red Angus Yearling Bulls ~

### 7 *OHRR Powerful 110Y 26H*

26H OHRR      2/17/20      100% 1A      4369449

**KJHT Power Take Off**      Red Soo Line Power Eye 161X  
 Sire      SRA Paintbucket

**OHRR 49S Ruby Trista 110Y**      Red Global Trust 21T  
 Dam      OHRR 112H Advance Dyna 49S

EPDs:	
BW	0.8
WW	59
YW	104
Milk	19
Stay	17
Fat	0
REA	-.03
Marb	.12
Wts:	
BW	81
WW	575
YW	1106

*PTO son with a big hip, stout structure, darker color and from a very good trust daughter with a 103 MPPA! Maternal brother sold to Diamond C ND in our 2017 Red Power Sale. We sent in DNA on the top half of our RA bulls for parentage and GGP EPD's - he's in that bunch that was done.*



Maternal brother to lot 7 >



### 8 *OHRR Ladacious 155D 28H*

28H OHRR      2/18/20      100% 1A      4369479

**OHRR 23Y Hobo Lad 134E**      L83 Hobo 106  
 Sire      OHRR 32T-113 Annabelle 23Y

**OHRR 155D**      Six Mile Spencer 111B  
 Dam      OHRR 211T-5T Avalana 97Z

EPDs:	
BW	-1.1
WW	52
YW	80
Milk	24
Stay	18
Fat	0
REA	-.09
Marb	.22
Wts:	
BW	74
WW	701
YW	1076

*Good heifer bull here! Dam is a first calf heifer that earned a 106 MPPA for her job raising this one! Granddam on bottom is mother of great lot one bull in this sale. I expect his WW and YW EPDs to go up by sale day as he is one of our heavier 205 day weight bulls.*

Videos of the sale offering  
 will be posted on our website:  
[www.olsonredpower.com](http://www.olsonredpower.com)

*Olson's Red Power Advantage:*

- + *More performance, muscle & maternal excellence.*
- + *Bulls tested for BVD & from Johnes Free herd.*
- + *Bulls developed on roughage ration to ensure soundness.*
- + *Free wintering on bulls over \$2500, 300 mile delivery.*
- + *\$50 discount if you take your bull home sale day.*
- + *Reputation breeder of quality registered cattle since 1936!*

## ~ Red Angus Yearling Bulls ~

9	<i>OHRR Power Up 75Y 31H</i>			
	31H OHRR	2/19/20	100% 1A	4369439
<b>KJHT Power Take Off</b>		Red Soo Line Power Eye 161X		
Sire		SRA Paintbucket		
<b>OHRR 25R Copper Lana 75Y</b>		OHRR 107J Landslide 113R		
Dam		OHRR 42L Copper Honey 25R		

<u>EPDs:</u>	
BW	-0.1
WW	53
YW	89
Milk	25
Stay	18
Fat	.01
REA	.09
Marb	.04
<u>Wts:</u>	
BW	80
WW	583
YW	1090

*Long bodied, well muscled, dark colored PTO son. Should be good maternally also with Annabelle, Dakota Copper and Mac's Honey on the bottom side. PTO was 2019 Champion Bull in Ft Worth owned by Lodoens in ND. DNA results pending.*



10	<i>OHRR Aladdin 157D 38H</i>			
	38H OHRR	2/21/20	100% 1A	4369441
<b>OHRR 23Y Hobo Lad 134E</b>		L83 Hobo 106		
Sire		OHRR 32T-113 Annabelle 23Y		
<b>OHRR 141A Ms Shawnee 157D</b>		Six Mile Spencer 111B		
Dam		OHRR 63T Gold Vanna 141A		

<u>EPDs:</u>	
BW	-0.7
WW	51
YW	79
Milk	23
Stay	18
Fat	.01
REA	-.13
Marb	.25
<u>Wts:</u>	
BW	76
WW	612
YW	1094

*Stout made bull with good muscling and volume. Should be a good bull for heifers also like his sire and grandsire. DNA pending on this one also. The Hobo Lad calves were all pretty good off a variety of different cow families!*



2021 Red Angus Breed EPD averages -(Non Parent)							
BW	WW	YW	Milk	Stay	Marb	REA	Fat
-1.8	59	94	25	15	.41	.11	.02



# ~ Red Angus Yearling Bulls ~

## 11 *OHRR Game Day 142A 39H*

39H OHRR      2/21/20      100% 1A      4369451

**Pie Game Plan 0618**

VGW Game Plan 508

Sire

Pie Prime Canyon 927

**OHRR 95R Mohagny Trista 142A**

OHRR 58R Gold Trust 39X

Dam

OHRR 15L Dak Mahogany 95R

### EPDs:

BW 0.2  
WW 61  
YW 93  
Milk 31  
Stay 16  
Fat .02  
REA -.18  
Marb .40

### Wts:

BW 88  
WW 750  
YW 1189

*Extra performance, muscle shape, length and power! Dam is a perfect uddered, medium sized, very attractive daughter of the \$21,000 Gold Trust with a 108 MPPA! Game Plan made powerful bulls and great females so we have used him more. DNA results pending.*



**Lot 11**

## 12 *OHRR Attaboy 81D 43H*

43H OHRR      2/22/20      100% 1A      4369431

**DCND Oh Boy 1810**

Red NL Crush 16B

Sire

Damar Oh Baby W168

**OHRR 3Y-53W Sweet Beca 81D**

Six Mile Buckshot 297B

Dam

OHRR 53W Sweet Anabel 3Y

### EPDs:

BW -1.4  
WW 51  
YW 78  
Milk 32  
Stay 15  
Fat .03  
REA .02  
Marb .37

### Wts:

BW 76  
WW 646  
YW 1183

*One of our best bulls - he was pictured earlier and has gained alot since then. Sire is a maternal brother to National Champion Trump! Dam is a very good, moderate sized young cow with 108 MPPA and grandmother is one notch better at 109! Should be safe to use on heifers and should breed more performance than EPD's show. DNA results to come.....*



**Lot 12**

## ~ Red Angus Yearling Bulls ~

### 13 *OHRR Ironclad 127E 47H*

47H OHRR      2/24/20      100% 1A      4369443

<b>OHRR 23Y Hobo Lad 134E</b>	L83 Hobo 106
Sire	OHRR 32T-113 Annabelle 23Y
<b>OHRR 113A-Mahgy Siri 127E</b>	Pie Saga 380
Dam	OHRR 14M-Hic Magogny 113A

EPDs:	
BW	-0.3
WW	57
YW	92
Milk	26
Stay	16
Fat	.01
REA	-.11
Marb	.30
Wts:	
BW	80
WW	581
YW	1065

*Complete, well built son of Lad that could work for heifers! Dam side traces to High Capacity and 14M - Supreme Champion at the ND Winter Shows and a proud member of our famous Mahogany cowfamily! DNA coming in on this one also.*



**Lot 13**

### 14 *OHRR Roll Tide 40Z 49H*

49H OHRR      2/25/20      100% 1A      4369433

<b>Bar-E-L High Tide 63C</b>	Red U-2 Justified 235Z
Sire	Red Bar-E-L Bessie 91W
<b>OHRR 146T-72X Annabelle 40Z</b>	OHRR 513 Dakota Trust 72X
Dam	OHRR Copper Annabelle 146T

EPDs:	
BW	2.1
WW	68
YW	105
Milk	30
Stay	17
Fat	0
REA	.02
Marb	.22
Wts:	
BW	96
WW	718
YW	1201

*Powerful, high performing, big volume and shapely muscled son of the National Reserve Calf Champion in Denver 2016. Dam side has Trust, Dakota Copper and Annabelle - OHR legends! Dam has a 111 MPPA and granddam is 108! DNA to come.....*



**Lot 14**

## ~ Red Angus Yearling Bulls ~

**15** ***OHRR Ladino 33D 55H***  
 55H OHRR      2/29/20      100% 1A      4369477

**OHRR 23Y Hobo Lad 134E**      L83 Hobo 106  
 Sire      OHRR 32T-113 Annabelle 23Y

---

**OHRR 808 Buck's Ms Wix 33D**      Six Mile Buckshot 297B  
 Dam      Lucht Miss Wix 808

*Heifer Bull! Complete, good structured son of Hobo Lad who was used on heifers just like his sire Hobo 106. This guy is stacked maternally also with Buckshot, 808 and Annabelle!*

EPDs:	
BW	-0.8
WW	56
YW	86
Milk	25
Stay	17
Fat	.0
REA	.15
Marb	.19
Wts:	
BW	77
WW	628
YW	1018

**16** ***OHRR Gemstone 12D 58H***  
 58H OHRR      3/02/20      100% 1A      4369471

**OHRR 60Y Saga of Wix 155C**      Pie Saga 380  
 Sire      OHRR 808 Trista of Wix 60Y

---

**OHRR 7300-9010 Ms Gemma 12D**      Pie Game Plan 0618  
 Dam      LMG Miss Welma 7300

*Well made son of our senior herdsire 155C. Dam is a very nice daughter of Game Plan out of 7300 who is still in our herd at 14 years old and with a 104 MPPA! Should develop into a great herdsire like his father.*

EPDs:	
BW	1.3
WW	69
YW	108
Milk	31
Stay	12
Fat	.01
REA	.09
Marb	.32
Wts:	
BW	89
WW	576
YW	1020



Grandmother of 16 >



**17** ***OHRR Cowboy 93E 60H***  
 60H OHRR      3/04/20      100% 1A      4369445

**DCND Oh Boy 1810**      Red NL GAF Crush 16B  
 Sire      Damar Oh Baby W168

---

**OHRR 34W HT Anabell 93E**      Bar-E-L High Tide 63C  
 Dam      OHRR Diva Anabelle 9S-34W

*Heifer Bull! Complete March bull that is correct and smoother in his design. Sire has a lot of Canadian breeding so the EPDs are not as powerful as they should be. Bottom of pedigree looks really strong for performance and maternal with High Tide and Annabelle!*

EPDs:	
BW	-1.2
WW	49
YW	76
Milk	25
Stay	13
Fat	.02
REA	-.12
Marb	.35
Wts:	
BW	70
WW	600
YW	1100

## ~ Red Angus Yearling Bulls ~

### 18 *OHRR Seneca 17D 66H*

66H OHRR      3/06/20      100% 1A      4369455

<b>RREDS Seneca E709</b>	RREDS Seneca 731C
Sire	Bieber Tilly 139S
<b>OHRR 66B Bucks Syrie 17D</b>	Six Mile Buckshot 297B
Dam	OHRR 43X KR Ms Syringa 66B

*Good performance bull here that shoulda been pictured! Dam is a very good daughter of Buckshot who has left us with lots of really nice daughters. This one traces back to 43X - still going stron in our herd with a 109 MPPA! DNA submitted also.*

EPDs:	
BW	1.0
WW	66
YW	111
Milk	27
Stay	16
Fat	.02
REA	.20
Marb	.26
Wts:	
BW	82
WW	709
YW	1149

### 19 *OHRR Sagamore 108R 67H*

67H OHRR      3/06/20      100% 1A      4369437

<b>OHRR 60Y Saga of Wix 155C</b>	Pie Saga 380
Sire	OHRR 808 Trista of Wix 60Y
<b>OHRR 310 Flo Fayet 108R</b>	OHRR 6H Explorer 97N
Dam	SSR Flo-Marie 310-185

*Another well made son of our senior herdsire 155C. Dam raised this bull at 15 years old to nearly 600 pounds! Great old school genetics that traces to the famous Flo-Marie on the bottom.*

EPDs:	
BW	-0.9
WW	52
YW	81
Milk	29
Stay	15
Fat	.0
REA	-.13
Marb	.22
Wts:	
BW	80
WW	588
YW	1028

### 20 *OHRR Senecah 10Y 69H*

69H OHRR      3/06/20      100% 1A      4373251

<b>RREDS Seneca E709</b>	RREDS Seneca 731C
Sire	Bieber Tilly 139S
<b>OHRR 141T Copper Trista 10Y</b>	Red Global Trust 21T
Dam	OHRR Copper Sharee 2M-141T

*Nice bull with balanced EPDs out of our Seneca son. Very good dam side for maternal with Trust and Copper Rob. 141T grandmother has a 104 MPPA and 2M (pictured below) is at 109!*

EPDs:	
BW	-1.3
WW	57
YW	97
Milk	27
Stay	19
Fat	.02
REA	.06
Marb	.22
Wts:	
BW	84
WW	516
YW	931



**2M**

**Great grandmother to lot 20**



**21C**

**Maternal sister to lot 20**

## ~ Red Angus Yearling Bulls ~

**21**      ***OHRR Senator 18A 74H***  
 74H OHRR      3/09/20      100% 1A      4369467

**RREds Seneca E709**      RREds Seneca 731C  
 Sire      Bieber Tilly 139S

---

**OHRR 110Y-GP Ms Gemma 18A**      Pie Game Plan 0618  
 Dam      OHRR 49S Ruby Trista 110Y

EPDs:	
BW	0.6
WW	68
YW	118
Milk	24
Stay	16
Fat	.02
REA	.06
Marb	.44
Wts:	
BW	82
WW	577
YW	996

*A very well balanced, good made bull with enough muscle and volume. Dam and grandmother both have a 103 MPPA and are high volume, good uddered and attractive! Should develop into a really good sire!*



**22**      ***OHRR Sagacity 102B 82H***  
 82H OHRR      3/12/20      100% 1A      4369473

**OHRR 60Y Saga of Wix 155C**      Pie Saga 380  
 Sire      OHRR 808 Trista of Wix 60Y

---

**OHRR 99W Dk. Kruger 102B**      Six Mile Kruger 11Z  
 Dam      OHRR Foxy Anna 22L-99W

EPDs:	
BW	2.2
WW	63
YW	98
Milk	29
Stay	18
Fat	0
REA	.04
Marb	.28
Wts:	
BW	94
WW	683
YW	1062

*Good, complete son of the powerful 155C herdsire. Dam is a powerful high volume cow that consistently does well. 99W granddam is much the same and is also still in our herd with 102 MPPA. 22L the next generation back carried a 108 MPPA with super udder quality.*

**23**      ***OHRR Bellringer 155C 146T 86H***  
 86H OHRR      3/15/20      100% 1A      4369461

**OHRR 60Y Saga of Wix 155C**      Pie Saga 380  
 Sire      OHRR 808 Trista of Wix 60Y

---

**OHRR Copper Annabelle 146T**      OHRR Dakota Copper 29K  
 Dam      SHHM Annabelle 107J

EPDs:	
BW	2.7
WW	70
YW	105
Milk	33
Stay	19
Fat	0
REA	.06
Marb	.23
Wts:	
BW	96
WW	676
YW	1157

*Another really good son of the powerful 155C herdsire. Dam is one of our very best 29K daughters ever - maybe cause she's a daughter of Annabelle 107J! Beautiful to look at, wonderful udder quality and a 108 MPPA! She produced this bull at 14 year old. DNA pending.*

## ~ Red Angus Yearling Bulls ~

### 24 ***OHRR Powerhouse 60A 88H***

88H OHRR      3/15/20      100% 1A      4369447

**KJHT Power Take Off**      Red Soo Line Power Eye 161X  
 Sire      SRA Paintbucket

**OHRR 146T Tristee Ana 60A**      OHRR 58R Gold Trust 39X  
 Dam      OHRR Copper Annabelle 146T

EPDs:	
BW	2.7
WW	63
YW	105
Milk	25
Stay	19
Fat	.02
REA	-.07
Marb	.11
Wts:	
BW	98
WW	639
YW	1145

*Correct, well muscled, long sided PTO son with lots of style. Dam is a very good daughter of the \$21,000 Gold Trust from one of our very best 29K daughters ever - 108 MPPA. Same great cowfamily as lot 22. DNA pending here also.*



### 25 ***OHRR Homestead 60F 91H***

91H OHRR      3/17/20      100% 1A      4369469

**H/H Big Timber 8061**      Weber Homestead 639  
 Sire      Weber Worth It 560

**OHRR 4A - Mahogany Lass 60F**      TWG Vessel U63D  
 Dam      OHRR 84Y-GP Ms Mahgny 4A

EPDs:	
BW	-1.1
WW	59
YW	88
Milk	27
Stay	18
Fat	.02
REA	-.07
Marb	.24
Wts:	
BW	70
WW	669
YW	1123

*Heifer bull with a good smooth pattern, balanced weights and the great Mahogany cowfamily to back it all up! Dam is a solid first calf heifer from our senior herdsire Vessel with a 104 MPPA. Grandmother 4A is a great Game Plan daughter with a 110 MPPA. Many great females backing this cow family.*



**Grandmother of lot 25**



**Great Granddam of lot 25**

## ~ Red Angus Yearling Bulls ~

### 26 *OHRR Diamond 82E 97H*

97H OHRR      3/19/20      100% 1A      4373261

<b>DCND Oh Boy 1810</b>	Red NL GAF Crush 16B
Sire	Damar Oh Baby W168
<b>OHRR 71Y HT Ms Classy 82E</b>	Bar-E-L High Tide 63C
Dam	OHRR 39R Classy 71Y

*Nicely made son of our junior herdsire Oh Boy who is a maternal brother to National Champion Trump. Dam is a good young daughter of Denver Reserve Bull Calf Champion High Tide. Granddam 71Y has a 105 MPPA. All the tools are in place for a good herdsire.*

EPDs:	
BW	0.1
WW	53
YW	81
Milk	25
Stay	15
Fat	.02
REA	-.11
Marb	.31
Wts:	
BW	86
WW	608
YW	1025

### 27 *OHRR Esseneca 4D 100H*

100H OHRR      3/21/20      100% 1A      4369481

<b>RREds Seneca E709</b>	RREds Seneca 731C
Sire	Bieber Tilly 139S
<b>OHRR 8001 Ms Essence 4D</b>	L83 Hobo 106
Dam	LMG Miss Essence 8001

*Complete, well balanced Seneca son from a dam side that traces back to Mullberry and the powerful Essence cow that won Agribition! Granddam 8001 produced many high sellers and always puts an attractive look on her progeny. This guy will also have DNA results coming in.*

EPDs:	
BW	0.2
WW	57
YW	97
Milk	21
Stay	17
Fat	.02
REA	-.01
Marb	.27
Wts:	
BW	85
WW	657
YW	1067



**Lot 27**

### 28 *OHRR Boycott 3E 103H*

103H OHRR      3/23/20      100% 1A      4369475

<b>DCND Oh Boy 1810</b>	Red NL GAF Crush 16B
Sire	Damar Oh Baby W168
<b>OHRR 85W Mahgy of Wix 3E</b>	OHRR 808-GP Red Wix 43C
Dam	OHRR 122T Mahogany Ana 85W

*Good growth, performance, length and correctness in this Oh Boy son! Dam traces to powerful sires Game Plan and Red Dawg along with the great mahogany family. On track to become a performance herdsire!*

EPDs:	
BW	2.4
WW	67
YW	104
Milk	28
Stay	13
Fat	.01
REA	.13
Marb	.29
Wts:	
BW	94
WW	644
YW	1169

## ~ Red Angus Yearling Bulls ~

### 29 *OHRR Sensation 99Y 119H*

119H OHRR      3/26/20      100% 1A      4369485

<b>RREds Seneca E709</b>	RREds Seneca 731C
Sire	Bieber Tilly 139S
<b>OHRR 110T Mahogany Trista 99Y</b>	Red Global Trust 21T
Dam	OHRR 63G Kimas Mahogany 110T

*Another good Seneca son born towards end of March. Dam side is loaded with powerful, high volume, heavy milking females from the Mahogany family.*

<u>EPDs:</u>	
BW	-0.5
WW	58
YW	99
Milk	24
Stay	18
Fat	.03
REA	.02
Marb	.36
<u>Wts:</u>	
BW	80
WW	636
YW	1089

### 30 *OHRR Sagator 0124 124H*

124H OHRR      3/30/20      100% 1A      4369487

<b>OHRR 60Y Saga of Wix 155C</b>	Pie Saga 380
Sire	OHRR 808 Trista of Wix 60Y
<b>LRA Ms Monu 0124</b>	LRA Monu 690
Dam	MJ Miss Judy 92P

*Combines the power, performance and shape of 155C and the high volume, easy keeping, maternal points of 0124 into a pretty complete package. Good length and growth in this end of March bull.*

<u>EPDs:</u>	
BW	0.8
WW	64
YW	97
Milk	31
Stay	17
Fat	.0
REA	-.02
Marb	.26
<u>Wts:</u>	
BW	85
WW	657
YW	1067



**0124**

Dam of lot 30



**124F**

Sister to lot 30

### 31 *OHRR Spencer 141C 133H*

133H OHRR      4/04/20      100% 1A      4369489

<b>Six Mile Spencer 111B</b>	MRLA New Era 87Y
Sire	Red Six Mile Shawnee 116T
<b>OHRR 113A-67A Mahgny 141C</b>	OHRR 28R Mack's Vic 114A
Dam	OHRR 14M-Hic G Magogny 113A

*Complete, long bodied and well muscled April bull with all the bells and whistles. Dam has a 103 MPPA and is supported by the high volume, heavy milking Mahogany cowfamilies. Should develop into a great sire!*

<u>EPDs:</u>	
BW	0.1
WW	49
YW	73
Milk	23
Stay	14
Fat	0
REA	.01
Marb	.17
<u>Wts:</u>	
BW	84
WW	639
YW	1065





# A-BAG-A-BULL

If you purchase a bull from us, we will provide you with credit equal to the value of one bag of Feeder Calf Certification Program or Allied Access tags for each bull you purchase. To redeem your credit, bring your receipt for the tags to next year's sale and we will apply it to your bull purchase.

The FCCP provides age, source and genetic verification for calves sired by registered Red Angus bulls. Cattle enrolled in the FCCP are accepted into the exclusive Choice+ and G.O. Red grids. The FCCP 'yellow tags' are recognized by buyers nationwide and return a premium for Red Angus calves enrolled in the program.

The Allied Access program provides age and source verification for commercial cattlemen whose bull battery does not exclusively contain registered Red Angus bulls. Whether you are utilizing multiple sire breeds or halfblood bulls, enrolling in Allied Access demonstrates to buyers that you are taking an extra step in marketing your calves and adding value throughout the production chain.

To enroll in the FCCP or Allied Access, contact the Red Angus marketing department. Enrollment is simple and free of charge.

**RedAngus.org • 940-477-4593**

**RED ANGUS**  
RANCH TESTED. RANCHER TRUSTED.

# ~ Red Angus Reference Sires ~



EPDs:	
BW	-0.6
WW	66
YW	109
Milk	25
Stay	21
Fat	.03
REA	-.19
Marb	.38
Wts:	
BW	84
WW	834
YW	1410

**Red Global Trust 21T - 2 years**

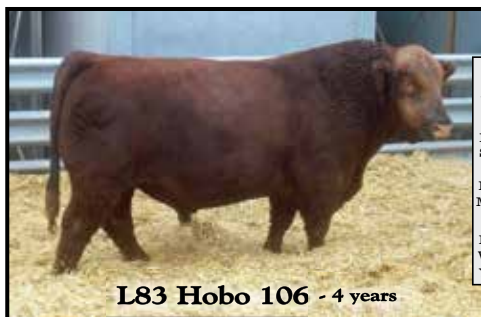
*LCC Above & Beyond 1300S \* Milk Crk Cub 722*



EPDs:	
BW	0.7
WW	70
YW	110
Milk	36
Stay	12
Fat	.01
REA	.0
Marb	.55
Wts:	
BW	68
WW	727
YW	na

**Pie Game Plan 0618 - 16 months**

*VGW Game Plan 508 \* Buf Crk Chf 824-1658*



EPDs:	
BW	-1.5
WW	52
YW	79
Milk	22
Stay	21
Fat	.02
REA	-.39
Marb	.38
Wts:	
BW	84
WW	681
YW	1195

**L83 Hobo 106 - 4 years**

*Buf Crk Hobo 1961 \* Red Fine Line Mulberry 26P*



EPDs:	
BW	1.7
WW	52
YW	77
Milk	26
Stay	12
Fat	-.02
REA	.03
Marb	.08
Wts:	
BW	86
WW	826
YW	na

**Six Miles Spencer 111B - 1 year**

*MRLA New Era 87Y \* 5L Norseman King 2291*



EPDs:	
BW	1.5
WW	72
YW	110
Milk	27
Stay	13
Fat	.0
REA	.43
Marb	.18
Wts:	
BW	82
WW	849
YW	na

**Six Mile Buckshot 297B - 1 year**

*XO Crowfoot 0102X \* Red SSS Ole 746P*

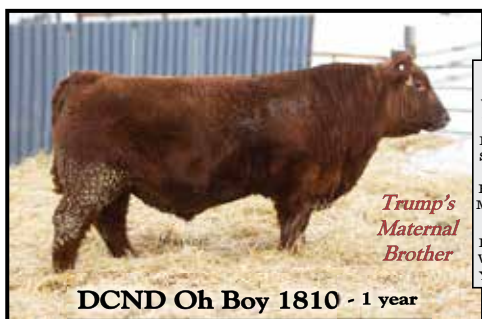
# ~ Red Angus Reference Sires ~



**Six Mile Encarnacion 866E - 1 year**

*Red U-2 Reoning 149A \* Red Six Mile Travelocity 318X*

EPDs:	
BW	-3.3
WW	63
YW	93
Milk	33
Stay	15
Fat	.02
REA	-.14
Marb	.33
Wts:	
BW	68
WW	618
YW	1206



**DCND Oh Boy 1810 - 1 year**

*Red NL Gaf Crush 168 \* Red Fine Line Mulberry 26P*

EPDs:	
BW	-1.2
WW	41
YW	61
Milk	27
Stay	12
Fat	.03
REA	-.27
Marb	.40
Wts:	
BW	87
WW	711
YW	1267



**Bar-E-L High Tide 63C - 1 yr**

*Red U-2 Justified 235Z \* Red SVR Jack 65S*

EPDs:	
BW	0
WW	67
YW	107
Milk	22
Stay	15
Fat	.01
REA	-.02
Marb	.28
Wts:	
BW	na
WW	818
YW	na



**RREDs Seneca E709 - 1 yr**

*RREDs Sneca 713C \* Bieber Romeo 9477*

EPDs:	
BW	0.4
WW	64
YW	116
Milk	25
Stay	15
Fat	.03
REA	.23
Marb	.37
Wts:	
BW	88
WW	702
YW	1270



**OHRR 60Y Saga of Wix 155C**

*Pie Saga 380 \* Red Global Trust 21T*

EPDs:	
BW	1.3
WW	70
YW	111
Milk	31
Stay	15
Fat	.0
REA	.09
Marb	.34
Wts:	
BW	75
WW	849
YW	na

## ~ Red Angus Yearling Heifers ~

### 32 *OHRR Lady 154D 17H*

17H OHRR      2/12/20      100% 1A      4369889

**OHRR 23Y Hobo Lad 134E**      L83 Hobo 106  
 Sire      OHRR 32T-113 Annabelle 23Y

**OHRR 107Y Ms Shawnee 154D**      Six Mile Spencer 111B  
 Dam      OHRR 55R-228 Tiffany 107Y

*Fancy February heifer that is very correct, long sided and goes back to 2 of our top cows 107Y and 23Y. Dam is one of our better Spencer daughters with a 103 MPPA.*

EPDs:	
BW	0.2
WW	53
YW	81
Milk	27
Stay	19
Fat	.0
REA	-.07
Marb	.20
Wts:	
BW	73
WW	608
YW	886



**Lot 32**

Grandam to lot 32 ->



**107Y**

### 33 *OHRR Queen B 32F 24H*

24H OHRR      2/16/20      100% 1A      4373171

**DCND Oh Boy 1810**      Red NL GAF Crush 16B  
 Sire      Damar Oh Baby W168

**OHRR 211U-Copr Queen 32F**      Bar-E-L High Tide 63C  
 Dam      OHRR Dkota Copper Queen 211U

*Moderate, stout made heifer with good natural thickness. Dam is a first calf heifer who has done a nice job. Grandmother 211U is a full sister to Dakota Copper 29K and holds a 103 MPPA. High tide was Reserve Champion Bull Calf in Denver. Sire is Full brother to Denver Champion Trump!*

EPDs:	
BW	-2.9
WW	46
YW	69
Milk	27
Stay	14
Fat	.02
REA	-.14
Marb	.28
Wts:	
BW	56
WW	593
YW	937

### 34 *OHRR Scarlett E709 51E 112H*

112H OHRR      3/24/20      100% 1A      4373219

**RREDs Seneca E709**      RREDs Seneca 731C  
 Sire      Bieber Tilly 139S

**OHRR 113Y Scarlet Gemma 51E**      Pie Game Plan 0618  
 Dam      OHRR 15M Scarlet Lana 113Y

*End of March heifer with a good pattern, high volume and an attractive look. Seneca's are a pretty uniform sire group with good growth. With Game Plan, Annabelle and the Scarlet family she should be a productive, good uddered cow!*

EPDs:	
BW	1.2
WW	66
YW	106
Milk	30
Stay	17
Fat	.02
REA	.04
Marb	.34
Wts:	
BW	83
WW	574
YW	881

## ~ Red Angus Yearling Heifers ~

### 35 *OHRR Blaze 866E 33F 48H*

48H OHRR      2/24/20      100% 1A      4369893

<b>Six Mile Encarnacion 866E</b>	Red U-2 Reckoning 149A
Sire	Red Six Mile Sexy Syringa 60
<b>OHRR 131C Blazin Tina 33F</b>	OHRR 17W Dak Buckshot 54D
Dam	OHRR 0710 Blazin Tina 131C

*Stout made, correct heifer with good natural muscling and body. Dam is a very nice first calf heifer from the powerful 54D sire with a 104 MPPA. Her mother has a 107 MPPA!*

EPDs:	
BW	-1.6
WW	65
YW	98
Milk	31
Stay	18
Fat	.02
REA	.05
Marb	.28
Wts:	
BW	69
WW	642
YW	1023



### 36 *OHRR Diamond 113E 72H*

72H OHRR      3/07/20      100% 1A      4373205

<b>DCND Oh Boy 1810</b>	Red NL GAF Crush 16B
Sire	Damar Oh Baby W168
<b>OHRR 142A 106 Mahgny 113E</b>	L83 Hobo 106
Dam	OHRR 95R Mahogany Trista 142A

*March heifer that is very correct, complete and from a very good 3 year old. 142A grandmother has a beautiful udder, is ideal sized and high volume with a 108 MPPA and sire by the \$21,000 Gold Trust.*

EPDs:	
BW	-2.0
WW	41
YW	58
Milk	26
Stay	17
Fat	.02
REA	-.36
Marb	.34
Wts:	
BW	70
WW	559
YW	814

### 37 *OHRR Diamond Lil 135F 84H*

84H OHRR      3/14/20      100% 1A      4373211

<b>DCND Oh Boy 1810</b>	Red NL GAF Crush 16B
Sire	Damar Oh Baby W168
<b>OHRR 34W Siri Anna B 135F</b>	Pie Saga 380
Dam	OHRR Diva Annabelle 9S-34W

*Fancy March heifer from the stout made, heavy muscled junior herdsire Oh Boy! Dam is a moderate first calver the traces to Annabelle and Dakota Copper 29K - productive, time tested genetics.*

EPDs:	
BW	-0.5
WW	43
YW	64
Milk	27
Stay	15
Fat	.02
REA	-.22
Marb	.34
Wts:	
BW	74
WW	563
YW	841

## ~ Red Angus Yearling Heifers ~

### 38 *OHRR Scarlett 8061 41F 94H*

94H OHRR      3/19/20      100% 1A      4373213

<b>H/H Big Timber 8061</b>	Weber Homestead 639
Sire	Weber Worth It 560
<b>OHRR 131Y Bks Scarlet 41F</b>	OHRR 17W Dak Buckshot 54D
Dam	OHRR 95R Skrlt Trista 131Y

*High quality, deep ribbed March heifer from a first calver. Dam is sired by high performance Buckshot 54D and traces to Trust, Dakota Copper and the great Mahogans.*

<u>EPDs:</u>	
BW	-1.8
WW	58
YW	86
Milk	26
Stay	20
Fat	.01
REA	-.06
Marb	.21
<u>Wts:</u>	
BW	66
WW	472
YW	858

### 39 *OHRR Elana E709 121A 96H*

96H OHRR      3/20/20      100% 1A      4369891

<b>RREds Seneca E709</b>	RREds Seneca 731C
Sire	Bieber Tilly 139S
<b>OHRR 85Y-Hobo Elana 121A</b>	L83 Hobo 106
Dam	OHRR 9010 Elle Lana 85Y

*Angular, attractive March heifer sired by our Seneca son from Rhodes in SD. Dam is a high volume cow with extra milk and quality udder. Granddam's and great grandmother's are 102 and 105 for MPPA!*

<u>EPDs:</u>	
BW	1.7
WW	63
YW	106
Milk	21
Stay	17
Fat	.02
REA	.06
Marb	.32
<u>Wts:</u>	
BW	89
WW	537
YW	886



Great granddam to lot 39 ->



9010

### 40 *OHRR Lady 123D 98H*

98H OHRR      3/21/20      100% 1A      4373215

<b>OHRR 23Y Hobo Lad 134E</b>	L83 Hobo 106
Sire	OHRR 32T-113 Annabelle 23Y
<b>OHRR 131Y-95R Trista 123D</b>	Six Mile Spencer 111B
Dam	OHRR 95R Skrlt Trista 131Y

*Dark colored, fancy heifer much like the one above. Everything in this pedigree points to this heifer making an attractive, good sized female with a nice udder and good milk flow!*

<u>EPDs:</u>	
BW	-2.0
WW	49
YW	75
Milk	25
Stay	21
Fat	.01
REA	-.22
Marb	.25
<u>Wts:</u>	
BW	76
WW	570
YW	943

## ~ Red Angus Yearling Heifer ~

### 41 *OHRR Sweetie 866E 50F 139H*

139H OHRR      4/06/20      100% 1A      4373231

**Six Mile Encarnacion 866E**      Red U-2 Reckoning 149A  
 Sire      Red Six Mile Sexy Syringa 60

**OHRR 81D-3Y Copper Saga 50F**      OHRR 6W Copper Saga 149C  
 Dam      OHRR 3Y-53W Sweet Becka 81D

*Darn good April heifer the is made really good and should have a bright Future. Grand mother 81D has a 107 MPPA and her mother has a 109! No wonder this heifer is 34 on Milk putting her in top 1% of the breed.*

<u>EPDs:</u>	
BW	-1.8
WW	61
YW	95
Milk	34
Stay	15
Fat	.02
REA	-.01
Marb	.30
<u>Wts:</u>	
BW	70
WW	461
YW	778

## ~ Red Angus Commercial Heifers ~

*All are sire by Red Angus bulls, raised at OHR and handled like our replacements.*

### 42 *Commercial Heifer - 5H*

5H OHRR      2/03/20      100%Purebred      Solid Red

**DCND Oh Boy 1810**      Red NL GAF Crush 16B  
 Sire      Damar Oh Baby W168

**OHRR 57D Ms Mahgny GP 11F**      OHRR 114X Game Plan 154C  
 Dam      OHRR 213T Bucks Lady 57D

<u>Wts:</u>	
BW	64
8-20	536
1-14	800

### 43 *Commercial Heifer - 71H*

71H OHRR      3/06/20      100%Purebred      Solid Red

**DCND Oh Boy 1810**      Red NL GAF Crush 16B  
 Sire      Damar Oh Baby W168

**OHRR 44Z Tana Sharee 42F**      OHRR 80A Game Day 16D  
 Dam      OHRR 28R-29K Copr Tana 44Z

<u>Wts:</u>	
BW	77
8-20	447
1-14	722

### 44 *Commercial Heifer - 107H*

107H OHRR      3/23/20      50%Purebred      Solid Red

**DCND Oh Boy 1810**      Red NL GAF Crush 16B  
 Sire      Damar Oh Baby W168

**Commercial**      Commercial  
 Dam      Commercial

<u>Wts:</u>	
BW	66
8-20	381
1-14	680

### 45 *Commercial Heifer - 147H*

147H OHRR      4/13/20      75%Purebred      Solid Red

**Six Mile Spencer 111B**      MRLA New Era 87Y  
 Sire      Red Six Mile Shawnee 116T

**OHRR RWF 2C**      Hereford  
 Dam      OHRR 96N Copper Casey 150T

<u>Wts:</u>	
BW	84
8-20	413
1-14	670

### 46 *Commercial Heifer - 108H*

108H OHRR      3/24/20      75%Purebred      Solid Black

**Six Mile Spencer 111B**      MRLA New Era 87Y  
 Sire      Red Six Mile Shawnee 116T

**OHRR 117E solid black**      L83 Hobo 106  
 Dam      Commercial Black

<u>Wts:</u>	
BW	89
8-20	454
1-14	680

~ Polled Hereford Reference Sires ~

*Semen \$25*



*Homo Polled!*

**Dakitch MDK Caretaker 51B - 4 yrs**

EPDs:	
BW	2.6
WW	56
YW	98
Milk	25
M&G	53
Ser	1.3
REA	.25
Marb	.10
Wts:	
BW	87
WW	875
YW	1495

*KJ 471T Border 679Z ET \* Ms Makitch Mack Liz 28W*



*Homo Polled!*

**OHR Mr Cooper 46C 28E - 2 yrs**

AHA Ranking ↓

EPI <sup>Dist.</sup>	
BW	3.6
WW	72 2%
YW	117 2%
Milk	34 6%
M&G	70 2%
Ser	1.2
REA	.95 1%
Marb	.04
Wts:	
BW	71
WW	767
YW	1278

*OHR Cooperstown 47R 37C \* OHR Cheyenne 202Z 46C*



*Homo Polled!*

**OHR MDK Dakitch Deluxe Z14 80E**

- 3 yrs

AHA Ranking ↓

EPI <sup>Dist.</sup>	
BW	5.0
WW	65 8%
YW	106 6%
Milk	44 1%
M&G	76 1%
Ser	1.4
REA	.50
Marb	-.04
Wts:	
BW	71
WW	767
YW	1278

*NJW PMH 66X 156T Lux 206A ET \* Mohican Karen Z14*



*Dru, Lindsay, Casey, Carl & Stetson Olson*

Contact

**OLSON**

**Hereford Ranch**

16068 24th St SE - Argusville, ND 58005

Carl 701-361-0684 ~ Ed 701-238-3601 ~ olsoncandc@aol.com

[www.olsonredpower.com](http://www.olsonredpower.com)

*Breeding High Quality Registered Herefords Since 1936!*





~ Hereford 2 Year Old Bulls ~

**47**      *OHR Validation 14Z 37G*

37G OHRR      2/21/19      Polled      44105308

**EFBeef BR Validation B413**      EFBeef TFL U208 Tested X651 ET  
Sire

EFBeef 4R Thyra Y865

**OHR Vera 41R 14Z**      SHF Vision R117 U38

Dam      OHR Nikita 88G 41R

*Great bull for heifers! Dam has 7 birth at 97% & 6 weaned at 107.5%. Granddam has 10 calves at birth at 98% and 102% at weaning. He is a breed improver for 17/20 categories - Top 1% for Marb & CHB, Top 3% for REA. Lots of great udders on dam side. He ratioed 147 for IMF, 105 for REA and 88 for Fat Depth.*

<u>EPDs:</u>	
BW	1.2
WW	58
YW	90
Milk	27
M&G	55
Scr	1.1
Fat	.054
REA	.73
Marb	.72
<u>Wts:</u>	
BW	76
WW	586
YW	1012



**Lot 47**

Grandmother of lot 47 >



**41R**

**48**      *OHR Caretaker 16T 77G*

77G OHRR      3/10/19      Polled      44104229

**Dakitch MDK Caretaker 51B**      KJ 471T Border 679Z ET

Sire      Ms Makitch Mack Liz 28W

**C&L DCC Catalina 71I 16T**      DRF JWR Prince Victor 71I

Dam      Remitall Catalina ET 150L

*Correct, dark colored coming 2 year old from Caretaker who's daughters have a nursing ratio of 107.4%. Dam has a 105.4% WWR on 9 calves and is a DOD! Her grandmother is the famous Catalina 24H dam of Online. Caretakers mother raised 9 at 106%. Great maternal!*

<u>EPDs:</u>	
BW	4.1
WW	59
YW	91
Milk	27
M&G	56
Scr	1.2
Fat	.014
REA	.27
Marb	.01
<u>Wts:</u>	
BW	85
WW	664
YW	1031



**Lot 48**

Dam of lot 48 >



**16T**

~ Hereford 2 Year Old Bull ~

**49**

**OHR Homer 91E 3G**

**3G OHRR      2/04/19      Polled      Not registered**

**NJW 135U 10Y Hometown 27A      NJW 73S W18 Hometown 10Y ET**

Sire      NJW 4037 34S Durango Vaca 135U

**OHR Sunny 87T 91E      Dakitch MDK Caretaker 51B**

Dam      OHR Sunny 415E 87T ET

*Great bull for heifers! Dam is a moderate sized you cow with calves rationing 88% at birth and 106% at weaning. Grandmother 87T has 12 at birth at 90.7% and 11 at weaning for 104.2%. This bull is not registered but could be. His EPDs are pedigree estimates only.*

<u>EPDs:</u>	
BW	1.5
WW	59
YW	88
Milk	27
M&G	57
Scr	1.0
Fat	.059
REA	.48
Marb	.02
<u>Wts:</u>	
BW	64
WW	619
YW	996

~ Hereford Fall Born Bull ~

**50**

**OHR Cooper 116C 149G**

**149G OHRR      12/08/19      Polled      44199749**

**OHR Mr Cooper 46C 28E      OHR Cooperstown 47R 37C**

Sire      OHR Cheyenne 202Z 46C

**OHR Catalina 30S 116C      HVH Progress 4L 30S**

Dam      C&L DCC Catalina 71I 16T

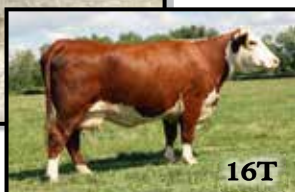
*High volume, stout made, easy doing December born son of our great Mr Cooper! Homozygous polled and free of all defects with GE-EPD's placing him in the top 6% for REA, CHB and Carcass Wt. Also top 15% for BW. Same great cowfamily as lot 45. 16T pictured is a DOD.*

<b>AHA GE-EPD</b>	
BW	1.0
WW	54
YW	91
Milk	19
M&G	46
Scr	0.3
Fat	.024
REA	.63
Marb	.15
<u>Wts:</u>	
BW	78
WW	686
YW	1044



**Lot 50**

Granddam of lot 50 >



**16T**

*We have been using VitaFerm products in our herd for many years. It helps with the fertility and efficiency of our herd.*



*To order call Matt Kitchell - 701-799-7690*

**Hereford EPD Averages for 2019 & 2020 Calves - (Non Parent)**

<u>BW</u>	<u>WW</u>	<u>YW</u>	<u>Milk</u>	<u>M&amp;G</u>	<u>Scr</u>	<u>Fat</u>	<u>REA</u>	<u>Marb.</u>
2.9	54	86	25	52	.9	.014	.38	.08

~ Hereford Yearling Bulls ~

**51**      *OHR Trustfund 24B 3H*

3H OHRR      1/10/20      Polled      44199766

**NJW 73S M326 Trust 100W ET**      KCF Bennett 3008 M326  
 Sire      NJW P606 72N Daydream 73S

---

**Glenlees DBK 9W Wilda 24B**      ANL MNPH PBG 45P Tank 9W  
 Dam      Glenlees 129T Wilda 58Y

*Well muscled, excellent structure, great pedigree and a good uddered, productive mother with a 110 WWR! Dam is sire by \$10,000 Tank son out of the great 1K cow. Dam traces to Patriot on very bottom. We have his GE-EPDs but waiting on homo polled & genetic results. Trust is one of breeds most popular sires and 1160 daughter ratio 102!*  
*Selling ½ interest and full possession.*

<b>GE-EPD</b>
BW 3.9
WW 60
YW 99
Milk 23
M&G 54
Scr 1.1
Fat .004
REA .71
Marb .23
<u>Wts:</u>
BW 81
WW 679
YW 1092



Great Granddam of lot 51 >



**52**      *OHR Cooper's Vision 56Z 23H*

23H OHRR      2/16/20      Polled      44199767

**OHR Mr Cooper 46C 28E**      OHR Cooperstown 47R 37C  
 Sire      OHR Cheyenne 202Z 46C

---

**OHR Vera 38P 56Z**      SHF Vision R117 U38  
 Dam      Remittal Effie 38P

*Excellent heifer bull! A moderate sized, long bodied, well muscled bull with good pigmentation. Sire is in top couple percent of breed for REA, Carcass Wt and CHB. Dam is good cow that milks well and 38P is one of our favorites! He's in top 5% for REA.*

<u>EPDs:</u>
BW 2.1
WW 54
YW 84
Milk 28
M&G 55
Scr 1.2
Fat -.006
REA .66
Marb .11
<u>Wts:</u>
BW 66
WW 568
YW 988



## ~ Hereford Yearling Bulls ~

### 53 *OHR Heppner's Boss 2.0 H8*

H8 OHRR      3/09/20      Polled      44215081

<b>TH Frontier 174E</b>	TH 403A 475Z Pioneer 358C ET
Sire	FTF Trusting Lady 312A
<b>OHR Sunny Delight 87T 77A</b>	OHR Redeye 51R 24X
Dam	OHR Sunny 415E 87T ET

<u>EPDs:</u>	
BW	1.7
WW	67
YW	112
Milk	29
M&G	63
Scr	1.4
Fat	.034
REA	.60
Marb	.04
<u>Wts:</u>	
BW	92
WW	776
YW	1115

*Heavy muscled, high performance, correct made Frontier son! Dam has a great track record with 6 weaned at 107.3%. Grandmother has 11 weaned at 104.2%. 415E is a DOD! Top 5% for WW and YW. Top 10% for REA, Sc and CHB. Full Brother is pictured below at 20 months. We used him last year and sold to Prause Polled Herefords in Texas. Owned with Heppner Farms - Isanti, MN.*



**Lot 53**

Full brother to lot 53 >



**G6**

### 54 *OHR Carefree 14Z 125H*

125H OHRR      3/30/20      Polled      44199773

<b>Dakitch MDK Caretaker 51B</b>	KJ 471Tborder 679Z ET
Sire	KJ HVH 33N Radison 471T ET
<b>OHR Vera 41R 14Z</b>	SHF Vision R117 U38
Dam	OHR Nikita 88G 41R

<u>EPDs:</u>	
BW	2.4
WW	55
YW	94
Milk	24
M&G	51
Scr	1.1
Fat	.054
REA	.36
Marb	.11
<u>Wts:</u>	
BW	82
WW	691
YW	1101

*Here is a younger bull that weighed in pretty good and is made right. Dam has 7 at birth for 96.9% and 6 weaned at 107.5% - she is a high volume, good uddered attractive cow. Maternal brother pictured below sold to Roger Gibson in last years sale. Could work for heifers too.*



**41R**

**Grandmother of lot 54, above  
Maternal brother to lot 54 ->**



**58F**

~ Hereford Yearling Bull ~

**55**

**Red Baldy Bull**

54H OHR 2/26/20 Polled 50% Not Registered

**OHR Mr Cooper 46C 28E**

OHR Cooperstown 47R 37C

Sire

OHR Cheyenne 202Z 46C

**OHR 34W-GP Annabelle 18B**

Pie Game Plan 0618

Dam

OHR Diva Anabelle 9S-34W

*Correct, well muscled red baldy bull from a great Red Angus daughter of our performance and maternal giant Game Plan. Mr Cooper gave us a lot of good calves and is a leader for CHB, Carcass Wt and REA. As good as his parents are we are confident he will breed really well.*

<u>EPDs:</u>	
BW	Na
WW	Na
YW	Na
Milk	Na
M&G	Na
Scr	Na
Fat	Na
REA	Na
Marb	Na
<u>Wts:</u>	
BW	90
WW	661
YW	1042

~ Hereford Yearling Heifers ~

**56**

**OHR Frontier's Lady 417B 34H**

34H OHR 2/20/20 Polled 44200646

**TH Frontier 174E**

TH 403A 475Z Pioneer 358C ET

Sire

FTF Trusting Lady 312A

**TDP Peanut 417B**

TH 133U 719T Upgrade 69X

Dam

Ash Lil Peanut 203P

*Good Frontier heifer with nice volume and a correct structure. Dam is a very nice Upgrade daughter that traces to the Melody cow at Mohican West. Top 10% for BW, WW and Scrotal.*

<u>EPDs:</u>	
BW	0.6
WW	59
YW	105
Milk	27
M&G	57
Scr	1.4
Fat	.074
REA	.41
Marb	.02
<u>Wts:</u>	
BW	70
WW	496
YW	759



**Lot 56**



**Lot 57**

**57**

**OHR Banner Girl CT 6E 127H**

127H OHR 3/30/20 Polled 44199764

**Dakitch MDK Caretaker 51B**

KJ 471Tborder 679Z ET

Sire

KJ HVH 33N Radison 471T ET

**OHR Banner Girl CT 6E 127H**

NJW 73S W18 Hometown 10Y

Dam

ANL 60D Banner Girl 1K

*Fancy end of March heifer by Caretaker whos daughters are 107.4% in production. Dam's first calf sold as a bull to Rockeman Herefords last year. She has earned at 110.5 WRR. Same great cow family and grandmother as next heifer in the book.*

<u>EPDs:</u>	
BW	3.6
WW	60
YW	101
Milk	28
M&G	58
Scr	1.2
Fat	.044
REA	.40
Marb	.06
<u>Wts:</u>	
BW	79
WW	598
YW	na

## ~ Hereford Yearling Heifers ~

### 58 *OHR Val's Banner Girl 37H*

37H OHRR      2/20/20      Polled      44200647

<b>EFBeef BR Validated B413</b>	EFBEEF TFL U208 Tested X651
Sire	EFBEEF 4R Thyra Y865
<b>OHR Banner Girl 100W 37B ET</b>	NJW 73S M326 Trust 100W
Dam	ANL 60D Banner Girl 1K

EPDs:	
BW	2.3
WW	63
YW	97
Milk	29
M&G	61
Scr	1.2
Fat	.014
REA	.78
Marb	.63
Wts:	
BW	72
WW	575
YW	931

*A really good heifer by the number one Marbling and REA bull in the breed! Dam is a powerful daughter of breed legend Trust and from our great Banner Girl that has produced many high sellers! To top it off she is a breed improver for 18 of 20 categories and in top 1% for Marb and CHB, top 2% for REA. Retaining 1 flush on this unique breeding tool.*



Grandmother of lot 58 >



### 59 *OHR Luxi 143Z 92H*

92H OHRR      3/17/20      Polled      44199760

<b>OHR MDK Dakitch Deluxe Z14 80E</b>	NJW PMH 66X 156T Lux 206A
Sire	Mohican Karen Z14
<b>OHR Queen Thea 215P 143Z</b>	HVH Progress 4L 30S
Dam	LCG Dorothea Redwood 215P

EPDs:	
BW	4.3
WW	63
YW	101
Milk	34
M&G	66
Scr	1.1
Fat	.004
REA	.34
Marb	.04
Wts:	
BW	86
WW	549
YW	908

*Another top end heifer that should make a super cow. Dam is high volume and a good milker. 215P raised 8 at 105% and her mother did 9 at 107%. Lots of power and maternal on the top also - both Z14 and Deluxe are in top 1% for Milk and M&G. This heifer is top 15% for WW and YW, 4% for M&G and 6% for Milk.*



Grandmother of lot 59 >



## ~ Hereford Yearling Heifers ~

### 60 *OHR Dyna's Hawk 92D 102H*

102H   OHRR   3/17/20   Polled   44199949

<b>Haroldson's SCC Hawk ET 208E</b>	R Leader 6964
Sire	Haroldson's HLV Marvel 48Y 12B
<b>RVP W18 Dynamic ET 92D</b>	SHF Wonder M326 W18 ET
Dam	Star Rose Garden 13X ET

*Stout made, long bodied, deep ribbed and short marked Leader grand-daughter. Dam is a great uddered, attractive Wonder with a 110 ratio in production. Shoulda had a photo of this one!*

EPDs:	
BW	3.5
WW	61
YW	94
Milk	23
M&G	53
Scr	1.3
Fat	.014
REA	.39
Marb	.15
Wts:	
BW	86
WW	598
YW	925

### 61 *OHR Sunny CT 87T 120H*

120H   OHRR   3/27/20   Polled   44199761

<b>Dakitch MDK Caretaker 51B</b>	KJ 471Tborder 679Z ET
Sire	KJ HVH 33N Radison 471T ET
<b>OHR Sunny 415E 87T ET</b>	RJH Momentum H45
Dam	MW Sunny 415E 1ET

*Fancy end of March heifer by Caretaker whos daughters are 107.4% in production. Dam has raised 11 with 104.2% at weaning and 90,7 at birth. Grandmother is a DOD with 105.8 WWR.*

EPDs:	
BW	0
WW	49
YW	77
Milk	25
M&G	49
Scr	1.1
Fat	.034
REA	.40
Marb	.10
Wts:	
BW	61
WW	508
YW	na

### 62 *OHR CT's Queen 58C 121H*

121H   OHRR   3/27/20   Polled   44199762

<b>Dakitch MDK Caretaker 51B</b>	KJ 471Tborder 679Z ET
Sire	KJ HVH 33N Radison 471T ET
<b>OHR Queen Xylia 10Y 58C ET</b>	NJW 73S W18 Hometown 10Y
Dam	HA Queen Xylia M278

*Nice younger heifer by Caretaker who has been producing good bulls and leaving really good daughters. Grandmother on bottom side is a Dam of Distinction. 10Y daughters have been real good too!*

EPDs:	
BW	2.2
WW	46
YW	82
Milk	20
M&G	44
Scr	1.2
Fat	.064
REA	.35
Marb	.11
Wts:	
BW	76
WW	566
YW	na

## Dakitch / OHR

~~~~~ Frozen Genetics Sale ~~~~~  
**March 26-27**

Hosted online by:



*Red Power Bull Sale*

16068 24th St SE  
Argusville, ND 58005

Return Service Requested



35

*The Girls!*



58



39

