

# Olson's *Red Power*

## Performance Bull & Female Sale

At the ranch ~ Argusville, ND ~ Noon meal ~ 1:00 Sale

Thursday **Feb. 21, 2019** Thursday

### *Powerful Red Angus!*



### *Excellent Herefords!*



### 80 Lots Selling!

- 33 - Red Angus Bulls*
- 15 - Red Angus Heifers*
- 21 - Polled Hereford Bulls*
- 10 - Polled Hereford Heifers*

*Celebrating*  
**83 Years**  
*of excellence in  
registered cattle!*

## ~ General Sale Information ~

**Sale Time:** 1:00 CST, Thursday, February 21, 2019. Complimentary noon lunch.  
**Location:** At the ranch. From Argusville on I-29: 7 West on Cass Co. #4, 1 North & ½ West. From Casselton on I-94: 10 North on ND #18, 5 West, 1 North & ½ East. 20 miles NW of Fargo.  
**Motels:** Holiday Inn, Fargo 701-282-7200. Governors Inn, Casselton 888-847-4524.  
**Airline Service:** Fargo Hector International Airport is served by United, American & Allegiant.  
**Delivery:** Free delivery to central points up to 300 miles. We will work to facilitate further distances at cost. Take your bull home sale day and get \$50 off.  
**Wintering:** We can keep your bull free of charge until April 1st, then we deliver.  
**Guarantee:** All Cattle are fully guaranteed by the standards set by the American Red Angus and American Hereford Associations. Coming two-year-old and fall born bulls will be fertility checked prior to the sale. We will test yearlings before delivery of April 1st.  
**Terms:** Terms of the sale are cash or check. Settlement must be made immediately following the sale before animals can be loaded out or delivered. Any corrections from the auction block or sale supplement sheet take priority over printed material in this sale catalog.  
**Liability:** All attending the sale do so at their own risk. OHR assumes no responsibility for accident or injury.  
**EPD's:** All EPDs are current as of Jan. 29, 2019. As yearling weights, carcass ultrasound data and scrotal measurements are recorded the EPDs may change by sale day. Registration numbers are provided so you can research animals further with the breed associations.  
**Cattle on Display:** All sale cattle are at the ranch. We invite you to stop prior to the sale and look them over and visit with us. Many of the mothers and sires are also here. Videos of the sale offering will also be available at our website ahead of the sale. Cattle will be displayed in pens next to our heated sale facility. This is a video sale - cattle will not enter a sale ring.  
**Herd Health:** Our herd is Johnes Free. All bulls will be tested for BVD. All cattle were Vaccinated and boosted with Bovi Shield Gold 5 and Ultra One Shot 7 at weaning. They were poured with Ivomec at weaning and again in December. Vet work supervised by Dr Darin Peterson, Casselton Vet Service - 800-216-9985.  
**Supplement Sheet:** More info will be available prior to the sale including: Ribeye, Marbling, Back Fat, Scrotal cm and Pelvic Areas. Also at our website; [www.olsonredpower.com](http://www.olsonredpower.com).  
**Mail or Phone Bids:** Bidders unable to make the sale may contact the Olsons or a sale staff member to assist in the bidding process. DVAuction will broadcast the sale live on the internet where you can watch and bid. Further info on that listed below.

### Sale Staff:

Kyle Gilchrist, Auctioneer.....641-919-1077  
 John Meents, AHA.....419-306-7480  
 Kelly Klein, Central Livestock WF.....701-320-5817  
 Kirby Goettsch, Farm & Ranch Guide.....605-380-3939  
 Steve Wolff, Wolff Cattle Services.....701-710-1574  
 Logan Hoffmann, DVAuction.....701-388-2618  
 Nolan Woodruff, ARA-Commercial Marketing.....940-477-4594

<u>Page</u>	<u>Catalog Index</u>
2-14.....	Red Angus Bulls
15-16.....	Red Angus Reference Sires
17-22.....	Red Angus Heifers
23.....	Polled Hereford Reference Sires
24-32.....	Polled Hereford Bulls
33-36.....	Polled Hereford Heifers

**This sale will be broadcast live on the internet.**



1. Create an account at [www.dvauction.com](http://www.dvauction.com) under the register tab.
2. Apply for bidding approval by clicking on the ""details"" tab at least 24 hours prior to the auction. A DV representative will notify you once you have been approved.
3. Tune in for the sale and make your purchases.
  - ~ High speed internet is required for successful bidding.
  - ~ Our full-time support team can be reached at 402-316-5460
  - ~ Or type a message to the operator during the sale.



Cattlemen,

Welcome to our Red Power Performance Bull & Female Sale!  
We work hard to provide really good bulls that will work for you!  
Every good bull starts with a really good mother - the more great cows you can stack in a pedigree the better and more predictable the bull will be. Genetic selection is made on a balance of multiple traits with performance as a priority. We take pride in developing the bulls on a roughage based ration to ensure they will be sound, problem free and have longevity. Finally we stand behind our cattle 100%.

This year we have a great group of powerful yearling bulls! There are 8 two year old Red Angus bulls and 7 two year old Herefords. And There are a handful of fall bulls also. Many of the bulls are well suited for use on heifers! The sale heifer pen is loaded with good ones! We did not catalog any bred females this year but plan to have some Red Angus bred females for sale privately.

Our family has been in the registered cattle business since 1936 and we are committed to providing you great Red Angus & Herefords that are productive, problem free and developed to last. Contact us if you have any questions.

Sincerely,  
The Olsons



The *Olsons*

Back: Laura, Craig, Caryn, Carl, Lindsay, Dru.  
Middle: Jeanne and Edward Front: Evie, Maxwell, Stetson and Casey

Sale Facility ~ 701-484-5779

The Olson Family Cell Phones

- Edward.....701-238-3601
- Carl.....701-361-0684
- Jeanne.....701-866-5779
- Lindsay.....701-388-5801
- Craig.....701-367-6704
- Caryn.....701-367-4434

**RED OHR ANGUS** *Polled Herefords*

Ed & Jeanne Olson - Carl & Lindsay Olson  
 16068 24th St SE - Argusville, ND 58005  
 Email: olsoncandc@aol.com

Phone/fax 701-484-5779  
 Ed's cell 701-238-3601  
 Carl's cell 701-361-0684

[www.olsonredpower.com](http://www.olsonredpower.com)  
*Breeding High Quality Registered Cattle Since 1936!*

## ~ Red Angus Yearling Bulls ~

<b>1</b>	<b><i>OHRR 17B ND Buckshot 5F</i></b>			
	5F OHRR	1/26/18	100% 1A	4036516
<b>OHRR 17W Dak Buckshot 54D</b>		<b>Six Mile Buckshot 297B</b>		
Sire		OHRR 213T Dakota Dancer 17W		
<b>OHRR 34W GP Annabelle 17B</b>		<b>Pie Game Plan 0618</b>		
Dam		OHRR Diva Annabelle 9S-34W		

<u>EPDs:</u>	
BW	1.9
WW	71
YW	111
Milk	26
Stay	17
Fat	.02
REA	.10
Marb	.24
<u>Wts:</u>	
BW	78
WW	650
YW	1155

*Powerful Buckshot son with extra muscle, depth, length of body and performance! Dam is from great Annabelle cowfamily and sired by our performance and maternal expert - Game Plan! Top 5% of breed for WW and Top 8% YW. Big time herdbull prospect here!*



**18B, full sister to dam of lot 1 >**



<b>2</b>	<b><i>OHRR 17D-66B Buckshot 9F</i></b>			
	9F OHRR	2/1/18	100% 1A	4036566
<b>TWG Vessel U63D</b>		<b>Red Ringstad Kargo 215U</b>		
Sire		TWG 4L Ms Nora 263U		
<b>OHRR 66B Bucks Syrie 17D</b>		<b>Six Mile Buckshot 297B</b>		
Dam		OHRR 43X Kr Ms Syringa 66B		

<u>EPDs:</u>	
BW	1.4
WW	64
YW	98
Milk	22
Stay	16
Fat	.02
REA	.03
Marb	.16
<u>Wts:</u>	
BW	77
WW	689
YW	1120

*Our first calf by Vessel - who we brought in to use on heifers with his outcross pedigree, 61# BW and 205 wt of 825. Hats off to one of our first Buckshot daughters on a job well done! He's got extra depth of body, length and performance with good muscle and a nice look!*



2018 Fall Red Angus Breed EPD averages -(Non Parent)							
BW	WW	YW	Milk	Stay	Marb	REA	Fat
-1.4	58	91	24	17	.40	0	.02

### 3 *OHRR 141C Buckshot 13F*

13F OHRR      2/2/18      100% 1A      Pending DNA

<b>OHRR 17W Dak Buckshot 54D</b>	Six Mile Buckshot 297B
Sire	OHRR 213T Dakota Dancer 17W
<b>OHRR 113A Victoria 141C</b>	OHRR 28R Macs Vic 67A
Dam	OHRR 14M Mohagany 113A

*High performance Buckshot son with extra muscle and lots of punch!  
We are waiting on DNA to confirm granddam's parentage so his EPD's  
are pedigree estimates and his registration is on hold.*

<u>EPDs:</u>
BW 1.4
WW 67
YW 107
Milk 22
Stay 17
Fat .02
REA .01
Marb .27
<u>Wts:</u>
BW 95
WW 658
YW 1350



### 4 *OHRR 46Y DK Hi Tide 16F*

16F OHRR      2/8/18      100% 1A      4036466

<b>Bar-E-L High Tide 63C</b>	Red U-2 Justified 235Z
Sire	Red Bar-E-L Bessie 91W
<b>OHRR 99W-22B Foxy Anna 46Y</b>	JECA U228
Dam	OHRR Foxy Anna 22L-99W

*Heifer bull! Extra shape and body with a very correct structure and  
good performance also! Loaded with good uddered, high maternal, big  
volume females throughout this pedigree.*

<u>EPDs:</u>
BW 0.3
WW 54
YW 89
Milk 27
Stay 20
Fat .02
REA .02
Marb .16
<u>Wts:</u>
BW 71
WW 647
YW 1157



**5*****OHRR 82A Krugerand 20F***

20F OHRR      2/10/18      100% 1A      4036500

**OHRR 6W Krugerand 149B**

Six Mile Kruger 11Z

Sire

OHRR Sakic Lass 54P-6W

**OHRR 53W-39X Trista Ana 6Z**

OHRR 58R Gold Trust 39X

Dam

OHRR 107J Grand Annabelle 53W

*Krugerand calves are built right with good volume and nice muscling. Dam has 102.7 MPPA, grandmother has 106.6 and great granddam is the great Annabelle cow that started it all for us with a 109.2 MPPA!*

EPDs:

BW	0.6
WW	58
YW	91
Milk	28
Stay	20
Fat	.02
REA	-.21
Marb	.19
<u>Wts:</u>	
BW	89
WW	632
YW	1170

**6*****OHRR 99W DK Spencer 27F***

27F OHRR      2/14/18      100% 1A      4036440

**Six Mile Spencer 111B**

MRLA New Era 87Y

Sire

Red Six Mile Shawnee 116T

**OHRR Foxy Anna 22L-99W**

OHRR 107J Landslide 113R

Dam

OHRR Foxy Roxy 22L

*Another well balanced bull from a good line of high volume, heavy milking cows. Dam has a 101 MPPA and 22L grandmother has a 108! Spencer bulls are well muscled, dark colored and very balanced.*

EPDs:

BW	1.5
WW	55
YW	88
Milk	23
Stay	18
Fat	.02
REA	.14
Marb	.23
<u>Wts:</u>	
BW	84
WW	605
YW	984

**7*****OHRR 110Y-TRS Hi Tide 29F***

29F OHRR      2/14/18      100% 1A      4036478

**Bar-E-L High Tide 63C**

Red U-2 Justified 235Z

Sire

Red Bar-E-L Bessie 91W

**OHRR 49S Ruby Trista 110Y**

Red Global Trust 21T

Dam

OHRR 112H Advance Dyna 49S

*High Tide and Trust cross had worked very well for us. The mother of this bull needs to be pictured and she maintains a 104 MPPA! This bull should produce some very good females.*

EPDs:

BW	1.0
WW	59
YW	95
Milk	21
Stay	19
Fat	.02
REA	-.12
Marb	.21
<u>Wts:</u>	
BW	96
WW	592
YW	1133



**8 OHRR 29B DK Buckshot 38F**

38F OHRR 2/17/18 100% 1A 4036522

<b>OHRR 17W Dak Buckshot 54D</b>	Six Mile Buckshot 297B
Sire	OHRR 213T Dakota Dancer 17W
<b>OHRR 808 Trista Wix 29B</b>	OHRR 58R Gold Trust 39X
Dam	Lucht Miss Wix 808

*Another well made Buckshot. This one traces the the Wix cowfamily and should leave some great females. He's also in the top 10% of the breed for WW, YW and REA! Twin to lot 9 bull below. Raised as a single by his mother.*

<u>EPDs:</u>	
BW	1.6
WW	69
YW	110
Milk	24
Stay	17
Fat	.02
REA	.20
Marb	.23
<u>Wts:</u>	
BW	72
WW	646
YW	1184

**9 OHRR 29B DK Buckshot 39F**

39F OHRR 2/17/18 100% 1A 4036596

<b>OHRR 17W Dak Buckshot 54D</b>	Six Mile Buckshot 297B
Sire	OHRR 213T Dakota Dancer 17W
<b>OHRR 808 Trista Wix 29B</b>	OHRR 58R Gold Trust 39X
Dam	Lucht Miss Wix 808

*Twin to the lot 8 bull above. Raised by a foster dam. Also a well made bull like his brother but a little lighter at birth and weaning. Traces to the Wix cowfamily known for great females. In the top 10% of the breed for WW, YW and REA!*

<u>EPDs:</u>	
BW	1.6
WW	69
YW	110
Milk	24
Stay	17
Fat	.02
REA	.20
Marb	.23
<u>Wts:</u>	
BW	55
WW	603
YW	1015

**10 OHRR 91B-16D Game Day 43F**

43F OHRR 2/18/18 100% 1A 4036528

<b>OHRR 80A Game Day 16D</b>	Pie Game Plan 0618
Sire	OHRR 42T Trista Sharee 80A
<b>OHRR 215T-5T Coppr Vana 91B</b>	OHRR Dakota Landmark 5T
Dam	OHRR Cpr Ophelia 215T

*Complete bull that has all the best OHR herdsires in his background with Game Plan, Trust and Landmark! Dam has a 106.7 MPPA and grandmother has a 107.3! Sire was one of our top sellers 2 years ago. He was an embryo calf, his mother died before we could get DNA so ARA won't let us register his calves. EPD's are pedigree estimates.*

<u>EPDs:</u>	
BW	0.4
WW	65
YW	104
Milk	27
Stay	18
Fat	.02
REA	.02
Marb	.30
<u>Wts:</u>	
BW	80
WW	648
YW	1142

# 11 OHRR 0706 Dak Hi Tide 47F

47F OHRR 2/19/18 100% 1A 4036418

Bar-E-L High Tide 63C

Red U-2 Justified 235Z

Sire

Red Bar-E-L Bessie 91W

RRAS Betsy 0706

OHRR Dakota Copper 29K

Dam

Lazy S Miss 86

*Another very good High Tide from a top notch Copper daughter that always brings in a good one - 105.3 MPPA! High Tide was Reserve Champion Bull Calf in Denver 2016. Copper 29K was World Beef Expo Champion Bull and NILE Bull Calf Champion in 2000!*

## EPDs:

BW 1.1  
WW 57  
YW 86  
Milk 26  
Stay 21  
Fat .02  
REA 0  
Marb .11

## Wts:

BW 80  
WW 624  
YW 1110

# 12 OHRR 40C ND Buckshot 48F

48F OHRR 2/19/18 100% 1A 4036534

OHRR 17W Dak Buckshot 54D

Six Mile Buckshot 297B

Sire

OHRR 213T Dakota Dancer 17W

OHRR 8001 New Essence 40C

Andras New Direction R240

Dam

LMG Miss Essence 8001

*Good, well balanced Buckshot bull from a nice young 3 year old daughter of the popular New Direction sire. Dam MPPA = 102.9. Dam traces back to the widely used Mulberry bull and the powerful Essence cow from Canada.*

## EPDs:

BW 1.2  
WW 67  
YW 108  
Milk 19  
Stay 16  
Fat .03  
REA .10  
Marb .32

## Wts:

BW 78  
WW 670  
YW 1135

# 13 OHRR 75Y-16D Game Plan 49F

49F OHRR 2/20/18 100% 1A 4036456

OHRR 80A Game Day 16D

Pie Game Plan 0618

Sire

OHRR 42T Trista Sharee 80A

OHRR 25R Copper Lana 75Y

OHRR 107J Landslide 113R

Dam

OHRR 42L Copper Honey 25R

*Game Day son with extra length of body, correct structure and good Muscle shape. Dam and granddam both have 104 MPPA's. EPD's are pedigree estimates because 80A died and did not get DNA taken.*

## EPDs:

BW 0.9  
WW 63  
YW 97  
Milk 27  
Stay 20  
Fat .02  
REA .03  
Marb .24

## Wts:

BW 81  
WW 658  
YW 1215



# 14 OHRR 151T Game Day 51F

51F OHRR 2/20/18 100% 1A 4036444

OHRR 80A Game Day 16D

Pie Game Plan 0618

Sire

OHRR 42T Trista Sharee 80A

OHRR 572 Copper Tina 151T

OHRR Dakota Copper 29K

Dam

WR Miss Tommy Girl 572

*Another good Game Day son that is built right! Dam always does a good job and has a 102.6 MPPA. Good performance here also in the actual weights and in the EPDs which are parental estimates.*

## EPDs:

BW 1.4  
WW 69  
YW 109  
Milk 27  
Stay 16  
Fat .03  
REA -.07  
Marb .24

## Wts:

BW 86  
WW 701  
YW 1196



# 15 OHRR 87A DK Buckshot 59F

59F OHRR 2/25/18 100% 1A 4036498

OHRR 17W Dak Buckshot 54D

Six Mile Buckshot 297B

Sire

OHRR 213T Dakota Dancer 17W

OHRR 11Y-GP Dak Queen 87A

Pie Game Plan 0618

Dam

OHRR 211U Queen Trista 11Y

*Great muscle, superior structure and good performance from our great young Buckshot son! Dam is a very productive Game Plan daughter with a 105.8 MPPA. Trust and Copper's full sister on the dam side too - loaded with maternal strength!*

## EPDs:

BW 1.4  
WW 69  
YW 107  
Milk 25  
Stay 16  
Fat .02  
REA .07  
Marb .24

## Wts:

BW 86  
WW 694  
YW 1200

# 16 OHRR 26Z-211U Spencer 56F

56F OHRR 2/24/18 100% 1A 4036490

Six Mile Spencer 111B

MRLA New Era 87Y

Sire

Red Six Mile Shawnee 1116T

OHRR 211U-120X CQ Trista 26Z

OHRR 107J Chief Trust 120X

Dam

OHRR Dakota Copper Queen 211U

*Spencer son with good balance and a smooth structure. Dam side goes back to Annabelle, Trust and the full sister to Dakota Copper 29K - very consistent, maternal and problem free genetics here.*

## EPDs:

BW 1.1  
WW 57  
YW 83  
Milk 20  
Stay 17  
Fat .02  
REA .01  
Marb .18

## Wts:

BW 76  
WW 616  
YW 1047

# 17 *OHRR Kruger Grand 113A 65F*

65F OHRR      2/27/18      100% 1A      Pending DNA

**OHRR 6W Krugerand 149B**

Sire

Six Mile Kruger 11Z

OHRR Sakic Lass 54P-6W

**OHRR 14M High Mahogany 113A**

Dam

Ubar High Capacity 224

OHRR 65H Grand Mahogany 14M

EPDs:

BW 1.5  
WW 55  
YW 90  
Milk 26  
Stay 17  
Fat .01  
REA -.13  
Marb .13

Wts:

BW 94  
WW 670  
YW 1310

*Big hip and butt on this high performance, deep ribbed Krugerand son! We are waiting on DNA confirmation for his registration to go through so EPD's are parentage estimates. Dam is from our great Mahogany line known for great udders, high volume and eye appeal. Granddam was Supreme Champion at 2004 ND winter Show - 103.1 MPPA!*



14M, grandmother of lot 17  
Supreme Champion Female NDWS >



# 18 *OHRR 84Y Mhgy Bucks 73F*

73F OHRR      3/04/18      100% 1A      4036476

**OHRR 17W Dak Buckshot 54D**

Sire

Six Mile Buckshot 297B

OHRR 213T Dakota Dancer 17W

**OHRR MM 56N Ms Mahgny 84Y**

Dam

L83 Entourage

OHRR 63G Adv Mahogany 56N

EPDs:

BW 3.1  
WW 74  
YW 116  
Milk 19  
Stay 19  
Fat .02  
REA -.07  
Marb .22

Wts:

BW 98  
WW 699  
YW 1232

*Another well muscled, higher performance Buckshot bull! Same great cowfamily as the bull above. Entourage was Denver Bull Calf Champion for Lodoens and bred by OHR. 56N was top selling cow in Santa sale at \$14,500 to Majestic Meadows!*



84Y mother of lot 18 >





## 19 OHRR 60A ND Buckshot 70F

70F OHRR 3/02/18 100% 1A 4036506

<b>OHRR 17W Dak Buckshot 54D</b>	Six Mile Buckshot 297B
Sire	OHRR 213T Dakota Dancer 17W
<b>OHRR 146T Tristee Ana 60A</b>	OHR 58R Gold trust 39X
Dam	OHRR Copper Annabelle 146T

*Most of the Buckshot bulls made the Red Power group. They have good muscle, extra performance and have gained well on feed! This one is in the top 5% of the breed for WW, YW and Stay. Granddam is still in our herd at 12 years with a 103.4 MPPA!*

<u>EPDs:</u>
BW 1.9
WW 72
YW 113
Milk 23
Stay 21
Fat .03
REA .01
Marb .20
<u>Wts:</u>
BW 87
WW 618
YW 1080

## 20 OHRR 80A Buckshot 84F

84F OHRR 3/08/18 100% 1A Not registered

<b>Six Mile Buckshot 297B</b>	XO Crowfoot 0102X
Sire	Red Crowfoot Goldette 6314S
<b>OHRR 42T Trista Sharee 80A</b>	Red Global Trust 21T
Dam	OHRR 60P Sweet Sharee 42T

*Son of the original Buckshot and out of Game Day's mother! This bull is an embryo calf, we did not get DNA on the dam before loosing her so he will likely not be able to be registered. EPD's are pedigree estimates. There is a lot of punch in this pedigree and we would expect this bull to breed lots of performance!*

<u>EPDs:</u>
BW 2.1
WW 71
YW 112
Milk 24
Stay 17
Fat .02
REA .17
Marb .29
<u>Wts:</u>
BW 85
WW 659
YW 1077



Lot 20's dam

80A as bred heifer ^



2M - great granddam of lot 20

## 21 OHRR 142A Mhgy Bucks 87F

87F OHRR 3/09/18 100% 1A Applied For

<b>OHRR 17W Dak Buckshot 54D</b>	Six Mile Buckshot 297B
Sire	OHRR 213T Dakota Dancer 17W
<b>OHRR 95R Mahogany 142A</b>	OHRR 58X Gold Trust 39X
Dam	OHRR 15L Dak Mahogany 95R

*Should be a good bull for heifers and adding maternal strength! 142A is beautiful uddered, moderate framed and high volume. Her dam, 95R, produced until 13 years old and maintained a 102 MPPA - wonderful udder quality and longevity here!*

<u>EPDs:</u>
BW 1.2
WW 68
YW 106
Milk 24
Stay 20
Fat .02
REA -.07
Marb .22
<u>Wts:</u>
BW 76
WW 661
YW 1153

## 22 OHRR 102R-6W DK Copper 119F

119F OHRR 3/30/18 100% 1A 4036402

<b>OHRR 6W Copper Saga 149C</b>	<b>Pie Saga 380</b>
Sire	OHRR Sakic Lass 54P-6W
<b>OHRR 2M Adv. Sharee 102R</b>	<b>4L Advantage R9N</b>
Dam	OHRR 503 Copper Sharee 2M

*Almost an April born bull here. Dam raised him at 13 years old and has a 102 MPPA. Granddam is the great 2M cow pictured on the last page with an MPPA 109.8! Sire was one of our top sellers last year as a 2 year old.*

<u>EPDs:</u>
BW 0.8
WW 50
YW 80
Milk 28
Stay 20
Fat .02
REA -.15
Marb .13
<u>Wts:</u>
BW 86
WW 649
YW 1024

## 23 OHRR 108R Dak Saga 120F

120F OHRR 3/31/18 100% 1A 4036408

<b>Pie Saga 380</b>	<b>LSF Saga 1040Y</b>
Sire	Pie Poteet 1046
<b>OHRR 310 Flo Fayet 108R</b>	<b>OHRR 6H Explorer 97N</b>
Dam	SRR Flo-Marie 310-185

*This younger bull is sired by our senior herdsire Saga who keep them Dark, well muscled and very correct! Dam side goes back to the old Flo Marie cow. Dam raised this bull at 13 year old too!*

<u>EPDs:</u>
BW -1.1
WW 47
YW 77
Milk 28
Stay 16
Fat .03
REA -.29
Marb .24
<u>Wts:</u>
BW 85
WW 682
YW 1062



# THRIVE

**Red NAVIGATOR**

Contact a member of the Commercial Marketing Team or visit [redangus.org](http://redangus.org) to learn how the Red Navigator DNA profile can add value to your commercial Red Angus females.

Position your ranch to thrive with the industry's most-favored female.

An independent university study compared eight years of Superior Livestock Auction data, revealing Red Angus-sired heifers commanded up to \$11/cwt more than females of all other breed types.

Ranch Tested. Rancher Trusted.

## Red Angus

## ~ Red Angus Fall Born Bulls ~

### 24 *OHRR 107Y Dak Ruger 169E*

169E OHRR      10/08/17      100% 1A      4036606

<b>OHRR 6W Krugerand 149B</b>	Six Mile Kruger 11Z
Sire	OHRR Sakic Lass 54P-6W
<b>OHRR 55R-228 Tiffany 107Y</b>	JECA U228
Dam	OHRR LMF Rambos Tiffany 55R

*Powerful fall bull with good size, extra muscle and great structure!  
Dam is one of our favorite cows with good udder quality and plenty of milk. All the making of a great herdbull here!*

<u>EPDs:</u>	
BW	2.9
WW	56
YW	87
Milk	27
Stay	18
Fat	0
REA	-.17
Marb	.07
<u>Wts:</u>	
BW	78
WW	662
1/21	1350



**Lot 24**

107Y - dam of lot 24>



### 25 *OHRR 93C Dak Ruger 170E*

170E OHRR      10/12/17      100% 1A      4036608

<b>OHRR 6W Krugerand 149B</b>	Six Mile Kruger 11Z
Sire	OHRR Sakic Lass 54P-6W
<b>OHRR 121A Elle Saga 93C</b>	Pie Saga 380
Dam	OHRR 85Y-Hobo Elana 121A

*This fall born Krugerand bull has a nice pattern with good muscle.  
With his smooth structure and lower birth weight he could work on heifers. Lots of good uddered, productive females on the dam side!*

<u>EPDs:</u>	
BW	1.3
WW	50
YW	82
Milk	26
Stay	17
Fat	.02
REA	-.23
Marb	.21
<u>Wts:</u>	
BW	75
WW	580
1/21	1150



**Lot 25**

## ~ Red Angus 2 Year Old Bulls ~

### 26 *OHRR 116Z Hi Tide 32E*

32E OHRR      2/07/17      100%      Pending

<b>Bar-E-L High Tide 63C</b>	Red U-2 Justified 235Z
Sire	Red Bar-E-L Bessie 92W
<b>OHRR 2M Sharee 116Z</b>	Red Northline Ignition 125W
Dam	OHRR 503 Copper Sharee 2M

*Here is a powerful High Tide son with good performance and a smaller birth weight. We are trying to confirm the mother's parents using DNA and hope to have results by sale day.*

EPDs:	
BW	0.8
WW	54
YW	85
Milk	27
Stay	20
Fat	.01
REA	-.08
Marb	.17
Wts:	
BW	64
WW	612
YW	1101



**Lot 26 - 11 months**

2M - granddam of lot 26>



### 27 *OHRR 132C ND Compass 81E*

81E OHRR      2/28/17      100% 1A      3801816

<b>OHRR 85Y-ND Compass 79C</b>	Andras New Direction R240
Sire	OHRR 9010 Elle Lana 85Y
<b>OHRR 97S 15F Kr Scarlet 132C</b>	Six Mile Kruger 11Z
Dam	OHRR 15F Scarlet Diva 97S

*High performance son of Compass with good muscle and length! Dam comes from the great uddered Scarlet cowfamily and did a super job on this her first calf. Great udders, high production and dark color also from the top side! Top 2% of breed for WW and YW.*

EPDs:	
BW	3.8
WW	75
YW	121
Milk	16
Stay	16
Fat	.02
REA	.07
Marb	.37
Wts:	
BW	93
WW	727
YW	1255

### 28 *OHRR 30B Dak Kruger 114E*

114E OHRR      3/11/17      100% 1A      3801778

<b>OHRR 6W Krugerand 149B</b>	Six Mile Kruger 11Z
Sire	OHRR Sakic Lass 54P-6W
<b>OHRR 3Y-5T Annabelle 30B</b>	OHRR Dakota Landmark 5T
Dam	OHRR 53W Sweet Anabel 3Y

*Another good Krugerand son with good performance! Dam a good young cow with a 106.7 MPPA and 3Y grandmother has a 108.5! Balanced bull with balanced data.*

EPDs:	
BW	1.6
WW	58
YW	95
Milk	28
Stay	20
Fat	.03
REA	-.10
Marb	.18
Wts:	
BW	78
WW	672
YW	1173



**29 OHRR 105C Dak Kruger 102E**

102E OHRR 3/07/17 100% 1A 3801826

<b>OHRR 6W Krugerand 149B</b>	Six Mile Kruger 11Z
Sire	OHRR Sakic Lass 54P-6W
<b>OHRR 21T Thea Krissy 105C</b>	Six Mile Kruger 11Z
Dam	LMF Thea 21T

*High performance, dark colored Krugerand son from a first calf heifer. Granddam has been very good also with a 105.1 MPPA! Very balanced data on paper also! Rock solid bull with great muscle shape, extra depth and a great look. Might work on heifers too!*

<b>EPDs:</b>
BW 1.1
WW 57
YW 89
Milk 29
Stay 19
Fat .01
REA .03
Marb .14
<b>Wts:</b>
BW 77
WW 759
YW 1234

**30 OHRR 102R Dak Hobo 121E**

121E OHRR 3/14/17 100% 1A 3801638

<b>L83 Hobo 106</b>	Buf Crk Hobo 1961
Sire	L83 Miss Mulberry 913
<b>OHRR 2M Adv. Sharee 102R</b>	4L Advantage R9N
Dam	OHRR 503 Copper Sharee 2M

*This bull is well suited for use on heifers and backed by top maternal on the dam side. Dam is a big ribbed, good uddered 13 year old with a 101.8 MPPA. Grandmother was a donor for us, pictured a couple pages back and boasted a 109.8 lifetime MPPA!*

<b>EPDs:</b>
BW -0.5
WW 46
YW 70
Milk 25
Stay 21
Fat .02
REA -.29
Marb .33
<b>Wts:</b>
BW 79
WW 620
YW 1049

**31 OHRR 82A Hobo Gold 133E**

133E OHRR 3/25/17 100% 1A 3801838

<b>L83 Hobo 106</b>	Buf Crk Hobo 1961
Sire	L83 Miss Mulberry 913
<b>OHRR 53W-39X Trista Ana 6Z</b>	OHRR 58R Gold Trust 39X
Dam	OHRR 107J Grand Annabelle 53

*Powerful Hobo son with extra body and muscle shape. Dam has a 102.7 MPPA and grandmother has a 106.6 MPPA! Powerful bull with balanced numbers.*

<b>EPDs:</b>
BW 0.6
WW 59
YW 89
Milk 24
Stay 21
Fat .03
REA -.41
Marb .35
<b>Wts:</b>
BW 86
WW 718
YW 1114

**32*****OHRR 23Y Hobo Lad 134E***

134E OHRR

3/26/17

100% 1A

3801720

EPDs:

BW	-0.3
WW	55
YW	83
Milk	23
Stay	21
Fat	.02
REA	-.34
Marb	.34

Wts:

BW	79
WW	694
YW	1110

**L83 Hobo 106**

Buf Crk Hobo 1961

Sire

L83 Miss Mulberry 913

**OHRR 32T-113 Annabelle 23Y**

OHRR 107J Landslide 113R

Dam

OHRR 112H Canyon Kuruba 32T

*Another powerful Hobo son! With a negative BW EPD and 79 pound weight he would work for breeding heifers. 23Y is big volume, good Uddered and easy on the eyes. Her mother was much the same with a 102.6 MPPA.*

**Dam of Lot 32****33*****OHRR 43X Dak Hobo 160E***

160E OHRR

5/12/17

100% 1A

3801702

EPDs:

BW	2.5
WW	64
YW	96
Milk	22
Stay	21
Fat	.03
REA	-.26
Marb	.29

Wts:

BW	86
WW	793
YW	1181

**L83 Hobo 106**

Buf Crk Hobo 1961

Sire

L83 Miss Mulberry 913

**OHRR 97S Diva Anna 43X**

OHRR 107J Landslide 113R

Dam

OHRR 15F Scarlet Diva 97S

*Couple months younger here - he won't be 2 until May 12th. Dam is high volume, heavy milking and boasts a 107.4 MPPA! She traces to two of our best cow families, Scarlet and Annabelle - no wonder she's so good.*

*We have Red Angus bred females for sale. Sale day we will have a group penned up to choose from. Contact Ed for details.*

**Ranch Tested. Rancher Trusted.****Red Angus**

# ~ Red Angus Reference Sires ~



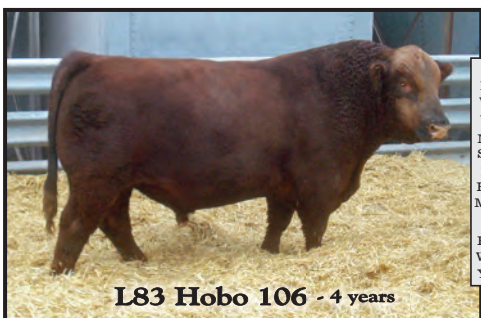
EPDs:	
BW	-0.7
WW	63
YW	103
Milk	25
Stay	19
Fat	.04
REA	-.27
Marb	.39
Wts:	
BW	84
WW	834
YW	1410

*LCC Above & Beyond 1300S \* Milk Crk Cub 722*



EPDs:	
BW	0.5
WW	70
YW	108
Milk	31
Stay	15
Fat	.02
REA	0
Marb	.39
Wts:	
BW	68
WW	727
YW	na

*VGW Game Plan 508 \* Buf Crk Chf 824-1658*



EPDs:	
BW	-1.4
WW	54
YW	82
Milk	21
Stay	20
Fat	.03
REA	-.43
Marb	.44
Wts:	
BW	84
WW	681
YW	1195

*Buf Crk Hobo 1961 \* Red Fine Line Mulberry 26P*



EPDs:	
BW	1.2
WW	53
YW	78
Milk	19
Stay	12
Fat	0
REA	.25
Marb	.27
Wts:	
BW	86
WW	826
YW	na

*MRLA New Era 87Y \* 5L Norseman King 2291*



EPDs:	
BW	1.0
WW	67
YW	102
Milk	27
Stay	14
Fat	.02
REA	.36
Marb	.22
Wts:	
BW	82
WW	849
YW	na

*XO Crowfoot 0102X \* Red SSS Ole 746P*

# ~ Red Angus Reference Sires ~



EPDs:	
BW	-0.7
WW	63
YW	103
Milk	25
Stay	19
Fat	.04
REA	-.27
Marb	.39
Wts:	
BW	75
WW	695
YW	1160

**OHRR 6W Krugerand 149B - 15 months**

*Six Mile Kruger 11Z \* Red Six Mile Sakic 832S*



EPDs:	
BW	0.3
WW	50
YW	85
Milk	29
Stay	17
Fat	.03
REA	.22
Marb	.14
Wts:	
BW	80
WW	732
YW	1017

**OHRR 6W Copper Saga 149C - 2 yrs**

*Pie Saga 380 \* Red Six Mile Sakic 832S*



EPDs:	
BW	-0.8
WW	55
YW	84
Milk	22
Stay	19
Fat	.02
REA	-.07
Marb	.17
Wts:	
BW	na
WW	818
YW	na

**Bar-E-L High Tide 63C - 1 yr**

*Red U-2 Justified 235Z \* Red SVR Jack 65S*



EPDs:	
BW	3.0
WW	82
YW	131
Milk	22
Stay	17
Fat	.02
REA	.17
Marb	.22
Wts:	
BW	84
WW	712
YW	1220

**OHRR 17W Dak Buckshot 54D - 1 yr**

*Six Mile Buckshot 297B \* OHRR Dakota Mack 203T*



EPDs:	
BW	1.9
WW	72
YW	115
Milk	26
Stay	17
Fat	.02
REA	.07
Marb	.36
Wts:	
BW	96
WW	793
YW	1363

**OHRR 80A Game Day 16D - 1 yr**

*Pie Game Plan 0618 \* Red Global Trust 21T*



## ~ Red Angus Heifers ~

### 35 OHRR 12D-7300 Ms Gemma 3F

3F OHRR      1/19/18      100% 1A      4036580

<b>TWG Vessel U63D</b>	Red Ringstad Kargo 215U
Sire	TWG 4L Ms Nora 263U
<b>OHRR 7300-9010 Ms Gemma 12D</b>	Pie Game Plan 0618
Dam	LMG Miss Welma 7300

EPDs:	
BW	1.1
WW	66
YW	102
Milk	23
Stay	14
Fat	.02
REA	0
Marb	.17
Wts:	
BW	44
WW	442
YW	770

*Nice made, moderate sized daughter of our young outcross sire Vessel. This heifer was a twin to another heifer weighing 54#. Dam is a very nice first calf heifer who's dam has a 104 MPPA and Grandam 105.2! Looks a lot like her great grandmother pictured below!!*



9010 great grandmother of lot 35 >



### 36 OHRR 8D-Copper Ana B 6F

6F OHRR      1/2718      100% 1A      4036556

<b>OHRR 6W Copper Saga 149C</b>	Pie Saga 380
Sire	OHRR Sakic Lass 54P-6W
<b>OHRR 10Y-141T Hobo Trista 8D</b>	L83 Hobo 106
Dam	OHRR 141T Copper Trista 10Y

EPDs:	
BW	0.5
WW	58
YW	93
Milk	26
Stay	19
Fat	.03
REA	-.24
Marb	.20
Wts:	
BW	80
WW	625
YW	993

*Very good heifer with nice thickness and volume. She is darker colored as the parentage would confirm. Sire was one of our high sellers last year. Dam is a first calf heifer and traces back to our great maternal giants Trust and Dakota Copper!*



# 37 OHRR 57D Ms Mahgny GP 11F

11F OHRR      2/01/18      100% 1A      4036550

**OHRR 114X Mhg Game Plan 154C**

Pie Game Plan 0618

Sire

OHRR 56N Mhgnry Trista 114X

**OHRR 312T Bucks Lady 57D**

Six Mile Buckshot 297B

Dam

OHRR T3 Lady Chief 213T

### EPDs:

BW	1.5
WW	65
YW	100
Milk	26
Stay	17
Fat	.01
REA	-.01
Marb	.25

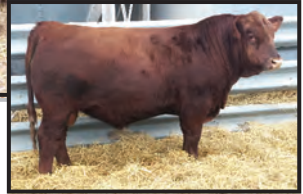
### Wts:

BW	56
WW	555
YW	923

*One of the better heifers in this sale - She has the thickness, volume and look to go to the shows. Sire is super stout, easy doing and very dark. His dam is one of our best and most powerful Trust daughters With a 102.9 MPPA. Grandmother on bottom has a 107.2 MPPA! Pedigree estimated EPDs because we are waiting on DNA from sire.*



154C - Sire of lot 37 >



# 38 OHRR 4D-Ms Essence 25F

25F OHRR      2/12/18      100% 1A      4036582

**TWG Vessel U63D**

Red Ringstad Kargo 215U

Sire

TWG 4L Ms Nora 263U

**OHRR 8001 Ms Essence 4D**

Pie Game Plan 0618

Dam

LMG Miss Essence 8001

### EPDs:

BW	1.4
WW	62
YW	94
Milk	21
Stay	16
Fat	.02
REA	-.07
Marb	.15

### Wts:

BW	74
WW	565
YW	936

*Attractive heifer with all the right parts! Dam did a great job here as a first calf heifer. Grandmother, 8001 has produced some high sellers for us - her mother has a big history in Canada! Show potential too!*



# 39 OHRR 4A-Hahogny Lass 60F

60F OHRR 2/25/18 100% 1A 4036584

TWG Vessel U63D

Red Ringstad Kargo 215U

Sire

TWG 4L Ms Nora 263U

OHRR 84Y-GP Ms Mahgny 4A

Pie Game Plan 0618

Dam

OHRR-MM 56N Ms Mahgny 84Y

### EPDs:

BW	1.5
WW	66
YW	100
Milk	21
Stay	17
Fat	.02
REA	-.11
Marb	.22

### Wts:

BW	79
WW	594
YW	1024

*Very good Vessel daughter that has the extra depth, good thickness and a very maternal look! Dam side is the great Mahogany female line of high volume, good uddered and productive cows.*



Lot 39

4A - dam of lot 39 >



# 40 OHRR 53T Foxy Vana 85F

85F OHRR 3/09/18 100% 1A 4036438

OHRR 6W Krugerand 149B

Six Mile Kruger 11Z

Sire

OHRR Sakic Lass 54P-6W

OHRR 18B Foxy Vanna 53T

4L Advantage R9N

Dam

Roberts Pr-Foxy 18B

### EPDs:

BW	1.1
WW	51
YW	82
Milk	24
Stay	19
Fat	.01
REA	-.11
Marb	.22

### Wts:

BW	85
WW	520
YW	899

*Good Krugerand heifer that traces back to 18B with a 111 MPPA! R9N was a calf along side his mother when she won Champion Cow Calf at the NILE. Many good mama cows in this pedigree.*

# 41 OHRR 66X Trista Ms 103F

103F OHRR 3/22/18 100% 1A 4036452

OHRR 6W Krugerand 149B

Six Mile Kruger 11Z

Sire

OHRR Sakic Lass 54P-6W

OHRR 62M Lady Trista 66X

Red Global Trust 21T

Dam

OHRR 9502 Rams Eve 62M

### EPDs:

BW	4.1
WW	61
YW	96
Milk	25
Stay	19
Fat	.01
REA	-.25
Marb	.14

### Wts:

BW	90
WW	521
YW	925

*Fancy Krugerand daughter from a very good cow family. Dam has a 104.2 MPPA and grandmother has a 105.1! Good performance, length and femininity in this later March heifer.*

**42 OHRR 146T CP Anna Bella 102F**

102F OHRR 3/21/18 100% 1A 4036432

<b>OHRR 6W Krugerand 149B</b>	Six Mile Kruger 11Z
Sire	OHRR Sakic Lass 54P-6W
<b>OHRR Copper Annabelle 146T</b>	OHRR Dakota Copper 29K
Dam	SHHM Annabelle 107J

<u>EPDs:</u>
BW 1.7
WW 51
YW 77
Milk 30
Stay 22
Fat .01
REA -.18
Marb .05
<u>Wts:</u>
BW 79
WW 575
YW 1025

*Complete, high quality heifer that has show potential. Dam is 12 years old and might be our best Copper daughter ever - 103.4 MPPA! The grandmother is the original Annabelle cow that started it all for us and tallied up a 109.2 MPPA! 30 on milk puts her in top 3% of the breed!*



107J - granddam of lot 42 &gt;

**43 OHRR 116A Ms Randa 110F**

110F OHRR 3/26/18 100% 1A 4036588

<b>OHRR 6W Krugerand 149B</b>	Six Mile Kruger 11Z
Sire	OHRR Sakic Lass 54P-6W
<b>OHRR 29S-Copper Trista 116A</b>	Red Global Trust 21T
Dam	OHRR 446 Copperlass 67G-29S

<u>EPDs:</u>
BW 2.8
WW 52
YW 80
Milk 26
Stay 19
Fat .01
REA -.24
Marb .16
<u>Wts:</u>
BW 95
WW 541
YW 930

*Moderate, stout made heifer with a good front end and an attractive Look. Dam is big volume, good uddered, attractive cow as you'd Expect from a trust daughter. Trust worked well with most everything!*

**44 OHRR 211T Siri Anna 121F**

121F OHRR 4/01/18 100% 1A 4036436

<b>Pie Saga 380</b>	LSF Saga 1040Y
Sire	Pie Poteet 1046
<b>OHRR 9502 Ava Lana 211T</b>	Pie Avalanche 381
Dam	Messmer Ophelia 9502

<u>EPDs:</u>
BW -1.3
WW 55
YW 88
Milk 26
Stay 17
Fat .03
REA -.14
Marb .26
<u>Wts:</u>
BW 68
WW 604
YW 1068

*An own daughter of our senior herdsire Saga that is very correct, attractive and easy to look at. Dam is a high volume, nice uddered, consistent producer that raised this good heifer at 11 years old.*



**45** ***OHRR 218S Siri Anna 122F***  
 122F OHRR 4/01/18 100% 1A 4036590

<b>Pie Saga 380</b>	LSF Saga 1040Y
Sire	Pie Poteet 1046
<b>OHRR 9502 Ava Lana 218S</b>	Pie Avalanche 381
Dam	Messmer Ophelia 9502

*Dam is a full sister to previous heifer and both are out of Saga. This heifer has a notch more femininity and a bit more depth. Granddam of both heifers is the mother of Dakota Copper 29K! Dam always brings in a good one and is easy to look at! Good old school genetics!*

<b>EPDs:</b>	
BW	0.3
WW	52
YW	87
Milk	28
Stay	17
Fat	.03
REA	-.04
Marb	.20
<b>Wts:</b>	
BW	78
WW	478
YW	923

**46** ***OHRR 0124 Judy 124F***  
 124F OHRR 4/01/18 100% 1A Applied for

<b>LRA Epic 375</b>	Beckton Epic R397 K
Sire	LRA Ms Vacation 7121
<b>LRA Ms Monu 0124</b>	LRA Monu 690
Dam	MJ Miss Judy 92P

*Very complete, well balanced, dark colored April heifer! Dam was our pick of the Leddy dispersion because of her high volume, great udder quality and 104.1 MPPA! Granddam has a 105.6 MPPA! Sire traces to the popular sires Epic and Brown Vacation.*

<b>EPDs:</b>	
BW	-1.4
WW	54
YW	89
Milk	24
Stay	20
Fat	.01
REA	-.06
Marb	.22
<b>Wts:</b>	
BW	69
WW	571
YW	963



0124 - dam of lot 45 >



**47** ***OHRR 4Z Copper Anna 141F***  
 141F OHRR 4/11/18 100% 1A 4036484

<b>OHRR 6W Copper Saga 149C</b>	Pie Saga 380
Sire	OHRR Sakic Lass 54P-6W
<b>OHRR 32T-120X Cnyn Anna 4Z</b>	OHRR 107J Chief Trust 120X
Dam	OHRR 112H Canyon Kuruba 32T

*Sharp April heifer with a pedigree loaded with maternal greats - Trust, Annabelle and the Kuruba cowfamily. Granddam 32T has a 102.6 MPPA. 6W on the sire side is also the mother of Krugerand.*

<b>EPDs:</b>	
BW	-1.9
WW	47
YW	79
Milk	28
Stay	20
Fat	.00
REA	-.20
Marb	.19
<b>Wts:</b>	
BW	68
WW	484
YW	863

**48 OHRR 8C Hi Tide Ms Wx 125F**

125F OHRR 4/01/18 100% 1A 4036540

**Bar-E-L High Tide 63C**

Red U-2 Justified 235Z

Sire

Red Bar-E-L Bessie 91W

**OHRR 43X-GP Diva Anna 8C**

Pie Game Plan 0618

Dam

OHRR 97S Diva Anna 43X

EPDs:

BW	2.6
WW	73
YW	107
Milk	22
Stay	18
Fat	.02
REA	-.04
Marb	.16

Wts:

BW	84
WW	644
YW	1044

*Another fancy April heifer from a very good maternal family. Dam is a really productive 3 year old with a 106.9 MPPA. 43X grandmother is one of our very best at 107.4 MPPA! High Tide puts out good performance and eye appeal in his calves. Top 3% of breed for WW.*

**49 OHRR 97S Copper Siri 134F**

134F OHRR 4/05/18 100% 1A 4036412

**OHRR 6W Krugerand 149B**

Six Mile Kruger 11Z

Sire

OHRR Sakic Lass 54P-6W

**OHRR 15F Scarlet Diva 97S**

LCC Divide 1435K

Dam

OHRR Ms 925 Scarlett 15F

EPDs:

BW	3.0
WW	46
YW	72
Milk	25
Stay	18
Fat	.01
REA	-.20
Marb	.20

Wts:

BW	80
WW	470
YW	814

*Fancy April heifer raised by a 13 year old cow still in our herd today! The grandmother is 15F - so in 2 generations we passed through the alfabet to get back to F again. That's longevity! And she had a 102.6 MPPA - that's productivity!*



Granddam of lot 49 ^  
Great granddam of lot 49 >



~ Polled Hereford Reference Sires ~

**Dakitch MDK Caretaker 51B - 4 yrs**

EPDs:	
BW	2.9
WW	61
YW	105
Milk	23
M&G	53
Scr	.9
REA	.38
Marb	.11
Wts:	
BW	87
WW	875
YW	1495

*KJ 471T Border 679Z ET \* Ms Makitch Mack Liz 28W*

**OHR Cooperstown 47R 37C - 2 yrs**

EPDs:	
BW	3.4
WW	64
YW	103
Milk	33
M&G	65
Scr	1.1
REA	.81
Marb	.11
Wts:	
BW	81
WW	737
YW	1244

*NJW 73S W18 Hometown 10Y ET \* FJ Mr Catalyst 11J*



*Dru, Lindsay, Casey, Carl & Stetson Olson*

Contact

# OLSON Hereford Ranch

16068 24th St SE - Argusville, ND 58005

Carl 701-361-0684 ~ Ed 701-238-3601 ~ Ranch 701-484-5779

[www.olsonredpower.com](http://www.olsonredpower.com)

*Breeding High Quality Registered Herefords Since 1936!*



Hereford EPD Averages for 2017 & 2018 Calves - (Non Parent)									
<u>BW</u>	<u>WW</u>	<u>YW</u>	<u>Milk</u>	<u>M&amp;G</u>	<u>Scr</u>	<u>Fat</u>	<u>REA</u>	<u>Marb</u>	
3.0	51	82	23	50	.9	.01	.37	.10	

## ~ Polled Hereford 2 Year Old Bulls ~

### 50 *OHR Mr Cooper 46C 28E*

28E OHRR      2/06/17      Polled      43874399

**OHR Cooperstown 47R 37C**      NJW 73S W18 Hometown 10Y ET  
 Sire      FJ Lady Valerie 47R

**OHR Cheyenne 202Z 46C**      TH 49U 719T Sheyenne 3X  
 Dam      OHR Sarahs Nikita 202Z ET

*High performance, long bodied, well muscled, dark colored son of our powerful bull Cooperstown! Dam is a first calf heifer who's full sister was our top selling heifer in 2016. Due to injury this bull was raised by a foster dam from birth. 47R and mother of Sheyenne are DODs! This bull is in the top 1% for WW, YW, REA, CW and CHB! Top 3% for M&G. Selling 1/2 interest and 1/2 possession. We'd like to use him until June 1st.*

EPDs:	
BW	4.1
WW	72
YW	119
Milk	28
M&G	64
Scr	1.1
Fat	.007
REA	.97
Marb	.13
Wts:	
BW	71
WW	767
YW	1278



**Lot 50**

### 51 *OHR Care Bear 38P 47E*

47E OHRR      2/12/17      Polled      43874398

**Dakitch MDK Caretaker 51B**      KJ 471T Border 679Z ET  
 Sire      Ms Makitch Mack Liz 28W

**Remitall Effie 38P**      Remitall Landslide 161L  
 Dam      Remitall Effie 131L

*High performance, long bodied, dark colored son of our senior herdsire Caretaker. Dam is a great uddered, productive and attractive Governor granddaughter that raised this bull at 13 years old - her production WW ratio is 103%. Caretaker's mother ratios 106.8 on production and his daughters are ratioing 107.5! He's in top 10% for CHB, 15% for CW.*

EPDs:	
BW	4.4
WW	51
YW	88
Milk	22
M&G	48
Scr	.9
Fat	.027
REA	.45
Marb	.08
Wts:	
BW	74
WW	576
YW	983



**Lot 51**

Dam of lot 51 --->



**38P**



**52****OHR Cooper 4B 63E**

63E OHRR

2/20/17

Scurred

43874401

**OHR Cooperstown 47R 37C**

NJW 73S W18 Hometown 10Y ET

Sire

FJ Lady Valerie 47R

**Ms Dakitch 37S Polly 4B**

KJ 471T Border 679Z ET

Dam

Ms Dakitch 19H Polly 37S

*Heifer bull that is moderate in size, well muscled and high volume.**Dam has a 101.5 production ratio and her first calf was our top selling heifer 2 years ago. Grandmother on bottom side is a DOD and grandmother of top is a DOD with 111 WWR and still working at 14 years!***EPDs:**

BW	2.6
WW	57
YW	85
Milk	26
M&G	55
Scr	.8
Fat	.047
REA	.45
Marb	.10

**Wts:**

BW	67
WW	627
YW	983

**53****OHR Cooper 25Z 115E**

115E OHRR

3/11/17

Polled

43874393

**OHR Cooperstown 47R 37C**

NJW 73S W18 Hometown 10Y ET

Sire

FJ Lady Valerie 47R

**OHR Vera 86U 25Z**

SHF Vision R117 U38

Dam

OHR Revlon 41R 86U

*Very good heifer bull from excellent maternal cow families! Dam is a great uddered, moderate, easy doing cow who's dam is a DOD with a 113.4 WWR on her calves! This dam side is loaded with great Maternal and performance legends - Governor, Boomer, Kodiak, Progress and Ribeye. This bull is loaded with muscle and pigment. He's a breed improver for 17 of 20 traits and in top 10% for REA, BMI, BII and Cow Fertility. He's also within the top 20% for Milk & M+G.***EPDs:**

BW	1.6
WW	54
YW	84
Milk	30
M&G	57
Scr	1.1
Fat	.007
REA	.61
Marb	.11

**Wts:**

BW	66
WW	592
YW	1013



Granddam of lot 53 ---&gt;

**54****OHR Caretaker 152Z 119E**

119E OHRR

3/13/17

Scurred

43874375

**Dakitch MDK Caretaker 51B**

KJ 471Tborder 679Z ET

Sire

KJ HVH 33N Radison 471T ET

**OHR Queen Scarlett 68N 152Z**

HVH Progress 4L 30S

Dam

OHR Scarlett 68N ET

*Complete, correct, well muscled bull with 100% pigmentation!**Dam is a very nice, good uddered, high volume daughter of Progress with a 106.8 WWR! Grandmother had 2 full brothers that were top sellers last year. This guy is in the top 20% for WW and YW.**Could work on heifers also.***EPDs:**

BW	3.7
WW	59
YW	99
Milk	22
M&G	52
Scr	.7
Fat	.097
REA	.27
Marb	.13

**Wts:**

BW	78
WW	633
YW	1083

**55****OHR Caretaker 1117 126E**

126E OHRR

3/18/17

Polled

43874363

**Dakitch MDK Caretaker 51B**

KJ 471Tborder 679Z ET

Sire

KJ HVH 33N Radison 471T ET

**Grassy Run Georgia Girl 1117**

CMF SAH 676M On Target 837S

Dam

GHF GA Girl P606 BEP96 R107

EPDs:

BW	5.7
WW	60
YW	100
Milk	24
M&G	54
Scr	.7
Fat	.047
REA	.42
Marb	-.04

Wts:

BW	90
WW	631
YW	1091

*Another good son of Caretaker, who's daughters are ratioing 107.5. Dam and granddam are both steady producers at 102 & 101.6 WWRs. Granddam pictured below is a daughter of P606 known for producing great females. He's in top 20% or better for WW, YW and CW.*

**56****OHR Care E On 76U 147E**

147E OHRR

4/03/17

Polled

43874405

**Dakitch MDK Caretaker 51B**

KJ 471T Border 679Z ET

Sire

KJ HVH 33N Radison 471T ET

**OHR Revlon 71P 76U**

HA Masterpiece M242

Dam

OHR Nikita 931H 71P

EPDs:

BW	4.6
WW	58
YW	99
Milk	22
M&G	51
Scr	.9
Fat	.017
REA	.46
Marb	.04

Wts:

BW	80
WW	574
YW	1050

*Really good, well muscled, athletic Caretaker son that won't be 2 until April. Dam always does a good job, with great udder and 102.4 WWR. Her pedigree is back by breed maternal giants - Governor, Boomer and Kodiak. Top 15% for YW and CW. Maternal brother sold for \$7000 in 2015.*

**Lot 56****Dam of lot 56 --->****76U**

## ~ Polled Hereford Fall Bulls ~

### 57 *Dakitch MDK OHR Backroad 202E*

202E MDK      10/21/17      Polled      43856042

**EXR Crossroads 466 ET**      NJW 73S M326 Trust 100W ET  
Sire      TH 90W 755T Ms Dom 28Z

**Ms Dakitch MDK Pearl 37W**      Harvie Traveler 69T  
Dam      Ms Dakitch Lady Master 95S

*High quality, long sided, deep bodied fall bull with extra pigment and from a great cow line! Dam is a DOD with production ratios of 98 for BW and 105.9 WW! Grandmother is also a DOD with 103.4 WWR. Top 10% for WW, YW, M&G, CW, REA and CHB! We purchased dam from Kitchell's when this guy was couple weeks old. Results pending for GE-EPD and polled tests. Could work on heifers too!*  
*Selling 1/2 interest and full possession.*

EPDs:	
BW	4.3
WW	67
YW	103
Milk	29
M&G	62
Scr	.7
Fat	.007
REA	.63
Marb	.12
Wts:	
BW	70
WW	613
YW	1039



**Dam of lot 57 --->**  
*Embryos for sale by Trump.*

### 58 *OHR Big Red 145C 167E*

167E OHRR      10/02/17      Polled      43985110

**Dakitch MDK Caretaker 51B**      KJ 471T Border 679Z ET  
Sire      Ms Makitch Mack Liz 28W

**OHR Banner Girl 24X 145C**      OHR Redeye 51R 24X  
Dam      ANL 60D Banner Girl 1K

*Very good, well built fall bull with extra pigment, good muscle and a very good first calve heifer for a mother. She weaned this guy at 111%. Grandmother produced a top seller in 2015 at \$9500 and 5 daughters now in our herd. Lots of great udders, beautiful females and extra pigment here. Could work on heifers too. Top 20% for WW, YW and CEM. Results coming on GE-EPDs and polled test.*

*Selling 1/2 interest and full possession.*

EPDs:	
BW	3.7
WW	59
YW	100
Milk	22
M&G	52
Scr	1.1
Fat	.057
REA	.37
Marb	.09
Wts:	
BW	74
WW	658
YW	1079



**Granddam of lot 58 ----->**  
*Embryos for sale by Hometown, Redeem,  
Vision and Progress 30S*

**59**      ***OHR Sheyenne 158C 172E***

172E OHRR      10/13/17      Polled      43985117

<b>Dakitch MDK Caretaker 51B</b>	KJ 471T Border 679Z ET
Sire	Ms Makitch Mack Liz 28W
<b>OHR Sheyenne 17W 158C</b>	TH 49U 719T Sheyenne 3X
Dam	ANL R Mindy 17W

*Definite heifer bull here! Sire never had a big calf. Dam's BW is 1.2. Grand sire 3X is a -2.7 for BW and in top 1% of breed for Calving Ease Direct and BW. Caretaker daughters are ratioing 107.5 in production. Dam is a first calf heifer. These fall calves didn't get any extra care.*

<b>EPDs:</b>	
BW	1.7
WW	56
YW	91
Milk	24
M&G	52
Scr	.8
Fat	.057
REA	.34
Marb	.13
<b>Wts:</b>	
BW	69
WW	593
YW	1049

**60**      ***OHR Freedom 154B 175E***

175E OHRR      11/02/17      Polled      43985114

<b>Dakitch MDK Caretaker 51B</b>	KJ 471T Border 679Z ET
Sire	Ms Makitch Mack Liz 28W
<b>OHR Liberty Belle 10Y 154B ET</b>	NJW 73S W18 Hometown 10Y ET
Dam	Star MKS Belle SSF 117L

*Another great bull for heifers! Grandsire Hometown is 2.3 for BW, a Calving Ease Direct trait leader and a former National Champion. Granddam is the great Belle cow that was a donor for us and Star Lake - 104.3 production ratio and great udder quality too.*

<b>EPDs:</b>	
BW	2.3
WW	54
YW	93
Milk	24
M&G	51
Scr	.9
Fat	.067
REA	.44
Marb	.19
<b>Wts:</b>	
BW	70
WW	531
YW	933



Videos of the sale offering  
will be posted on our website:  
[www.olsonredpower.com](http://www.olsonredpower.com)

*Olson's Red Power Advantage:*

- + *More performance, muscle & maternal excellence.*
- + *Carcass, performance, scrotal & pelvic data available.*
- + *Bulls tested for BVD & from Johnes Free herd.*
- + *Bulls developed on roughage ration to ensure soundness.*
- + *Free wintering on bulls over \$2500, 300 mile delivery.*
- + *\$50 discount if you take your bull home sale day.*
- + *Reputation breeder of quality registered cattle since 1936!*



**61****MF 1D Farley 6011 804F**

804F      1/02/18      Scurred      43933107

<b>BR Belle Air 6011</b>	Bar S LHF 028 240
Sire	BR Belle 4082 ET
<b>HC Daiquiri 1D ET</b>	CRR About Time 743
Dam	Harfst Gin 15U

<b>EPDs:</b>	
BW	2.1
WW	51
YW	81
Milk	27
M&G	52
Scr	1.5
Fat	.022
REA	.47
Marb	.12
<b>Wts:</b>	
BW	65
WW	814
YW	1168

*Long bodied, well muscled, high performance son of the reigning National Champion - Bell Air! Dam is a real good first calf heifer by Another National Champion - About Time. 65# BW, sire has 1.8 BW and dam has 2.3 BW therefore he could work on heifers.*

**Lot 61****62****OHR Polled Pack Leader 15F**

15F OHR      2/05/18      Polled      43986172

<b>R Leader 6964</b>	Hyalite On Target 936
Sire	R Miss Revolution 1009
<b>TH 74U 719T Dominette 58X</b>	TH 122 71I Victor 719T
Dam	TH 8090 63N Dominette 74U

<b>EPDs:</b>	
BW	1.5
WW	60
YW	93
Milk	22
M&G	52
Scr	1.2
Fat	.037
REA	.44
Marb	.09
<b>Wts:</b>	
BW	71
WW	666
YW	1192

*Lots of muscle shape, extra depth of body, good length of side and nice performance too! He's easy doing, fully pigmented and structurally right on. Dam a great uddered, moderate sized cow with production ratios of 98.7 for BW and 104.5 for WW. He's a breed improver for 18 of 20 traits and top 20% for BW, CED, WW, Sc, CW and CHB! We are awaiting results for GE-EPD and polled tests.*

*Selling 1/2 interest and 1/2 possession.*

**Lot 62**

Dam of lot 62 ----&gt;

**58X**

## 63 Perks OHR 33C Advance 8043

8043 2/14/18 Polled 43937416

H FHF Advance 624 ET

HH Advance 4075B ET

Sire

FHF 408 Rita 21W

LBB 201Y Beca 33C

LW 111L William 99W

Dam

Goble Daisy 201Y

*Complete, good patterned bull with nice performance. Dam is a very good 3 year old with 109.5 average on her first 2 calves! Grandmother is a DOD with 104.5 WWR in production. Top 1% of breed for WW and CW. Also top 10% or better for YW, M&G and REA.*

EPDs:	
BW	5.4
WW	74
YW	108
Milk	23
M&G	60
Scr	.7
Fat	.007
REA	.62
Marb	.15
Wts:	
BW	85
WW	713
YW	1131

## 64 OHR Homestretch 34D 34F

34F OHR 2/16/18 Polled 43985809

OHR Homestretch 1K 9D ET

NJW 73S W18 Hometown 10Y ET

Sire

ANL 60D Banner Girl 1K

OHR Elizabeth 142Z 34D

Dakitch MDK Caretaker 51B

Dam

OHR Queen of Diamonds 142Z

*Nice bull with good length, extra pigmentation and a very fine first calf heifer for a dam. She ratioed 105 on this calf. Her mother has a 120 WWR on her calves! He's in the top 10% for YW, SC and US. His sire sold for \$7000 2 years ago to Dr. Bill Isaacson and was our #1 performance bull that year. This bull could work on heifers too!*

EPDs:	
BW	4.4
WW	60
YW	106
Milk	25
M&G	55
Scr	1.4
Fat	.077
REA	.43
Marb	.12
Wts:	
BW	76
WW	566
YW	1113



Grandmother of lot 64 --->



## 65 OHR Homegrown 125Y 37F

37F OHR 2/17/18 Polled 43987049

NJW 73S W18 Homegrown 8Y ET

SHF Wonder M326 W18 ET

Sire

NJW P606 72N Daydream 73S

Ms Dakitch MDK Charity Lady 125Y

Harvie Dan T-Bone 196T

Dam

Ms Dakitch Charity Lady 72U

*Good bull with a very complete, smooth structure. Dam is a bigger cow with more bone and capacity - her production ratios are 96.1 for BW and 105.4 for WW. May work to breed heifers also, although the dam and sire are both bigger sized with good bone. Top 1% for Milk and M&G. Top 4%YW, Top 20% for CW and REA.*

EPDs:	
BW	3.8
WW	58
YW	108
Milk	39
M&G	68
Scr	1.0
Fat	.037
REA	.51
Marb	.02
Wts:	
BW	78
WW	594
YW	1011

**66****OHR Hombre 14Z 58F**

58F OHRR 2/26/18 Polled 43987050

NJW 135U 10Y Hometown 27A NJW 73S W18 Hometown10Y ET

Sire NJW 4037 34S Durango Vaca 135U

OHR Vera 41R 14Z SHF Vision R117 U38

Dam OHR Nikita 88G 41R

EPDs:	
BW	2.4
WW	59
YW	97
Milk	29
M&G	58
Scr	1.2
Fat	.037
REA	.52
Marb	.12
Wts:	
BW	75
WW	517
YW	1036

*Heifer Bull! Solid bull with balanced EPDs from a really good line of productive cows with great udderes. Dam and grandmother both have 102 WWR in production. Hometown sire worked great for su!*

**67****Grand Oblivion 2447 4A F7**

F7 3/04/18 Polled 43893000

C Double Your Miles 6077 ET CCR 5280

Sire C 88X Notice Me 1311 ET

Grand Pearl 4A CL 1 Domino 955W

Dam RB Miss 122L Encore P404

EPDs:	
BW	1.5
WW	60
YW	93
Milk	22
M&G	52
Scr	1.2
Fat	.037
REA	.44
Marb	.09
Wts:	
BW	95
WW	718
YW	1128

*March bull with extra length, good performance and an attractive look. Double Your Miles was 2017 National Champion. Dam maintains a 103 WWR in production. EPD's have been genetically enhanced and he is in the top 4% or better for REA, CW and CHB.*



**68 OHR Homebrew Z14 82F ET**

82F OHRR 3/08/18 Polled 43986171

<b>NJW 135U 10Y Hometown 27A</b>	NJW 73S W18 Hometown10Y ET
Sire	NJW 4037 34S Durango Vaca 135U
<b>Mohican Karen Z14</b>	TH 133U 719T Upgrade 69X
Dam	ANL 35U Victoria 59X

<u>EPDs:</u>	
BW	1.3
WW	59
YW	99
Milk	32
M&G	62
Scr	1.4
Fat	.032
REA	.57
Marb	.06
<u>Wts:</u>	
BW	86
WW	683
YW	1152

*Heavy muscled, deep middled, easy doing, dark colored son of the popular Hometown 27A! Dam was top selling female in Mohican's 2016 sale. She has wonderful depth, udder quality & eye appeal with a 112 WWR on her calves! He has very balanced EPDs ranking him in the top 10% for Milk, M&G and REA. Also we have sent in DNA for GE-EPDs and polled testing. Selling 1/2 interest and full possession.*

**Dam of lot 68 ----->**

*Embryos by 27A, Heavy Duty & Commitment Flushes for sale also! Owned with Dakitch, Mn.*

**69 OHR Shaker 68A 101F**

101F OHRR 3/21/18 Polled 43985820

<b>Dakitch MDK Caretaker 51B</b>	KJ 471T Border 679Z ET
Sire	Ms Makitch Mack Liz 28W
<b>OHR Queen Mattie 10M 68A</b>	HVH Progress 4L 30S
Dam	OHR Mattie 91F 10M

<u>EPDs:</u>	
BW	4.2
WW	58
YW	98
Milk	25
M&G	54
Scr	.8
Fat	.077
REA	.27
Marb	.03
<u>Wts:</u>	
BW	88
WW	611
YW	1136

*One of the younger bulls in the sale with extra shape, good length, big volume and plenty of pigment. Dam is powerful production ratio of 111%. Grandmother is a DOD with BWR of 95.6 and WWR of 104.8 on 12 calves! Top 25% or better for WW and YW.*

**70 OHR Caretaker 110B 128F**

128F OHRR 4/03/18 Polled 43985798

<b>Dakitch MDK Caretaker 51B</b>	KJ 471T Border 679Z ET
Sire	Ms Makitch Mack Liz 28W
<b>OHR Queen Mattie 10M 110B</b>	HVH Progress 4L 30S
Dam	OHR Mattie 91F 10M

<u>EPDs:</u>	
BW	4.2
WW	52
YW	88
Milk	24
M&G	50
Scr	.8
Fat	.067
REA	.24
Marb	.11
<u>Wts:</u>	
BW	84
WW	639
YW	1149

*Youngest bull in the sale. Dam is a full sister to bull above - she's a notch smaller in frame but same top quality in udder and good looks. Her production has been great also with a 107 WWR! This April bull has a bright future!*



~ Polled Hereford Heifers ~

**71**      ***OHR Banner Girl 25Z 10F***

10F OHRR      2/01/18      Polled      43985808

<b>OHR Homestretch 1K 9D ET</b>	NJW 73S W18 Hometown 10Y ET
Sire	ANL 60D Banner Girl 1K
<b>OHR Vera 86U 25Z</b>	SHF Vision R117 U38
Dam	OHR Revlon 41R 86U

*Show heifer prospect! This heifer has good depth, enough thickness, Extra pigment, flawless structure and a sweet look. Looks a lot like both grandmothers - if she produces like them then look out! 86U Pictured below is a DOD with 113.4 WWR. Sire sold for \$7000 in 2017 to Bill Isaacson. She is a breed improver for 16/20 traits and in Top 10% for CED, SC, MCE, US and REA.*

<u>EPDs:</u>	
BW	0.9
WW	53
YW	86
Milk	28
M&G	55
Scr	1.5
Fat	.017
REA	.57
Marb	.17
<u>Wts:</u>	
BW	62
WW	496
YW	940



Granddam of lot 71 ----->

**72**      ***OHR Princess 924 61F***

61F OHRR      2/25/18      Polled      43987051

<b>KCF Bennett Encore Z311 ET</b>	Schular On Target 22S
Sire	KCF Miss Revolution X338 ET
<b>LH Ms Princess 924</b>	LH Prince 584
Dam	III Ms Fortress H65

*Complete, moderate, attractive heifer by the popular Encore bull. Dam is high volume, good milking and has a 102 WWR. Top 5% for WW, YW and Marbling. A couple weeks early at birth =40#.*

<u>EPDs:</u>	
BW	3.6
WW	65
YW	106
Milk	25
M&G	57
Scr	1.1
Fat	.027
REA	.19
Marb	.34
<u>Wts:</u>	
BW	40
WW	473
YW	819

**73**      ***OHR Maiden 9D 89F***

89F OHRR      3/13/18      Polled      43985819

<b>OHR Homestretch 1K 9D ET</b>	NJW 73S W18 Hometown 10Y ET
Sire	ANL 60D Banner Girl 1K
<b>CKP 8003 Maiden 6122</b>	KJ 482Y Solution B003 ET
Dam	CKP Maiden 3086

*Fancy daughter of Homestretch, our 2017 high seller. In the top 10% of the breed for YW, Sc, CW, REA and CHB. This heifer is made very nice and will make a good cow.*

<u>EPDs:</u>	
BW	4.2
WW	60
YW	102
Milk	26
M&G	56
Scr	1.4
Fat	.017
REA	.60
Marb	.08
<u>Wts:</u>	
BW	72
WW	461
YW	710

# 74 OHR Right On Effie 106F

106F OHR 3/23/18 Polled 43987053

SR Right On 2203Z ET	Churchill Sensation 025X
Sire	NJW BW Ladysport Dew 78P ET
Remitall Effie 38P	Remitall Landslide 161L
Dam	Remitall Effie 131L

<u>EPDs:</u>	
BW	4.1
WW	53
YW	89
Milk	29
M&G	55
Scr	.9
Fat	-.033
REA	.57
Marb	.15
<u>Wts:</u>	
BW	79
WW	454
YW	758

*Fancy late March heifer raised by our 14 year old Effie cow that has written a big chapter her at OHR! She consistently brings in a good one and has a production ratio of 103. She has one of the best 2 year old bulls in the sale this year, a \$4000 bull last year and a \$5500 heifer pictured below to name a few! This heifer is a breed improver for 17 of 20 traits and top 10% for REA, Fat and CHB. She's a genetic gem!*



**Dam of Lot 74**

Maternal Sister to lot 74 --->



**97B**

# 75 OHR Lizza 17W 115F

115F OHR 3/28/18 Polled 43985805

Dakitch MDK Caretaker 51B	KJ 471T Border 679Z ET
Sire	Ms Makitch Mack Liz 28W
ANL R 32P Mindy 17W	Circle-D 22H Pacman 32P
Dam	ANL R 36N Mindy 30S

<u>EPDs:</u>	
BW	4.8
WW	58
YW	97
Milk	24
M&G	53
Scr	.6
Fat	.057
REA	.38
Marb	.07
<u>Wts:</u>	
BW	79
WW	578
YW	804

*Very good, dark colored, correct end of March heifer that has what it takes to show! Dam is very good uddered, high volume and always does a good job - 102.4 WWR. Caretaker daughters ratioing on their first year in production. Caretaker's dam has weaned 8 at 106.8%! Top 25% for WW and YW!*



**Lot 75**

Grandmother of Lot 74 --->  
Caretaker's dam



**28W**

# 76 OHR Queen Elizabeth 142Z 129F

129F OHR 4/03/18 Polled 43985799

<b>Dakitch MDK Caretaker 51B</b>	KJ 471T Border 679Z ET
Sire	Ms Makitch Mack Liz 28W
<b>OHR Queen Of Diamonds 142Z</b>	HVH Progress 4L 30S
Dam	BNC 4L Diamond Lil 110N

*Very good, high performance April heifer. Dam is high volume, good uddered and boasts a 120 WWR! Grandmother reads good also at 103.7! This heifer is correct and stout enough to show and should make a great cow!*

<u>EPDs:</u>	
BW	3.3
WW	54
YW	91
Milk	23
M&G	50
Scr	.8
Fat	.087
REA	.25
Marb	.07
<u>Wts:</u>	
BW	76
WW	648
YW	977



**Lot 76**

**Granddam of lot 76 --->**  
*Embryos by Ribeye & Durango For Sale*



**110N**

# 77 OHR Queen Lizzy 152Z 137F

137F OHR 4/07/18 Polled 43985802

<b>Dakitch MDK Caretaker 51B</b>	KJ 471T Border 679Z ET
Sire	Ms Makitch Mack Liz 28W
<b>OHR Queen Scarlett 68N 152Z</b>	HVH Progress 4L 30S
Dam	OHR Scarlett 68N ET

*Another very good April heifer by our senior herdsire Caretaker! Dam is a very good, big bodied Progress daughter with 106.8 WWR. Grandmother is a stout, super uddered Kodiak daughter with 101.4 MPPA - her mother was 109.9! 2 of our top selling bulls last year were sons of 68N. She has show potential too!*

<u>EPDs:</u>	
BW	4.1
WW	49
YW	86
Milk	21
M&G	46
Scr	.6
Fat	.077
REA	.19
Marb	.15
<u>Wts:</u>	
BW	83
WW	622
YW	984



**Lot 77**

**Grandmother of Lot 77 --->**  
**Senior Champion Female NDWS**



**68N**

**78****OHR Sunny 87T 142F**

142F OHRR 4/12/18 Polled 43985823

<b>Dakitch MDK Caretaker 51B</b>	KJ 471T Border 679Z ET
Sire	Ms Makitch Mack Liz 28W
<b>OHR Sunny 415E 87T ET</b>	RJH Momentum H45
Dam	MW Sunny 415E 1ET

*Another fancy April heifer by our senior herdsire Caretaker. Dam is high volume, great uddered and easy to look at. Her production records are great - only 91.6 BWR and 106.9 WWR! Her mother is a DOD with 105.8 WWR. This heifer is top 25% for BW, US, CW and REA.*

<b>EPDs:</b>
BW 1.7
WW 53
YW 86
Milk 23
M&G 50
Scr .9
Fat .047
REA .49
Marb .04
<b>Wts:</b>
BW 67
WW 477
YW 701

**79****OHR Lizzy 6032 144F**

144F OHRR 4/15/18 Polled 43985818

<b>Dakitch MDK Caretaker 51B</b>	KJ 471T Border 679Z ET
Sire	Ms Makitch Mack Liz 28W
<b>CKP Lolita 6032</b>	KJ 482Y Solution 8003 ET
Dam	CKP 196T Lolita 2080 ET

*Nice, young April heifer from a first calf heifer that has nice performance and very good udder quality. Should make a nice cow! Top 20% for CW and CHB.*

<b>EPDs:</b>
BW 3.1
WW 54
YW 90
Milk 24
M&G 51
Scr .7
Fat .057
REA .47
Marb .09
<b>Wts:</b>
BW 66
WW 480
YW 784

**80****OHR Betty Boop 7W 201F**

201F OHRR 5/24/18 Polled 43988038

<b>Dakitch MDK Caretaker 51B</b>	KJ 471T Border 679Z ET
Sire	Ms Makitch Mack Liz 28W
<b>ANL 145R Noodles 7W</b>	Grandview 7 Oaks Sonora 145R
Dam	Taleco 9B Noodles 25P

*End of May heifer that is well balanced and attractive with lots of pigment and darker brown color. Dam is a good milker and consistent producer. Fancy enough to show but really young!*

<b>EPDs:</b>
BW 4.1
WW 57
YW 98
Milk 23
M&G 52
Scr .8
Fat .022
REA .38
Marb .06
<b>Wts:</b>
BW 75
WW 519
YW 866

This sale will be broadcast live on the internet.

**DVAuction**  
Broadcasting Real-Time Auctions

*We have been using VitaFerm products in our herd for many years. It helps with the fertility and efficiency of our herd.*

**VITAFERM**®





**Red Power Bull Sale**  
16068 24th St SE  
Argusville, ND 58005

**Return Service Requested**



*The Girls!*

