

# Olson's *Red Power*

## Performance Bull & Female Sale

At the ranch ~ Argusville, ND ~ Noon meal ~ 1:00 Sale

Thursday **Feb. 15, 2018** Thursday

### *Powerful Red Angus!*



### *Excellent Herefords!*



### *105 Head Selling!*

- 36 - Red Angus Bulls*
- 14 - Red Angus Heifers*
- 10 - Red Angus Bred Heifers*
- 17 - Hereford Bulls*
- 12 - Hereford Heifers*
- 10 - Bred Hereford Cows*
- 6 - Commercial Heifers*

*Celebrating*  
**82 Years**  
*of excellence in  
registered cattle!*

## ~ General Sale Information ~

**Sale Time:** 1:00 CST, Thursday, February 15, 2018. Complimentary noon lunch.

**Location:** At the ranch. From Argusville on I-29: 7 West on Cass Co. #4, 1 North & ½ West. From Casselton on I-94: 10 North on ND #18, 5 West, 1 North & ½ East. 20 miles NW of Fargo.

**Motels:** Holiday Inn, Fargo 701-282-7200. Governors Inn, Casselton 888-847-4524.

**Airline Service:** Fargo Hector International Airport is served by United, American & Allegiant.

**Delivery:** Free delivery to central points up to 300 miles. We will work to facilitate further distances at cost. Take your bull home sale day and get \$50 off.

**Wintering:** We can keep your bull free of charge until April 1st, then we deliver.

**Guarantee:** All Cattle are fully guaranteed by the standards set by the American Red Angus and American Hereford Associations. Coming two-year-old and fall born bulls will be fertility checked prior to the sale. We will test yearlings before delivery of April 1st.

**Terms:** Terms of the sale are cash or check. Settlement must be made immediately following the sale before animals can be loaded out or delivered. Any corrections from the auction block or sale supplement sheet take priority over printed material in this sale catalog.

**Liability:** All attending the sale do so at their own risk. OHR assumes no responsibility for accident or injury.

**EPD's:** All EPDs are current as of January 25, 2018. As yearling weights, carcass ultrasound data and scrotal measurements are recorded the EPDs may change by sale day. Registration numbers are provided so you can research animals further with the breed associations.

**Cattle on Display:** All sale cattle are at the ranch. We invite you to stop prior to the sale and look them over and visit with us. Many of the mothers and sires are also here. Videos of the sale offering will also be available at our website ahead of the sale. Cattle will be displayed in pens next to our heated sale facility. This is a video sale - cattle will not enter a sale ring.

**Herd Health:** Our herd is Johnes Free. All bulls will be tested for BVD. All cattle were Vaccinated and boosted with Bovi Shield Gold 5 and Ultra One Shot 7 at weaning. They were poured with Ivomec at weaning and again in December. Vet work supervised by Dr Darin Peterson, Casselton Vet Service - 800-216-9985.

**Supplement Sheet:** More info will be available prior to the sale including: Ribeye, Marbling, Back Fat, Scrotal cm and Pelvic Areas. Also at our website; [www.olsonredpower.com](http://www.olsonredpower.com).

**Mail or Phone Bids:** Bidders unable to make the sale may contact the Olsons or a sale staff member to assist in the bidding process. DVAuction will broadcast the sale live on the internet where you can watch and bid. Further info on that listed below.

### Sale Staff:

Kyle Gilchrist, Auctioneer.....641-919-1077  
 John Meents, AHA.....419-306-7480  
 Luke Keller, Cattle Business Weekly.....701-471-1142  
 Kirby Goettsch, Farm & Ranch Guide.....605-380-3939  
 Steve Wolff, Wolff Cattle Services.....701-710-1574  
 Logan Hoffmann, DVAuction.....701-388-2618  
 Gary Fike, ARA-Commercial Marketing ....940-387-3502

<u>Page</u>	<u>Catalog Index</u>
2-5.....	Red Angus Reference Sires
6-19.....	Red Angus Bulls
20-25.....	Red Angus Heifers
26-27.....	Red Angus Bred Heifers
28.....	Polled Hereford Reference Sires
29-36.....	Polled Hereford Bulls
37-42.....	Polled Hereford Heifers
43-44.....	Polled Hereford Bred Cows
IBC.....	Commercial Heifers

**This sale will be broadcast live on the internet.**



1. Create an account at [www.dvauction.com](http://www.dvauction.com) under the register tab.
2. Apply for bidding approval by clicking on the "details" tab at least 24 hours prior to the auction. A DV representative will notify you once you have been approved.
3. Tune in for the sale and make your purchases.
  - ~ High speed internet is required for successful bidding.
  - ~ Our full-time support team can be reached at 402-316-5460
  - ~ Or type a message to the operator during the sale.



Cattlemen,

Welcome to our Red Power Performance Bull & Female Sale! It seems like there are more people than ever selling bulls! With many new breeders and sales you have never heard of you may be thinking where should I buy a bull? At OHR we work hard to provide really good bulls that will work for you! Every good bull starts with a really good mother - the more great cows you can stack in a pedigree the better and more predictable the bull will be. Genetic selection is made on a balance of multiple traits with performance as a priority. We take pride in developing the bulls on a roughage based ration to ensure they will be sound, problem free and have longevity. Finally we stand behind our cattle 100%. Your success is ours!

We have a great group of powerful yearling bulls along with 15 very good 2016 born bulls for those of you that prefer an older bull. The sale heifer pen is loaded with good ones! This we are also offering 10 Red Angus bred heifers and 10 Hereford bred cows as a bonus.

Our family has been in the registered cattle business since 1936 and we are committed to providing you great Red Angus & Herefords that are productive, problem free and developed to last. Contact us if you have any questions.

Sincerely,  
The Olsons



The *Olsons*

Back: Laura, Craig, Caryn, Carl, Lindsay, Dru.  
Middle: Jeanne and Edward Front: Evie, Maxwell, Stetson and Casey

Sale Facility ~ 701-484-5779

The Olson Family Cell Phones

Edward.....701-238-3601  
Carl.....701-361-0684  
Jeanne.....701-866-5779  
Lindsay.....701-388-5801  
Craig.....701-367-6704  
Caryn.....701-367-4434

**RED OHR ANGUS**

*Polled Herefords*

Ed & Jeanne Olson - Carl & Lindsay Olson  
16068 24th St SE - Argusville, ND 58005  
Email: olsoncandc@aol.com

Phone/fax 701-484-5779  
Ed's cell 701-238-3601  
Carl's cell 701-361-0684

[www.olsonredpower.com](http://www.olsonredpower.com)

*Breeding High Quality Registered Cattle Since 1936!*

# ~ Red Angus Reference Sires ~

## A Pie Game Plan 0618

PIE 0618      9/15/10      100% 1A      1407095

<b>VGW Game Plan 508</b>	LCC IMF B054M
Sire	VGW PT Dory 0361
<b>Pie Prime Canyon 927</b>	BUF Crk Chf 824-1658
Dam	Pie Primette 723

<u>EPDs:</u>	
BW	0.6
WW	77
YW	123
Milk	25
Stay	12
Fat	0
REA	-.09
Marb	.45
<u>Wts:</u>	
BW	68
WW	727
YW	NA

*Dam was one of the top sellers in Pieper's cow sale. She boasts a 113 MPPA! This bull puts a very attractive look on his calves with good muscle and performance. Progeny have measured very well for REA and Marbling. This bull consistently produces some of our top sellers! Contact us for semen on Game Plan!*



**Game Plan daughter -->**



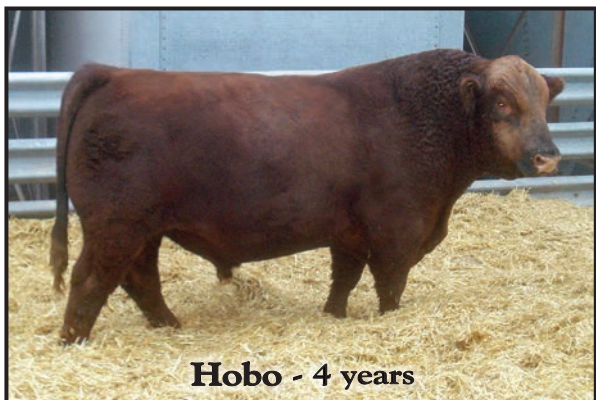
## B L83 Hobo 106

NDL 106      2/14/11      100% 1A      1448758

<b>BUF Crk Hobo 1961</b>	BUF Crk Hobo 1413
Sire	BUF CR Carrie VC1174
<b>L83 Miss Mulberry 913</b>	Red Fine Line Mulberry 26P
Dam	L83 Morning Glory 320

<u>EPDs:</u>	
BW	-2.5
WW	55
YW	88
Milk	15
Stay	14
Fat	.03
REA	-.24
Marb	.62
<u>Wts:</u>	
BW	84
WW	681
YW	1195

*A great son of the old Hobo bull from our friends the Lodoens at Westhope, ND. Was used with great success on heifers the first 2 years. Sired some of our best calves - keeping the birth weight down with darker color and good growth. Semen available.*



# ~ Red Angus Reference Sires ~

## C Red Global Trust 21T

GNAS 21T      1/19/07      100% 1A      1378943

LCC Above & Beyond 1300J      Lchman Above Heaven 1018F  
Sire      HXC 701G

Red Global's Lakina 87R      Milk Crk Cub 722  
Dam      Red Angus Medos Lakina 770

*Purchased in 2009 from Northline Red Angus in Sask, Canada. Trust is A power bull with a lower BW EPD and a pedigree filled with high accuracy, low birth sires. Produced lots of high quality bulls and heifers. Now the daughters are leaving their mark! Owned with Rich Leiseth and Tony Schuler in Minnesota. Trust semen is very limited.*

EPDs:	
BW	-1.5
WW	66
YW	108
Milk	25
Stay	7
Fat	-.02
REA	-.15
Marb	.12
Wts:	
BW	84
WW	834
YW	1410



**Trust - 22 months**

**Trust daughter ~ ~**



**77Z**

## D OHRR 6W Krugerand 149B

OHRR 149B      10/05/14      100% 1A      Applied For

Six Mile Kruger 11Z      Red Six Mile Ruger 221X  
Sire      Red Glesbar Syring 046S

OHRR Sakic Lass 54P-6W      Red Six Mile Sakic 832S  
Dam      OHRR 214 Copper Lass 54P

*Easy doing, correct, big testicles, high performance and a great mother! Dam is good uddered, deep bodied, easy doing and holds a 103.3 MPPA. We believe he is a notch better than his sire who we lost a year ago and is the best son we had produced to date. We nice group of calves for this years sale and will have even more for next year! There is a powerful maternal brother selling as a feature 2 year old in this years sale!*

EPDs:	
BW	-0.7
WW	55
YW	79
Milk	21
Stay	12
Fat	-.05
REA	.10
Marb	-.03
Wts:	
BW	75
WW	695
YW	1160



**Krugerand 149B**

**dam ~ ~**



**6W**



## ~ Red Angus Reference Sires ~

### E Six Mile Spencer 111B

111B SIXM      2/14/14      100% 1A      1702775

**MRLA New Era 87Y**

MRLA 53W

Sire

Red MRLA Miss 845S

**Red Six Mile Shawnee 116T**

5L Norseman King 2291

Dam

Red Crowfoot Shawnee 9124J

*Dark, heavy muscled, high performance bull with an attractive look!  
Selected also for his outcross pedigree. This will be the second group of calves to sell by Spencer. The more we use him the more we like him!  
Owned with Lodoen Cattle Company - Westhope, ND.*

**EPDs:**

BW	2.2
WW	57
YW	87
Milk	20
Stay	7
Fat	-.03
REA	.46
Marb	.03

**Wts:**

BW	86
WW	826
YW	na



### F Six Mile Buckshot 297B

297B SIXM      3/12/14      100% 1A      1702778

**XO Crowfoot 0102X**

Red Crowfoot Moonshine 8081U

Sire

XO Crowfoot Blackbird 8810U

**Red Crowfoot Goldette 6314S**

Red SSS Ole 746P

Dam

Red Crowfoot Goldette 3048N

*Buckshot was selected for his excellent mother, unique pedigree and top end performance. We lost him after the first breeding season and have only a small amount of semen so the Buckshot calves will be rare.  
Owned with Lodoen Cattle Company - Westhope, ND.*

**EPDs:**

BW	1.0
WW	69
YW	103
Milk	21
Stay	6
Fat	.03
REA	.26
Marb	.10

**Wts:**

BW	82
WW	849
YW	na



**Buckshot's dam ~ ~**





# ~ Red Angus Reference Sires ~

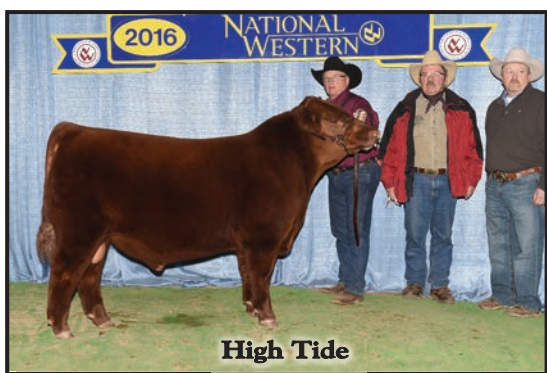
## G Red Bar-E-L High Tide 63C

YHB 63C 2/17/15 100% 1A 3488669

<b>Red U-2 Justified 235Z</b>	Red U-2 Mama's Boy 167X
Sire	Red U-2 Duchess 386X
<b>Red Bar-E-L Bessie 91W</b>	Red SVR Jack 65S
Sire	Red Bar-E-L Bessie 259T

<u>EPDs:</u>	
BW	3.1
WW	65
YW	97
Milk	7
Stay	6
Fat	.01
REA	-.38
Marb	-.28
<u>Wts:</u>	
BW	
WW	818
YW	

*Reserve Champion Junior Bull Calf at the 2016 National Red Angus Show. We purchased High Tide with Lodoens of Westhope, ND during the 2016 Denver Stock Show. He weighed 870 on 9/15 and 1190 on 12/17 for a gain of 3.6/day since weaning. He has the muscle, depth, performance and backing of the great Bessie cow family. Because he came from Canada his EPDs need time to develop.*



**High Tide**

## H Pie Saga 380

PIE 380 2/16/13 100% 1A 1651704

<b>LSF Saga 1040Y</b>	Beckton Epic R397 K
Sire	LSF Minola T7172 W9041
<b>Pie Poteet 1046</b>	VGW Game Plan 508
Dam	Pie BJ Division 2194

<u>EPDs:</u>	
BW	-1.3
WW	54
YW	94
Milk	18
Stay	12
Fat	0
REA	-.20
Marb	.52
<u>Wts:</u>	
BW	77
WW	815
YW	1431

*Saga has a good birth to weaning and yearling spread. He had a 14.5 REA, .32 backfat and 4.78% IMF. Saga calves are dark colored, correct and have extra muscle and thickness. Both heifers and bulls are very high quality. His performance numbers continue to go up with his third calf crop now in the books. Saga makes them correct and easy to look at!*



**27D - Saga daughter**

**149C - Saga son →**

*A feature 2 year old that sells in this sale! He is a maternal brother to reference sire D!*



**OHRR 6W Copper Saga 149C**

# ~ Red Angus Yearling Bulls ~

## 1 OHRR 69C Red Zone 4E

4E OHRR 1/23/17 100% 1A 3801798

CSF Red Zone 1C

C-Bar Evolution 107Y

Sire

PFFR Ms Logan 620

L83 Cadence 69C

Six Mile Wind Chill 828W

Dam

L83 Fayet 068

*Heifer Bull! Moderate framed, long bodied, dark and deep! From a first calf heifer that Lodoens showed in Denver as a calf. Started at 66 pounds and made it to 701 at 205 day adjusted.*

### EPDs:

BW -2.1  
 WW 45  
 YW 71  
 Milk 17  
 Stay 10  
 Fat 0  
 REA -.10  
 Marb .16  
Wts:  
 BW 66  
 WW 701  
 YW 1141



## 2 OHRR 10Y Copper Sun 9E

9E OHRR 1/27/17 100% 1A 3801722

Pie Game Plan 0618

VGW Game Plan 508

Sire

Pie Prime Canyon 927

OHRR 141T Copper Trista 10Y

Red Global Trust 21T

Dam

OHRR Copper Sharee 2M-141T

*Heifer bull with a powerful pedigree including Game Plan and Trust! Granddam is a Dakota Copper daughter from the powerful 2M cow that was a donor for us. Should breed good performance too!*

### EPDs:

BW -2.9  
 WW 51  
 YW 83  
 Milk 29  
 Stay 12  
 Fat .02  
 REA -.01  
 Marb .21  
Wts:  
 BW 70  
 WW 591  
 YW 1029

### Olson's Red Power Advantage:

- + More performance, muscle & maternal excellence.
- + Carcass, performance, scrotal & pelvic data available.
- + Bulls tested for BVD & from Johnes Free herd.
- + Bulls developed on roughage ration to ensure soundness.
- + Free wintering on bulls over \$2500, 300 mile delivery.
- + \$50 discount if you take your bull home sale day.
- + Reputation breeder of quality registered cattle since 1936!

**2018 Spring Red Angus Breed EPD averages -(Non Parent)**

<u>BW</u>	<u>WW</u>	<u>YW</u>	<u>Milk</u>	<u>Stay</u>	<u>Marb</u>	<u>REA</u>	<u>Fat</u>
-2.0	57	90	19	10	.42	.07	0

**3****OHRR 3Y Hi Tide 16E**

16E OHRR

1/31/17

100% 1A

3801728

**Bar-E-L High Tide 63C**

Red U-2 Justified 235Z

Sire

Red Bar-E-L Bessie 92W

**OHRR 53W Sweet Anabel 3Y**

JECA U228

Dam

OHRR 107J Grand Annabelle 53

*Very heavy muscled, super correct, high volume and from two very good cow families! Definitely one of our top bulls from the class of 2017. Should sire calves with extra performance, length of body and a very attractive, fault free look! Dam side traces to great Annabelle family!*

*Retaining ½ interest & possession until June 1st..*

EPDs:

BW 1.0  
 WW 63  
 YW 98  
 Milk 22  
 Stay 8  
 Fat .06  
 REA -.05  
 Marb .09

Wts:

BW 79  
 WW 696  
 YW 1176

**Lot 3****4****OHRR 141T Hi Tide 17E**

17E OHRR

2/01/17

100% 1A

3801682

**Bar-E-L High Tide 63C**

Red U-2 Justified 235Z

Sire

Red Bar-E-L Bessie 92W

**OHRR Copper Sharee 2M-141T**

OHRR Dakota Copper 29K

Dam

OHRR 503 Copper Sharee 2M

*Heifer bull with good length, nice structure and some muscling too! Dam is a Dakota Copper daughter from the powerful 2M cow that was a donor for us. Should make some nice replacement females and also breed good performance!*

EPDs:

BW -0.8  
 WW 51  
 YW 74  
 Milk 20  
 Stay 10  
 Fat .02  
 REA -.10  
 Marb -.11

Wts:

BW 63  
 WW 650  
 YW 1130

**5****OHRR 8001 Dak Krugeran 40E**

40E OHRR

2/09/17

100% 1A

3801686

**OHRR 6W Krugerand 149B**

Six Mile Kruger 11Z

Sire

OHRR Sakic Lass 54P-6W

**LMG Miss Essence 8001**

Red Fine Line Mulberry 26P

Dam

Red DMM Miss Essence 58M

*Heifer bull with a pedigree stacked with some very productive cows! Dam has produced some powerful and attractive females that have sold very well for us. This bull could really breed some power too!*

EPDs:

BW -1.0  
 WW 51  
 YW 74  
 Milk 19  
 Stay 11  
 Fat 0  
 REA .01  
 Marb .09

Wts:

BW 72  
 WW 621  
 YW 1030

# 6

# OHRR 7300 Dak Direct 21E

21E OHRR

2/02/17

100% 1A

3801834

**Andras New Direction R240**

Andras In Focus B152

Sire

Andras Kuruba B111

**LMG Miss Welma 7300**

SRN Heavens Door 2095

Dam

LMG Welma 9010

*Heavy muscled, super correct, dark colored, high volume, big testicles and good performance! From the high volume, good uddered Welma cow family - dam has 103.2 MPPA and granddam has a 104.4! This same cow family produced Compass (also by New Direction). He was used on heifers and has calves selling in this sale! This bull could be used on heifers as well! Excellent herdbull prospect here!*

EPDs:

BW -1.9  
 WW 62  
 YW 102  
 Milk 16  
 Stay 4  
 Fat .04  
 REA .05  
 Marb .21

Wts:

BW 72  
 WW 691  
 YW 1171



# 7

# OHRR 32T-GP Dak Canyon 27E

27E OHRR

2/06/17

100% 1A

3801674

**Pie Game Plan 0618**

VGW Game Plan 508

Sire

Pie Prime Canyon 927

**OHRR 112H Canyon Kuruba 32T**

SRR Red Canyon 213

Dam

Red Howe Ms Kuruba 112H

*High performance Game Plan son with extra length and frame . Dam traces to breed legends Logan and Grand Canyon. She has been very productive and maintains a 104.4 MPPA! Game Plan's mother has a 113 MPPA! Should be a real performance machine!*

EPDs:

BW -0.8  
 WW 64  
 YW 101  
 Milk 23  
 Stay 9  
 Fat 0  
 REA -.05  
 Marb .43

Wts:

BW 80  
 WW 731  
 YW 1217





## 8

## OHRR 116Z Hi Tide 32E

32E OHRR 2/07/17 75% solid red

## Bar-E-L High Tide 63C

Red U-2 Justified 235Z

Sire

Red Bar-E-L Bessie 92W

## OHRR 116Z - commercial

OHRR Dakota Landmark 5T

Dam

Commercial solid red

*Here is a powerful High Tide son with good performance and a smaller birth weight. We are trying to figure out the mother's parents using DNA and hope to have results by sale day.*

## EPDs:

BW NA  
 WW NA  
 YW NA  
 Milk NA  
 Stay NA  
 Fat NA  
 REA NA  
 Marb NA

## Wts:

BW 64  
 WW 614  
 YW 1101



## 9

## OHRR 44B Dak Spencer 37E

37E OHRR 2/08/17 100% 1A 3801792

## OHRR 6W Krugerand 149B

Six Mile Kruger 11Z

Sire

OHRR Sakic Lass 54P-6W

## OHRR 109Y-39X Anabelle 44B

OHRR 58R Gold Trust 39X

Dam

OHRR 015T-113 Anabelle 109Y

*Long bodied, well muscled, nicely made son of Krugerand that should breed some good performance! Dam is a good young cow with a 102.3 MPPA and traces to the great Annabelle 107J.*

## EPDs:

BW 1.2  
 WW 64  
 YW 96  
 Milk 21  
 Stay 10  
 Fat -.02  
 REA .01  
 Marb .17

## Wts:

BW 75  
 WW 669  
 YW 1117

## 10

## OHRR 75Y Copper Saga 42E

42E OHRR 2/09/17 100% 1A 3801714

## Pie Saga 380

Pie Saga 1040Y

Sire

Pie Poteet 1046

## OHRR 25R Copper Lana 75Y

OHRR 107J Landslide 113R

Dam

OHRR 42L Copper Honey 25R

*Heifer bull with a pedigree stacked with some very productive cows! Dam has 101.5 MPPA and granddam has a 104 MPPA and is still in our herd at 13 years! This bull has good structure as you'd expect from a Saga son!*

## EPDs:

BW -1.6  
 WW 49  
 YW 81  
 Milk 21  
 Stay 12  
 Fat -.02  
 REA -.07  
 Marb .36

## Wts:

BW 74  
 WW 636  
 YW 1062

# 11 OHRR 102B Game Plan 49E

49E OHRR 2/13/17 100% 1A 3801790

<b>Pie Game Plan 0618</b>	VGW Game Plan 508
Sire	Pie Prime Canyon 927
<b>OHRR 99W Dk Kruger 102B</b>	Six Mile Kruger 11Z
Dam	OHRR Foxy Anna 22L-99W

<u>EPDs:</u>	
BW	-0.2
WW	65
YW	102
Milk	25
Stay	12
Fat	0
REA	.09
Marb	.31
<u>Wts:</u>	
BW	64
WW	677
YW	1154

*Heifer bull with a 64 pound birth weight and good performance by getting to 677 at 205! Game Plan consistently puts out a high percentage of good ones and this guy certainly fits that mold! Dam has 102.9 MPPA and grandmother 99W sits at 101.7. Nicely balanced EPDs also. One of the really good combination bulls in the sale!*



# 12 OHRR 60A Dakota Saga 54E

54E OHRR 2/15/17 100% 1A 3801774

<b>Pie Saga 380</b>	Pie Saga 1040Y
Sire	Pie Poteet 1046
<b>OHRR 146T Trustee Ana 60A</b>	OHRR 58R Gold Trust 39X
Dam	OHRR Copper Annabelle 146T

<u>EPDs:</u>	
BW	-0.3
WW	59
YW	96
Milk	18
Stay	12
Fat	.02
REA	-.23
Marb	.36
<u>Wts:</u>	
BW	78
WW	712
YW	1208

*Long bodied, darker colored, correct made bull with good performance! Dam goes back to Trust and Dakota Copper - both known for great females! Lighter birth weight with good growth!*



# 13 OHRR 6Y Game Plan 56E

56E OHRR 2/17/17 100% 1A 3801724

<b>Pie Game Plan 0618</b>	VGW Game Plan 508
Sire	Pie Prime Canyon 927
<b>OHRR 146T Trista Anna 6Y</b>	Red Global Trust 21T
Dam	OHRR Copper Annabelle 146T

*Lots of muscle shape, good performance, dark color and a really good structure in this great bull! What else would you expect with Game Plan, Trust and 29K - these herdsires have all walked our pastures and left a huge impact here at OHR! Dam has 102.3 MPPA and grandmother has a 103.4. One of our very best!*

<u>EPDs:</u>	
BW	0.2
WW	71
YW	112
Milk	24
Stay	11
Fat	0
REA	-.15
Marb	.33
<u>Wts:</u>	
BW	77
WW	701
YW	1192



Lot 13



Lot 14

# 14 OHRR 211T Hi Tide 59E

59E OHRR 2/19/17 100% 1A 3801690

<b>Bar-E-L High Tide 63C</b>	Red U-2 Justified 235Z
Sire	Red Bar-E-L Bessie 92W
<b>OHRR 9502 Avalana 211T</b>	Pie Avalanche 381
Dam	Messmer Ophelia 9502

*Another well made, nicely muscled High Tide son with good performance! This one is from a maternal sister to Dakota Copper 29K and the performance sire, Avalanche. Caution on the EPDs because High Tide came from Canada and started way behind.*  
*Retaining 1/2 interest & possession until June 1st.*

<u>EPDs:</u>	
BW	1.3
WW	63
YW	95
Milk	10
Stay	7
Fat	-.02
REA	-.16
Marb	.13
<u>Wts:</u>	
BW	80
WW	732
YW	1250

# 15 OHRR 70R Dak Spencer 64E

64E OHRR 2/21/17 100% 1A 3801642

<b>Six Mile Spencer 111B</b>	MRLA New Era 87Y
Sire	Red Six Mile Shawnee 116T
<b>OHRR 15M Advanna Fayet 70R</b>	4L Advantage R9N
Dam	OHRR 38K Fayet 15M

*Heifer Bull! Dam comes from the good uddered productive Fayet cow family. R9N and his mother were Champion Cow/Calf at the NILE in Billings. Spencer puts a nice stamp on his calves with good muscle and performance.*

<u>EPDs:</u>	
BW	-0.3
WW	46
YW	71
Milk	19
Stay	9
Fat	-.02
REA	.09
Marb	.10
<u>Wts:</u>	
BW	71
WW	617
YW	1045

# 16 OHRR 150T Copper Tide 69E

69E OHRR 2/28/17 100% 1A 3801840

**Bar-E-L High Tide 63C**

Red U-2 Justified 235Z

Sire

Red Bar-E-L Bessie 92W

**OHRR 96N Copper Casey 150T**

OHRR Dakota Copper 29K

Dam

OHRR 118 Ms Explorer 96N

*Moderate framed, heavy muscled, correct son of High Tide! Judging by what the dam has produced in the past and the way this guy is made I would say he could work on heifers. Should make some nice females and calves that will feed well too!*

*Retaining 1/2 interest & possession until June 1st..*

EPDs:	
BW	0.9
WW	52
YW	74
Milk	14
Stay	8
Fat	.01
REA	-.32
Marb	-.04
Wts:	
BW	76
WW	662
YW	1139



# 17 OHRR 69U Dak Spencer 76E

76E OHRR 2/26/17 100% 1A 3801700

**Six Mile Spencer 111B**

MRLA New Era 87Y

Sire

Red Six Mile Shawnee 116T

**OHRR Ms Grande Lakota 69U**

Lchmn Grand Canyon 1244G

Dam

TBS Ms Lakota 60Z

*High performance, well muscled, long bodied son of our performance sire Spencer! Dam is a heavy milking, hard working Grand Canyon daughter with a 103.4 MPPA. Another top end bull that should breed excellent performance!*

EPDs:	
BW	0.8
WW	55
YW	86
Milk	26
Stay	6
Fat	-.02
REA	.33
Marb	.15
Wts:	
BW	81
WW	713
YW	1235

# 18 OHRR 132C ND Compass 81E

81E OHRR 2/28/17 100% 1A 3801816

**OHRR 85Y-ND Compass 79C**

Andras New Direction R240

Sire

OHRR 9010 Elle Lana 85Y

**OHRR 97S 15F Kr Scarlet 132C**

Six Mile Kruger 11Z

Dam

OHRR 15F Scarlet Diva 97S

*High performance son of Compass with good muscle and length! Dam has a 102.8 MPPA, comes from the great uddered Scarlet cowfamily and did a super job on this her first calf. Great udders, high production and dark color also from the top side!*

EPDs:	
BW	3.2
WW	77
YW	119
Milk	10
Stay	6
Fat	.01
REA	.22
Marb	.34
Wts:	
BW	93
WW	727
YW	1255



## 19 OHRR 25R Game Plan 84E

84E OHRR      3/01/17      100% 1A      Applied For

<b>Pie Game Plan 0618</b>	VGW Game Plan 508
Sire	Pie Prime Canyon 927
<b>OHRR 42L Copper Honey 25R</b>	OHRR Dakota Copper 29K
Dam	OHRR Macs Honey 42L

*Another great Game Plan with good performance, muscle and a great structure! Dam has a 104 MPPA and raised this guy at 12 year old. 72# birth weight and dam side would say he could be used on heifers. Not yet registered so EPD's are just pedigree estimates.*

<u>EPDs:</u>	
BW	-1.2
WW	60
YW	90
Milk	25
Stay	11
Fat	-.01
REA	.0
Marb	.40
<u>Wts:</u>	
BW	72
WW	612
YW	1065



## 20 OHRR 131C Compass 86E

86E OHRR      3/02/17      100% 1A      Black      3801814

<b>OHRR 85Y-ND Compass 79C</b>	Andras New Direction R240
Sire	OHRR 9010 Elle Lana 85Y
<b>OHRR 0710 Blazin Tina 131C</b>	Jacobson Blazin On 0057
Dam	C-T Tina 0710

*Very complete, well muscled and nice structured bull from a first calf heifer. He is black hided and his mother and grandmother are also. He should work well for use on heifers and shows some muscle and performance too boot!*

<u>EPDs:</u>	
BW	-1.5
WW	58
YW	92
Milk	19
Stay	6
Fat	.03
REA	.26
Marb	.20
<u>Wts:</u>	
BW	66
WW	680
YW	1255

## 21 OHRR 105C Dak Kruger 102E

102E OHRR      3/07/17      100% 1A      3801826

<b>OHRR 6W Krugerand 149B</b>	Six Mile Kruger 11Z
Sire	OHRR Sakic Lass 54P-6W
<b>OHRR 21T Thea Krissy 105C</b>	Six Mile Kruger 11Z
Dam	LMF Thea 21T

*High performance, dark colored Krugerand son from a first calf heifer. Dam has a 104.8 MPPA and granddam has a 105.1 MPPA! Very balanced data on paper also! Not to bad for a first calf heifer!*

<u>EPDs:</u>	
BW	0.2
WW	65
YW	93
Milk	21
Stay	11
Fat	-.01
REA	.23
Marb	-.08
<u>Wts:</u>	
BW	77
WW	759
YW	1349

## 22 OHRR 30B Dak Kruger 114E

114E OHRR 3/11/17 100% 1A 3801778

<b>OHRR 6W Krugerand 149B</b>	Six Mile Kruger 11Z
Sire	OHRR Sakic Lass 54P-6W
<b>OHRR 3Y-5T Annabelle 30B</b>	OHRR Dakota Landmark 5T
Dam	OHRR 53W Sweet Anabel 3Y

*Another good Krugerand son with good performance! Dam a good young cow with a 102.9 MPPA and grandmother, 3Y, has a 108.5! Balanced bull with balanced data.*

<u>EPDs:</u>
BW 0.7
WW 66
YW 99
Milk 19
Stay 10
Fat .0
REA .18
Marb .24
<u>Wts:</u>
BW 78
WW 672
YW 1132

## 23 OHRR 123E

123E OHRR 3/14/17 50% RA Not registered

<b>L83 Hobo 106</b>	BUF Crk Hobo 1961
Sire	BUF CR Carrie VC1174
<b>7953 - Red Crossbred</b>	Commercial
Dam	Commercial

*A good Hobo son with nice length and performance from a red cross bred cow we have been using as a recip. The Hobo sons have been very good and the daughters work very well!*

<u>EPDs:</u>
BW NA
WW NA
YW NA
Milk NA
Stay NA
Fat NA
REA NA
Marb NA
<u>Wts:</u>
BW 91
WW 652
YW 1092

## 24 OHRR 125E

125E OHRR 3/16/17 50% RA Not Registered

<b>L83 Hobo 106</b>	BUF Crk Hobo 1961
Sire	BUF CR Carrie VC1174
<b>7532 - Red Crossbred</b>	Commercial
Dam	Commercial

*Another good Hobo son from a solid red commercial recip cow.*

<u>EPDs:</u>
BW NA
WW NA
YW NA
Milk NA
Stay NA
Fat NA
REA NA
Marb NA
<u>Wts:</u>
BW 85
WW 675
YW 1118

## 25 OHRR 99W Saga Lad 132E

132E OHRR 3/23/17 100% 1A 3801694

<b>Pie Saga 380</b>	Pie Saga 1040Y
Sire	Pie Poteet 1046
<b>OHRR Foxy Anna 22L-99W</b>	OHRR 107J Landslide 113R
Dam	OHRR Foxy Roxy 22L

*High performance, long, dark colored Saga bull. Dam has a 101.7 MPPA and granddam has a 107.8 MPPA! Both are high volume, good uddered cows that haven't missed!*

<u>EPDs:</u>
BW 1.2
WW 60
YW 100
Milk 21
Stay 12
Fat .02
REA .03
Marb .34
<u>Wts:</u>
BW 114
WW 721
YW 1300

## 26 OHRR 39R Dakota Hobo 136E

136E OHRR      3/26/17      100% 1A      3801640

<b>L83 Hobo 106</b>	BUF Crk Hobo 1961
Sire	BUF CR Carrie VC1174
<b>OHRR 5E Dakota Classy 39R</b>	OHRR Dakota Copper 29K
Dam	OHRR Ms Classy 5E

*Another good, dark Hobo son with good performance! Dam a good 13 year old cow with a 100.9 MPPA. He's a couple months younger than some of the bulls in this sale and he's really been growing well!*

EPDs:	
BW	1.9
WW	65
YW	96
Milk	12
Stay	13
Fat	.02
REA	-.17
Marb	.50
Wts:	
BW	92
WW	728
YW	1259

## 27 LRA Redemption 7156

7156 1GL      3/31/17      100% 1A      3706773

<b>2RJL Attachment B707</b>	Brown JVJ Redemption Y1334
Sire	Lazy YJ Eudora 227-0180
<b>LRA Sakic 244</b>	Red Six Mile Sakic 832S
Dam	RHRA Martha Rob 651F 364

*Long bodied, high performance, well muscled grandson of Redemption! He was our pick of the bull calves in the Leddy Dispersion. His dam has a 113 WWR on her calves for a 109.5 MPPA in their herd! He is very balanced in his design and numbers on paper! One of the younger bulls in this offering!*

EPDs:	
BW	-1.4
WW	66
YW	103
Milk	23
Stay	11
Fat	.01
REA	.02
Marb	.29
Wts:	
BW	82
WW	839
YW	1239



## 28 OHRR 211U Dk Spencer 144E

144E OHRR      4/01/17      100% 1A      3801678

<b>Six Mile Spencer 111B</b>	MRLA New Era 87Y
Sire	Red Six Mile Shawnee 116T
<b>OHRR Dakota Copper Queen 211U</b>	Lchman Copper Rob 1204D
Dam	Messmer Ophelia 9502

*High performance, long, well muscled Spencer son from a full sister to Dakota Copper 29K! Dam is an easy doing, productive cow with a 102.5 MPPA and still going strong in our herd! This April bull should breed good performance and muscle!*

EPDs:	
BW	1.9
WW	61
YW	92
Milk	20
Stay	9
Fat	.01
REA	.19
Marb	.11
Wts:	
BW	98
WW	762
YW	1333

## ~ Red Angus Fall Bulls ~

# 29

## Collier Brilliance B842

B842 D1      12/30/16      100% 1A      3616696

**Collier Brilliance B138**

SAV Brilliance 8007

Sire

Andras Lucinda R252

**OHRR 49Z Ms Hobo 78B**

L83 Hobo 106

Dam

OHRR 808-72X Mixx Wix 49Z

*Heavy muscled, easy doing, high performance end of December black bull. We were fortunate to be able to buy back his dam in the Collier Sale last spring and this impressive calf was at her side! Dam is a very nice 3 year old whos's dam has a 102.2 MPPA and is from the Wix cowfamily that produced our top seller 2 years ago.*

EPDs:

BW 1.8  
WW 65  
YW 106  
Milk 20  
Stay 5  
Fat -.01  
REA .03  
Marb .44

Wts:

BW 92  
WW 836  
YW 1290



# 30

## OHRR 22Z Dak Spencer 152D

152E OHRR      9/19/16      100% 1A      Applied

**Six Mile Spencer 111B**

MRLA New Era 87Y

Sire

Red Six Mile Shawnee 116T

**OHRR 84W-T Trista Wix 22Z**

Red Global Trust 21T

Dam

OHRR Macs Ms Wix 716-84W

*Moderate framed, deep bodied, heavy muscled fall born bull that is very sound and moves well! Dam is a very nice Trust daughter from the same cowfamily as the bull above. Grandmother 84W has a 108.5 MPPA! This bull could work well for heifers too!*

EPDs:

BW 0.9  
WW 64  
YW 98  
Milk 21  
Stay 8  
Fat -.02  
REA .15  
Marb .08

Wts:

BW 62  
WW 577  
YW 979





## ~ Red Angus 2 Year Old Bulls ~

### 31 OHRR 35A-20R GP Saga 53D

53D OHRR      2/18/16      100% 1A      3580745

<b>Pie Saga 380</b>	Pie Saga 1040Y
Sire	Pie Poteet 1046
<b>OHRR 20R-GP Ms Robbie 35A</b>	Pie Game Plan 0618
Dam	OHRR 6H Ms Robusta 20R

*Heavy muscled, very complete coming 2 year old that has all the right tools. He also has a reasonable 68# birth weight and could be well suited for use on heifers or cows if you need to keep birth weight down.*

<u>EPDs:</u>	
BW	-1.5
WW	51
YW	89
Milk	22
Stay	13
Fat	-.02
REA	-.08
Marb	.67
<u>Wts:</u>	
BW	68
WW	559
YW	984



**Lot 31**

### 32 OHRR 30B ND Buckshot 63D

63D OHRR      2/24/16      100% 1A      3580737

<b>Six Mile Buckshot 297B</b>	XO Crowfoot 0102X
Sire	Red Crowfoot Goldette 6314S
<b>OHRR 3Y-5T Annabelle 30B</b>	OHRR Dakota Landmark 5T
Dam	OHRR 53W Sweet Anabel 3Y

*This powerful coming 2 year old is big, heavy muscled, long bodied, dark colored, correct and high performance. To top it off he's sired by Buckshot (who we selected for his wonderful mother) and out of the great Annabelle cowfamily - his dam has a 102.9 MPPA! We lost Buckshot after the first breeding season and this could be his best son!*  
*Retaining 1/2 interest & possession until June 1st.*

<u>EPDs:</u>	
BW	1.9
WW	79
YW	119
Milk	18
Stay	7
Fat	.03
REA	.22
Marb	.32
<u>Wts:</u>	
BW	81
WW	717
YW	1180



**Lot 32**

**33****OHRR 95R Kruger 78D**

78D OHRR

3/01/16

100% 1A

3581545

**Six Mile Kruger 11Z**

Red Six Mile Ruger 221X

Sire

Red Glesbar Syring 046S

**OHRR 15L Dak Mahogany 95R**

OHRR Dakota Copper 29K

Dam

OHRR 65H Mahogany 15L

*Heavy muscled, very complete, dark colored coming 2 year old! Dam side has the great productive Mahogany cow family known for high volume, good uddered females! Dam has 101.7 MPPA. This bull should work well on heifers also. He could produce some great females!*

EPDs:

BW -1.0  
 WW 51  
 YW 72  
 Milk 22  
 Stay 12  
 Fat -.03  
 REA -.10  
 Marb .10

Wts:

BW 66  
 WW 616  
 YW 1045



Great granddam of lot 33 ~

**34****OHRR 39R Dakota Saga 97D**

97D OHRR

3/15/16

100% 1A

3580749

**Pie Saga 380**

LSF Saga 1040Y

Sire

Pie Poteet 1046

**OHRR 5E Dakota Classy 39R**

OHRR Dakota Copper 29K

Dam

OHRR Ms Classy 5E

*Powerful coming 2 year old with good length of body! Dam has been a very consistent producer with a 100.9 MPPA and she's still going in our herd at 13 years! 29K bred cows for us at 12 years old - lots of longevity here!*

EPDs:

BW 1.1  
 WW 60  
 YW 94  
 Milk 15  
 Stay 12  
 Fat .01  
 REA 0  
 Marb .27

Wts:

BW 80  
 WW 654  
 YW 1147



## 35 OHRR 142A Mahgny Buck 105D

105D OHRR 3/17/16 100% 1A 3580863

Six Mile Buckshot 297B

XO Crowfoot 0102X

Sire

Red Crowfoot Goldette 6314S

OHRR 95R Mahogany Trista 142A

OHRR 58R Gold Trust 39X

Dam

OHRR 15L Dak Mahogany 95R

*Heifer Bull! Here is a very complete coming 2 year old that probably should have been pictured too. He's dark colored, long sided with enough muscle and a good structure. Buckshot, Trust, 29K and the Mahogany line means he should produce good females!*

### EPDs:

BW -1.0  
 WW 59  
 YW 88  
 Milk 21  
 Stay 8  
 Fat -.02  
 REA -.11  
 Marb .14

### Wts:

BW 68  
 WW 648  
 YW 1050

## 36 OHRR 6W Copper Saga 149C

149C OHRR 10/01/15 100% 1A 3580875

Pie Saga 380

LSF Saga 1040Y

Sire

Pie Poteet 1046

OHRR Sakic Lass 54P-6W

Red Six Mile Sakic 832S

Dam

OHRR 214 Copper Lass 54P

*Powerfully constructed fall bull with extra muscle shape, great length, good depth of middle, an attractive front end and a super sound structure! This Sakic mother has been very productive, with a nice udder, big hip and good volume. She is also the mother of our herdsire, Krugerand! He was used some in our herd and we should have calves by sale day!*

*Retaining 1/2 interest & possession until June 1st.*

### EPDs:

BW -1.5  
 WW 48  
 YW 79  
 Milk 22  
 Stay 12  
 Fat -.01  
 REA .03  
 Marb .14

### Wts:

BW 80  
 WW 732  
 YW 1017



Lot 36

Dam of lot 36 ~



6W

**Ranch Tested. Rancher Trusted.**

# Red Angus

## ~ Red Angus Heifers ~

### 37 OHRR 151T Ms Hi Tide 10E

10E OHRR      1/28/17      100% 1A      3801698

<b>Bar-E-L High Tide 63C</b>	Red U-2 Justified 235Z
Sire	Red Bar-E-L Bessie 92W
<b>OHRR 572 Copper Tina 151T</b>	OHRR Dakota Copper 29K
Dam	WR Ms Tommy Girl 572

*Very attractive High Tide heifer with show potential - she has the look with good thickness, nice depth and extra length. Dam is a good 29K daughter with a 101.7 MPPA. High Tide & 29K were both shown successfully, these heifer could also!*

<u>EPDs:</u>	
BW	0.7
WW	64
YW	94
Milk	13
Stay	8
Fat	0
REA	-.25
Marb	-.05
<u>Wts:</u>	
BW	68
WW	659
YW	1107



**Lot 37**

### 38 OHRR 40C Ms Essence 12E

12E OHRR      1/29/17      100% 1A      3801804

<b>OHRR 6W Krugerand 149B</b>	Six Mile Kruger 11Z
Sire	OHRR Sakic Lass 54P-6W
<b>OHRR 8001-New Essence 40C</b>	Andras New Direction R240
Dam	LMG Miss Essence 8001

*Fancy heifer with good length and correctness from a first calf heifer out of 8001 who has produced many very good heifers - some have been sale toppers! This heifer has the pedigree to be very productive.*

<u>EPDs:</u>	
BW	-0.5
WW	56
YW	86
Milk	17
Stay	8
Fat	-.01
REA	.08
Marb	.20
<u>Wts:</u>	
BW	64
WW	581
YW	853

### 39 OHRR 32Z Siri Lana 18E

18E OHRR      2/01/17      100% 1A      3801760

<b>OHRR 6W Krugerand 149B</b>	Six Mile Kruger 11Z
Sire	OHRR Sakic Lass 54P-6W
<b>OHRR 215S-T Ava Trista 32Z</b>	Red Global Trust 21T
Dam	OHRR 9502 Avalana 215S

*Complete February heifer from a very nice Trust daughter. Trust daughters are known for great udder quality and being very productive. Granddam, 215S, has maintained a 107.7 MPPA - she's a maternal sister to Dakota Copper 29K!*

<u>EPDs:</u>	
BW	-1.1
WW	55
YW	84
Milk	24
Stay	11
Fat	-.03
REA	.04
Marb	.01
<u>Wts:</u>	
BW	70
WW	596
YW	996



**40****OHRR 30U Miss Spencer 33E**

33E OHRR

2/07/17

100% 1A

3801680

**Six Mile Spencer 111B**

MRLA New Era 87Y

Sire

Red Six Mile Shawnee 116T

**OHRR Bonita Sharee 60P-30U**

Red Brylor Master Plan 17M

Dam

OHRR 2M Meta Sharee 60P

*Moderate, complete, dark and high volume Spencer heifer than traces to our donor and power cow, 2M! Spencer puts good thickness and volume in his calves.*

EPDs:

BW 0.2  
 WW 54  
 YW 85  
 Milk 12  
 Stay 5  
 Fat -.04  
 REA -.07  
 Marb .05

Wts:

BW 60  
 WW 617  
 YW 1040

**41****OHRR 46Y Lady Spencer 44E**

44E OHRR

2/11/17

100% 1A

3801726

**Six Mile Spencer 111B**

MRLA New Era 87Y

Sire

Red Six Mile Shawnee 116T

**OHRR 99W-228 Foxy Anna 46Y**

JECA U228

Dam

OHRR Foxy Anna 22L-99W

*Fancy, angular, clean fronted February heifer that goes back to some high volume, great uddered, good milking females in 99W and 22L. This heifer is fancy enough to show with the capacity to make a great cow!*

EPDs:

BW 0.7  
 WW 52  
 YW 81  
 Milk 25  
 Stay 10  
 Fat -.03  
 REA .39  
 Marb .07

Wts:

BW 73  
 WW 615  
 YW 1041

**Lot 41****Lot 42****42****OHRR 20Z Ms Hi Tide 45E**

45E OHRR

2/11/17

100% 1A

3801762

**Bar-E-L High Tide 63C**

Red U-2 Justified 235Z

Sire

Red Bar-E-L Bessie 92W

**OHRR 001 Cherry Trista 20Z**

OHRR 58R Gold Trust 39X

Dam

2CC Cherry Bomb X001

*Straight lined, fancy heifer with good length and body. Dam is a nice Trust granddaughter with a 103.6 MPPA! The High Tide calves are very easy to look at - this one is no exception!*

EPDs:

BW 2.6  
 WW 61  
 YW 93  
 Milk 13  
 Stay 8  
 Fat 0  
 REA -.18  
 Marb .03

Wts:

BW 91  
 WW 634  
 YW 1069

**43****OHRR 32C Missy Elle 55E**

55E OHRR

2/17/17

100% 1A

3801818

**OHRR 85Y-ND Compass 79C**

Andras New Direction R240

Sire

OHRR 9010 Elle Lana 85Y

**OHRR 90W Missy Nexus 32C**

Silveiras Mission nexus 1378

Dam

OHRR Macs Candy 28R-90W

*High volume, stout made, dark colored, angular heifer with a pretty good front end. Show potential and definitely cow potential! Hard to believe she started at 64 pounds and was raised by a first calf heifer. Lots of good udders and productive cows backing up this beauty!*

EPDs:

BW -1.4  
 WW 69  
 YW 111  
 Milk 13  
 Stay 5  
 Fat .03  
 REA .42  
 Marb .28

Wts:

BW 64  
 WW 625  
 YW 1010

**Lot 43****44****OHRR X803 Ms Shannee 65E**

44E OHRR

2/11/17

100% 1A

3801726

**Six Mile Spencer 111B**

MRLA New Era 87Y

Sire

Red Six Mile Shawnee 116T

**KFRA Miss Mojito X803**

Coley's Mojito 503R

Dam

KFRA Miss G Canyon 4803

*Moderate framed, attractive, high volume Spencer daughter with very balanced data. Dam traces to Grand Canyon and has a 102.4 MPPA. Spencer puts a stamp on them!*

EPDs:

BW 0.7  
 WW 52  
 YW 81  
 Milk 25  
 Stay 10  
 Fat -.03  
 REA .39  
 Marb .07

Wts:

BW 67  
 WW 583  
 YW 987

**Lot 44**

**45****OHRR 146T Siri Anna 87E**

87E OHRR

3/02/17

100% 1A

3801684

EPDs:

BW -0.8  
 WW 58  
 YW 92  
 Milk 23  
 Stay 12  
 Fat -.01  
 REA -.18  
 Marb .36

Wts:

BW 66  
 WW 653  
 YW 1080

**Pie Saga 380**

LSF Saga 1040Y

Sire

Pie Poteet 1046

**OHRR Copper Annabelle 146T**

OHRR Dakota Copper 29K

Dam

SHHM Annabelle 107J

*Very attractive, correct March Saga heifer with really good show potential! Dam has 103.4 MPPA and grandmother boasts a 108.3 MPPA! Balanced EPD's too.*

**Lot 45****Granddam of lot 45 ~****107J****46****OHRR 84Y Mahgny Syrie 106E**

106E OHRR

3/09/17

100% 1A

3801738

EPDs:

BW 0.2  
 WW 59  
 YW 88  
 Milk 15  
 Stay 12  
 Fat -.02  
 REA -.09  
 Marb .14

Wts:

BW 79  
 WW 633  
 YW 1118

**OHRR 6W Krugerand 149B**

Six Mile Kruger 11Z

Sire

OHRR Sakic Lass 54P-6W

**OHRR-MM 56N Mahogany 84Y**

L83 Entourage

Dam

OHRR 63G Adv Mahogany 56N

*Complete, correct March heifer with lots of depth and good thickness. Dam is from the great uddered, productive Mahogany family that has done very well for us. Granddam sold for \$14,500 to Majestic Meadows in the Santa Sale!*

**Lot 46****Granddam of lot 46 ~****56N**

**47****OHRR 121A Diva Elana 116E**

116E OHRR 3/11/17 100% 1A 3801776

**Andras New Direction R240**

Andras In Focus B152

Sire

Andras Kuruba B111

**OHRR 85Y-Hobo Elana 121A**

L83 Hobo 106

Dam

OHRR 9010 Elle Lana 85Y

**EPDs:**

BW	-0.6
WW	61
YW	100
Milk	12
Stay	9
Fat	.04
REA	.06
Marb	.40

**Wts:**

BW	76
WW	611
YW	1091

*An own daughter of New Direction from the great Lana cowfamily that produced the Compass bull! Both Landmark and Hobo on the dam side - high volume, dark colored, meat machines! Lots of great udders and productive females here also - should make a great cow!*

**48****OHRR 138C Copper Demi 122E**

122E OHRR 3/14/17 100% 1A 3801812

**OHRR 85Y-ND Compass 79C**

Andras New Direction R240

Sire

OHRR 9010 Elle Lana 85Y

**OHRR 116A Copper Sage 138C**

Pie Saga 380

Dam

OHRR 29S-Copper Trista 116A

**EPDs:**

BW	-1.6
WW	60
YW	98
Milk	15
Stay	7
Fat	.04
REA	.14
Marb	.36

**Wts:**

BW	60
WW	553
YW	953

*Complete, correct March heifer with lots of depth and good thickness. Dam is from the great uddered, productive Mahogany family that has done very well for us. Granddam sold for \$16,500 to Majestic Meadows in the Santa Sale!*

**Great granddam of Lot 48 -->**



**49****OHRR 19T Hobo Fayet 124E**

124E OHRR

3/14/17

100% 1A

3801670

**L83 Hobo 106**

BUF Crk Hobo 1961

Sire

BUF CR Carrie VC1174

**OHRR 83L Kima Fayet 19T**

SRR Red Canyon 213

Dam

OHRR 182H Fayet 83L

*Really good, high volume, well muscled Hobo daughter that is easy to look at! Dam is from the Fayet family with Grand Canyon and Logan. Old school red angus genetics here but in a very attractive package!*

**EPDs:**

BW -1.5  
 WW 58  
 YW 91  
 Milk 15  
 Stay 10  
 Fat -.02  
 REA -.25  
 Marb .56

**Wts:**

BW 72  
 WW 708  
 YW 1230

**50****OHRR 1A Sara of Wix 139E**

139E OHRR

3/28/17

100% 1A

3801770

**Pie Saga 380**

LSF Saga 1040Y

Sire

Pie Poteet 1046

**OHRR 60Y-Vic Miss Wix 1A**

VGW Tremor 112

Dam

OHRR 808 Trista of Wix 60Y

*Younger heifer with good performance, length and correct structure. Dam has a 101.3 MPPA and granddam by Trust has a 103.4 MPPA! This is the Wix family that has been so productive for us!*

**EPDs:**

BW -0.1  
 WW 66  
 YW 111  
 Milk 18  
 Stay 11  
 Fat .0  
 REA -.03  
 Marb .33

**Wts:**

BW 80  
 WW 692  
 YW 1170

**Granddam of lot 50 ~**

## ~ Red Angus Bred Heifers ~

### 51 OHRR 116B Copper Tina 6D

6D OHRR 1/23/16 100% 1A 3580869

<b>OHRR 59Y Copper Hobo 2A</b>	L83 Hobo 106
Sire	OHRR 47L Copper Lana 59Y
<b>OHRR 28R Vics Tana 116B</b>	VGW Tremor 112
Dam	OHRR 745 Macks Tana 28R

*Exposed to OHRR 114X Mhg Game Plan 154C on 4/17/17 to 5/28/17.  
Then to OHRR 60Y Saga of Wix 155C from 6/15/17 to 8/01/17.  
Checked 40 days pregnant on 8/20/17.*

EPDs:	
BW	-2.0
WW	57
YW	89
Milk	14
Stay	9
Fat	-.00
REA	-.15
Marb	.41

### 52 OHRR 89Y-SG Gold Siri 27D

27D OHRR 2/05/16 100% 1A 3580799

<b>Pie Saga 380</b>	Pie Saga 1040Y
Sire	Pie Poteet 1046
<b>OHRR 58R Classy Gold 89Y</b>	OHRR Dakota Landmark 5T
Dam	OHRR 63K Summer Gold 58R

*Exposed to OHRR 114X Mhg Game Plan 154C on 4/17/17 to 5/28/17.  
Then to TWG Vessel U63D from 6/15/17 to 7/11/17.  
Checked 90 days pregnant on 8/20/17.*

EPDs:	
BW	-1.4
WW	42
YW	72
Milk	12
Stay	10
Fat	-.04
REA	-.30
Marb	.53

### 53 OHRR 44B-2A Copper Belle 62D

62D OHRR 2/23/16 100% 1A 35807559

<b>OHRR 59Y Copper Hobo 2A</b>	L83 Hobo 106
Sire	OHRR 47L Copper Lana 59Y
<b>OHRR 109Y-39X Anabelle 109Y</b>	OHRR 58R Gold Trust 39X
Dam	OHRR 015T-113 Anabelle 109Y

*Exposed to TWG Vessel U63D from 4/17/17 to 5/28/17.  
Then to OHRR 60Y Saga of Wix 155C from 6/15/17 to 8/01/17.  
Checked 90 days pregnant on 8/20/17.*

EPDs:	
BW	1.9
WW	74
YW	114
Milk	13
Stay	10
Fat	-.03
REA	-.10
Marb	.56

### 54 OHRR 141T Saga Sharee 66D

66D OHRR 2/25/16 100% 1A 3580835

<b>Pie Saga 380</b>	Pie Saga 1040Y
Sire	Pie Poteet 1046
<b>OHRR Copper Sharee 2M-141T</b>	OHRR Dakota Copper 29K
Dam	OHRR 503 Copper Sharee 2M

*Exposed to OHRR 114X Mhg Game Plan 154C on 4/17/17 to 5/28/17.  
Then to TWG Vessel U63D from 6/15/17 to 7/11/17.  
Checked 75 days pregnant on 8/20/17.*

EPDs:	
BW	-0.6
WW	52
YW	85
Milk	24
Stay	13
Fat	.03
REA	-.05
Marb	.24

### 55 OHRR 72D

72D OHRR 2/29/16 100% 1A 3580767

<b>Pie Saga 380</b>	Pie Saga 1040Y
Sire	Pie Poteet 1046
<b>OHRR 146T Tristee Ana 60A</b>	OHRR 58R Gold Trust 39X
Dam	OHRR Copper Annabelle 146T

*Exposed to OHRR 114X Mhg Game Plan 154C on 4/17/17 to 5/28/17.  
Then to TWG Vessel U63D from 6/15/17 to 7/11/17.  
Checked 105 days pregnant on 8/20/17.*

EPDs:	
BW	-0.7
WW	41
YW	72
Milk	23
Stay	12
Fat	.03
REA	-.15
Marb	.39

## 56 OHRR 87R CPR Shawnee 77D

77D OHRR 3/01/16 100% 1A 3580797

<b>OHRR 59Y Copper Hobo 2A</b>	L83 Hobo 106
Sire	OHRR 47L Copper Lana 59Y
<b>OHRR 104M Copper Casey 87R</b>	OHRR Dakota Copper 29K
Dam	OHRR 1098 Ms Casey 104M

*Exposed to OHRR 6W Copper Saga 149C 4/17/17 to 6/07/17.  
Then to OHRR 60Y Saga of Wix 155C 6/15/17 to 8/01/17.  
Checked 60 days pregnant on 8/20/17.*

<u>EPDs:</u>	
BW	-1.2
WW	39
YW	54
Milk	21
Stay	11
Fat	-.03
REA	-.11
Marb	.22

## 57 OHRR 4Z-32T Hobo Anna 83D

83D OHRR 3/03/16 100% 1A 3580697

<b>L83 Hobo 106</b>	Buf Crk Hobo 1961
Sire	L83 Miss Mulberry 913
<b>OHRR 32T-120X Cnyn Anna 4Z</b>	OHRR 107J Chief Trust 120X
Dam	OHRR 112H Canyon Kuruba 32T

*Exposed to OHRR 114X Mhg Game Plan 154C 4/17/17 to 5/28/17.  
Then to OHRR 60Y Saga of Wix 155C 6/15/17 to 8/01/17.  
Checked 120 days pregnant on 8/20/17.*

<u>EPDs:</u>	
BW	-3.7
WW	54
YW	85
Milk	19
Stay	12
Fat	.04
REA	-.08
Marb	.45

## 58 OHRR 13Y-53T Tristi Gema 88D

88D OHRR 3/11/16 100% 1A 3580705

<b>Pie Game Plan 0618</b>	VGW Game Plan 508
Sire	Pie Prime Canyon 927
<b>OHRR 53T Trista 13Y</b>	Red Global Trust 21T
Dam	OHRR 18B Foxy Vanna 53T

*Exposed to OHRR 60Y Saga of Wix 155C 6/15/17 to 8/01/17.  
Checked 60 days pregnant on 8/20/17.*

<u>EPDs:</u>	
BW	2.6
WW	76
YW	123
Milk	21
Stay	10
Fat	.04
REA	-.01
Marb	.11

## 59 OHRR 23Y Hobo Anabel 120D

120D OHRR 3/27/16 100% 1A 3580729

<b>L83 Hobo 106</b>	Buf Crk Hobo 1961
Sire	L83 Miss Mulberry 913
<b>OHRR 32T-113 Annabelle 23Y</b>	OHRR 107J Landslide 113R
Dam	OHRR 112H Canyon Kuruba 32T

*Exposed to TWG Vessel U63D bull from 6/15/17 to 7/11/17.  
Then to Red Bar-E-L Classic Crome 148D from 7/11/17 to 8/20/17.  
Checked 16 days pregnant on 8/20/17.*

<u>EPDs:</u>	
BW	-0.2
WW	54
YW	86
Milk	18
Stay	12
Fat	-.01
REA	-.27
Marb	.37

## 60 OHRR 132B Mahgny Sara 131D

131D OHRR 4/04/16 100% 1A 3580831

<b>Six Mile Spencer 111B</b>	MRLA New Era 87Y
Sire	Red Six Mile Shawnee 116T
<b>OHRR 84Y Mahogany Lana 132B</b>	OHRR Dakota Landmark 5T
Dam	OHRR-MM 56N Ms Mahgny 84Y

*In with TWG Vessel U63D bull from 4/17/17 to 5/30/17.  
Then with OHRR 60Y Saga of Wix 155C from 6/15/17 to 8/01/17.  
Checked 20 days pregnant on 8/20/17.*

<u>EPDs:</u>	
BW	1.4
WW	60
YW	92
Milk	12
Stay	9
Fat	-.09
REA	-.17
Marb	.62

~ Hereford Reference Sires ~

**A Dakitch MDK Caretaker 51B**

MDK 51B      2/15/14      Polled      43476433

**KJ 471T Border 679Z ET**      TH SHR 605 57G Bismarck 243R ET

Sire      KJ HVH 33N Radisson 471T ET

**Ms Makitch Mack Liz 28W**      Harvie Traveler 69T

Dam      Ms Makitch Mack Liz 98S

EPDs:	
BW	3.6
WW	65
YW	109
Milk	19
M&G	51
Scr	.9
Fat	.106
REA	.48
Marb	.08
Wts:	
BW	87
WW	875
YW	1495

*Homozygous Polled! Heavy muscled, high performance, deep middled, dark colored and short marked bull from a great cow family. Dam has a 109 WWR, granddam is 105.3 and great granddam is 106.5 & DOD! 14.95 REA, 3.42 Marbling, and 39 scrotal. Top 5% of breed for WW, YW and Carcass Weight. Top 20% or better for REA, CEM & US. Owned with Dakitch Hereford Farms, Mn. Semen available.*



**Caretaker -12 months**

Dam of Caretaker --->



**28W**

**B OHR Cooperstown 47R 37C**

OHRR 37C      2/06/15      Scurred      43650370

**NJW 73S W18 Hometown 10Y ET**      SHF Wonder M326 W18 ET

Sire      NJW P606 72N Daydream 73S

**FJ Lady Valerie 47R**      FJ Mr Catalyst 11J

Sire      FJ View Lady 36H

EPDs:	
BW	2.0
WW	54
YW	90
Milk	33
M&G	60
Scr	1.0
Fat	.046
REA	.54
Marb	.19
Wts:	
BW	81
WW	737
YW	1244

*Very heavy muscled, deep bodied, long sided bull with a flawless structure. He is sired by National Champion, Hometown. His mother is a Dam of Distinction with a 111 WWR on 10 calves! Top 10% of the breed for Milk and M&G. Top 20% or better for REA, Marb, Carcass Wt. and BII index! Many of our heaviest 2017 calves at weaning are sired by him!*



**37C**

Dam of 37C --->



**R107**



~ Polled Hereford 2 Year Old Bulls ~

**61**

**OHR Frontier 42B 21D**

OHRR 21D      2/02/16      Polled      43759409

<b>OHR Homefront 1K 51B ET</b>	NJW 73S W18 Hometown 10Y ET
Sire	ANL 60D Banner Girl 1K
<b>OHR Gloria 14Z 42B</b>	RJH Momentum H45
Sire	OHR Vera 41R 14Z

<u>EPDs:</u>	
BW	4.0
WW	63
YW	99
Milk	27
M&G	59
Scr	1.4
Fat	-.004
REA	.59
Marb	.05
<u>Wts:</u>	
BW	76
WW	626
YW	1104

*Big, long sided, short marked bull sired by Homefront who topped our Sale in 2015 at \$9500 to Hillsvie and Woodcrest. Another full brother sold last year to Bill Isaacson for \$7000. Dam raised him as a first calf heifer(105 WWR)- she traces to one of our best Kodiak daughters! We used him on heifers last year. Top 10% or better for WW, YW, M&G, Scrotal & REA!*



Sire of lots 61 & 62 - 10 months

Great Granddam of lot 61 --->



**62**

**OHR Frontier 110B 40D**

OHRR 40D      2/12/16      Scurred      43760410

<b>OHR Homefront 1K 51B</b>	NJW 73S W18 Hometown 10Y ET
Sire	ANL 60D Banner Girl 1K
<b>OHR Queen Mattie 10M 110B</b>	HVH Progress 4L 30S
Sire	OHR Mattie 91F 10M

<u>EPDs:</u>	
BW	4.6
WW	52
YW	88
Milk	26
M&G	53
Scr	1.1
Fat	.036
REA	.33
Marb	.28
<u>Wts:</u>	
BW	72
WW	638
YW	1130

*Moderate sized, deep middled, thick made, correct son of Homefront. with a 72 pound birth weight he could work on heifers but he is a bit high on birth EPD. Progress 30S is a trait leader for calving ease. Dam has a 107 WWR. Granddam 10M kept birth weights down and was a Dam of Distinction sired by the legendary Kodiak!*



**63****OHR Carefree 38P 44D**

44D OHRR

2/14/16

Polled

43759408

**Dakitch MDK Caretaker 51B**

KJ 471T Border 679Z ET

Sire

KJ HVH 33N Radison 471T ET

**Remitall Effie 38P**

Remitall Landslide 161L

Sire

Remitall Effie 131L

*Powerful 2 year old that is a thick, deep, stout made, easy doing bull with good performance. Dam is one of our favorite cows with a perfect udder, she works on any bull you use. She has a production ratios of 104.3 WWR, 104 REA and 106 IMF. Top 10% or better for YW, REA, CHB, Carcass Weight and Udder Score!*

**EPDs:**

BW	5.2
WW	58
YW	100
Milk	20
M&G	49
Scr	.9
Fat	.046
REA	.55
Marb	.11
<b>Wts:</b>	
BW	79
WW	650
YW	1195

**Lot 63****Dam of lot 63 --->****38P****64****OHR Homeboy 202Z 68D**

OHRR 68D

2/26/16

Polled

43759410

**NJW 73S W18 Hometown 10Y ET**

SHF Wonder M326 W18 ET

Sire

NJW P606 72N Daydream 73S

**OHR Sarahs Nikita 202Z ET**

VCR East Kodiak 506E

Sire

Haroldson's Sarah 20X 22J

*Heavy muscled, moderate framed son of the National Champion! Dam raised our top selling heifer in 2016. She has a maternal and performance pedigree with Keynote, Kodiak & Raider with a 102 WWR. Nicely balanced EPD profile also.*

**EPDs:**

BW	3.8
WW	54
YW	93
Milk	27
M&G	54
Scr	1.1
Fat	.016
REA	.51
Marb	.14
<b>Wts:</b>	
BW	78
WW	566
YW	1105

**22J - Lot 64's granddam**

**Maternal Sister to lot 64 --->**  
**High selling heifer in 2016 sale!**

**45C**

**65****OHR Bailey 25Z 94D**

94D OHRR

3/13/16

Polled

43759416

**Perks OHR 124W Bailout 3055**

TH 75J 243R Bailout 144U ET

Sire

TH 24S 45P Loretta 124W

**OHR Vera 86U 25Z**

SHF Vision R117 U38

Sire

OHR Revlon 41R 86U

*Heifer Bull! Moderate, complete, well balanced coming 2 year old who's sire sold for \$8250 and was a 3/4 brother to the \$105,000 Right Track. Grandmother is a Dam of Distinction with a 113.4 WWR on her calves! Mother is a nice daughter of Vision which has Ribeye, Progress, Governor and 20X in the pedigree. Loaded with maternal!*

EPDs:

BW	-0.2
WW	38
YW	61
Milk	27
M&G	45
Scr	.7
Fat	.006
REA	.32
Marb	.11
<u>Wts:</u>	
BW	59
WW	531
YW	1019

**86U - Granddam of lot 65**

**Great granddam of lot 65 --->**  
**Champion Female 1997 NDWS**

**66****OHR Bailey 47R 96D**

OHRR 96D

3/14/16

Polled

43759420

**Perks OHR 124W Bailout 3055**

TH 75J 243R Bailout 144U ET

Sire

TH 24S 45P Loretta 124W

**FJ Lady Valerie 47R**

FJ Mr Catalyst 11J

Sire

FJ View Lady 36H

*Solid coming 2 year old with good performance and lots a muscle. Maternal brother to Cooperstown - sire of some of the top yearling bulls in this sale! Mother is a Dam of Distinction with a 111% WWR on 10 calves! Granddam, 124W, has a 109.7 WWR also!*

EPDs:

BW	2.6
WW	45
YW	73
Milk	28
M&G	51
Scr	.5
Fat	-.004
REA	.38
Marb	-.06
<u>Wts:</u>	
BW	79
WW	697
YW	1169

**Lot 66**

**Dam of lot 66 --->**





**67****OHR Bailey 87T 100D**

100D OHR

3/16/16

Polled

43759407

**Perks OHR 124W Bailout 3055**

TH 75J 243R Bailout 144U ET

Sire

TH 24S 45P Loretta 124W

**OHR Sunny 415E 1ET**

RJH Momentum H45

Sire

MW Sunny 415E 1ET

*Heifer Bull with a super mother, good muscling, moderate frame and very good structure! Dam is a beautiful, productive cow with great production ratios: BWR 91.6, WWR 109.9, YWR 106.7 & REA 103! Grandmother is a Dam of Distinction with 105.8 WWR. He's in the top 20% for BW, REA and CHB!*

EPDs:	
BW	1.5
WW	47
YW	75
Milk	25
M&G	48
Scr	.7
Fat	-.004
REA	.51
Marb	.01
Wts:	
BW	70
WW	611
YW	1089

**Lot 67**

Granddam of lot 67 ---&gt;

**415E***Dru, Carl, Stetson, Lindsay and Casey (front) at the ND Winter Shows*

Contact

**OLSON****Hereford Ranch**

16068 24th St SE - Argusville, ND 58005

Carl 701-361-0684 ~ Ed 701-238-3601 ~ Ranch 701-484-5779

[www.olsonredpower.com](http://www.olsonredpower.com)*Breeding High Quality Registered Herefords Since 1936!*

Hereford EPD Averages for 2016 &amp; 2017 Calves - (Non Parent)

BW	WW	YW	Milk	M&G	Scr	Fat	REA	Marb.
3.1	51	82	23	49	.9	.009	.36	.11



~ Polled Hereford Yearling Bulls ~

**68**

**OHR Hannaford 56Z 23E**

23E OHRR      2/03/17      Polled      43874402

<b>OHR Cooperstown 47R 37C</b>	NJW 73S W18 Hometown 10Y ET
Sire	FJ Lady Valerie 47R
<b>OHR Vera 38P 56Z</b>	SHF Vision R117 U38
Sire	Remital Effie 38P

EPDs:	
BW	2.6
WW	50
YW	79
Milk	28
M&G	53
Scr	1.1
Fat	.011
REA	.48
Marb	.17
Wts:	
BW	75
WW	742
YW	1182

*Long bodied, high performance bull with good muscling and 100% pigmentation. Grandmother Effie is ideal in size, type and udder with a 103.7 WWR - still in our herd at 14 years old! 47R, grandmother on topside is still in our herd at 13 years - she's a DOD with 111 WWR! Twin to 70# heifer that was split and raised by a foster dam from birth. Longevity, productivity and one of our best young bulls!*



Granddam of lot 68 --->



**69**

**OHR Mr Cooper 46C 28E**

28E OHRR      2/06/17      Polled      43874399

<b>OHR Cooperstown 47R 37C</b>	NJW 73S W18 Hometown 10Y ET
Sire	FJ Lady Valerie 47R
<b>OHR Cheyenne 202Z 46C</b>	TH 49U 719T Sheyenne 3X
Sire	OHR Sarahs Nikita 202Z ET

EPDs:	
BW	1.3
WW	55
YW	87
Milk	26
M&G	54
Scr	1.0
Fat	.036
REA	.48
Marb	.16
Wts:	
BW	71
WW	767
YW	1278

*High performance, long bodied, well muscled, dark colored son of our powerful bull Cooperstown! Dam is a first calf heifer who's full sister was our top selling heifer in 2016. Due to injury this bull was raised by a foster dam from birth. Grandmother has a 102 WWR. 47R and mother of Sheyenne are DODs! This bull is in the top 25% or better for BW, M&G and REA - also a breed improver for 16 of 20 traits!*



# 70 Dakitch MDK OHR Z14 Lux 80E

80E MDK 2/17/17 Polled 43794993

<b>NJW PMH 66X 156T Lux 205A ET</b>	CMR GVP Mr Maternal 156T
Sire	NJW 78P 4037 Luxury 66X ET
<b>Mohican Karen Z14</b>	TH 133U 719T Upgrade 66X
Sire	ANL 35U Victoria 59X

EPDs:	
BW	4.9
WW	68
YW	107
Milk	31
M&G	65
Scr	1.3
Fat	.026
REA	.56
Marb	.07
Wts:	
BW	96
WW	813
YW	1330

*Sale Feature! Excellent February bull with extra performance, good muscling, lots of pigment and a great mother! Dam was high seller in Mohican's 2016 sale. She is high volume, good uddered, attractive and has a 112 WWR! Granddam, 66X, sold for \$62,500 in Wards 2010 sale! He's in the top 5% for WW, YW and M&G. Top 10% for Milk, Scrotal & REA! Owned with Dakitch Hereford Farms, Ada, Mn.*

*Selling 1/2 interest & full possession.*



**Dam of lot 70 ----->**

*Embryos for sale by Heavy Duty, Commitment and Hometown 27A*



# 71 OHR Cooper Dooper 27Y 53E

53E OHRR 2/16/17 Polled 43874409

<b>OHR Cooperstown 47R 37C</b>	NJW 73S W18 Hometown 10Y ET
Sire	FJ Lady Valerie 47R
<b>Haroldsons Madonna 45P 27Y</b>	NJW FHF 9710 Tank 45P
Sire	Haroldsons WLC Madonna ET 8N

EPDs:	
BW	2.8
WW	54
YW	92
Milk	29
M&G	57
Scr	1.0
Fat	.021
REA	.53
Marb	.16
Wts:	
BW	67
WW	629
YW	1147

*Heifer Bull! Long bodied, well muscled, moderate framed bull with a great mother! Dam's production ratios: 98.4 BWR, 104.6 WWR and REA 103.5. She goes back to Tank, Online and Haroldson's great Mira cow! Top 15% for REA, CHB, Carcass Wt and M&G. Breed improver for 14 of 20 traits. Should produce great females!*



**72****OHR Cooper 4B 63E**

63E OHRR

2/20/17

Polled

43874401

**OHR Cooperstown 47R 37C**

NJW 73S W18 Hometown 10Y ET

Sire

FJ Lady Valerie 47R

**Ms Dakitch 37S Polly 4B**

KJ 471T Border 679Z ET

Sire

Ms Dakitch 19H Polly 37S

*Should be a great bull for heifers! Dam raised our top selling heifer In last year's sale to Bill McInnis in Texas for \$4000 on her first calf! She has a 101.5% WWR and her mother is a DOD with a 102.3 WWR. Cooperstown bulls are made right!*

EPDs:	
BW	2.3
WW	51
YW	82
Milk	25
M&G	50
Scr	.8
Fat	.026
REA	.35
Marb	.12
Wts:	
BW	69
WW	627
YW	1043

**73****OHR Sheyenne 68N 72E ET**

72E OHRR

2/24/17

Polled

43874409

**TH 49U 719T Sheyenne 3X**

TH 122 71I Victor 719T

Sire

TH 23S 103R Duchess 49U

**OHR Scarlett 68N ET**

VCR East Kodiak 506E

Sire

Talk Scarlett 338U

*Another great heifer bull! Long bodied, well muscled, moderate sized fully pigmented and structured right! Sire is low birth specialist that traces to the great Burgundy cowfamily. Dam was a power cow with a great udder, high volume and 101.4 WWR. 338U grandmother had a 109.9 WWR!*

EPDs:	
BW	0.6
WW	54
YW	78
Milk	20
M&G	47
Scr	.8
Fat	.026
REA	.31
Marb	.12
Wts:	
BW	76
WW	654
YW	1127

**Lot 73****Dam of lot 73 & 74 ----->****Full Brother ET calves***Reserve Champion female at the 2005**NDWS a couple weeks after having her 1st calf.***68N****74****OHR Sheyenne 68N 73E ET**

73E OHRR

2/25/17

Polled

43874418

**TH 49U 719T Sheyenne 3X**

TH 122 71I Victor 719T

Sire

TH 23S 103R Duchess 49U

**OHR Scarlett 68N ET**

VCR East Kodiak 506E

Sire

Talk Scarlett 338U

*Full brother to the bull above and made alot like him with good length, smooth front end and full pigmentation. This bull was raised by a first calf heifer so the weights are a bit lighter. Maternal sister was top seller our Red Power sale going to Copelands in New Mexico at \$4500! Should also be great for use on heifers and breed high maternal too!*

EPDs:	
BW	0.6
WW	54
YW	78
Milk	20
M&G	47
Scr	.8
Fat	.026
REA	.31
Marb	.12
Wts:	
BW	69
WW	567
YW	1090

**75****OHR Sheyenne 38C 88E**

88E OHRR

3/02/17

Polled

43874397

**TH 49U 719T Sheyenne 3X**

TH 122 71I Victor 719T

Sire

TH 23S 103R Duchess 49U

**OHR Queen Xylia 10Y 38C ET**

NJW 73S W18 Hometown 10Y ET

Sire

HA Queen Xylia M273

*Great bull for heifers! Dark, long sided, correct, conservatively marked smooth made and the 69# birth weight! Sire and both grandsires are high accuracy. Grandmother, M273, is a Dam of Distinction and is a high volume, heavy milking power cow! Very nice weights & EPDs. Top 10% for CED, BW and Marbling!*

**EPDs:**

BW	0.5
WW	56
YW	86
Milk	24
M&G	52
Scr	1.1
Fat	.021
REA	.37
Marb	.25
<u>Wts:</u>	
BW	63
WW	728
YW	1208

**76****OHR Caretaker 152Z 119E**

119E OHRR

3/13/17

Scurred

43874375

**Dakitch MDK Caretaker 51B**

KJ 471Tborder 679Z ET

Sire

KJ HVH 33N Radison 471T ET

**OHR Queen Scarlett 68N 152Z**

HVH Progress 4L 30S

Sire

OHR Scarlett 68N ET

*Complete, correct, well muscled young bull with 100% pigmentation! Dam is a very nice, good uddered, high volume daughter of Progress with a 103.3 WWR! Grandmother has 2 full brothers on the prior Page. This guy is in the top 25% for WW, YW and Udder Suspension. Could work on heifers also.*

**EPDs:**

BW	3.9
WW	58
YW	96
Milk	19
M&G	48
Scr	.7
Fat	.081
REA	.37
Marb	.15
<u>Wts:</u>	
BW	78
WW	633
YW	1083

**77****OHR Caretaker 1117 126E**

126E OHRR

3/18/17

Polled

43874363

**Dakitch MDK Caretaker 51B**

KJ 471Tborder 679Z ET

Sire

KJ HVH 33N Radison 471T ET

**Grassy Run Georgia Girl 1117**

CMF SAH 676M On Target 837S

Sire

GHF GA Girl P606 BEP96 R107

*Another good son of Caretaker that is the youngest bull in the offering. Dam and granddam are both steady producers at 102 & 101.6 WWRs. Granddam pictured below is a daughter of P606 known for producing great females.*

**EPDs:**

BW	4.1
WW	55
YW	93
Milk	21
M&G	49
Scr	.7
Fat	.061
REA	.37
Marb	.06
<u>Wts:</u>	
BW	90
WW	631
YW	1091

**R107 - grandmother of lot 77**



~ Polled Hereford Heifers ~

**78**

**OHR Banner Girl 49B 5E**

5E OHRR      3/26/17      Polled      43874400

<b>Dakitch MDK Caretaker 51B</b>	KJ 471Tborder 679Z ET
Sire	KJ HVH 33N Radison 471T ET
<b>OHR Banner Girl 100W 49B ET</b>	NJW 73S M326 Trust 100W ET
Sire	ANL 60D Banner Girl 1K

EPDs:	
BW	3.9
WW	61
YW	104
Milk	24
M&G	55
Scr	1.2
Fat	.046
REA	.51
Marb	.12
Wts:	
BW	61
WW	546
YW	856

*Attractive, angular, conservatively marked heifer with show potential! Dam is a very good daughter of National Champion, Trust, and out of our powerful donor -1K. 1K sons topped this sale last year at \$7000 and 3 years ago at \$9500. Top 10% or better for YW, CEM, Udder Suspension and Carcass Wt. Top 20% for WW, Sc, REA and CHB!*



**Grandmother of lot 78 -->**



**79**

**OHR Jami 153Z 22E**

22E OHRR      2/03/17      Polled      43874386

<b>OHR Jamestown 87T 53C</b>	NJW 73S W18 Hometown 10Y ET
Sire	OHR Sunny 415E 87T ET
<b>OHR Queen Nikita 40N 153Z</b>	HVH Progress 4L 30S
Sire	OHR Nikita 55H 40N

EPDs:	
BW	2.6
WW	55
YW	86
Milk	24
M&G	51
Scr	1.0
Fat	.026
REA	.55
Marb	.14
Wts:	
BW	74
WW	502
YW	858

*Good Hometown granddaughter with very complete structure, dark color extra pigment. Sire sold to Isane Farms, Badger Mn for \$5000 two years ago - his dam has a 109.6 WWR on her calves! This heifer is a breed improver for 14 of 20 traits and top 10% for REA; top 25% for Teat Size, Udder Suspension and Carcass Wt. Should make a great cow!*



**Grandsire of lot 79 -->**



**80****OHR Queen Elizabeth 143Z 50E**

50E OHRR

2/14/17

Polled

43874369

**Dakitch MDK Caretaker 51B**

KJ 471Tborder 679Z ET

Sire

KJ HVH 33N Radison 471T ET

**OHR Queen Thea 215P 143Z**

HVH Progress 4L 30S

Sire

LCG Dorothea Redwood 215P

*Another very complete, high volume, short marked daughter of our senior herdsire Carataker! Dam is a very nice Progress daughter who's mother has a 104.9 WWR and grandmother is a DOD with a 107.4 WWR. Top 10% for WW, YW and Udder Suspension.*

EPDs:	
BW	3.2
WW	62
YW	99
Milk	20
M&G	51
Scr	.8
Fat	.066
REA	.41
Marb	.09
Wts:	
BW	73
WW	509
YW	872

**Lot 80****81****OHR Victra 09Y 60E**

60E OHRR

2/19/17

Polled

43874359

**FHF 4029 Hickok 15X**

THR Thor 4029

Sire

FHF 10H Victra 31S

**WCC 41W 1P Miss Tank 09Y**

TH 55P 45P Tank 41W

Sire

WPH Stella 1P

*Fancy Thor granddaughter that come from a pedigree loaded with great ones: World Class, Tank, 486S and 19D! Dam is good looking cow with a nice udder that has been a solid producer. Top 10% for Udder Suspension & Teat Size. Top 15% for Scrotal. Should make a good cow.*

EPDs:	
BW	3.8
WW	55
YW	84
Milk	23
M&G	50
Scr	1.2
Fat	.011
REA	.37
Marb	.05
Wts:	
BW	82
WW	434
YW	759

**15X - sire of lot 81****Dam of lot 81 -->****09Y**

**82****OHR Sunny Delight 14B 66E**

66E OHR

2/22/17

Polled

43874371

**Dakitch MDK Caretaker 51B**

KJ 471Tborder 679Z ET

Sire

KJ HVH 33N Radison 471T ET

**OHR Sunny Delight 10Y 14B**

NJW 73S W18 Hometown 10Y ET

Sire

OHR Sunny 415E 87T ET

*Very complete heifer with nice volume, muscle, pigmentation and an attractive look! Powerful granddam (87T) with a 109.6 WWR and great grandmother is a DOD with a 105.8 WWR! Top 10% for YW, Udder Suspension, Teat Size, Carcass Wt and REA. Very good EPDs to go with a very good heifer!*

EPDs:	
BW	2.1
WW	61
YW	101
Milk	24
M&G	54
Scr	1.1
Fat	.061
REA	.57
Marb	.14
Wts:	
BW	54
WW	541
YW	864

**Lot 82****83****OHR Elizabeth 14Z 68E**

68E OHR

2/24/17

Polled

43874373

**Dakitch MDK Caretaker 51B**

KJ 471Tborder 679Z ET

Sire

KJ HVH 33N Radison 471T ET

**OHR Vera 41R 14Z**

SHF Vision R117 U38

Sire

OHR Nikita 88G 41R

*High volume, easy doing, long sided Caretaker daughter from a cow family with great udder quality and productivity! Dam is very nice, big ribbed, good uddered Ribeye granddaughter with a 104.3 WWR. Grandmother pictured below is one of our all-time favorite Kodiak daughters! Top 15% or better for WW, YW and CEM.*

EPDs:	
BW	3.4
WW	60
YW	99
Milk	23
M&G	53
Scr	1.0
Fat	.066
REA	.45
Marb	.08
Wts:	
BW	84
WW	546
YW	977

**Lot 83****Dam of lot 83 -->****41R**

**84****OHR Banner Girl 117B 71E**

71E OHR

2/24/17

Polled

43874364

**Dakitch MDK Caretaker 51B**

KJ 471Tborder 679Z ET

Sire

KJ HVH 33N Radison 471T ET

**OHR Banner Girl 24X 117B**

OHR Redeye 51R 24X

Sire

ANL 60D Banner Girl 1K

*Another big ribbed, correct, short marked Caretaker heifer! This one goes back to the Banner Girl family and a direct daughter of the great cow that started it all for us. Dam has 105 WWR and goes back to some of our favorite females on the sire side! Top 11% for WW and top 7% for YW.*

EPDs:	
BW	4.3
WW	61
YW	102
Milk	20
M&G	50
Scr	1.0
Fat	.056
REA	.42
Marb	.06
Wts:	
BW	76
WW	578
YW	908

**Lot 84****85****OHR Sheyenne 17W 77E**

77E OHR

2/26/17

Polled

43874391

**TH 49U 719T Sheyenne 3X**

TH 122 71I Victor 719T

Sire

TH 23S 103R Duchess 49U

**ANL R 32P Mindy 17W**

Circle-D 22H Pacman 32P

Sire

ANL R 36N Mindy 30S

*Long bodied, higher volume, darker colored, red eyed direct daughter of the homozygous polled Select Sires bull, Sheyenne. Dam has been a good producer for us with a 102 WWR. She traces on the dam side to Beyond - Agribition Supreme Champion Bull. Top 20% for BW and top 25% for Marbling.*

EPDs:	
BW	1.5
WW	54
YW	81
Milk	22
M&G	49
Scr	.8
Fat	.021
REA	.30
Marb	.17
Wts:	
BW	68
WW	539
YW	862

**Lot 85**



**86****OHR Banner Girl 37B 97E**

97E OHR

3/06/17

Polled

43874396

**Dakitch MDK Caretaker 51B**

KJ 471Tborder 679Z ET

Sire

KJ HVH 33N Radison 471T ET

**OHR Banner Girl 100W 37B ET**

NJW 73S M326 Trust 100W ET

Sire

ANL 60D Banner Girl 1K

*Moderate framed, fault free, dark colored, short marked March heifer! with the power of Banner Girl and National Champion Bull -Trust, this heifer should breed some performance. On paper she's a breed improver for 15 of 20 traits and in the top 10% for YW, CEM, REA, Carcass Wt and CHB. Top 15% for WW and Scrotal.*

**EPDs:**

BW	4.1
WW	60
YW	102
Milk	24
M&G	54
Scr	1.2
Fat	.036
REA	.56
Marb	.11
<u>Wts:</u>	
BW	67
WW	509
YW	772

**87****OHR Shy Girl 96C 109E**

109E OHR

3/09/17

Polled

43874408

**TH 49U 719T Sheyenne 3X**

TH 122 71I Victor 719T

Sire

TH 23S 103R Duchess 49U

**OHR Georgie Girl 10Y 96C**

NJW 73S W18 Hometown 10Y ET

Sire

OHR Nikita 88G 41R

*Fancy daughter of Sheyenne with Hometown and the beautiful 41R on the dam side. Dam is very nice first calf heifer with tight udder and small teats. She's a breed improver for 18 of 20 traits! Top 10% for CED and BW. Top 15% for WW and Scrotal. Top 20% for M&G. We like the Sheyenne daughters in production - this one should be great!*

**EPDs:**

BW	0.6
WW	60
YW	91
Milk	26
M&G	56
Scr	1.2
Fat	.031
REA	.40
Marb	.15
<u>Wts:</u>	
BW	74
WW	549
YW	895

**Sire of Lot 87****Grandmother of lot 87 -->****41R**

**Steve Wolff**  
**Wolff Cattle Services**  
**701-710-1574**

*Steve lives and breathes Herefords and sees about as many as anyone! He is on staff to serve you and help answer any questions.*

**88****OHR Lizzy 16T 140E**

140E OHRR

3/28/17

Polled

43874411

**Dakitch MDK Caretaker 51B**

KJ 471Tborder 679Z ET

Sire

KJ HVH 33N Radison 471T ET

**C&L DCC Catalina 71I 16T**

DRF JWR Prince Victor 71I

Sire

Remitall Catalina ET 150L

EPDs:

BW	3.9
WW	58
YW	97
Milk	23
M&G	52
Scr	.9
Fat	.051
REA	.47
Marb	.09
<u>Wts:</u>	
BW	73
WW	540
YW	899

*Fancy, pigmented, correct and has some rib - that's what you'd expect from a Caretaker! Mother is a DOD that has raised 8 calves at 103.4 WWR. She traces back to Governor and Online's mother. Top 25% or better for WW, YW, Carcass Wt and CHB. Lots of milk and good udders in this pedigree. She should be a great cow!*

**Lot 88****Grandmother of lot 88 -->****16T****89****OHR Georgie Girl 25A 148E**

148E OHRR

4/08/17

Polled

43874392

**Dakitch MDK Caretaker 51B**

KJ 471T Border 679Z ET

Sire

KJ HVH 33N Radison 471T ET

**OHR Georgie Girl 86U 25A**

RJH Momentum H45

Sire

OHR Revlon 41R 86U

EPDs:

BW	3.6
WW	63
YW	99
Milk	23
M&G	55
Scr	1.1
Fat	.046
REA	.60
Marb	-.04
<u>Wts:</u>	
BW	65
WW	558
YW	892

*Excellent April heifer with lots of body, correct structure, dark color and good thickness. Dam is really good young cow with a nice udder, extra length, plenty of volume and 109.5 WWR on her calves! Grandmother pictured is a DOD with 113.4 WWR. Top 10% or better for WW, YW, CEM, Carcass Wt and REA. Another show prospect here!*

**Lot 89****Grandmother of lot 89 -->****86U**

# ~ Polled Hereford Bred Cows ~

<b>90 OHR Shy Ann 10M 42C</b>			
42C OHR	2/07/15	43649966	
TH 49U 719T Sheyenne 3X	TH 122 71I Victore 719T		
Sire	TH 23S 103R Duchess 49U		
OHR Mattie 91F 10M (DOD)	VCR East Kodiak 506E		
Dam	TA-Bar-E-L 740C Reba 91F		
<i>Exposed to OHR Homestretch 1K 9D ET on 4/20/17 to 6/11/17.                      Then to Dakitch MDK Caretaker 51B from 6/11/17 to 7/23/17.                      Checked 75 days pregnant on 9/11/17. 118 WWR on her first calf!</i>			
			<b>EPDs:</b> BW 1.0 WW 49 YW 77 Milk 22 M&G 47 Sc. 1.0 REA .22 Marb .16

<b>91 OHR Gloria 14Z 42B</b>			
42B OHR	2/11/14	43534940	
RJH Momentum H45	3D No Limit 09E		
Sire	JR Y168 Gloria C104		
OHR Vera 41R 14Z	SHF Vision R117 U38		
Dam	OHR Nikita 88G 41R		
<i>Exposed to Dakitch MDK Caretaker 51B from 5/25/17 to 7/23/17.                      Checked 45 days pregnant on 8/22/17. 102 WWR. GDam WWR 104.3.</i>			
			<b>EPDs:</b> BW 2.6 WW 65 YW 96 Milk 25 M&G 58 Sc. 1.3 REA .80 Marb .02

<b>92 OHR Queen Mattie 10M 110B</b>			
110B OHR	3/08/14	43534875	
HVH Progress 4L 30S	SHF Progress P20		
Sire	HVH Genetic Queen 53H 4L		
OHR Mattie 91F 10M (DOD)	VCR East Kodiak 506E		
Dam	TA-Bar-E-L 740C Reba 91F		
<i>Exposed to OHR Homestretch 1K 9D ET from 4/20/17 to 6/11/17.                      Then to Dakitch MDK Caretaker 51B from 6/11/17 to 7/23/17.                      Checked 60 days pregnant on 9/11/17. 107 WWR! Dam 104.8 WWR!</i>			
			<b>EPDs:</b> BW 5.2 WW 42 YW 69 Milk 23 M&G 44 Sc. .7 REA .11 Marb .12

<b>93 OHR Banner Girl 24X 117B</b>			
117B OHR	3/10/14	43534993	
OHR Redeye 51R 24X	SHF Rib Eye M326 R117		
Sire	OHR Nikita 16G 51R		
ANL 60D Banner Girl 1K	RU Duster 60D		
Dam	SVR 75A Banner Girl 545G		
<i>Exposed to Dakitch MDK Caretaker 51B from 5/25/17 to 7/23/17.                      Checked 60 days pregnant on 9/11/17. 105 WWR. 1K daughter!</i>			
			<b>EPDs:</b> BW 4.9 WW 56 YW 95 Milk 22 M&G 50 Sc. 1.2 REA .35 Marb .04

<b>94 OHR Gloria 153Z 153B</b>			
153B OHR	10/15/14	43649925	
OHR DKM 432X Mr Attraction 1205	Topp 432X ET		
Sire	DKM Miss Seeker 908		
OHR Queen Nikita 40N 153Z	HVH Progress 4L 30S		
Dam	OHR Nikita 55H 40N		
<i>Exposed to Dakitch MDK Caretaker 51B from 5/25/17 to 7/23/17.                      Checked 3.5 months pregnant on 9/11/17.</i>			
			<b>EPDs:</b> BW 3.9 WW 56 YW 86 Milk 21 M&G 49 Sc. .8 REA .41 Marb .04

**95****OHR Country Girl 51R 147A**

147A OHRR

10/20/13

43534556

**HVH Progress 4L 30S**

SHF Progress P20

Sire

HVH Genetic Queen 53H 4L

**OHR Nikita 16G 51R**

VCR East Kodiak 506E

Dam

OHR Questiva 16G

*Aled to NJW 135U 10Y Hometown 27A on May, 26, 2017.**Then to Dakitch MDK Caretaker 51B from 6/03/17 to 7/23/17.**Checked 60 days pregnant on 9/11/17. Granddam 105.6 WWR!***EPDs:**

BW	3.5
WW	53
YW	89
Milk	18
M&G	45
Sc.	.6
REA	.31
Marb	.08

**96****OHR Queen of Diamonds 142Z**

142Z OHRR

10/05/12

43440731

**HVH Progress 4L 30S**

SHF Progress P20

Sire

HVH Genetic Queen 53H 4L

**BNC 4L Diamond LIL 110N**

FCC 60G Maddox 4L

Dam

Black-Diamond Gleamer 209J

*Exposed to Dakitch MDK Caretaker 51B from 5/07/17 to 7/23/17.**Checked 50 days pregnant on 9/11/17. 118 WWR. GDam WWR 103.7.***EPDs:**

BW	3.5
WW	50
YW	82
Milk	22
M&G	46
Sc.	.7
REA	.17
Marb	.03

**97****OHR Queen Scarlett 68N 152Z**

152Z OHRR

11/02/12

43440736

**HVH Progress 4L 30S**

SHF Progress P20

Sire

HVH Genetic Queen 53H 4L

**OHR Scarlett 68N ET**

VCR East Kodiak 506E

Dam

Talk Scarlett 338U

*Exposed to Dakitch MDK Caretaker 51B from 5/25/17 to 7/23/17.**Checked 75 days pregnant on 9/11/17. 103 WWR! Dam 101.4 WWR!***EPDs:**

BW	4.1
WW	52
YW	83
Milk	20
M&G	46
Sc.	.5
REA	.25
Marb	.21

**98****WCC 41W 1P Miss Tank 09Y**

09Y OHRR

3/10/14

43534993

**TH 55P 45P Tank 41W**

MJW FHF 9710 Tank 45P

Sire

TH 6M 19D Loretta 6M

**WPH Stella 1P**

GK 327L Vindicator 486S

Dam

KFF Spirit Queen 322M

*Exposed to Dakitch MDK Caretaker 51B from 6/08/17 to 7/23/17.**Checked 45 days pregnant on 8/22/17. Heifer calf sells also!***EPDs:**

BW	3.5
WW	49
YW	82
Milk	19
M&G	43
Sc.	.7
REA	.29
Marb	-.01

**99****OHR Vera 41R 14Z**

14Z OHRR

2/12/12

43288648

**SHF Vision R117 U38**

SHF Rib Eye M326 R117

Sire

SHF Miss Progress S03 ET

**OHR Nikita 88G 41R**

VCR East Kodiak 506E

Dam

Salunga Georgie Girl

*Aled to NJW 135U 10Y Hometown 27A on May, 11, 2017.**Exposed to Dakitch MDK Caretaker 51B from 5/25/17 to 7/23/17.**Checked 2.5 months pregnant on 8/22/17. 104.3 WWR. Gdam 102.***EPDs:**

BW	3.2
WW	55
YW	89
Milk	27
M&G	55
Sc.	1.0
REA	.42
Marb	.08



~ Commercial Heifers ~

<b>100</b>	<b>OHRR 46E</b>
46E OHRR	2/11/17 50% Hereford, 50% Red Angus
<i>Red white faced heifer sired by unknown Hereford bull. Dam is 214S registered Red Angus #1130349 - by 4L Advantage R9N.</i>	
<u>Wts:</u>	
BW 74	
WW 576	
YW 915	

<b>101</b>	<b>OHRR 48E</b>
48E OHRR	2/13/17 50% Hereford, 50% Red Angus
<i>Red white faced heifer sired by unknown Hereford bull. Dam is 59Y registered Red Angus #1466595 - by OHRR Dakota Landmark 5T.</i>	
<u>Wts:</u>	
BW 90	
WW 571	
YW 926	

<b>102</b>	<b>OHRR 110E</b>
110E OHRR	3/10/17 100% Red Angus
<i>Solid red heifer sired by L83 Hobo 106 and dam 3S who we cannot find a sire for by DNA. This heifer should be purebred red angus.</i>	
<u>Wts:</u>	
BW 82	
WW 444	
YW 843	

<b>103</b>	<b>OHRR 111E</b>
111E OHRR	3/10/17 50% Red Angus
<i>Solid Black heifer sired by L83 Hobo 106 and a solid black commercial cow tag 350. 350 has been used as a recipient but didn't take her egg.</i>	
<u>Wts:</u>	
BW 82	
WW 645	
YW 987	

<b>104</b>	<b>OHRR 117E</b>
117E OHRR	3/12/17 50% Red Angus
<i>Solid Black heifer sired by L83 Hobo 106 and a solid black commercial cow tag 419. 419 has been used as a recipient but didn't take her egg.</i>	
<u>Wts:</u>	
BW 76	
WW 529	
YW 852	

<b>105</b>	<b>OHRR 141E</b>
141E OHRR	3/29/17 50% Red Angus
<i>Solid Red heifer sired by L83 Hobo 106 and red white face commercial cow tag 7984. 7984 has been used as a recipient but work to put egg in.</i>	
<u>Wts:</u>	
BW 70	
WW 601	
YW 970	

Videos of the sale offering  
will be posted on our website:  
[www.olsonredpower.com](http://www.olsonredpower.com)

*We have been using VitaFerm products in our herd for many years. It helps with the fertility and efficiency of our herd.*



# Red Power Bull Sale

16068 24th St SE

Argusville, ND 58005

Return Service Requested



*The Region's Red Angus  
& Polled Hereford  
Performance Leader!*

