

Olson's Red Power

Performance Bull & Female Sale

At the Ranch ~ Argusville, ND ~ Noon Lunch ~ 1:00 Sale

♣ **Thursday** ♣
February 20, 2014



34A - HOBO X LANDMARK



61A - TRUST X ADVANCE



136Z - LANDMARK X RED CANYON



148Z - LANDMARK X DAKOTA COPPER



49A - LANDMARK X HI HO



37A - GAME PLAN X T3 CHIEF

109 Lots Selling

44 ~ Red Angus Bulls

15 ~ Red Angus Heifers

20 ~ Hereford Bulls

9 ~ Hereford Heifers

10 ~ Bred Red Angus Females

11 ~ Bred Hereford Heifers

General Information

Sale Time: 1:00 CST, Thursday, February 20, 2014. Complimentary noon lunch.

Location: At the ranch. From Argusville on I-29: 7 West on Cass #4, 1 North & 1/2 West. From Casselton @ I-94: 10 North on State Hwy 18, 5 East on Cass #4, 1 North & 1/2 East.

Motels: Holiday Inn, on Interstate 29 in Fargo [20 minutes to ranch] 701.282.2700.

Governors Inn, on Interstate 94 at Casselton [20 minutes to ranch] 888.847.4524. Fargo has many nationwide hotels 20 minutes from OHR.

Airline Service: United serves Fargo's Hector International Airport.

Delivery: Free delivery to central points up to 300 miles and further distances at cost. Take your bull home sale day and get \$50 off.

Free Wintering: We keep your bull until April 1st. We recommend insurance for those animals not leaving on sale day.

Guarantee: All cattle are fully guaranteed according to the standards set by the American Red Angus and American Hereford Associations. 2012 born bulls have been fertility tested. We will test yearlings prior to delivery on 4/1. We recommend you test yearlings taken home on sale day.

Terms: Terms of the sale are cash or check. Settlement must be made immediately following the sale before animals can be loaded or delivered. Every animal sells to the highest bidder. Any correction from the auction block takes priority over printed material in the catalog. We will be retaining a semen interest in some of the bulls selling.

Liability: All attending the sale do so at their own risk. OHR assumes no responsibility for accident or injury.

EPD's: All EPD's are current as of January 20, 2014. As yearling weights, carcass ultrasound and scrotal measurements are taken the EPD's may change some by sale day. Registration numbers are provided so you can research animals further at breed websites: www.redangus.org or www.hereford.org.

Cattle on Display: All sale cattle are at the ranch and we will invite you to stop prior to the sale to look them over and visit with us. Many of the mothers and sires will be nearby also. Sale cattle will be available for viewing in their display pens. They will not enter a sale ring. This will be a video sale.

Herd Health: All bulls will be tested for BVD. Our herd is Johnes Free. All sale cattle were vaccinated and boosted this fall with Bovi Shield 5 and Ultra One Shot 7 and treated again with Ivermectin pour on in December. Vet work by Dr. Peterson and Casselton Vet Service - 800-216-9985.

Supplement Sheet: More information will be available upon request one week prior to the sale and available sale day, including: Ribeye, back fat, marbling, pelvic area and scrotal measurements. Current EPD's and weights are provided in the catalog. We hope to provide you with the most accurate information possible so when you see the cattle you can make the best selection for your program.

Mail and Phone Bids: Bidders unable to make the sale may contact the Olsons or a staff member to assist in the bidding process. Cell phone numbers listed below.

Sale Staff - Cell Phones

Kyle Gilchrist, Auctioneer..... 641.919.1077
 Kris Peterson, Cattle Business Weekly 701.339.0305
 Levi Landers, AHA..... 308.730.1396
 Justin Dikoff, DV Auctions 605.290.0635
 Steve Wolff, Wolff Cattle Services 701.710.1574
 Kirby Goettsh, Farm & Ranch Guide..... 605.380.3939
 Clint Berry, Superior Livestock..... 417.844.1009

DVAuction
 Broadcasting Real-Time Auctions

View the Auction Live!

Bid Online . . . you're ringside right at your desk!

Buying online is as easy as 1, 2, 3...

1. Create an account at www.dvauction.com under the "register" tab.
2. Apply for bidding approval by clicking on the "details" tab at least 24 hours prior to the auction. A DV representative will notify you once you have been approved.
3. Tune in for the sale and make your purchases!

High speed internet is required for successful bidding. Be sure to check the lag-time monitor in the top left corner to ensure real-time broadcasts.

Proxy Bidding: If you can't make time to watch the sale, register a proxy bid and let our system represent your bid while you're away. Look for the "proxy bid" tab on the auction listing, and fill in your maximum bids. We'll handle the rest!

Having Troubles? During the auction, you can type a message to the operator at any time for assistance. Our full-time support team can also always be reached at (402) 474-5557.

DVA Rep. Justin Dikoff (605) 290-0635
 email: jdikoff@dvauction.com

Please contact me with questions about the sale or to view the cattle for you.

Cattlemen,

Welcome to our Red Power Performance Tested Bull & Female Sale! This year we have a bonus offering of 10 Red Angus bred cows and 10 Polled Hereford bred cows. We simply have more cows than we have room for. Thus we are offering this productive, young group of bred females as a special feature for this year.

Again we have a great group of powerful bulls and some really good heifers to choose from. Watch for our videos online in early February at: www.olsonredpower.com or contact us for a DVD.

Our family has been in the registered cattle business since 1936 and we are committed to providing you great Red Angus & Herefords that are productive, problem free and developed to last. Contact us if you have any questions.

Sincerely,
 The Olsons



Edward and Jeanne →



Carl and Lindsay
 Casey - 10 years
 Dru - 22 months
 Stetson - 7 months

Sale Day Phone ~ 701-484-5779

The Olson Family Phones

Edward..... 701.238.3601
 Carl 701.361.0684
 Jeanne 701.866.5779
 Lindsay 701.388.5801
 Craig 701.367.6704
 Caryn..... 701.367.4434

RED OHR ANGUS *Polled Herefords*

Ed & Jeanne Olson - Carl & Lindsay Olson
 16068 24th St SE - Argusville, ND 58005
 Email: olsoncandc@aol.com

Phone/fax 701-484-5779
 Ed's cell 701-238-3601
 Carl's cell 701-361-0684

www.olsonredpower.com

Breeding High Quality Registered Cattle Since 1936!

Red Angus Yearling Bulls

1 OHRR 59Y COPPER HOBO 2A

OHRR 2A	1/11/13	100% 1A	1651076	BW	-1.3
L83 HOBO 106	BUF CRK HOBO 1961			WW	54
SIRE	L83 MISS MULBERRY 913			YW	86
OHRR 47L COPPER LANA 59Y	OHRR DAKOTA LANDMARK 5T			MILK	15
DAM	OHRR COPPER FIREFLY 47L			TM	42
Outstanding effort by super first calver 59Y ~ a GD of Copper Rob 1204D. Hobo 106 is a son of Hobo 1961 one of the great sires in the Red Angus breed. MPPA: 102. Calving ease. Dark and good!					
				MARB	.52
				REA	-.15
				FAT	-.02
				BW	68
				WW	683
				YW	1262



LOT 1

2 OHRR 46Y GAME PLAN 5A

OHRR 5A	1/15/13	100% 2	1651068	BW	.4
PIE GAME PLAN 0618	VGW GAME PLAN 508			WW	57
SIRE	PIE PRIME CANYON 927			YW	92
OHRR 99W-228 FOXXY ANNA 46Y	JECA U228			MILK	23
DAM	OHRR FOXXY ANNA 22L-99W			TM	51
Very complete, well muscled bull from a first calf heifer. Balanced EPD's also.					
				MARB	.40
				REA	.15
				FAT	-.02
				BW	70
				WW	643
				YW	1131

3 OHRR 13A

OHRR 13A	1/27/13	NA	NA	BW	NA
VGW TREMOR 112	BUF CRK RIGHT KIND V199			WW	NA
SIRE	VGN 896-QUEEN 0939			YW	NA
OHRR 80X	RED ANGUS - UNKNOWN			MILK	NA
DAM	RED ANGUS - UNKNOWN			TM	NA
13A is a very good son of Tremor, our pick from the 2012 Westphal Red Angus Sale. We are unable to prove parentage on dam as the calf is not registered. 80X is an excellent, high percentage, solid red 3-year-old.					
				MARB	NA
				REA	NA
				FAT	NA
				BW	67
				WW	571
				YW	1044

2014 Spring Red Angus Breed EPD averages - (Non Parent)

BW	WW	YW	Milk	TM	Stay	Marb	REA	Fat
-1.0	56	83	20	48	11	.43	.15	0

4 OHRR 23Y-39X GOLD TRUST 15A

OHRR 15A	1/28/13	100% 1A	1651053	BW	-1.3
OHRR 58R GOLD TRUST 39X	RED GLOBAL TRUST 21T			WW	53
SIRE	OHRR 63K SUMMER GOLD 58R			YW	85
OHRR 32T-113 ANNABELLE 23Y	OHRR 107J LANDSLIDE 113R			MILK	20
DAM	OHRR 112H CANYON KURABA 32T			TM	47
Superior performance by a 2-year-old out of a stellar OHRR cow family, the Annabelle's and Kuraba's ~ some of our greatest cows. Note weights and EPD's!					
				MARB	.38
				REA	.05
				FAT	.01
				BW	69
				WW	675
				YW	1205

5 OHRR 92W GOLD TRUST 21A

OHRR 21A	2/4/13	100% 1A	1651097	BW	0.0
OHRR 58R GOLD TRUST 39X	RED GLOBAL TRUST 21T			WW	52
SIRE	OHRR 63K SUMMER GOLD 58R			YW	82
OHRR ANNA SHAREE 60P-92W	OHRR 107J LANDSLIDE 113R			MILK	20
DAM	OHRR 2M META SHAREE 60P			TM	46
Gold Trust son with a powerful maternal pedigree: Sharee and Annabelle ~ a solid, proven heritage on this one!					
				MARB	.38
				REA	-.07
				FAT	-.03
				BW	85
				WW	634
				YW	1146



LOT 5

6 OHRR 9S COPR TRUST 23A

OHRR 23A	2/8/13	100% 1A	1651037	BW	7.9
RED GLOBAL TRUST 21T	LCC ABOVE & BEYOND 1300J			WW	75
SIRE	RED GLOBAL'S LAKINA 87R			YW	110
OHRR 36P COPPER CLASSY 9S	OHRR 99L COPPER HI HO 108N			MILK	120
DAM	OHRR 25K PRAIRIE DIVA 36P			TM	-57
Not sure why this BW was so high ~ sire is -1.6 63 106 53 and dam: 1.2 67 .98 18 52.					
				MARB	.19
				REA	.17
				FAT	.02
				BW	124
				WW	600
				YW	1290

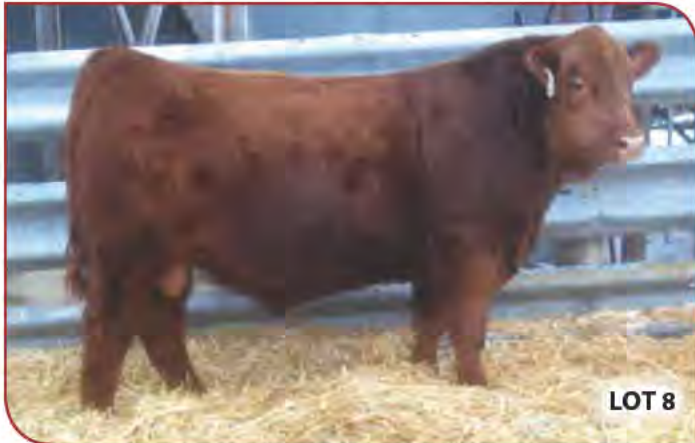
Dam is a great individual and has produced some of our best bulls and females.

7 OHRR 0624-RED VIC 24A

OHRR 24A	2/8/13	100% 1A	1651101	BW	-4.1
VGW TREMOR 112	BUF CRK THE RIGHT KIND U199			WW	50
SIRE	VGW 896-QUEEN 0939			YW	96
JLRA RED STAR 24S	CBR RAM 3109-936			MILK	16
DAM	BIEBER DAPHNE 6067			TM	41
This guy lost his mom very early but did well on the foster dam. Dam 0624 raised a great bull two years ago ~ sold here at \$5,750. Calving ease sire.					
				MARB	.29
				REA	.06
				FAT	.05
				BW	67
				WW	550
				YW	1008

8 OHRR 99W GOLD TRUST 29A

OHRR 29A	2/11/13	100% 1A	1651099	BW	-.07
OHRR 58R GOLD TRUST 39X	RED GLOBAL TRUST 21T			WW	52
SIRE	OHRR 63K SUMMER GOLD 58R			YW	84
OHRR FOXXY ANNA 22L-99W	OHRR 107J LANDSLIDE 113R			MILK	20
DAM	OHRR FOXXY ROXY 22L			TM	46
Another wow female pedigree: Annabell: 106 MPPA; Roxy 22L: 106 MPPA and Foxy 18B: 110 MPPA. Keep your heifers from this bull!					
				MARB	.34
				REA	.09
				FAT	.01
				BW	79
				WW	631
				YW	1191



LOT 8

9 OHRR 90W-GAME PLAN 32A

OHRR 32A	2/11/13	100% 1A	1651096	BW	0.7
PIE GAME PLAN 0618	VGW GAME PLAN 508			WW	70
SIRE	PIE PRIME CANYON 927			YW	111
OHRR MACS CANDY 28R-90W	WR MR. RED DAWG 5335			MILK	16
DAM	OHRR 74S MACKS TANA 28R			TM	50
Sire is son of Game Plan 508 ~ his dam has MPPA of 111. Dam's side goes back to our premier herd sire McIntosh 344 and Thunderheart 745 cow ~ also Red Dawg (20 ⁺ ribeye)!					
				MARB	.36
				REA	.21
				FAT	.01
				BW	79
				WW	633
				YW	1166

10 OHRR DAKOTA HOBO 34A

OHRR 34A	2/12/13	100% 1A	1652065	BW	-1.4
L83 HOBO 106	BUF CRK HOBO 1961			WW	55
SIRE	L83 MISS MULBERRY 913			YW	87
OHRR 29S COPPER LANA 17Y	OHRR DAKOTA LANDMARK 5T			MILK	15
DAM	OHRR 446 COPPERGLASS 67G-29S			TM	44
One of top herd bull prospects of 2013. Dam 17Y is top notch in every way: moderate, thick, feminine, and good uddered. GD 29S is a ranch favorite. We think the Hobo calves are exciting. Good one here!					
				MARB	.58
				REA	-.09
				FAT	.02
				BW	74
				WW	754
				YW	1390



LOT 10

11 OHRR 97S-DAK TRUST 41A

OHRR 41A	2/13/13	100% 1A	1651098	BW	6.5
RED GLOBAL TRUST 21T	LCC ABOVE & BEYOND 1300J			WW	69
SIRE	RED GLOBAL'S LAKINA 87R			YW	104
OHRR 15F SCARLET DIVA 97S	LCC DIVIDE 1435K			MILK	21
DAM	OHRR MS 925 SCARLET 15F			TM	55
Trust out of our only Divide female ~ she's a good one out of the original Scarlet 15F cow ~ dam of our popular 10H cow. Check parental EPD's on birth sire: 0-1.6, dam: 1.1					
				MARB	.30
				REA	.07
				FAT	.03
				BW	116
				WW	653
				YW	1144



LOT 11

15F ~ GRANDDAM OF LOT 11



12 OHRR 39R-5T LANDMARK 42A

OHRR 42A	2/14/13	100% 1A	1651062	BW	6.0
				WW	76
OHRR DAKOTA LANDMARK 5T	COLEY'S ADVANCE 5108			YW	108
SIRE	OHRR 1098 CLASSY 48L			MILK	11
				TM	49
OHRR 5E DAKOTA CLASSY 39R	OHRR DAKOTA COPPER 29K			MARB	.57
DAM	OHRR MS CLASSY 5E			REA	.04
				FAT	-.01
Great performance here ~ McIntosh 344, Rampage, Copper Rob, Dakota Copper. Once again, BW EPD doesn't reflect parental EPD's at 0.4 and 2.2.				BW	106
				WW	720
				YW	1312

13 OHRR 10Y-GP COPPER TRUST 44A

OHRR 44A	2/14/13	100% 1A	1651040	BW	-3.2
				WW	51
PIE GAME PLAN 0618	VGW GAME PLAN 508			YW	82
SIRE	PIE PRIME CANYON 927			MILK	24
				TM	49
OHRR 141T COPPER TRISTA 10Y	RED GLOBAL TRUST 21T			MARB	.43
DAM	OHRR COPPER SHAREE 2M-141T			REA	-.01
				FAT	.00
Out of a Trust 2-year-old ~ Granddam has 105 MPPA. Everything good in this pedigree. Beautiful EPD's ~ would work well for heifers.				BW	67
				WW	574
				YW	1110



LOT 13

14 OHRR 20U LANDMARK 45A

OHRR 45A	2/14/13	100% 1A	1651049	BW	-0.3
				WW	64
OHRR DAKOTA LANDMARK 5T	COLEY'S ADVANCE 5108			YW	99
SIRE	OHRR 1098 CLASSY 48L			MILK	16
				TM	48
OHRR 40P MAHOGANY LASS 20U	UBAR HIGH CAPACITY 224			MARB	.57
DAM	OHRR 14M MAHOGNY LASS 40P			REA	.22
				FAT	.02
Twin to another bull that weighed 50 lbs and didn't make the sale. 20U has lots of milk and great udder quality like the rest of the Mahogany line that she comes from. This bull was raised as a twin so his weights will be lower than normal. Like most bulls in the sale, he would work very well on heifers!				BW	57
				WW	556
				YW	991

15 OHRR 21T LANDMARK 49A

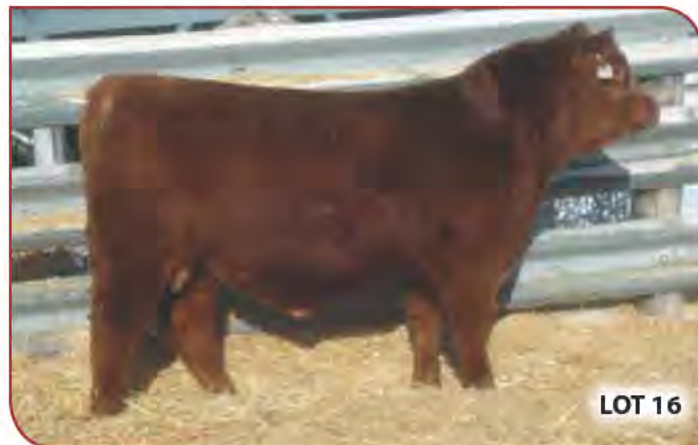
OHRR 49A	2/17/13	100% 1A	1651051	BW	1.1
				WW	66
OHRR DAKOTA LANDMARK 5T	COLEY'S ADVANCE 5108			YW	100
SIRE	OHRR 1098 CLASSY 48L			MILK	19
				TM	52
LMF THEA 21T	OHRR 99L COPPER HI HO 108N			MARB	.56
DAM	OHRR 50M SEMONA 104P			REA	.29
				FAT	.02
Dam is one of our best dams. She has raised two daughters that sold for \$8,000 and \$4,800 and 2 sons at \$5,000. She is phenotypically perfect with a perfect udder. MPPA: 107. Sire, 5T, is a great individual.				BW	85
				WW	745
				YW	1250



LOT 15

16 OHRR X803-GAME PLAN 55A

OHRR 55A	2/22/13	100% 1A	1651120	BW	-0.8
				WW	58
PIE GAME PLAN 0618	VGW GAME PLAN 508			YW	96
SIRE	PIE PRIME CANYON 927			MILK	22
				TM	51
KFRA MISS MOJITO X803	COLEY'S MOJITO 503R			MARB	.44
DAM	KFRA MISS G CANYON 4803			REA	.02
				FAT	.00
A very good bull who's dam raised one of our high sellers last year on her first calf! If you are a believer in the power of a good cow then consider this stout Game Plan son. Will also work on heifers.				BW	76
				WW	679
				YW	1162



LOT 16

17 OHRR 220S TRUST 61A

OHRR 61A	2/25/13	100% 1A	1651118	BW	0.6
				WW	85
RED GLOBAL TRUST 21T	LCC ABOVE & BEYOND 1300J			YW	104
SIRE	RED GLOBAL'S LAKINA 87R			MILK	24
				TM	56
OHRR 107J ADVANNA 220S	4L ADVANTAGE R9N			MARB	.16
DAM	SHHM ANNABELLE 107J			REA	.10
We love this cow: She's an ET out of 107J (MPPA: 106) and R9N. She is a moderate, dark red, good uddered cow that sits at the top of the herd every year. MPPA: 104. Great everything here! Trust sons are the best!					
				FAT	-.01
				BW	86
				WW	727
				YW	1276



LOT 17

18 OHRR 53T GOLD TRUST 62A

OHRR 62A	2/25/13	100% 1A	1651073	BW	-0.4
				WW	56
OHRR 58R GOLD TRUST 39X	RED GLOBAL TRUST 21T			YW	91
SIRE	OHRR 63K SUMMER GOLD 58R			MILK	16
				TM	44
OHRR 18B FOXXY VANNA 53T	4L ADVANTAGE R9N			MARB	.44
DAM	ROBERTS PR-FOXXY 18B			REA	.06
Gold Trust out of ET dam. Granddam is our highest MPPA cow at 110.					
				FAT	.01
				BW	80
				WW	656
				YW	1136

19 OHRR 62U LANDMARK 63A

OHRR 63A	2/26/13	100% 1A	1651079	BW	-3.0
				WW	53
OHRR DAKOTA LANDMARK 5T	COLEY'S ADVANCE 5108			YW	85
SIRE	OHRR 1098 CLASSY 48L			MILK	14
				TM	40
OHRR MS RED CLASSY 47N-62U	WR MR. RED DAWG 5335			MARB	.54
DAM	OHRR SE COPPER MACK 47N			REA	.12
Excellent dam (MPPA: 105) goes back to Dakota Copper. Sire, Landmark 5T, is a very complete bull whose offspring are outstanding with high carcass quality.					
				FAT	.00
				BW	69
				WW	613
				YW	1125

20 OHRR 207-VC BARON 64A

OHRR 64A	2/26/13	100% 1A	1651047	BW	-5.0
				WW	52
VGW TREMOR 112	BUF CRK THE RIGHT KIND U199			YW	90
SIRE	VGW 896-QUEEN 0939			MILK	17
				TM	43
PFFR MS BARONESS 207	BADLANDS CUT ABOVE 012			MARB	.32
DAM	PFFR BARONESS 861			REA	.04
Sire VGW 112, an outstanding son of Right Kind U199, with strong balanced EPD's, and excellent thickness. Great EPD's! Suitable for heifers.					
				FAT	.01
				BW	59
				WW	601
				YW	1120

21 OHRR 69U-LAKOTA TRUST 66A

OHRR 66A	2/27/13	100% 1A	1651082	BW	-1.1
				WW	53
RED GLOBAL TRUST 21T	LCC ABOVE & BEYOND 1300J			YW	89
SIRE	RED GLOBAL'S LAKINA 87R			MILK	27
				TM	53
OHRR MS GRANDE LAKOTA 69U	LCHMN GRANDCANYON 1244G			MARB	.26
DAM	TBS MS LAKOTA 602			REA	.10
Great heifer bull who's dam is by the great female producer, Grand Canyon. Trust sons and daughters are both performing very well. Tested free for OS.					
				FAT	-.01
				BW	80
				WW	650
				YW	1101

22 OHRR 28R MACKS VIC 67A

OHRR 67A	2/28/13	100% 1A	1651109	BW	0.6
				WW	59
L83 HOB0 106	BUF CRK HOB0 1961			YW	90
SIRE	L83 MISS MULBERRY 913			MILK	16
				TM	45
OHRR FOXXY DIVA 216S-28W	LCC DIVIDE 1435K			MARB	.55
DAM	OHRR 18B DAKOTA FOXXY 216S			REA	-.21
Hobo 106 son out of Foxy Diva 216S-28W. Our only Divide daughter going back to 29K and Foxy 18B (110 MPPA).					
				FAT	.02
				BW	76
				WW	646
				YW	1200

23 OHRR 34W-DAK HOB0 73A

OHRR 73A	3/1/13	100% 1A	1651060	BW	-1.5
				WW	58
L83 HOB0 106	BUF CRK HOB0 1961			YW	93
SIRE	L83 MISS MULBERRY 913			MILK	17
				TM	47
OHRR DIVA ANABELLE 9S-34W	OHRR 107J LANDSLIDE 113R			MARB	.31
DAM	OHRR 36P COPPER CLASSY 9S			REA	.01
Here's a good one! Sire Hobo is dark and phenotypically attractive ~ a direct son of Hobo 1961 ~ a cow maker. Dam is outstanding 2-year-old with (MPPA: 108) perfect udder, wonderful EPD's and performance. Herd bull here. Keep the females.					
				FAT	.02
				BW	75
				WW	671
				YW	1152

24 OHRR 214S-VIC ADVANCE 81A

OHRR 81A	3/5/13	100% 1A	1652006	BW	0.2
VGW TREMOR 112	BUF CRK THE RIGHT KIND U199			WW	63
SIRE	VGW 896-QUEEN 0939			YW	103
OHRR 107J ADVANNA 214S	4L ADVANTAGE R9N			MILK	21
DAM	SHHM ANNABELLE 107J			TM	52
Pictured in ads ~ 81A has it all: eye appeal, great dam and sire, pounds and numbers. Take a good look here.				MARB	.38
				REA	.19
				FAT	.05
				BW	86
				WW	699
				YW	1195



LOT 24



LOT 25

25 OHRR 2R GOLD TRUST 84A

OHRR 84A	3/6/13	100% 1A	1651030	BW	2.1
OHRR 58R GOLD TRUST 39X	RED GLOBAL TRUST 21T			WW	69
SIRE	OHRR 63K SUMMER GOLD 58R			YW	108
OHRR 214-R9N JR MISS 2R	4L ADVANTAGE R9N			MILK	15
DAM	PFFR MS LASS 214			TM	50
Gold Trust out of a favorite OHR cow ~ 2R (102 MPPA) . 84A will be one to watch for on sale day. Great EPD's and performance.				MARB	.34
				REA	.23
				FAT	-.01
				BW	90
				WW	729
				YW	1345

26 OHRR 13Y-VIC TRISTA 85A

OHRR 85A	3/7/13	100% 1A	1651043	BW	-0.7
VGW TREMOR 112	BUF CRK THE RIGHT KIND U199			WW	66
SIRE	VGW 896-QUEEN 0939			YW	112
OHRR 53T TRISTA 13Y	RED GLOBAL TRUST 21T			MILK	20
DAM	OHRR 18B FOXXY VANNA 53T			TM	53
Nice 2-year-old dam out of Trust and ET daughters of Foxy 18B (110 MPPA). Lots of good individuals in this pedigree.				MARB	.40
				REA	.14
				FAT	.03
				BW	73
				WW	605
				YW	1055

27 OHRR 716-228 RED CAYENE 86A

OHRR 86A	3/7/13	100% 1A	1651084	BW	-1.5
JECA U228	WHITSTONE CAYENNE 423R			WW	48
SIRE	JECA GOLD STAR			YW	81
LUCHT RED MISS WIX 716	5L DIRECT FIRE 1641-6443			MILK	27
DAM	LUCHT MISS WIX 2612			TM	51
Another good heifer bull with a good structure and a steady producing, trouble free dam.				MARB	.52
				REA	.15
				FAT	-.02
				BW	75
				WW	609
				YW	1065

28 OHRR 102R-DAK TRUST 91A

OHRR 91A	3/8/13	100% 1A	1651103	BW	-0.1
RED GLOBAL TRUST 21T	LCC ABOVE & BEYOND 1300 J			WW	62
SIRE	RED GLOBAL'S LAKINA 87R			YW	101
OHRR 2M ADV. SHAREE 102R	4L ADVANTAGE R9N			MILK	23
DAM	OHRR 503 COPPER SHAREE 2M			TM	54
Trust son out of the great 102R cow (102 MPPA) ~ moderate, pretty, good uddered and always has a great calf. GD 2M was a superior donor cow at OHR. Great numbers!				MARB	.19
				REA	.02
				FAT	-.01
				BW	82
				WW	727
				YW	1227

29 OHRR 58R GOLD VIC 92A

OHRR 92A	3/8/13	100% 1A	1651075	BW	-0.1
VGW TREMOR 112	BUF CRK THE RIGHT KIND U199			WW	53
SIRE	VGW 896-QUEEN 0939			YW	88
OHRR 63K SUMMER GOLD 58R	LCHMN RAMPAGE 1098E			MILK	20
DAM	OHRR 4039 MS SUMMER 63K			TM	46
Right Kind grandson out of one of Ed's favorite cows: He goes back to McIntosh and Rampage on dam side. Great EPD's and carcass. Maternal brother to 39X ~ high seller in 2012.				MARB	.44
				REA	-.08
				FAT	.03
				BW	85
				WW	614
				YW	1244



LOT 29

30 OHRR 742 LANDMARK 96A

OHRR 96A	3/11/13	100% 1A	1651087	BW	1.2
				WW	65
OHRR DAKOTA LANDMARK 5T	COLEY'S ADVANCE 5108			YW	97
SIRE	OHRR 1098 CLASSY 48L			MILK	17
				TM	49
L83 MISS RAMBLER 742	MFIN FINCHBULL M75			MARB	.68
DAM	RED MAC MISS RAMBLER 6L			REA	.12
				FAT	-.01
				BW	87
				WW	696
				YW	1150

Landmark sons and daughters are doing a great job at OHR. Dam is a feminine, productive GD of Rambler 5162. Great numbers here.

31 OHRR 60P GOLD TRUST 98A

OHRR 98A	3/11/13	100% 1A	1651077	BW	-0.5
				WW	54
OHRR 58R GOLD TRUST 39X	RED GLOBAL TRUST 21T			YW	85
SIRE	OHRR 63K SUMMER GOLD 58R			MILK	19
				TM	46
OHRR 2M META SHAREE 60P	OLC DAYMAKER J164			MARB	.38
DAM	OHRR 503 COPPER SHAREE 2M			REA	-.01
				FAT	-.02
				BW	81
				WW	582
				YW	1078

Gold Trust out of the good 60P cow. She goes back to Copper Rob. GD 2M was a favorite donor cow at OHR.



2M ~ GRANDDAM OF LOT 31



32 OHRR 87R-COPR CASEY 99A

OHRR 99A	3/11/13	100% 1A	1651094	BW	0.6
				WW	62
RED GLOBAL TRUST 21T	LCC ABOVE & BEYOND 1300J			YW	96
SIRE	RED GLOBAL'S LAKINA 87R			MILK	19
				TM	50
OHRR 104M COPPER CASEY 87R	OHRR DAKOTA COPPER 29K			MARB	.24
DAM	OHRR 1098 MS CASEY 104M			REA	-.01
				FAT	-.01
				BW	86
				WW	705
				YW	1113

Trust son out of a favorite Dakota Copper daughter ~ going back to foundation cow, Casey 118, a donor cow. Great individuals in this pedigree.

33 OHRR 19T-VIC TRUST 103A

OHRR 103A	3/14/13	100% 1A	1651046	BW	-3.0
				WW	53
RED GLOBAL TRUST 21T	LCC ABOVE & BEYOND 1300J			YW	88
SIRE	RED GLOBAL'S LAKINA 87R			MILK	18
				TM	45
OHRR 83L KIMA FAYET 19T	SRR RED CANYON 213			MARB	.39
DAM	OHRR 182H FAYET 83L			REA	-.02
				FAT	-.03
				BW	71
				WW	622
				YW	1194

Trust son with Grand Canyon, Red Canyon, Glacier Explorer, and the great Kurube 112H cow on dam's side. We like this pedigree!

34 OHRR 23T DAK TRUST 110A

OHRR 110A	3/22/13	100% 1A	1651052	BW	3.2
				WW	65
RED GLOBAL TRUST 21T	LCC ABOVE & BEYOND 1300J			YW	103
SIRE	RED GLOBAL'S LAKINA 87R			MILK	15
				TM	48
OHRR 62M LADY DANCER 23T	COLEY'S ADVANCE 5108			MARB	.23
DAM	OHRR 9502 RAMS EVE 62M			REA	.12
				FAT	-.01
				BW	96
				WW	575
				YW	1129

Solid on dam side ~ 23T goes back to 62M and 9502, dam of Dakota Copper.

35 OHRR 7S FOXXY TRISTA 111A

OHRR 111A	3/23/13	100% 1A	1651035	BW	0.5
				WW	63
RED GLOBAL TRUST 21T	LCC ABOVE & BEYOND 1300J			YW	102
SIRE	RED GLOBAL'S LAKINA 87R			MILK	20
				TM	52
OHRR 344 FOXXY ROXY 7S	RBRTS MCINTOSH II 344			MARB	.18
DAM	OHRR FOXXY ROXY 22L			REA	.18
				FAT	.02
				BW	83
				WW	699
				YW	1195

Trust son, Dam 7S (104 MPPA) has produced some high sellers ~ her sire, 344, was our foundation herd sire. GD 22L (106 MPPA) was a feminine beauty!



22L ~ GRANDDAM OF LOT 35

36 OHRR 28R MACKS VIC 114A

OHRR 114A	3/24/13	100% 1A	1651054	BW	0.7
VGW TREMOR 112	BUF CRK THE RIGHT KIND U199			WW	62
SIRE	VGW 896-QUEEN 0939			YW	100
OHRR 745 MACKS TANA 28R	RBRTS MCINTOSH II 344			MILK	18
DAM	FFR MSTHUNDERHEART 745			TM	49
VGW Tremor 112 son with some of our best cows damsides: McIntosh's dam, Lass, and Miss Heart 745 were perfect uddered, feminine cows. Everything is good here!				MARB	.36
				REA	.12
				FAT	-.03
				BW	88
				WW	640
				YW	1048

37 OHRR 513-DAKOTA VIC 117A

OHRR 117A	3/30/13	100% 1A	1651072	BW	0.1
VGW TREMOR 112	BUF CRK THE RIGHT KIND U199			WW	59
SIRE	VGW 896-QUEEN 0939			YW	99
FLW RUBY TOP 513	GILCHRIST COYOTE B225			MILK	23
DAM	FLW RED ZEEZEE TOP 324			TM	53
Right Kind grandson out of our 513 cow (108 MPPA), dam of herd bulls. She has put out some great ones ~ but no daughters. Another great herd sire here. He has it all!				MARB	.34
				REA	.13
				FAT	-.04
				BW	84
				WW	729
				YW	1052

Fall Red Angus Bulls

38 OHRR 95R LANDMARK 134Z

OHRR 134Z	9/4/12	100% 1A	1604096	BW	1.1
OHRR DAKOTA LANDMARK 5T	COLEY'S ADVANCE 5108			WW	59
SIRE	OHRR 1098 CLASSY 48L			YW	88
OHRR 15L DAK MAHOGANY 95R	OHRR DAKOTA COPPER 29K			MILK	17
DAM	OHRR 65H MAHOGNY 15L			TM	46
Embryo calf from one of our most potent 29K daughters, 95R. A member of the great uddered Mahogany family, she has earned a 102.5 MPPA in our herd. This is a powerful bull with great length and muscle. His 205 day weight was taken well past 205 and these fall born calves didn't get any extra care during the winter and spring - so don't be fooled by his 205 day weight. Jan 6th wt = 1520				MARB	.43
				REA	-.01
				FAT	-.02
				BW	82
				WW	596
				YW	1107



LOT 38

95R ~ DAM OF LOT 44



39 OHRR 48R-5T DAKOTA ROB 136Z

OHRR 136Z	9/4/12	100% 1A	1604088	BW	1.0
OHRR DAKOTA LANDMARK 5T	COLEY'S ADVANCE 5108			WW	56
SIRE	OHRR 1098 CLASSY 48L			YW	88
OHRR 9930 RED CANYON ROB 48R	SRR RED CANYON 213			MILK	15
DAM	SEXTON'S SEMONE 9930			TM	43
Powerful bull with extra muscle, length and great structure! Dam is a great uddered, heavy milking, productive daughter of the super 9930. Dam side has the old school genetic giants: King Rob, Grand Canyon and Logan! Jan 6th wt = 1515. One of the best Landmark sons to Date! We will be retaining an interest.				MARB	.54
				REA	.13
				FAT	-.02
				BW	80
				WW	595
				YW	1112



LOT 39

9930 ~ GRANDDAM OF LOT 31



40 OHRR 63T LANDMARK 138Z

OHRR 138Z	9/20/12	100% 1A	1604091	BW	0.4
OHRR DAKOTA LANDMARK 5T	COLEY'S ADVANCE 5108			WW	54
SIRE	OHRR 1098 CLASSY 48L			YW	82
OHRR 75H CHOICE VANNA 63T	4L ADVANTAGE R9N			MILK	12
DAM	RED HOWE MS CHOICE 75H			TM	38
Another good son of Landmark that would be great for use on heifers. Landmark was our top bull for Marbling, YW, second for REA and number one for eye appeal in our 2007 class of bulls. Jan 6th wt = 1360.				MARB	.51
				REA	.21
				FAT	-.02
				BW	76
				WW	538
				YW	938

41 OHRR 218S LANDMARK 139Z

OHRR 139Z	9/26/12	100% 1A	1604097	BW	0.4
OHRR DAKOTA LANDMARK 5T	COLEY'S ADVANCE 5108			WW	58
SIRE	OHRR 1098 CLASSY 48L			YW	91
OHRR 9502 AVA LANA 218S	PIE AVALANCHE 381			MILK	15
DAM	MESSMER OPHELIA 9502			TM	44
A good low birth weight bull that would be great for heifers! This one is a grandson of 9502, dam of the great Dakota Copper 29K. He has balanced EPDs with good REA and IMF too. Jan 6th wt = 1335				MARB	.50
				REA	.35
				FAT	-.02
				BW	60
				WW	503
				YW	964

42 OHRR 015T DAKOTA LIN 146Z

OHRR 146Z	10/26/12	100% 1A	1604093	BW	1.6
OHRR DAKOTA LANDMARK 5T	COLEY'S ADVANCE 5108			WW	73
SIRE	OHRR 1098 CLASSY 48L			YW	116
LCF LIN 015T	OLC ECHETA ROB R73			MILK	15
DAM	OLC LIN P182			TM	52
This fall bull is a little younger giving him a bigger adjusted WW. Good muscle, length and performance - just like his sire. Dam's MPPA is 103. He's in the top 4% of the breed for WW & YW and he will still be good for heifers. Jan 6th wt = 1395.				MARB	.53
				REA	.12
				FAT	-.01
				BW	80
				WW	710
				YW	1168

43 OHRR 95R LANDMARK 148Z

OHRR 148Z	10/27/12	100% 1A	1604092	BW	1.3
OHRR DAKOTA LANDMARK 5T	COLEY'S ADVANCE 5108			WW	59
SIRE	OHRR 1098 CLASSY 48L			YW	89
OHRR 15L DAK MAHOGANY 95R	OHRR DAKOTA COPPER 29K			MILK	17
DAM	OHRR 65H MAHOGNY 15L			TM	46
Youngest of our fall RA bulls and a good one! Natural calf from the great 95R and another great calving ease bull that is long and well muscled. Jan. 6th wt = 1305				MARB	.43
				REA	-.01
				FAT	-.02
				BW	80
				WW	650
				YW	982



LOT 43

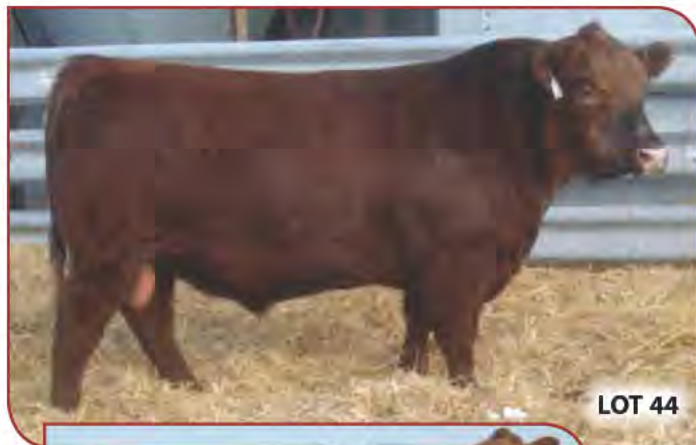
65H
GREAT-GRANDDAM
OF LOT 43



2-Year-Old Red Angus Bull

44 OHRR THUMPER 105R-203Z

OHRR 203Z	2/16/12	100% 1A	1650821	BW	1.0
RED DMM BRYLOR THUMP 2T	RED NORTHLINE ROB ROY 122K			WW	56
SIRE	RED STEN ESSENCE 42G			YW	86
OHRR 63G KIMAS MAHOGANY 105R	SRR RED CANYON 213			MILK	10
DAM	OHRR MS MAHOGANY 63G			TM	38
A very complete bull with good depth, muscle, correctness and a very maternal pedigree! The Mahogany line on the bottom was our best with high volume, heavy milking females generations deep! Thump and his mother won many titles in Canada as a pair! Used in our herd some last year.				MARB	.33
				REA	-.21
				FAT	.00
				BW	84
				WW	620
				YW	1116



LOT 44



63G
GRANDDAM
OF LOT 44

105R ~ DAM
OF LOT 44
AS A HEIFER CALF



Sale Day Phone ~ 701-484-5779

Video of the entire sale offering
will be available in early February.
Request a DVD or see it at
www.olsonredpower.com

Olson's Red Power Advantage:

- + More performance, muscle & maternal excellence.
- + Carcass, performance, scrotal & pelvic data available.
- + Bulls tested for BVD & from Johnes Free herd.
- + Bulls developed on roughage ration to ensure soundness.
- + Free wintering on bulls over \$2500, 300 mile delivery.
- + \$50 discount if you take your bull home sale day.
- + Reputation breeder of quality registered cattle since 1936!

Red Angus Heifers

45 OHRR 04Y-VIC MS NELLY 3A

OHRR 3A	1/11/13	100% 1A	1651039	BW	-1.9
VGW TREMOR 112	BUF CRK THE RIGHT KIND U199			WW	59
SIRE	VGW 896-QUEEN 0939			YW	93
PFFR MS NELLY 04Y	RED SIX MILE SAKIC 8325			MILK	18
DAM	PFFR MS NELLY 3101			TM	48
One of the good females we have to sell this year. Dam is a 2-year-old and has done a great job.				MARB	.23
				REA	-.06
				FAT	.03
				BW	63
				WW	616
				YW	1034

46 OHRR 99Y-HB MS MAHOGONY 10A

OHRR 10A	1/25/13	100% 1A	1651100	BW	-3.5
L83 HOBO 106	BUF CRK HOBO 1961			WW	49
SIRE	L83 MISS MULBERRY 913			YW	83
OHRR 110T MAHGNY TRISTA 99Y	RED GLOBAL TRUST 21T			MILK	16
DAM	OHRR 63G KIMAS MAHOGANY 110T			TM	40
Dam is a very nice 2-year-old Mahogany/Trust. We should keep this one ~ we like this pedigree a lot. Great EPD's and carcass.				MARB	.37
				REA	-.12
				FAT	.00
				BW	56
				WW	597
				YW	927

47 OHRR 8001-GP MS ESSENCE 17A

OHRR 17A	1/30/13	100% 1A	1651119	BW	-0.1
PIE GAME PLAN 0618	VGW GAME PLAN 508			WW	57
SIRE	PIE PRIME CANYON 927			YW	88
LMG MISS ESSENCE 8001	RED FINE LINE MULBERRY 26P			MILK	20
DAM	RED DMM MISS ESSENCE 58M			TM	48
Sale feature here! We planned to keep her as we have sold her two previous sisters at ND Select for \$8,500 and \$4,500. Our loss is your gain. What a beauty here! Dam has 102 MPAA.				MARB	.51
				REA	-.18
				FAT	.03
				BW	76
				WW	602
				YW	1024



LOT 47

48 OHRR 6U MAC TRISTA 20A

OHRR 20A	2/2/13	99.4% 1B	1651032	BW	-5.0
OHRR 58R GOLD TRUST 39X	RED GLOBAL TRUST 21T			WW	42
SIRE	OHRR 63K SUMMER GOLD 58R			YW	68
OHRR MACS BONITA 60J-6U	RED BRYLOR MASTER PLAN 17M			MILK	11
DAM	OHRR 35B MACS LELA 30J			TM	31
Gold Trust daughter out of a Mc 344 GD. Great cows in this pedigree. 20A should be a good one. Category 1B; 99.4%.				MARB	.02
				REA	-.12
				FAT	-.01
				BW	55
				WW	498
				YW	888

49 OHRR 70R-39X TRSTIE FAYT 31A

OHRR 31A	2/11/13	100% 1A	1651083	BW	1.2
OHRR 58R GOLD TRUST 39X	RED GLOBAL TRUST 21T			WW	60
SIRE	OHRR 63K SUMMER GOLD 58R			YW	94
OHRR 15M ADVANNA FAYET 70R	4L ADVANTAGE R9N			MILK	19
DAM	OHRR 38K FAYET 15M			TM	49
Gold Trust daughter with Scarlet and Fayet on dam's side. Explorer females are the best. Great performance and EPD's.				MARB	.34
				REA	-.13
				FAT	.01
				BW	78
				WW	633
				YW	869

50 OHRR 213T-GP GEMMA 37A

OHRR 37A	2/12/13	100% 1A	1651117	BW	3.0
PIE GAME PLAN 0618	VGW GAME PLAN 508			WW	70
SIRE	PIE PRIME CANYON 927			YW	108
OHRR T3 LADY CHIEF 213T	T3 CHIEF 2887			MILK	19
DAM	ROY ADVANCE A209			TM	54
Great heifer with good thickness, volume, structural correctness and beautiful teat placement. Show potential and great cow future!				MARB	.58
				REA	-.17
				FAT	-.01
				BW	81
				WW	664
				YW	1024



LOT 50

51 OHRR 32N-5T DAK HONEY 38A

OHRR 38A	2/13/12	100% 1A	1651058	BW	-1.7
OHRR DAKOTA LANDMARK 5T				WW	56
COLEY'S ADVANC 5108				YW	87
SIRE OHRR 1098 CLASSY 48L				MILK	15
ESL MONU HONEY 503				TM	43
BJR MONU 4X-303				MARB	.43
DAM OHRR 312 MACS HONEY 15				REA	.17
This cow should have a great future. Dam 32N (MPPA 102) has been a great producer and has Mc 344 and Rampage in her pedigree.				FAT	-.02
				BW	64
				WW	586
				YW	923

52 OHRR 107Y-HB TIFFANY 40A

OHRR 40A	2/13/12	100% 1A	1651104	BW	2.2
L873 HOBO 106				WW	58
BUF CRK HOBO 1413				YW	94
SIRE L83 MISS MULBERRY 913				MILK	17
OHRR 55R-228 TIFFANY 107Y				TM	47
JECA U228				MARB	.30
DAM OHRR LMF RAMBOS TIFFANY 55R				REA	-.07
Another great heifer off a 2-year-old first calver. We're excited about Hobo females as his sire, 1961, is known as a cow maker. Nice numbers and EPD's.				FAT	-.03
				BW	75
				WW	605
				YW	980

53 OHRR 71Y-GP MS CLASSY 48A

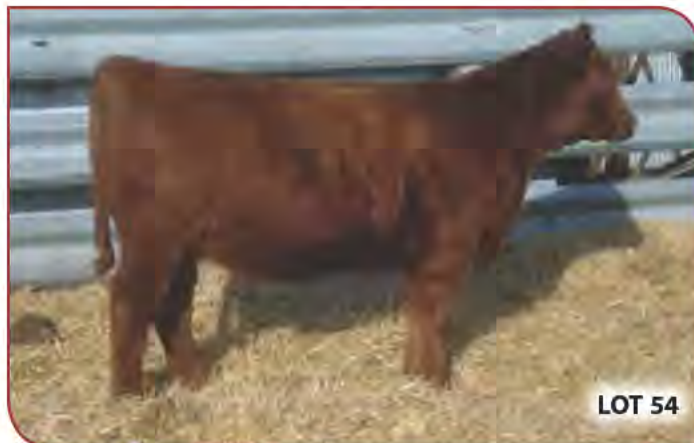
OHRR 48A	2/15/13	100% 1A	1651085	BW	1.1
PIE GAME PLAN 0618				WW	64
VGW GAME PLAN 508				YW	98
SIRE PIE PRIME CANYON 927				MILK	18
OHRR 39R CLASSY 71Y				TM	50
OHRR 107J LANDSLIDE 113R				MARB	.46
DAM OHRR 5E DAKOTA CLASSY 39R				REA	-.08
Here's a great one ~ dam 71Y (104 MPPA). She's pretty as a picture and has a loaded maternal pedigree ~ the best of the best. Great production and EPD's.				FAT	-.01
				BW	72
				WW	704
				YW	1136



LOT 53

54 OHRR 720 MS TRISTA 51A

OHRR 51A	2/19/13	100% 1A	1651086	BW	0.6
RED GLOBAL TRUST 21T				WW	56
LCC ABOVE & BEYOND 1300J				YW	91
SIRE RED GLOBAL'S LAKINA 87R				MILK	17
HLG MISS 23R-720				TM	45
OHRR 4K RED CUB 23R				MARB	.26
DAM LTD 13588-2448 0				REA	.04
One of the best 2013 females. Sire of dam was purchased at OHR. Trust female were dams of many top individuals in this years calf crop.				FAT	-.02
				BW	74
				WW	596
				YW	971



LOT 54

55 OHRR 211T-T TRISTA ANA 76A

OHRR 76A	3/2/13	100% 1A	1651115	BW	-2.7
RED GLOBAL TRUST 21T				WW	51
LCC ABOVE & BEYOND 1300J				YW	88
SIRE RED GLOBAL'S LAKINA 87R				MILK	20
OHRR 9502 AVALANA 211T				TM	46
PIE AVALANCHE 381				MARB	.27
DAM MESSMER OPHELIA 9502				REA	-.14
Trust daughters raised some of the highest indexing calves this year. Dam, 211T, is an ET out of 9502 ~ dam of Dakota Copper 29K. She'll be a great investment.				FAT	-.02
				BW	60
				WW	549
				YW	863

56 OHRR 74U-228 MS CAYENNE 83A

OHRR 83A	3/6/13	100% 1A	1651088	BW	2.7
JECA U228				WW	68
WHITSTONE CAYENNE 423R				YW	107
SIRE JECA GOLD STAR				MILK	17
OHRR RAMS CLASSY 39R-74U				TM	50
WR MR. RED DAWG 5335				MARB	.43
DAM OHRR 5E DAKOTA CLASSY 39R				REA	.09
Only Cayenne female in the sale. Dam is a Dakota Copper/Red Dawg. Great production and EPD's.				FAT	-.02
				BW	78
				WW	618
				YW	975

57 OHRR 113Y-HOBO SCARLET 88A

OHRR 88A	3/8/13	100% 1A	1651110	BW	-1.2
L83 HOBO 106	BUF CRK HOBO 1961			WW	51
SIRE	L83 MISS MULBERRY 913			YW	82
OHRR 15M SCARLET LANA 113Y	OHRR 107J LANDSLIDE 113R			MILK	17
DAM	OHRR 38K FAYET 15M			TM	43
Super maternal pedigree here. We should be keeping this girl. Hobo, Mulberry, Landslide, Explorer, Scarlet, and Fayet ~ all our best bloodlines. Great numbers and EPD's.				MARB	.29
				REA	-.20
				FAT	-.01
				BW	66
				WW	615
				YW	962

58 OHRR 30U-5T SHAREE LANA 95A

OHRR 95A	3/10/13	100% 1A	1651056	BW	2.0
OHRR DAKOTA LANDMARK 5T	COLEY'S ADVANCE 5108			WW	65
SIRE	OHRR 1098 CLASSY 48L			YW	101
OHRR BONITA SHAREE 60P-30U	RED BRYLOR MASTER PLAN 17M			MILK	10
DAM	OHRR 2M META SHAREE 60P			TM	42
Maternal power on dam's side. 30U is an excellent cow as are GD and GGD. Cows 60P and 2M ~ super donor cow. Landmark dam and GD were superior cows also!				MARB	.4*9
				REA	-.05
				FAT	-.03
				BW	80
				WW	616
				YW	966

59 OHRR HOBO LANA 124Y 104A

OHRR 104A	3/15/13	99.7% 1B	APPLIED	BW	-1.1
L83 HOBO 106	BUF CRK HOBO 1961			WW	51
SIRE	L83 MISS MULBERRY 913			YW	81
OHRR 40T DAKOTA LANA 124Y	OHRR DAKOTA LANDMARK 5T			MILK	13
DAM	OHRR 30J MACS VANNA 40T			TM	39
A fancy Hobo heifer out of a good, moderate Landmark first calf heifer. Note this heifer is 99.7% 1B. Should make a great cow!				MARB	.46
				REA	-.03
				FAT	.01
				BW	72
				WW	652
				YW	1020

Reference Sires

A VGW TREMOR 112

VGW112	2/9/11	100% 1A	1444917	BW	-1.9
BUF CRK THE RIGHT KIND U199	BUF CRK LANCER R107			WW	68
SIRE	BUF CRK SHOSHONE R353			YW	118
VGW 896-QUEEN 0939	MDM CHATEAU 32-89-6			MILK	22
DAM	VGW 40-QUEEN 0320			TM	56
Powerful son of Right Kind that we selected from the Westpahl's in 2012. Incredible birth to yearling spread. Dam has 103.7 MPPA. Total outcross pedigree for us also!				MARB	.51
				REA	.17
				FAT	.07
				BW	76
				WW	803
				YW	1514

B L83 HOBO 106

NDL106	2/14/11	100% 1A	1448758	BW	-1.7
BUF CRK HOBO 1961	BUF CRK HOBO 1413			WW	56
SIRE	BUF CR CARRIE VC1174			YW	91
L83 MISS MULBERRY 913	RED FINE LINE MULBERRY 26P			MILK	13
DAM	L83 MORNING GLORY 320			TM	41
A great son of the old Hobo bull from our friends the Lodoens at Westhope, ND. Was used with great success on heifers the first 2 years. Sired some of our best calves this year!				MARB	.42
				REA	-.25
				FAT	.02
				BW	84
				WW	681
				YW	1195

C PIE GAME PLAN 0618

PIE 0618	9/15/10	100% 1A	1407095	BW	-1.7
VGW GAME PLAN 508	LCC IMF B054M			WW	56
SIRE	VGW PT-DORY 0361			YW	91
PIE PRIME CANYON 927	BUF CRK CHF 824-1658			MILK	22
DAM	PIE PRIMETTE 723			TM	50
Dam was one of the top sellers in Piepers cow sale. She boasts a 110 MPPA! This bull puts a very attractive look on his calves and also sires good muscle and performance. Contact us for semen on him.				MARB	.67
				REA	-.11
				FAT	.00
				BW	68
				WW	727
				YW	NA



DRU HELPING DAD ON THE FARM



PIE GAME PLAN 0618

Reference Sires

D RED GLOBAL TRUST 21T

GNAS 21T	1/19/07	100% 1A	1378943	BW	-1.7
				WW	56
LCC ABOVE & BEYOND 1300J				YW	91
SIRE				MILK	22
LCHMAN ABOVE HEAVEN 1018F				TM	50
SIRE				MARB	.67
HXC 701G				REA	-.11
RED GLOBAL'S LAKINA 87R				FAT	.00
MLK CRK CUB 722				BW	68
DAM				WW	727
RED ANGUS MEDOS LAKINA 77D				YW	1410

International playboy! Trust is a power bull with a very kind BW EPD ~ producing great offspring as you can see. Purchased in 2009 from Northline Red Angus in Sask., Canada. Owned with Rich Leiseth and Tony Schuler in MN. Deceased. Note his great birth to yearling spread! Contact us for semen!



RED GLOBAL TRUST 21T

Reference Sires

F OHRR DAKOTA LANDMARK 5T

OHRR 5T	1/23/07	100% 1A	1196965	BW	0.4
				WW	62
COLEY'S ADVANCE 5108				YW	95
SIRE				MILK	12
RBJR ADVANCE A709				TM	43
PERKS MISS RAMBO 8105				MARB	.83
OHRR 1098 CLASSY 48L				REA	.26
LCHMN RAMPAGE 1098E				FAT	-.01
DAM				BW	72
OHRR 925 CUB LASS 46G				WW	697
				YW	1380

5T is an outstanding individual with a golden pedigree. Raised here and out of phenotypically near perfect parents. Dam, Classy 48L, is long-bodied, feminine and perfectly uddered (MPPA: 105). Note his excellent carcass EPD's with especially high marbling of .83!



OHRR DAKOTA LANDMARK 5T

E OHRR 58R GOLD TRUST 39X

OHRR 39X	2/19/10	100% 1A	1398375	BW	-1.5
				WW	53
RED GLOBAL TRUST 21T				YW	86
SIRE				MILK	18
LCC ABOVE & BEYOND 1300J				TM	45
RED GLOBAL'S LAKINA 87R				MARB	.46
OHRR 63K SUMMER GOLD 58R				REA	-.04
LCHMN RAMPAGE 1098E				FAT	.02
DAM				BW	79
OHRR 4039 MS SUMMER 63K				WW	703
				YW	1346

Sold for \$21,000 in our 2012 Red Power Sale to John and Stephanie Jung, Lazy Bar Red Angus, Mina, SD. His first calf crop was featured in last years sale. We have some very good bulls again this year. The more we use him the better his EPD's get. Contact us for semen on Gold Trust



OHRR 56R GOLD TRUST 39X

G OHRR DAKOTA COPPER 29K

OHRR 29K	1/28/00	100% 1A	709597	BW	-1.1
				WW	57
LCHMAN COPPER ROB 1204D				YW	83
SIRE				MILK	22
LMAN KING ROB 8621				TM	51
COOPER LASS 2392				MARB	.10
MESSMER OPHELIA 9502				REA	.12
LCC HEAVEN OR BUST 1000B				FAT	.02
DAM				BW	75
NODAK LADY LICORICE				WW	802
				YW	NA

We got 29K back to use naturally in our herd for a last hurrah at 11 years old; pictured at 11½ years old in fall 2011. Owned with Pederson's Broken Heart in South Dakota. Semen available through ABS!



OHRR DAKOTA COPPER 29K

Service Reference Sire

A SIX MILE KRUGER 11Z

SIXM 11Z	2/10/12	100% 1A	1605422	BW	-0.3
RED SIX MILE RUGER 221X	RED SIX MILE ULTIMATUM 409U	WW	56	YW	92
SIRE	RED SIX MILE SHAWNEE 116T	MILK	18	TM	43
RED GLESBAR SYRINGS 046S	RED GLESBAR DIVIDEND 50M	MARB	.21	REA	.21
DAM	RED GLESBAR SYRINGA 10N	FAT	-.02	BW	84
		WW	769	YW	NA

Our pick of the bulls in last years Six Mile RA sale. Kruger has great muscle, depth, performance and a super mother. Service sire to some of the bred females selling.



046S ~ DAM OF
KRUGER 11Z

Red Angus Bred Females

60 OHRR 214S AVA LANA 31Y

OHRR 31Y	2/16/11	100% 1A	1466550	BW	1.4
OHRR DAKOTA LANDMARK 5T	COLEY'S ADVANCE 5108	WW	59	YW	90
SIRE	OHRR 1098 CLASSY 48L	MILK	16	TM	46
OHRR 107J ADVANNA 214S	4L ADVANTAGE R9N	MARB	.49	REA	.34
DAM	SHHM ANNABELLE 107J	FAT	.00	BW	84
		WW	588	YW	NA

Exposed to Six Mile Kruger 11Z - 5/6 to 7/6.
Exposed to OHRR Thumper 105R-203Z - 7/12 to 8/9.
Ultrasound less than 30 days or open.
PG check on 11/16 indicates pregnant - projected to calve after April 1st.



107J ~ GRANDDAM OF LOT 60

61 OHRR 40T DAKOTA LANA 124Y

OHRR 124Y	5/2/11	99.4% 1B	1466554	BW	-0.5
OHRR DAKOTA LANDMARK 5T	COLEY'S ADVANCE 5108	WW	48	YW	71
SIRE	OHRR 1098 CLASSY 48L	MILK	12	TM	36
OHRR 30J MACS VANNA 40T	4L ADVANTAGE R9N	MARB	.49	REA	.18
DAM	OHRR 35B MACS LELA 30J	FAT	.00	BW	78
		WW	506	YW	NA

Exposed to OHRR 58R Gold Trust 39X - 4/18 to 5/11.
Exposed to OHRR Dakota Landmark 5T - 5/14 to 7/8.
Ultrasound July 26 shows 75 days pregnant.
Projected calving date 2/22.

62 OHRR 53T FOXXY LYDIA 53X

OHRR 53X	2/27/10	100% 1A	1428768	BW	1.4
OHRR DAKOTA LANDMARK 5T	COLEY'S ADVANCE 5108	WW	62	YW	96
SIRE	OHRR 1098 CLASSY 48L	MILK	12	TM	42
OHRR 18B FOXXY VANNA 53T	4L ADVANTAGE R9N	MARB	.63	REA	.21
DAM	ROBERTS PR-FOXXY 18B	FAT	-.01	BW	62
		WW	647	YW	NA

Exposed to Six Mile Kruger 11Z - 5/3 to 7/6.
Exposed to OHRR Thumper 105R-203Z - 7/12 to 8/9.
Ultrasound less than 30 days or open.
PG check on 11/16 indicates pregnant
Projected to calve after April 1st to late service.

More Choice...

Less Corn!

- Genetic Risk Management
- Increase Percentage Choice
- Decrease Days on Feed
- Improve Conversion
- Improve Disposition & Decrease Dark Cutters
- Decrease Summer Stress
- Access Angus Product Lines
- USDA Approved Source & Age Verification sufficient for substantiating COOL claims

MARC CYCLE VII DATA Report 22

Breed of Sire	% USDA Choice
Red Angus	89.9
Angus	87.6
Simmental	65.7
Hereford	65.4
Charolais	61.9
Gelbvieh	57.7
Limousin	56.9

Watch for our continued series

The Ranchers' Guide...

Information for the profit minded producer

Exclusive Broadcast Available Free at **DVAuction**

Building Better Beef...

Red Angus

(940) 387-3502 • RedAngus.org

63 OHRR 212U MAHOGANY BERRY 132X

OHRR 132X	4/18/10	100% 1A	1398452	BW	3.5
				WW	70
OHRR MAHOGNY BERRY 15L-11U	RED FINE LINE MULBERRY 26P			YW	111
SIRE	OHRR 65H MAHOGNY 15L			MILK	9
				TM	44
OHRR 65H RED MAHOGANY 212U	WR MR. RED DAWG 5335			MARB	.37
DAM	OHRR 508 MAHOGANY 65H			REA	-.03
				FAT	-.05
Exposed to Six Mile Kruger 11Z - 5/6 to 7/6.					
Exposed to OHRR Thumper 105R-203Z - 7/12 to 8/9.					
Ultrasound July 26, 58 days pregnant.					
Projected calving date March 9th.					
				BW	84
				WW	664
				YW	NA

64 OHRR FOXXY DIVA 216S-28W

OHRR 28W	2/9/09	100% 1A	1339955	BW	-0.2
				WW	57
LCC DIVIDE 1435K	GLACIER DIVIDE 310			YW	85
SIRE	CJ'S HOBO MABLE			MILK	19
				TM	47
OHRR 18B DAKOTA FOXXY 216S	OHRR DAKOTA COPPER 29K			MARB	.68
DAM	ROBERTS PR-FOXXY 18B			REA	-.16
				FAT	-.016
Exposed to Pie Game Plan 0618 - 5/3 to 6/3.					
Exposed to VGW Tremor 112 - 6/12 to 9/2.					
Ultrasound July 26 less than 30 days or open.					
PG check on 11/16 indicates pregnant.					
Projected to calve after April 1st.					
				BW	79
				WW	745
				YW	NA

65 OHRR COPPER FAYET 19T-49W

OHRR 49W	2/18/09	100% 1A	1339968	BW	-0.7
				WW	48
SJRA 508 LANTRY 734	BHR COPPER D 508B			YW	72
SIRE	SJRA V029 GLORY			MILK	12
				TM	36
OHRR 83L KIMA FAYET 19T	SRR RED CANYON 213			MARB	.61
DAM	OHRR 182H FAYET 83L			REA	-.17
				FAT	-.06
Exposed to VGW Tremor 112 - 5/3 to 9/2.					
July 26th ultrasound 45 days pregnant.					
Projected calving date of 3/22					
				BW	74
				WW	656
				YW	NA

66 OHRR MACS BONITA 60J-6U

OHRR 6U	1/20/08	98.8% 1B	1265341	BW	-2.2
				WW	49
RED BRYLOR MASTER PLAN 17M	BASIN SENSATION 702E			YW	75
SIRE	RED BRYLOR BONITA 66K			MILK	2
				TM	27
OHRR 35B MACS LELA 30J	RBRTS MCINTOSH II 344			MARB	-.42
DAM	LELAND RIMTOP 416-35B			REA	-.20
				FAT	-.04
Exposed to OHRR Dakota Landmark 5T - 5/14 to 7/8.					
Exposed to OHRR Thumper 105R-203Z - 7/12 to 8/9.					
July 26th ultrasound 50 days pregnant.					
Projected calving date 3/17.					
				BW	75
				WW	637
				YW	NA

67 JECA U203

JECA U203	10/2/08	100% 1A	1294930	BW	-0.8
				WW	60
WHITESTONE CAYENNE 423R	LCHMN GRANDCANYON 1244G			YW	98
SIRE	FEDES BLOCKANNA 807			MILK	27
				TM	57
JECA M33	LCHMN GOLD ROBBER 1909E			MARB	.39
DAM	HLRR GILDA 820			REA	.21
				FAT	.00
Exposed to VGW Tremor 112 - 5/6 to 9/2.					
July 26th ultrasound 61 days pregnant.					
Projected calving date of 3/6.					
				BW	65
				WW	679
				YW	NA

68 OHRR RAMS CLASSY 39R-74U

OHRR 74U	3/6/08	100% 1A	1265344	BW	1.7
				WW	65
WR MR. RED DAWG 5335	BUF CRK VALENTINO N031			YW	103
SIRE	TMAS MS FORTUNE 114			MILK	6
				TM	39
OHRR 5E DAKOTA CLASSY 39R	OHRR DAKOTA COPPER 29K			MARB	.40
DAM	OHRR MS CLASSY 5E			REA	-.10
				FAT	.02
Bred to Pie Game Plan 0618 on 5/1 then exposed to him - 5/3 to 6/3.					
Exposed to VGW Tremor 112 - 6/12 to 9/2.					
7/26 ultrasound 79 days pregnant.					
Projected calving date 2/17.					
				BW	75
				WW	595
				YW	NA

69 OHRR 83L KIMA FAYET 19T

OHRR 19T	1/31/07	100% 1A	1196994	BW	-0.7
				WW	46
SRR RED CANYON 213	LCHMN GRANDCANYON 1244G			YW	71
SIRE	BLUE RIDGE KIMA 950			MILK	15
				TM	38
OHRR 182H FAYET 83L	GLACIER EXPLORER 740			MARB	.61
DAM	RED HOWE MS KURUBA 112H			REA	-.08
				FAT	-.04
Exposed to VGW Tremor 112 - 5/6 to 9/2.					
July 26th Ultrasound less than 30 days or open.					
PG check on 11/16 indicates 4 months pregnant.					
Projected to calve after April 1st.					
				BW	66
				WW	658
				YW	NA

**112H ~ GRANDDAM OF LOT 69**

Hereford Reference Sires

30S HVH PROGRESS 4L 30S

30S	2/23/06	POLLED	42691474	BW	2.0
				WW	52
				YW	78
SHF PROGRESS P20		FELTONS LEGEND 242		MILK	21
SIRE		SHF INTRSTATE D03 G06 ET		M&G	47
HVH GENETIC QUEEN 53H 4L		GK GENETIC EXPLOSION		SC	0.8
DAM		HVH MISS 512 3SD 53H		REA	.14
Extremely deep, heavy muscled, upheaded bull with big testides and a great structure. Dam is granddam of the popular sire, Redeem. A breed improver for 13 of 16 catagories and a trait leader for Calving Ease Direct, Mature Cow Weight, Marbling, CEZ index and CHB index. He's in the top 5% of breed for CED, Mature Cow WT and Marbling. Semen is \$25, no certs required.					
				FAT	.035
				MARB	.28
				BW	90
				WW	686
				YW	1253



HVH PROGRESS 4L 30S

2-Year-Old Hereford Bull

70 OHR DKM 432X MR ATTRACTION 1205

DKM 1205	1/3/12	POLLED	43269003	BW	3.8
				WW	63
				YW	99
TOPP 432X ET		DRF JWR PRINCE VICTOR 711		MILK	20
SIRE		KBCR 19D DOMINETTE 122		M&G	52
DKM MISS SEEKER 908		SHF RADAR M326 R125		SC	1.0
DAM		TOF 9146 OLYMPIA 262L 5235 ET		REA	.52
Complete, well muscled, deep bodied 2-year-old from a full brother to 719T. Dam has a very maternal pedigree with performance and carcass also, with a 103 WWR. Top 5% of breed for WW and YW. Top 20% for M&G, REA and CHB. Used last year on a few cows and heifers.					
				FAT	-.004
				MARB	-.01
				BW	80
				WW	722
				YW	1185



LOT 70

24X OHR REDEYE 51R 24X

OHRR 24X	2/13/10	POLLED	43119452	BW	4.9
				WW	58
				YW	93
SHF RIB EYE M326 R117		KCF BENNETT 3008 M326		MILK	21
SIRE		HVH MISS HUDSON 83K 8M		M&G	50
OHR NIKITA 16G 51R		VCR EAST KODIAK 506E		SC	1.5
DAM		OHR QUESTIVA 16G		REA	.44
Powerful, heavy muscled, short marked, long bodied Rib Eye son. Dam is a top Kodiak daughter with a 104.6 WWR. A breed improver for 13 of 16 catagories. Top 5% for SC, BMI, Bil, and CHB. Top 10% for WW, CEM and Marbling.					
				FAT	-.004
				MARB	.19
				BW	95
				WW	725
				YW	1304



OHR REDEYE 51R 24X

2014 Spring Hereford Breed EPD averages - (Non Parent)

BW	WW	YW	Milk	TM	Scr	Fat	REA	Marb.
3.5	46	75	19	42	.8	.002	.28	.05

Video of the entire sale offering
will be available in early February.
Request a DVD or see it at
www.olsonredpower.com

For a DVD/Info contact:



OLSON Hereford Ranch

2713 166 Ave SE - Argusville, ND 58005
Carl Olson - (701) 361-0684 - olsoncandc@aol.com
www.olsonredpower.com
"We Breed Excitement!"

This sale will be broadcast live on the internet.

DVAuction

Broadcasting Real-Time Auctions

Real time bidding & proxy bidding available.

For questions contact Justin Dikoff at (605) 290-0635 - jdikoff@dvauction.com

Fall Hereford Bulls

71 OHR PROGRESSIVE 51P 135Z ET

OHRR 135Z	9/5/12	POLLED	APPLIED	BW	2.5
				WW	49
				YW	77
HVH PROGRESS 4L 30S	SHF PROGRESS P20			MILK	26
SIRE	HVH GENETIC QUEEN 53H 4L			M&G	50
				SC	.7
LCG KARLA FRANKLIN 51P (DOD)	LLL SPADE 106K			REA	.28
DAM	LCG KARLA BRU 129C (DOD)			FAT	.039
				MARB	.19
				BW	74
				WW	613
				YW	1022

Excellent heifer bull! Dam, granddam and both great-granddams on bottom side are all Dams of Distinction! Dam has a 99 BWR and 108 WWR. He's a breed improver for 9 of 16 categories and is top 20% for CED, Milk, and Marbling. Good solid bull, low birth weights and excellent maternal productivity. Jan. 6 WT: 1300.



LOT 71

73 OHR MO PROGRESS 107R 144Z

OHRR 144Z	10/10/12	POLLED	43444347	BW	.4
				WW	51
				YW	71
HVH PROGRESS 4L 30S	SHF PROGRESS P20			MILK	25
SIRE	HVH GENETIC QUEEN 53H 4L			M&G	50
				SC	1.0
OHR GLORIA 8255 107R	RJH MOMENTUM H45			REA	.39
DAM	OXH LOLA 8255			FAT	.026
				MARB	.15
				BW	75
				WW	616
				YW	1032

A very good, short marked, attractive bull from our great Progress son. Dam is very productive with 98.3 BWR and 104.5 WWR. He's a breed improver for 13 of 16 categories and in top 10% for CED, BW, and Mature Cow WT. Top 20% for Milk, Marbling, BMI, CEZ, and Bil. A definite heifer bull!! Jan. 6 WT: 1325



LOT 73

72 OHR PROGRESSION 51R 141Z

OHRR 141Z	10/3/12	POLLED	43440735	BW	3.2
				WW	52
				YW	82
HVH PROGRESS 4L 30S	SHF PROGRESS P20			MILK	18
SIRE	HVH GENETIC QUEEN 53H 4L			M&G	44
				SC	.9
OHR NIKITA 16G 51R	VCR EAST KODIAK 506E			REA	.31
DAM	OHR QUESTIVA 16G			FAT	.032
				MARB	.19
				BW	80
				WW	675
				YW	1114

Very good, well muscled fall bull from our calving ease sire, Progress 30S. Maternal brother sold for \$10,000 in our 2011 sale and is reference sire B in the catalog. Dam has 104.6 WWR. He's a breed improver for 13 of 16 categories and in the top 10% for Marbling and 20% for CHB. Jan. 6 WT: 1415



LOT 72

74 RED BALDY BULL 147Z

OHRR 147Z	10/15/12	50% HFD	NA	BW	NA
				WW	NA
				YW	NA
HVH PROGRESS 4L 30S	SHF PROGRESS P20			MILK	NA
SIRE	HVH GENETIC QUEEN 53H 4L			M&G	NA
				SC	NA
RED ANGUS	RED ANGUS			REA	NA
DAM	RED ANGUS			FAT	NA
				MARB	NA
				BW	82
				WW	737
				YW	1108

Excellent fall born Red Baldy Bull with great muscle, depth and performance! Dam is a wonderful commercial Red Angus recipient cow who raised a \$12,000 bull in our 2012 sale. Jan. 6 WT: 1385



LOT 74

75 GOBLE OHR GOOD TIMING 101A

BJG 101	1/1/13	HORNED	43354416	BW	3.7
CRR ABOUT TIME 743	THM DURANGO 4037	WW	54	YW	83
SIRE	CRR D03 CASSIE 206	MILK	29	M&G	56
LCC 14T DREAM CATCHER 9173	AF MASTER 10K 29F	SC	.8	REA	.52
DAM	LPH FANTASY 700	FAT	-.029	MARB	.03
Long bodied, correct, stylish son of the popular Denver champion, About Time! Dam is a young, attractive, productive 29F granddaughter with a 108 WWR. Breed improver for 12 of 16 categories. Top 10% for Milk, M&G, and Fat. Top 15% for REA and CHB. He is dehorned and was a twin. Thus bull came from our friends at Ridgeview Farms in Michigan. Could be used on heifers.				BW	68
		WW	719	YW	983



LOT 75

9173 ~ DAM OF
LOT 75



76 GOBLE OHR TRUSTED 103A

BJG 103A	1/5/13	POLLED	43357679	BW	4.6
NJW 735 M326 TRUST 100W ET	KCF BENNETT 3008 M326	WW	64	YW	116
SIRE	NJW P606 72N DAYDREAM 735	MILK	24	M&G	56
RVP 122L IT'S A WRAP ET 1107W	REMITALL ONLINE 122L	SC	1.3	REA	.91
DAM	MARJON 29F NAOMI ET 111N	FAT	-.034	MARB	.09
One of the best Trust sons to sell anywhere! He's long, very complete, short marked, attractive and has good depth and muscle. Breed improver for 13 or 16 categories. Top 1% of breed for YW, REA and CHB! Top 10% or better also for WW, M&G SCR, FAT, and BMI. Dam is a deep, stout Online daughter from a 29F cow. Owned with Ridgeview Farms, Michigan. Selling ½ interest, full possession.				BW	88
		WW	724	YW	1040



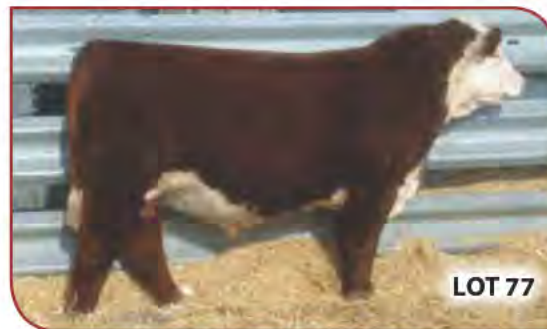
LOT 76

1107W ~ DAM OF
LOT 76



77 JLCS OHR 1230 ATLAS 4R A8

A8	2/4/13	POLLED	43410337	BW	1.9
MSU TCF REVOLUTION 4R	FELTONS LEGEND 242	WW	56	YW	90
SIRE	MSU TCF RACHAEL ET 54N	MILK	25	M&G	53
THM 8703 BEAUTY 1230	THMSTOUT 8703 ET	SC	.7	REA	.67
DAM	JJD BEAUTY 8050	FAT	.020	MARB	.08
Excellent heifer bull that has good muscle, depth, pigment, and plenty of eye appeal! Out of a good first calf heifer and sired by the popular Revolution. Breed improver for 12 of 16 categories and in top 5% for REA and top 15% for M&G and CHB. He came from our good friends at J&L in Ohio. Terms to be announced.				BW	70
		WW	760	YW	1170



LOT 77

1230 ~ DAM OF
LOT 77



78 OHR MOMENTO 79U 22A

OHRR 22A	2/6/13	POLLED	43440402	BW	.8
RJH MOMENTUM H45	3D NO LIMIT 09E	WW	61	YW	89
SIRE	JR 7168 GLORIA C104	MILK	23	M&G	54
OHR REVLOM 10M 79U (DOD)	HA MASTERPIECE M242	SC	1.3	REA	.90
DAM	OHR MATTIE 91F 10M	FAT	-.007	MARB	-.06
Great bull for heifers! Good muscle, pigment and correctness with great data and super pedigree. Dam is a productive, moderate sized, young cow with a 91% BWR and a 109 WWR on 3 calves! Her dam, 10M, is a Dam of Distinction. This dam is loaded with breed giants: Boomer, Governor, and Kodiak. Breed improver for 11 of 16 categories and in top 10% for BW, WW, SCR, REA, and BMI. Selling ½ interest, full possession.				BW	74
		WW	714	YW	1170



LOT 78

79 PERKS OHR 124W BAILOUT 3055

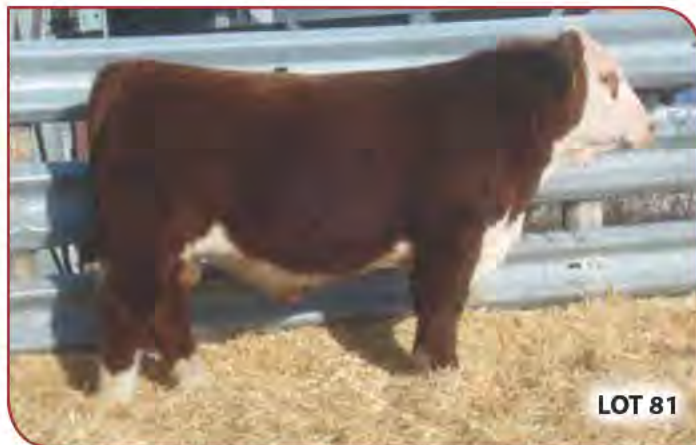
3055	2/12/13	POLLED	43406535	BW	3.4
TH 75J 243R BAILOUT 144U ET				WW	49
SIRE				YW	86
TH SHR 605 57G BISMARCK 243 ET				MILK	26
KB 615 NICKY 75J				M&G	51
TH 24S 45P LORETTA 124W				SC	.6
NJW FHF 9710 TANK 45P				REA	.45
DAM				FAT	-.006
TH 55P W39 LORETTA 24S				MARB	.01
¾ brother to "Right Track", who sold for \$105,000 in the Denver Sale! This bull is powerfully constructed with good muscle, volume, and structure. Dam has a 108 WWR! One of 3 bulls in this sale from our friends at Perks Ranch in IL. Top 25% for Milk, M&G, and REA.					
				BW	88
				WW	720
				YW	1190



LOT 79

81 PERKS OHR X77 MR HEREFORD 3064

3062	2/16/13	POLLED	43406544	BW	4.4
TH 71U 719T MR HEREFORD 11X				WW	56
SIRE				YW	83
TH 122 711 VICTOR 719T				MILK	22
TH 7N 45P RITA 71U				M&G	51
BL RANGETTE 357 X77				SC	.8
WALKER EUROSPORT 745 133 357				REA	.42
DAM				FAT	-.001
BL RANGETTE T14				MARB	.04
Extra performance, pigment, muscle and body mass in the powerful bull. His sire, Mr. Hereford, was widely used on heifers and cows. Top 25% of breed for WW, M&G, REA, and CHB. Dam has a 105 WWR and traces breed legends Endurance and Ranger.					
				BW	85
				WW	779
				YW	1331



LOT 81

80 OHR TRUSTWORTHY 41R 52A

OHR 52A	2/21/13	POLLED	43441750	BW	2.2
NJW 73S M326 TRUST 100W ET				WW	51
SIRE				YW	98
KCF BENNETT 3008 M326				MILK	25
NJW P606 72N DAYDREAM 73S				M&G	50
OHR NIKITA 88G 41R				SC	1.2
VCR EAST KODIAK 506E				REA	.76
DAM				FAT	.012
SALUNGA GEORGIE GIRL				MARB	.15
Complete, shorted marked, well muscled son of the great NJW Trust bull that was National Champion in 2012. Dam is a beautiful Kodiak daughter with a great udder and 99 BWR and 101.3 WWR. Breed improver for 13 of 16 categories and top 10% for YW, SC, and REA. Top 20% for Milk, Marbling, BMI, BII, and CHB. Recommended for heifers.					
				BW	85
				WW	581
				YW	1024



DAM OF LOT 79

82 PERKS OHR 9181 TRUST 3080

3080	2/28/13	POLLED	43406558	BW	1.4
NJW 73S M326 TRUST 100W ET				WW	50
SIRE				YW	91
KCF BENNETT 3008 M326				MILK	23
NJW P606 72N DAYDREAM 73S				M&G	48
LCC EYE LINER 9181				SC	1.1
STAR 68M CARLTON 414R ET				REA	.83
DAM				FAT	-.029
LCC 19D SHARON LYNN 508 ET				MARB	.07
Another Trust son with good muscle shape and very sound structure. Dam has a 96 BWR and 104 WWR with a pedigree including 19D, Keynote and Carla 35J. He's a breed improver for 15 of 16 categories and in top 10% for Calving Eas Maternal, REA, Fat, BMI and CHB. Should be a great heifer bull!					
				BW	70
				WW	701
				YW	1159

83 C&L LOEWEN OHR HONOR 100W 6A

6A	2/25/13	POLLED	43405280	BW	3.8
NJW 73S M326 TRUST 100W ET				WW	62
SIRE				YW	111
KCF BENNETT 3008 M326				MILK	22
NJW P606 72N DAYDREAM 73S				M&G	53
C&L LOEWEN MISS VICTORIA17N29WET				SC	.9
GH NEON 17N				REA	1.08
DAM				FAT	-.030
JJJ VICTORIA 109W 112				MARB	.11
Correct, attractive son of Trust, 2012 National Champion Bull in Denver. A breed improver for 12 of 16 categories. This bull is in the top 1% of all animals in the breed for YW, REA, and CHB Index. Also top 5% for WW and Fat.					
				BW	85
				WW	673
				YW	1124

84 OHR REDFORD 47R 69A

OHRR 69A	2/28/13	HORNED	43440395	BW	4.4
				WW	53
OHR REDEYE 51R 24X				YW	82
SIRE SHF RIB EYE M326 R117				MILK	25
SIRE OHR NIKITA 16G 51R				M&G	51
FJ LADY VALERIE 47R (DOD)				SC	.9
DAM FJ MR CATALYST 11J				REA	.40
DAM FJ VIEW LADY 36H				FAT	.004
Twin to 70A bull and both raised together on their mother until weaning. She is a Dam of Distinction with a 113 WWR. He's a breed improver for 14 of 16 categories. Recommended for use on heifers.					
				MARB	.06
				BW	79
				WW	524
				YW	974

85 OHR RED LINE 47R 70A

OHRR 70A	2/28/13	POLLED	43440411	BW	2.0
				WW	48
OHR REDEYE 51R 24X				YW	72
SIRE SHF RIB EYE M326 R117				MILK	25
SIRE OHR NIKITA 16G 51R				M&G	49
FJ LADY VALERIE 47R (DOD)				SC	.9
DAM FJ MR CATALYST 11J				REA	.40
DAM FJ VIEW LADY 36H				FAT	.004
Twin to 69A bull and both raised by same cow. She is a Dam of Distinction with a 113 WWR. He's a breed improver for 14 of 16 categories and very balanced EPDs. Should work on heifers.					
				MARB	.06
				BW	63
				WW	511
				YW	899



47R ~ DAM OF
LOTS 84 & 85

389 ~ DAM OF
LOT 86



87 OHR PROGRESSIVE 76U 94A

OHRR 94A	3/10/13	POLLED	43440401	BW	5.9
				WW	60
HVH PROGRESS 4L 30S				YW	93
SIRE SHF PROGRESS P20				MILK	19
SIRE HVH GENETIC QUEEN 53H 4L				M&G	49
OHR REVLON 71P 76U				SC	.8
DAM HA MASTERPIECE M242				REA	.44
DAM OHR NIKITA 9831H 71P				FAT	.008
Complete young bull with good thickness and rib depth. Progress worked very well on our Kodiak and high performance cow families. Dam is a steady producer with a great udder and 102 WWR. Breed improver for 12 of 16 categories and top 15% or better for WW, YW, and CHB.					
				MARB	.14
				BW	104
				WW	631
				YW	977

88 OHR REDWOOD 65W 106A

OHRR 106A	3/19/13	POLLED	43440399	BW	4.1
				WW	54
OHR REDEYE 51R 24X				YW	85
SIRE SHF RIB EYE M326 R117				MILK	24
SIRE OHR NIKITA 16G 51R				M&G	50
OHR ROBYN 64L 65W				SC	1.1
DAM MRC JOHNNY CASH 524				REA	.39
DAM HAROLDSON'S 45H CHRISTINA 64L				FAT	.005
One of the youngest bulls in the sale ~ he's dark colored, 100% pigmented, very correct and well muscled. Dam boasts a 108.3 WWR on 3 calves. Granddam, 64L, is a Dam of Distinction and raised our high selling bull last year at 11 years. Breed improver for 11 of 16 categories.					
				MARB	.10
				BW	89
				WW	651
				YW	1125



64L
GRANDDAM OF
LOT 88

16T ~ DAM OF
LOT 89



86 OHR RED WING 38P 93A

93A	3/9/13	SCURRED	43440394	BW	3.2
				WW	48
OHR REDEYE 51R 24X				YW	77
SIRE SHF RIB EYE M326 R117				MILK	21
SIRE OHR NIKITA 16G 51R				M&G	44
REMITALL EFFIE 38P				SC	1.1
DAM REMITALL LANDSLIDE 161L				REA	.47
DAM REMITALL EFFIE 131L				FAT	-.011
Moderate sized, high volume, well muscled young bull from our very attractive and productive Effie cow. A breed improver for 13 of 16 categories and in the top 20% for SC, Fat, REA, BMI and BII.					
				MARB	.06
				BW	83
				WW	622
				YW	1084

89 C&L OHR ADVANTAGE 22S 22A

22A	3/29/13	POLLED	43405286	BW	3.1
				WW	58
C&L ADVANTAGE M326 22S ET				YW	87
SIRE KCF BENNETT 3008 M326				MILK	22
SIRE HH MS ADVANCE 8037H				M&G	52
C&L DCC CATALINA 711 16T (DOD)				SC	1.1
DAM DRF JWR PRINCE VICTOR 711				REA	.56
DAM REMITALL CATALINE ET 150L				FAT	-.009
Good end of March bull with extra depth and muscle. Mother has a great pedigree tracing to Governor and Catalina. She is a Dam of Distinction that we selected last fall from C&L in Wisconsin, along with this bull. A breed improver for 14 of 16 categories and top 10% for WW, REA, Marbling, BMI, BII, and CHB. Should work on heifers!					
				MARB	.19
				BW	82
				WW	667
				YW	1041

Hereford Heifers

90 OHR FAITH 110U 54A

OHR 54A	2/22/13	POLLED	43440389	BW	4.5
PHH 925 COUNTRY 112	PHH PCC KJ 750P BIG COUNTRY934ET			WW	48
SIRE	PHH 547 VICKY 925			YW	80
OHR FAITH 79G 110U	OHR KODIAK D467 75M			MILK	16
DAM	NJW 832W FAITHFUL 79G			M&G	40
Fancy heifer calf that has "the look"! Her sire is a stout, performance bull and with Kodiak and Wrangler on the dam side she should make a great cow.					
				SC	.7
				REA	.47
				FAT	-.012
				MARB	-.02
				BW	83
				WW	517
				YW	897



LOT 90

91 OHR VICTORIA'S WAY R107 101A

OHR 101A	3/13/13	HORNED	43440410	BW	4.4
OHR REDEYE 51R 24X	SHF RIB EYE M326 R117			WW	48
SIRE	OHR NIKITA 16G 51R			YW	79
GHF GA GIRL P608 BEP96 R107	PW VICTOR BOORMER P606			MILK	24
DAM	FPH VICTORIA 48D P96			M&G	48
Moderate, easy keeping heifer from our great herdsire, Redeye, and a very good P606 daughter. Dam has a 104.5 WWR. Breed improver for 10 of 16 categories and top 15% for REA and Marbling. Dehorned.					
				SC	.9
				REA	.55
				FAT	.006
				MARB	.17
				BW	86
				WW	526
				YW	909



LOT 91

R107 ~ DAM OF LOT 91



92 OHR QUEEN BELLE 56W 75A

OHR 75W	3/1/13	POLLED	43440397	BW	6.0
HVH PROGRESS 4L 30S	SHF PROGRESS P20			WW	53
SIRE	HVH GENETIC QUEEN 53H 4L			YW	85
OHR BELLE 13K 56W	REMITALL SILENCER 144S			MILK	20
DAM	HARVIE MISS KOLULA 13K			M&G	46
A very complete heifer with good thickness and performance. Sired by our senior herd sire, Progress 30S, a trait leader for CED, Mature Cow WT, Marbling, CEZ, and CHB. This is the one 30S heifer selling.					
				SC	.6
				REA	.14
				FAT	.006
				MARB	.14
				BW	92
				WW	547
				YW	912

93 GOBLE LACI 303A

BJG 303A	3/1/13	POLLED	43366358	BW	4.8
TH 122 71I VICTOR 520 ET	DRF JWR PRINCE VICTOR 71I			WW	63
SIRE	KBCR 19D DOMINETTE 122			YW	101
GRASSY RUN RACHEL 1012	MSU TCF REVOLUTION 4R			MILK	28
DAM	GRASSY 837S RACHEL G33			M&G	59
Complete, moderate heifer sired by a full brother to 719T. Dam is a first calf heifer by the popular Revolution 4R. She's in the top 10% of breed for WW, YW, Milk, M&G, REA and CHB.					
				SC	.9
				REA	.56
				FAT	.001
				MARB	.04
				BW	89
				WW	549
				YW	810



1012 ~ DAM OF LOT 93

212L GRANDDAM OF LOT 94

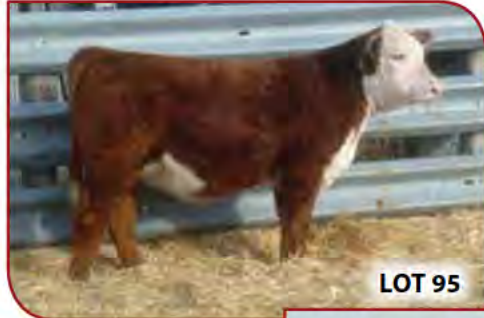


94 OHR LADONNA 50Y 125A

OHR 125A	4/20/13	POLLED	43441534	BW	2.2
OHR EXTRA MOMENTUM 65W 32Y	RJH MOMENTUM H45			WW	48
SIRE	OHR ROBYN 64L 65W			YW	66
OHR LADONNA P606 50Y	PW VICTOR BOORMER P606			MILK	25
DAM	LAKE LADONNA 212L			M&G	49
Fancy, young heifer that goes back to breed giants P606 and Kodiak on dam's side. A breed improver for 10 of 16 categories and in top 5% of breed for REA.					
				SC	1.0
				REA	.63
				FAT	.037
				MARB	.11
				BW	80
				WW	592
				YW	891

95 OHR VINDI 52X 126A

OHR 126A	4/25/13	POLLED	43441531	BW	5.6
PHH 925 COUNTRY 112	PHH PCC KJ 750P BIG COUNTRY 934ET			WW	55
SIRE	PHH 547 VICKY 925			YW	88
OHR VINDI 116G 52X	SHF RIB EYE M326 R117			MILK	18
DAM	MOHICAN VINDI 116G (DOD)			M&G	46
				SC	.8
				REA	.47
				FAT	-.030
				MARB	-.03
				BW	90
				WW	615
				YW	954



LOT 95

116G ~ GRANDDAM
OF LOT 95



96 OHR MATTIE MAY 59X 129A

OHR 129A	5/16/13	POLLED	43441532	BW	2.2
PHH 925 COUNTRY 112	PHH PCC KJ 750P BIG COUNTRY 934ET			WW	44
SIRE	PHH 547 VICKY 925			YW	73
OHR MATTIE 10M 59X	KCF BENNETT 3008 M326			MILK	19
DAM	OHR MATTIE 91E 10M (DOD)			M&G	41
				SC	.9
				REA	.47
				FAT	-.017
				MARB	.02
				BW	70
				WW	683
				YW	1073



LOT 96

10M ~ GRANDDAM
OF LOT 96



97 OHR REVLON QUEEN 95U 200A

OHR 200A	4/23/13	POLLED	43440408	BW	3.2
HVH PROGRESS 4L 30S	SHF PROGRESS P20			WW	51
SIRE	HVH GENETIC QUEEN 53H 4L			YW	80
OHR REVLON 50P 95U	HA MASTERPIECE M242			MILK	21
DAM	OHR NIKITA 69F 50P			M&G	46
				SC	.9
				REA	.38
				FAT	.022
				MARB	.16
				BW	83
				WW	510
				YW	838

Fancy end of April heifer with good muscle and volume in a moderate, correct package. Raised with no creep. Very balance EPD's.

98 OHR MADONNA 27Y 50A

OHR 50A	2/18/13	POLLED	43441535	BW	3.2
OHR EXTRA MOMENTUM 65W 32Y	RJH MOMENTUM H45			WW	51
SIRE	OHR ROBYN 64L 65W			YW	80
HAROLDSON'S MADONNA 45P 27Y	NJW FHF 9710 TANK 45P			MILK	21
DAM	HAROLDSON'S WLC MADONNA ET 8N			M&G	46
				SC	.9
				REA	.38
				FAT	.022
				MARB	.16
				BW	83
				WW	510
				YW	838

Very good, attractive heifer with very good EPDs and a great pedigree! Dam is a 2 year old Tank daughter that traces to the great Mira cow from Haroldsons. Sire's granddam and great granddam are Dams of Distinction! She is a breed improver for 13 or 16 categories and in the top 10% for WW, M&G, REA and CHB.



LOT 98



Steve Wolff
Wolff Cattle Services
701-710-1574
"Dr. Hoss of the Herefords!"

Hereford Bred Females

99 GRASSY RUN GEORGIA GIRL 1117

OHRR 1117	4/26/11	POLLED	43235394	BW	4.3
				WW	46
				YW	70
CMF SAH 676M ON TARGET 837S				MILK	30
CMF 21E LOGAN 544K				M&G	53
SIRE CMF 498J FOREVER RACHEL 676M				SC	0.3
GHF GA GIRL P606 BEP96 R107				REA	.34
PW VICTOR BOOMER P606				FAT	.023
DAM FPH VICTORIA 48D P96				MARB	.15
				BW	NA
				WW	NA
				YW	NA

Daughter of our great P606 cow, R107, who has a WWR of 104.5 in production. Exposed to OHR REDEYE 51R 24X: 5/23 to 9/2. Ultrasound 5/26 = 40 days.



R107 ~ DAM OF LOT 99

116G ~ DAM OF LOT 100



102 OHR EFFIE 23T 131X

OHRR 131X	4/14/10	POLLED	43119446	BW	5.2
				WW	52
				YW	91
MRC JOHNNY CASH 524				MILK	23
REMITALL JONATHON 73J				M&G	49
SIRE RU 8G ROBYN 27L (DOD)				SC	1.0
REMITALL EFFIE 23T				REA	.26
DAM REMITALL PATRIOT ET 13P				FAT	.009
				MARB	.14
				BW	NA
				WW	NA
				YW	NA

Good young cow in her prime! Dam's WWR production 105. Sire has 11 daughters at 102 WWR on their calves. Exposed to OHR DKM MR SEEKER 928 1259: 5/23 to 6/28 Exposed to HVH PROGRESS 4L 30S: 6/28 to 9/2 Ultrasound 7/26 showed less than 28 days. PG 11/15 @ 4 months. Safe to second service.



LOT 102 AT 8 MONTHS

38P ~ GRANDDAM OF LOT 102



100 OHR VINDI 116G 52X

OHRR 52X	2/26/10	POLLED	43119413	BW	3.4
				WW	51
				YW	80
SHF RIB EYE M326 R117				MILK	19
KCF BENNETT 3008 M326				M&G	44
SIRE HVH MISS HUDSON 83K 8M				SC	1.1
MOHICAN VINDI 116G (DOD)				REA	.34
MOHICAN DAYTA 1ET				FAT	-.016
DAM MOHICAN VINDI M78C				MARB	.08
				BW	NA
				WW	NA
				YW	NA

Very good, young daughter of the popular Rib Eye and from our great Dam of Distinction, 116G. Exposed to OHR DKM MR SEEKER 908 1259: 5/23 to 6/28 Exposed to HVH PROGRESS 4L 30S: 6/28 to 9/2 Ultrasound 7/26 = 40 days

103 OHR BELLE 13K 56W

OHRR 56W	2/21/09	POLLED	43052608	BW	6.6
				WW	48
				YW	80
REMITALL SILENCER 144S				MILK	18
REMITALL LAGRD POUNDER ET 204P				M&G	42
SIRE REMITALL BELLE 43L				SC	0.6
HARVIE MISS KOLULA 13K				REA	.14
HAVIE DEYNOTE 61D				FAT	-.023
DAM HARVIE MISS HOUSTON 36H				MARB	-.01
				BW	NA
				WW	NA
				YW	NA

Dam has BWR 97 and WWR of 116 in production! She was our pick in the Remitall Dispersal. 21 Silencer daughters ratioed 102% in production. Exposed to HVH PROGRESS 4L 30S: 5/23 to 9/2 Ultrasound 7/26 @ 28 days. PG 11/15 @ 4 months.

101 OHR MATTIE 10M 59X

OHRR 59X	2/28/10	POLLED	43119414	BW	3.2
				WW	46
				YW	80
KCF BENNETT 3008 M326				MILK	20
RRH MR FELT 3008				M&G	43
SIRE KCF MISS 459 F284				SC	1.5
OHR MATTIE 91F 10M (DOD)				REA	.33
VCR EAST KODIAK 506E				FAT	.010
DAM TA-BAR-E-L-740C REBA 91F				MARB	.16
				BW	NA
				WW	NA
				YW	NA

Nice uddered daughter of the widely used M326. Mother is Dam of Distinction with 93.2 BWR and 107.5 WWR in production. Exposed to HVH Progress 4I 30S: 5/23 to 9/2 Ultrasound 7/26: Showed 48 days pregnant.



13K ~ DAM OF LOT 103

52T MATERNAL BROTHER OF LOT 103



104**REMITALL SALLY 354U**

354U	5/19/08	POLLED	42962028	BW	2.9
REMITALL FIRST CLASS ET 113R				WW	40
SIRE				YW	69
REMITALL OLYMPIAN ET 262L				MILK	15
REMITALL BELLE 92L				M&G	35
REMITALL SALLY 53M				SC	0.7
REMITALL EMBRACER 8E				REA	.29
DAM				FAT	.018
REMITALL SALLY 131K				MARB	.14
Dam and Granddam were Canadian National Champion females as cow/calf pair.					
Exposed to OHR DKM 432X MR ATTRACTION 1205 (Lot 70): 7/29 to 11/1					
				BW	NA
				WW	NA
				YW	NA

**53M ~ DAM OF LOT 104****131K ~ GRANDDAM OF LOT 104****107****OHR FAITH 79G 110U**

OHR 110U	11/2/08	POLLED	42973685	BW	4.2
OHR KODIAK D467 75M				WW	47
SIRE				YW	81
VCR EAST KODIAK 506E				MILK	14
HUSO 114 GEM D467				M&G	37
NJW 832W FAITHFUL 79G				SC	1.0
CIRCLE-D WRANGLER 832W				REA	.34
DAM				FAT	.020
FCF DELIVERY QUEEN 264				MARB	.10
Powerful genetics in a moderate package.					
Exposed to OHR DKM MR SEEKER 928 1259: 5/23 to 6/28					
Exposed to HVH PROGRESS 4L 30S: 6/28 to 9/2					
Ultrasound showed 48 days pregnant on 7/26					
				BW	NA
				WW	NA
				YW	NA

**75M ~ SIRE OF LOTS 105-106****64L ~ DAM OF LOTS 107-108****105****OHR REVLON 50P 95U**

OHR 95U	4/1/08	POLLED	42931330	BW	4.5
HA MASTERPIECE M242				WW	50
SIRE				YW	81
REMITALL GOVERNOR 236G				MILK	20
HA REMTONE 706G				M&G	45
OHR NIKITA 69F 50P				SC	0.9
VCR EAST KODIAK 506E				REA	.62
DAM				FAT	.010
OHR QUESTIVA 69P (DOD)				MARB	.03
Powerful cow. Dam's WWR 102.5. Granddam is Dam of Distinction. 35 Masterpiece daughters ratio 102.5 in production.					
Exposed to OHR DKM 432X MR ATTRACTION 1205 (Lot 70): 7/29 to 11/1					
				BW	NA
				WW	NA
				YW	NA

108**OHR CHRISTINA 64L 93Y**

OHR 93Y	3/16/11	POLLED	43221831	BW	6.3
OHR KODIAK D467 75M				WW	60
SIRE				YW	96
VCR EAST KODIAK 506E				MILK	20
HUSO 114 GEM D467				M&G	50
HAROLDSON'S 45H CHRISTINA 64L (DOD)				SC	0.9
LLL NUFF SAID 45H				REA	.54
DAM				FAT	.026
WALPOLE LUCKY LADY 2E				MARB	-.13
Mother is Dam of Distinction with a 109 WWR!					
Exposed to OHR DKM 432X MR ATTRACTION 1205 (Lot 70): 7/29 to 11/1					
				BW	NA
				WW	NA
				YW	NA

106**OHR FAITH 110U 66Y**

OHR 66Y	2/28/11	POLLED	43221750	BW	3.1
OHR KNIGHT 87T				WW	58
SIRE				YW	86
RF KNIGHT 3238 5T				MILK	19
OHR SUNNY 415E 87T ET				M&G	48
OHR FAITH 79G 110U				SC	1.1
OHR KODIAK D467 75M				REA	.41
DAM				FAT	.024
NJW 832W FAITHFUL 79G				MARB	.04
Pedigree includes breed greats: Kodiak, Wrangler, and Boomer.					
Exposed to OHR DKM MR SEEKER 928 1259: 5/23 to 6/28					
Exposed to HVH PROGRESS 4L 30S: 6/28 to 9/2					
7/26 Ultrasound showed no pregnancy 28 days and under.					
11/15 pregnancy tested. Safe to second exposure.					
				BW	NA
				WW	NA
				YW	NA

109**OHR CHRISTINA 64L 49X**

OHR 49X	2/26/10	POLLED	43119412	BW	3.0
OHR KODIAK D467 75M				WW	46
SIRE				YW	73
VCR EAST KODIAK 506E				MILK	20
HUSO 114 GEM D467				M&G	43
HAROLDSON'S 45H CHRISTINA 64L (DOD)				SC	0.8
LLL NUFF SAID 45H				REA	.45
DAM				FAT	.022
WALPOLE LUCKY LADY 2E				MARB	-.09
Full sister to 93Y. Dam raised our high seller last year and is Dam of Distinction with 109 WWR.					
Exposed to OHR DKM 432X MR ATTRACTION 1205 (Lot 70): 7/29 to 11/1					
				BW	NA
				WW	NA
				YW	NA

Flushes Available

STAR MKS BELLE SSF 117L

117L	3/5/01	POLLED	42142848	BW	5.7
NJW 1Y WANGLER 19D	CIRCLE-D WRANGLER 832W			WW	52
SIRE	NJW FROSTY 1Y			YW	92
STAR MKS BELLE 254G	BIG T 75A MERIDIAN D61			MILK	21
DAM	BOOT HILL MS RIVAL 41X			M&G	46
				SC	0.8
				REA	.50
				FAT	.012
				MARB	.05
				BW	NA
				WW	NA
				YW	NA



STAR MKS BELLE SSF 117L

One of the most powerful daughters of legendary 19D that you could find anywhere! She's a heavy milker with great udder quality and works very well on a variety of sires. Contact us if you are interested in flushing her to a bull of your choice. She is at BovaGen in SD and ready to flush.

Sale Notes



Your sale catalogs are a reflection of **YOUR LIVESTOCK** so don't let just anyone prepare your catalogs. *Get the best!*


KRK Dezynz
 "When experience matters!"

Kleda Rae Kuehne
 kleda@krkdezynz.com
 701-845-4317

This bull produces better mamas, not headaches

There's no mama like a Hereford-sired mama. Net income of \$51 more per cow per year and a 7% advantage in conception rate, compared to straight Angus females.* All this from a bull that is known for its fertility and easy-going nature. Hereford bulls — better mamas and no headaches.

Hereford — gentle bulls making black better.



P.O. Box 014059
 Kansas City, MO 64101
 816.842.3757
www.hereford.org

Our bulls are developed on VitaFerm to ensure a healthier, more fertile bull with less problems!

VITAFERM®

with the AMAFERM® advantage

To order contact Dorothy Orts - 701-840-1984

Video of the entire sale offering will be available in early February. Request a DVD or see it at www.olsonredpower.com

BULL MORTALITY *and* LOSS OF USE

INSURANCE COVERAGE



Town & Country
 Insurance Agency, LLC

Dennis Erdmann
 815 25th St S, Suite 2
 Fargo, ND 58103
 701-789-0970
derdmann@tandcinsurance.org



Red Power Bull Sale

16068 24th St SE
Argusville, ND 58005

Return Service Requested

PRSTD 1ST CLASS
U.S. POSTAGE
PAID
FARGO ND
PERMIT #315



*"The Regions Red Angus
and Polled Hereford
Performance Leader!"*

