

Olson's **Red Power**

Performance Bull Sale

At the Ranch ~ Argusville, ND ~ Noon Lunch ~ 1:00 Sale

~ Thursday ~
February 18, 2010

*“Supreme genetics
for today's beef industry!”*



*OHRR 413R Red Vision 85U
Supreme Champion Bull ~ 2009 ND Winter Show
2009 Red Power high seller*

Selling many brothers to this powerful bull!

75 Lots Selling

45 - Red Angus Bulls

(37 Yearlings, 5 Falls & 3 Coming 2-Year Olds)

11 - Polled Hereford Bulls

(7 Yearlings, 1 Fall & 3 Coming 2-Year-Olds)

10 - Polled Hereford Heifers

9 - Red Angus Heifers



~ General Information ~

Sale Time: 1:00 CST, Thursday, February 18, 2010. Complimentary noon lunch. There will be refreshments and food later in the afternoon on Wednesday, February 17.

Location: At the ranch. From Argusville on I-29: 7 West on Cass #4, 1 North & ½ West. From Casselton @194: 10 North on State Hwy 18, 5 East on Cass #4, 1 North & ½ East.

Motels: Holiday Inn, on Interstate 29 in Fargo <20 minutes to ranch> 701.282.2700. Governors Inn, on Interstate 94 at Casselton <20 minutes to ranch > 888.847.4524. Fargo has many nationwide hotels 20 minutes from OHR.

Airline Service: Northwest and United both serve Fargo's Hector International Airport.

Delivery: Free delivery to central points up to 300 miles and further distances at cost. Take your bull home sale day and get \$50 off.

Free Wintering: We keep your bull until April 1st on purchases of \$2500 or more. We recommend insurance for those animals not leaving on sale day.

Guarantee: All cattle are fully guaranteed according to the standards set by the American Red Angus and American Hereford Associations. 2009 born bulls have been fertility tested. We will test yearlings prior to delivery on 4/1. We recommend you test yearling taken home on sale day.

Terms: Terms of the sale are cash or check. Settlement must be made immediately following the sale before animals can be loaded or delivered. Every animal sells to the highest bidder. Any correction from the auction block takes priority over printed material in the catalog. We will be retaining a semen interest in some of the bulls selling.

Liability: All attending the sale do so at their own risk. OHR assumes no responsibility for accident or injury.

EPD's: All EPD's are current as of January 20, 2010. As yearling weights, carcass ultrasound and scrotal measurements are taken the EPD's may change some by sale day. Registration numbers are provided so you can research animals further at breed websites: www.redangus.org or www.hereford.org.

Cattle on Display: All sale cattle are at the ranch and we will invite you to stop prior to the sale to look them over and visit with us. Many of the mothers and sires will be nearby also. Sale cattle will be available for viewing in their display pens the afternoon of Wed. February 18 and again Thursday morning until the sale starts.

Herd Health: All bulls will be tested for BVD. Our herd is Johnes Free. All sale cattle were vaccinated and boosted this fall with Bovi Shield 5 and Ultra One Shot 7 and treated again with Ivermectin pour on in December. Vet work by Dr. Peterson and Casselton Vet Service - 800-216-9985.

Supplement Sheet: More information will be available upon request on week prior to the sale and available sale day, including: Ribeye, back fat, marbling, pelvic area and scrotal measurements. Current EPD's and weights are provided in the catalog. We hope to provide you with the most accurate information possible so when you see the cattle you can make the best selection for your program.

Mail and Phone Bids: Bidders unable to make the sale may contact the Olsons or a staff member to assist in the bidding process. Cell phone numbers listed below.

The Olsons - Cell Phones

Edward.....701-238-3601
Carl.....701-361-0684
Jeanne.....701-866-5779
Craig.....701-367-6704
Caryn.....701-367-4434

Sale day phone ~ 701-484-5779

Sale Staff - Cell Phones

Kyle Gilchrist, Auctioneer641-919-1077
Clint Berry, Red Angus Assn. Rep.....417-844-1009
Kris Peterson, Cattle Business Weekly.....701-339-0305
Levi Landers, AHA.....308-730-1396
Terry Robinson, Farm & Ranch Guide.....701-471-5153
Bryan Gill, Pifer's Livestock Marketing.....701-730-0134
Marissa Mrozinski, Live Auctions.tv.....605-651-4500

View Sale Broadcast Online

Real-time bidding is available via the Internet for this sale. Live audio and video will allow buyers to bid on animals just as if they were present at the sale. Buyer account must be created prior to the sale. Please visit www.LiveAuctions.tv to create an account and request a buyer number. For more information, contact Brad Fahrmeier at (816) 392-9241 or Bfahrmeier@aol.com.

LiveAuctions.TV

Dear Cattlemen,

Welcome to the Red Power Performance Tested Bull Sale on Thursday, February 18. The bulls are an impressive group again this year with the performance, muscle and genetic makeup of one of our best groups ever. They have been performing well on test and we are excited to see the data as it comes in.

The 2010 sale will be held in our heated sale facility at the ranch; 7 West, 1 North and ½ West of Argusville. Here you will have the opportunity to see the bulls in their "natural" environment. Many of the mothers and our herdsires will be nearby also. The bulls should stay healthier without the extra stress of going to a sale barn and the additional hauling, adjustment period. We have had a lot of positive comments about this change and hope it will help us to better serve you and the cattle we will be offering.

This year we have an excellent group of performance packed yearlings loaded with thickness, length, and volume and are backed by great carcass & maternal bloodlines. We also have a few fall born and coming 2-year-olds in both Red Angus and Hereford. Our cattle are selected for a balance of traits with performance as the priority. Many of the bulls will work on heifers.

All cattle are at OHR and can be viewed here prior to the sale. We welcome you to come and take a look ahead of the sale. We are just 20 minutes NW of Fargo with some of the region's best dining and shopping opportunities.

We are continuing to collect data on the sale cattle and will have that available to you prior to the sale also. All bulls in the sale will be tested for BVD and our herd is Johnes Free. Again, we will be offering a \$50 discount if you take your bulls on sale day or we will keep your bulls until April 1st. We plan to have a DVD available first week of February including all saleanimals.

Our family has been in the registered cattle business since 1936 and our commitment to the cattle industry has never been stronger. We are here to serve you! Contact us if you have questions or need more information prior to the sale. We invite you to be with us on February 18th.

Sincerely,
The Olsons



Olson Family at Craig & Laura's Wedding - August 28, 2009

The Olsons (clockwise from left): Caryn, Laura, Craig, Jeanne, Edward, Carl & Casey

RED OHR ANGUS  **Polled Herefords**
"We Breed Excitement"

The Olsons
Edward, Jeanne, Carl, Craig and Caryn
16068 24 St. S.E. ■ Argusville, ND 58005
Email: olsoncandc@aol.com

Phone/Fax: (701) 484-5779
Ed's cellular: (701) 238-3601
Carl's cellular: (701) 361-0684

www.ohrredangus.com



~ Mulberry's Full Brother ~

1

MN-DAK SIR MULBERRY II

912 2/2/2009 100% 1A 1304681

RED Compass Mulberry 449M

RED HR Rambo ET 91K

Sire:

RED Brylor Miss Roc 20H

RED DUS Fayette 8G

SILVEIRAS Redford

Dam:

RED Mc Dougall Fayette 59A

BW	0.7
WW	36
YW	66
MILK	22
TM	40
STAY	5
MARB	NA
REA	NA
FAT	NA
BW	68
WW	825
YW	1225

Sir Mulberry resulted from the purchase of embryos by four breeders. At this stage he resembles his famous brother quite a lot - he is thick, full of muscle with length of body, extra rib, all in a moderate eye-appealing package. It appears that he will sire calves much like those of his more well known sibling. The owners will be selling an interest and retaining part for our own use. Details sale week.

Owners:

OHR, Argusville, ND

Kemen Red Angus - Madison, MN

Gill Red Angus - Timberlake, SD

Reed Stranberg - MN



Lot 1



Lot 1's Full Brother

2010 Spring Red Angus Breed EPD averages - (Non Parent)

BW	WW	YW	Milk	TM	Stay	Marb	REA	Fat
0	31	58	17	33	9	.08	.08	0



~ 2009 Bulls ~

2

OHRR DAKOTA SAKIC 63R-1W

OHRR 1W 1/21/2009 100% 1A 1339936
RED Six Mile Sactic 832S RED Six Mile Aviator 217P

Sire: RED Six Mile Siera 157P

OHRR 91L Copper Moonbeam 63R OHRR Dakota Copper 29K

Dam: OHRR 70J Moonbeam 91L

Wow, here's the genuine article, 1W has it all. Out of one of the hottest sires, great young dam (by Dak. Copper) with superior EPD's, and very impressive production records. Herd Bull Elite! Retaining 1/2 interest.

BW	0.7
WW	40
YW	68
MILK	21
TM	41
STAY	6
MARB	-.14
REA	-.21
FAT	.00
BW	78
WW	771
YW	1202



Lot 2

3

OHRR GILCHRIST REVELER W904

STRG W904 1/24/2009 100% 1A 1301188
BROWN Revelation P7021 BFCK Cherokee CNYN 4912

Sire: BROWN Ms Vicila M7799

LCF LIN 015T OLC Echeta Rob R73

Dam: OLC LIN P182

A super bull here in terms of phenotype and performance. His dam has outdone herself on her first calf - moderate, feminine cow, with a great udder and lots of milk. This boy will produce it all in his offspring. Every number is impressive. Herd bull here. Retaining an interest - terms sale day.

BW	3.0
WW	47
YW	86
MILK	20
TM	43
STAY	11
MARB	.22
REA	.40
FAT	.02
BW	94
WW	825
YW	1187



Lot 3



4**OHRR DAK RAMBLER 19H-9W**

OHRR 9W	1/29/2009	98.1% 1B	1339904
OHRR Dakota Rambler 75R	OHRR Dakota Copper 29K		
Sire:	OHRR Ms Scarlett 10H		
OHRR Macs Lela 19H	RBRTS McIntosh II 344		
Dam:	LELAND Rimtop 416-120B		

BW	-6.7
WW	10
YW	26
MILK	17
TM	22
STAY	5
MARB	-.06
REA	.17
FAT	.00
BW	42
WW	633
YW	1142

Sure fire heifer bull - BW 42 to AAWW 633 - Not many cows will do this. Dam (age 13) looks and produces like a young one. Your heifers will be glad you bought this one.

5**OHRR SUPER LANTRY 42T-10W**

OHRR 10W	1/31/2009	100% 1A	1339964
SJRA 508 Lantry 734	BHR Copper D 508B		
Sire:	SJRA V029 Glory		
OHRR 60P Sweet Sharee 42T	4L Advantage R9N		
Dam:	OHRR 2M Meta Sharee 60P		

BW	1.1
WW	37
YW	72
MILK	24
TM	43
STAY	7
MARB	.10
REA	.18
FAT	-.01
BW	76
WW	792
YW	1187

Another superior effort from 2 year old dam (MGD is super donor cow here - 2M). EPD's are A+ as are production numbers. Paternal grand sire is Dak. Copper 29K. Excellent Bull. Dam's MPPA: 101

**Lot 5****6****OHRR CHOICE MACK 63T-19W**

OHRR 19W	2/5/2009	100% 1A	1339967
OHRR Dakota Mack 203T	RBRTS McIntosh II 344		
Sire:	MESSMER Ophelia 9502		
OHRR 75H Choice Vanna 63T	4L Advantage R9N		
Dam:	RED Howe Ms Choice 75H		

BW	2.7
WW	35
YW	58
MILK	15
TM	33
STAY	8
MARB	NA
REA	NA
FAT	NA
BW	66
WW	672
YW	1133

Great older genetics in this good bull. Sire is out of Premier herd bull McIntosh 344 and damn of 29K. Dam is a great 2 year old. Note B to weaning!



7**OHRR TRACKER II 25R-13W****OHRR 13W 2/4/2009 100% 1A 1339933****WR Mr. Red Dawg 5335**

BUF CRK Valentino N031

Sire:

TMS Ms Fortune 114

OHRR 42L Copper Honey 25R

OHRR Dakota Copper 29K

Dam:

OHRR Macs Honey 42L

Herd bull here! A full sibling to '09 second top seller "Tracker" at \$7500 for 3/4 interest. He's now at James River Farms in Missouri where they're more than a little pleased with him. Check out his first calf sale day! 13W is long and straight with a big hip, great numbers and super-dam. (MPPA 105)

BW	0.6
WW	43
YW	79
MILK	20
TM	41
STAY	8
MARB	-.09
REA	.25
FAT	.00
BW	78
WW	819
YW	1269

**Lot 7****Lot 7's Dam - >****8****OHRR COPPER CANYON 0706-25W****OHRR 25W 2/7/2009 100% 1A 1339960****OHRR 38H Red Canyon 106T**

SRR Red Canyon 213

Sire:

RED Howe Ms Flame 38H

RRAS Betsy 0706

OHRR Dakota Copper 29K

Dam:

LAZY S Miss 86

More good news - and again from an awesome 2 year old (by 29K). Sired by 213/38H son - very solid genetics. Note wts. 78 to 756!

BW	2.1
WW	34
YW	59
MILK	17
TM	34
STAY	8
MARB	NA
REA	NA
FAT	NA
BW	78
WW	756
YW	1233

**Lot 8**

9**OHRR ADV RAMBLER 1R-26W****OHRR 26W 2/9/2009 100% 1A 1339930****OHRR 10H Dakota Rambler 75R** OHRR Dakota Copper 29K

Sire: OHRR Ms Scarlett 10H

OHRR 12M Advanna Fayet 1R 4L Advantage R9N

Dam: OHRR 4K-Ultra Fayet 12M

Another well-bred young bull. Two of the great bulls we've used and super cow 10H. Sold in our '07 cow sale to Six Mile Red Angus in SASK @ \$17,500. Great pedigree - great numbers!

BW	2.0
WW	28
YW	54
MILK	21
TM	35
STAY	6
MARB	-.06
REA	.06
FAT	.00
BW	83
WW	704
YW	1244

10**OHRR A709 LANDSLIDE 49S-30W****OHRR 30W 2/10/2009 100% 1A 11339950****OHRR 107J Landslide 113R** PIE Avalanche 381

Sire: SHHM Annabelle 107J

OHRR 112H Advance Dyna 49S RBJA Advance A709

Dam: RED Howe Ms Kuruba 112H

First Landslide son in sale - 810 AWW from a 2nd calver (MPPA: 102). Grand damn's 107J and 112H - two for the best we've ever owned at OHR. We love this pedigree. Help yourself to power bull!

BW	3.2
WW	42
YW	76
MILK	17
TM	38
STAY	8
MARB	-.02
REA	.16
FAT	-.01
BW	84
WW	810
YW	1292

**Lot 10****11****OHRR DAK RAMBLER 13K-31W****OHRR 31W 2/10/2009 100% 1A 1339910****OHRR Dakota Rambler 75R** OHRR Dakota Copper 29K

Sire: OHRR Ms Scarlett 10H

OHRR 30H Summer 13K OHRR 096 Cub Cadet 30H

Dam: OHRR 4039 Summer 23H

Another solid 75 R bull out of a 9 year old dam that has produced (2 Santa Sale females = 2800 to Forgey's in MO. Grand dam sold 5800 bull in '05 sale. Dam MPPA: 103

BW	1.0
WW	23
YW	45
MILK	21
TM	32
STAY	7
MARB	.04
REA	.11
FAT	-.01
BW	82
WW	692
YW	1248



12**OHRR CANYON DAWG 81R-35W**

OHRR 35W 2/13/2009 100% 1A 1339943

WR Mr. Red Dawg 5335

BUF CRK Valentino N031

Sire:

TMAS Ms Fortune 114

OHRR RC Lady Ophelia 81N

SRR Red Canyon 213

Dam:

MESSMER Ophelia 9502

Red Dawg sire of top sellers in '09 and top sellers in Gill sale '09. Extra pounds, thickness and muscle. At yearling, Red Dawg had the largest rib eye ever recorded in RA breed at 20.3. Great numbers. (Dam MPPA: 103)

BW	3.1
WW	48
YW	87
MILK	20
TM	43
STAY	8
MARB	-.01
REA	.34
FAT	.00
BW	63
WW	735
YW	1196

13**OHRR RED CANYON 12M-37W**

OHRR 37W 2/13/2009 100% 1A 1339917

SRR Red Canyon 213

LCHMN Grand Canyon 1244G

Sire:

BLUE Ridge Kima 950

OHRR 4k-Ultra Fayet 12M

GLACIER Explorer 740

Dam:

OHRR 50H Ultra Cub 4K

One of the last sons of 213 - out of explorer 740 daughter. Maternal/plus carcass in this pedigree - great EPD's and production. Check birth to weaning. Dam's MPPA: 101. MGD 104

BW	0.6
WW	24
YW	50
MILK	24
TM	36
STAY	8
MARB	.15
REA	-.02
FAT	.01
BW	83
WW	679
YW	1204

14**OHRR DONE DEAL 513-43W**

OHRR 43W 2/15/2009 100% 1A 1339958

PIE Get R Done 684

PIE Chicawa 366

Sire:

PIE Red Ruby 4094

FLW Ruby Top 513

GILCHRIST Coyote B225

Dam:

FLW Red ZeeZee Top 324

Outcross pedigree here. 513 is super dam and 43W is one of the top bulls that will sell anywhere this year. First calf, beautiful cow, lots of milk phenotypically ideal bull with all the right numbers. Herd sire alert! Dam's MPPA: 104. Retain 1/2 semen interest.

BW	2.1
WW	45
YW	75
MILK	21
TM	44
STAY	9
MARB	.03
REA	.24
FAT	-.01
BW	80
WW	865
YW	1241

**Lot 14**

15**OHRR SV LANDSLIDE 413R-44W**

OHRR 44W 2/16/2009 100% 1A 1339924

OHRR 107J Landslide 113R

PIE Avalanche 381

Sire:

SHHM Annabelle 107J

Ms Sweet Vision of 4L 413R

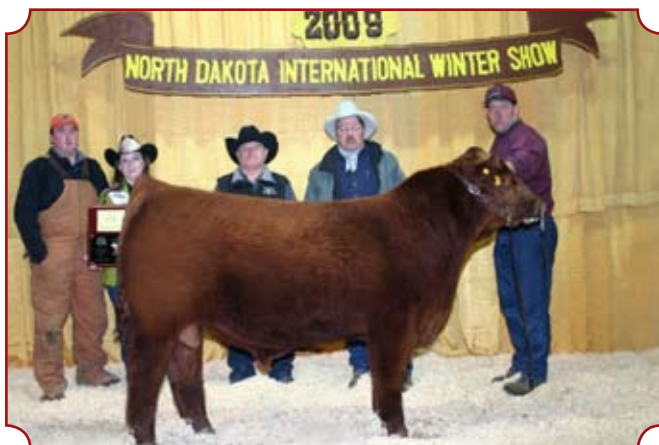
4L Super Vision R2292

Dam:

Ms Advancer of 4L RM23

Outstanding bull from young dam of '09 Red Power Sale's top bull t \$10,000 for 1/2 interest to Mr. Virgil Belflower, GA. He was Supreme Champion bull at the 2009 ND Winter Show. 44W is out of super bull 113R - If your program demands the best, he is right here! Dam's MPPA: 104

BW	1.8
WW	36
YW	72
MILK	22
TM	40
STAY	7
MARB	-.02
REA	.41
FAT	.01
BW	81
WW	761
YW	1291

**Lot 15****Lot 15's Dam ->**

Maternal Brother to 44W, last years high seller and Supreme Champion 2009 ND Winter Show.

16**OHRR CHIEF LANTRY 218S-46W**

OHRR 46W 2/16/2009 100% 1A

SJRA 508 Lantry 734

BHR Copper D 508B

Sire:

SJRA V029 Glory

OHRR 9502 Ava Lana 218S

PIE Avalanche

Dam:

MESSMER Ophelia 9502

Great Grandsire is Dakota Copper. Second calf dam is an ET daughter of 29K's dam. Everything's in order here.

BW	1.6
WW	33
YW	65
MILK	17
TM	34
STAY	NA
MARB	NA
REA	NA
FAT	NA
BW	75
WW	671
YW	1199



17**OHRR DAK LANTRY 97S-47W****OHRR 47W 2/17/2009 100% 1A 1339944****SJRA 508 Lantry 734** BHR Copper D 508B

Sire: SJRA V029 Glory

OHRR 15F Scarlet Diva 97S LCC Divide 1435K

Dam: OHRR Ms 925 Scarlett 15F

BW	1.5
WW	37
YW	68
MILK	18
TM	36
STAY	7
MARB	.05
REA	.06
FAT	-.01
BW	78
WW	764
YW	1230

Another Lantry son out of our oldest cow line. Divide on the dam side means excellent maternal. More great production records here.

**Lot 17****18****OHRR RED CANYON 213S-51W****OHRR 51W 2/19/2009 100% 1A 1339953****SRR Red Canyon 213** LCHMN Grand Canyon 1244G

Sire: BLUE Ridge Kima 950

OHRR King Tenn Lass 213S LMAN King Rob 8621

Dam: TENN Copperlass 4034

BW	0.0
WW	24
YW	51
MILK	23
TM	35
STAY	8
MARB	.09
REA	.15
FAT	.02
BW	77
WW	625
YW	1230

One of the last sons of Red Canyon - a great carcass bull. Dam is a first calf ET daughter of King Rob 8621, one of the most used RA bulls in the country. Outcross genetics.

19**OHRR MACS LANDRY 217T-60W****OHRR 60W 2/24/2009 100% 1A****SJRA 508 Lantry 734** BHR Copper D 508B

Sire: SJRA V029 Glory

OHRR 9502 Macs Livia 217T RBRTS McIntosh II 344

Dam: MESSMER Ophelia 9502

BW	0.6
WW	31
YW	58
MILK	19
TM	34
STAY	NA
MARB	NA
REA	NA
FAT	NA
BW	62
WW	721
YW	1166

Lantry son out of ET daughter of two of our best individuals ever: 344 & 9502. Great performance - Low BW.



20 OHRR GR CAN ROB ET 107J-54W

OHRR 54W 2/19/2009 100% 1A Applied
 LCHMN Grand Canyon 1244G BUF CRK CHF 824-1658
 Sire: KRN Reba's Robin

SHHM Annabelle 107J SHHM Robin Hood 117G
 Dam: SHHM Red Rebelle 02E

ET bull out of the great Grand Canyon and our great Annabelle 107J cow. Herd bull prospect would be an asset to any program. We will use this bull AI.

1/2 interest - full possession

BW	1.4
WW	35
YW	66
MILK	27
TM	43
STAY	NA
MARB	NA
REA	NA
FAT	NA
BW	80
WW	736
YW	1365

Dam of Lot 20 & Landslide Sire



21 OHRR RED PAS LANTRY 7124-63W

OHRR 63W 2/16/2009 100% 1A
 SJRA 508 Lantry 734 BHR Copper D 508B
 Sire: SJRA V029 Glory

HLG Miss 3-7124 RED Pas Play 3722
 Dam: HLG Miss Rebel 835

Another very productive 2 year old dam that has done her best on this bull. Lantry calves have been excellent. A beautiful Lantry daughter sold in Santa Sale VI (2009) for \$5000 to Berke's in NE. Registration number pending.

BW	0.6
WW	31
YW	58
MILK	79
TM	34
STAY	NA
MARB	NA
REA	NA
FAT	NA
BW	75
WW	683
YW	1216

22 OHRR RAMS LANDSLIDE 3S-64W

OHRR 64W 2/26/2009 100% 1A
 OHRR 107J Landslide 113R DIE Avalanche 381
 Sire: SHHM Annabelle 107J

OHRR Ms Scarlett 3S Unidentified Sire
 Dam: OHRR Ms Scarlett 10H

Unidentified sire on dam is purebred, but we cannot prove which sire. EPD's based on sire and great grand dam. a very complete bull.

BW	2.8
WW	37
YW	69
MILK	20
TM	38
STAY	NA
MARB	NA
REA	NA
FAT	NA
BW	78
WW	660
YW	NA



23**OHRR RED CANYON 214S-66W****OHRR 66W 3/1/2009 100% 1A 1339954**

SRR Red Canyon 213 LCHMN Grand Canyon 1244G
 Sire: BLUE Ridge Kima 950

OHRR 107J Advanna 214S 4L Advantage R9N
 Dam: SHHM Annabelle 107J

Red Canyon son. Very nice ET 3 year old out of great 107J cow. Super EPD's and production records.

BW	2.2
WW	34
YW	64
MILK	23
TM	40
STAY	8
MARB	.13
REA	.22
FAT	.01
BW	81
WW	690
YW	1135

24**OHRR R9 RED CANYON 102R-68W****OHRR 68W 3/2/2009 100% 1A 1339926**

SRR Red Canyon 213 LCHMN Grand Canyon 1244G
 Sire: BLUE Ridge Kima 950

OHRR 2M Adv. Sharee 102R 4L Advantage R9N
 Dam: OHRR 503 Copper Sharee 2M

Thick, deep, Red Canyon son with awesome EPD's and weights to match. 102R dam (MPPA: 103) is simply the best - goes back to our super cow 2M. 2nd bull \$4250 in '09 sale to David Remick at Robinson. We will use this bull here. Selling 1/2 interest - possession negotiable.

BW	1.9
WW	44
YW	81
MILK	24
TM	46
STAY	8
MARB	.11
REA	.18
FAT	.01
BW	79
WW	869
YW	1372

**Lot 24****Lot 24's Grand Dam - >****25****OHRR TIDAL WAVE 742-70W****OHRR 70W 3/4/2009 100% 1A 1339962**

RED Six Mile Tidal Wave 254T RED Towaw Indeed 104H
 Sire: RED RSL Duchess 914L

L83 Miss Rambler 742 NFIN Finchbull M75
 Dam: RED Mac Miss Rambler 6L

Purchased in dam at Santa Sale - out of Lodoen's \$36,000 bull Six Mile Tidal Wave 254T. Son of rare and popular sire Indeed 104H. Good cow, nice EPD's and weights.

BW	2.1
WW	32
YW	57
MILK	21
TM	37
STAY	9
MARB	0
REA	-.03
FAT	0
BW	82
WW	693
YW	1112



26**OHRR CPR LANDSLIDE 29S-71W**

OHRR 71W 3/4/2009 100% 1A 1339973

OHRR 107J Landslide 113R

PIE Avalanche 381

Sire:

SHHM Annabelle 107J

OHRR 446 Copperlass 67G-29S

OHRR Dakota Copper 29K

Dam:

OHRR 096 Cub Lass 67G

Good solid bull with strong, balanced EPD's and good weights. Dam 29S is out of a "ten" cow that was a real beauty. Paternal GD is also great female. We highly recommend this bull.

BW	2.3
WW	34
YW	63
MILK	20
TM	38
STAY	8
MARB	-.05
REA	.05
FAT	.00
BW	84
WW	748
YW	1172

27**OHRR R9N LANDRY 220S-74W**

OHRR 74W 3/6/2009 100% 1A 1339956

SJRA 508 Lantry 734

BHR Copper D 508B

Sire:

SJRA V029 Glory

OHRR 107J Advanna 220S

4L Advantage R9N

Dam:

SHHM Annabelle 107J

This bull looks good from all angles. Dam is moderate, dark colored, productive and out of our best genetics. EPD's and weights are top-notch. We like this bull a lot. Dam MPPA: 103

BW	0.9
WW	31
YW	61
MILK	25
TM	40
STAY	7
MARB	.07
REA	.22
FAT	-.01
BW	77
WW	726
YW	1176

28**OHRR RED DAWG JAKE K22-79W**

OHRR 79W 3/7/2009 100% 1A 1339909

WR Mr. Red Dawg 5335

BUF CRK Valentino N031

Sire:

TMAS Ms Fortune 114

JACOBSON Margie K22

TASSEL Robin Hood 78E

Dam:

DAHLKE Marjorie 147G

Jake could have been named Mr. Performance! He's a powerhouse out of K22 (MPPA: 105 & MGD 107) - the Super dam. She has a record that rises to the top - every calf has put down the scales and raised the sale average. Jake will be a great investment!

BW	5.3
WW	58
YW	103
MILK	24
TM	53
STAY	7
MARB	-.15
REA	.41
FAT	.01
BW	93
WW	880
YW	1484



Lot 28

Lot 28's Dam - >



29**OHRR RED D CLASSIC 39R-77W**

OHRR 77W 3/7/2009 100% 1A 1339927

BW	8.2
WW	56
YW	91
MILK	15
TM	43
STAY	7
MARB	-.07
REA	.16
FAT	.01
BW	109
WW	793
YW	1344

WR Mr. Red Dawg 5335

BUF CRK Valentino N031

Sire:

TMS Ms Fortune 114

OHRR 5E Dakota Classy 39R

OHRR Dakota Copper 29K

Dam:

OHRR Ms Classy 5E

A great son of Red Dawg out of super 4 year old. Use this bull on mature cows but make note that his parental EPD's are sire - 3.5 and dam 1.7. He's a good one!

**Lot 29****30****OHRR RED CASEY 47N-80W**

OHRR 80W 3/9/2009 100% 1A 1339920

BW	3.6
WW	47
YW	80
MILK	12
TM	35
STAY	7
MARB	-.06
REA	.09
FAT	.01
BW	87
WW	741
YW	1154

WR Mr. Red Dawg 5335

BUF CRK Valentino N031

Sire:

TMS Ms Fortune 114

OHRR 5E Copper Mack 47N

OHRR Dakota Copper 29K

Dam:

OHRR Ms Classy 5E

A good Red Dawg son. Dam is moderate, capacious and good-uddered. Grand dam 5E was a favorite foundation cow. Good EPD's and weights.

31**OHRR ADV DIVIDE 55R-81W**

OHRR 81W 3/9/2009 100% 1A 1339925

BW	3.3
WW	35
YW	61
MILK	23
TM	40
STAY	7
MARB	.04
REA	.07
FAT	-.01
BW	91
WW	681
YW	1184

LCC Divide 1435K

GLACIER Divide 310

Sire:

CJ'S Hobo Mable

OHRR LMF Rambos Tiffany 55R

4L Advantage R9N

Dam:

OHRR 1K-210 Tiffany 66N

A long bodied son of Divide - we wish we had more of them. Divide was thick, correct, dark colored and gentle-dispositioned. Our best '09 female is out of him! 55R is one of our best dams. (MPPA: 102)



32**OHRR MACS LANTRY 7S-87W**

OHRR 87W 3/16/2009 100% 1A 1339945

SJRA 508 Lantry 734

BHR Copper D 508B

Sire:

SJRA V029 Glory

OHRR 344 Foxy Roxy 7S

RBRTS McIntosh II 344

Dam:

OHRR Foxy Roxy 22L

Take a good look at grand dam 22L - she'll stop you in your tracks. Dam 7S is as productive. This bull will do a great job in any herd.

BW	2.3
WW	32
YW	61
MILK	21
TM	37
STAY	8
MARB	.05
REA	.02
FAT	-.01
BW	86
WW	763
YW	1213



Lot 32's Grand Dam



Lot 33's Grand Dam ->

33**OHRR MAHOGNY RED 110T-89W**

OHRR 89W 3/16/2009 100% 1A 1339966

OHRR Dakota Top Dawg 107T

WR Mr. Red Dawg 5335

Sire:

SHHM Annabelle 209P

OHRR 63G Kimas Mahogany 110T

SRR Red Canyon 213

Dam:

OHRR Ms Mahogany 63G

We had to work hard to hang on to this female. Her full sibling 105R sold in the '07 Denver sale for \$11,000 to 3J - Jeff Earles Ranch in Oklahoma where she's doing a great job as well. The performance here is outstanding for a 2 year old. Grand dam pictured. 89W is long and well proportioned.

BW	3.3
WW	43
YW	78
MILK	21
TM	43
STAY	9
MARB	.04
REA	.18
FAT	.00
BW	85
WW	766
YW	1296

34**OHRR RED DIVIDE 93W**

OHRR 93W 3/20/2009 Not Registered

LCC Divide 1435K

GLACIER Divide 310

Sire:

CJ'S Hobo Mable

Dam Unidentified

Multiple Red Angus Sire

Dam:

Multiple Red Angus Dams

This bull sells without registration. His dam is commercial but has generations of Red Angus Sires behind her. Only sire has EPD's.

BW	0.7
WW	37
YW	64
MILK	18
TM	36
STAY	NA
MARB	NA
REA	NA
FAT	NA
BW	85
WW	700
YW	1124



35**OHRR RAMS RD DAWG 62M-98W**

OHRR 98W 3/24/2009 100% 1A 1339919
WR Mr. Red Dawg 5335 BUF CRK Valentino N031
 Sire: TMAS Ms Fortune 114

OHRR 9502 Rams Eve 62M LCHMN Rampage 1098E
 Dam: MESSMER Ophelia 9502

Dam is own daughter of Ophelia - dam of Dakota Copper 62M has been super cow herself. 98W will be maternal/carcass producer. Dam's MPPA: 102

BW	2.8
WW	41
YW	75
MILK	20
TM	40
STAY	7
MARB	-.11
REA	.13
FAT	-.01
BW	87
WW	793
YW	1249

36**OHRR RED DAWG 48R-107W**

OHRR 107W 4/4/2009 100% 1A 1339938
WR Mr. Red Dawg 5335 BUF CRK Valentino N031
 Sire: TMAS Ms Fortune 114

OHRR 9930 Red Canyon Rob 48R SRR Red Canyon 213
 Dam: SEXTON'S Semone 9930

Another supreme female- great grand dam has several power daughters in the herd. We can't say enough about this pedigree.

BW	4.3
WW	46
YW	86
MILK	19
TM	42
STAY	8
MARB	-.05
REA	.26
FAT	.01
BW	90
WW	819
YW	1381

37**OHRR LANDSLIDE 20R-124W**

OHRR 124W 5/12/2009 100% 1A 1339928
OHRR 107J Landslide 113R PIE Avalanche 381
 Sire: SHHM Annabelle 107J

OHRR 6H Ms Robusta 20R OHRR 9502 Mr Robust 18N
 Dam: OHRR 3128 Mac Honey 6H

Youngest bull in the sale and one of the best! Sire is Landslide 113R. Dam is top-notch 3 year old (MPPA: 106) Sired by Mr Robust 18N - top seller in our '06 RPS at \$5600 for 1/2 - his 12 mo. ribeye: 17.1, and IMF 5.5. He also sired several #1 carcass bulls at the Midland Test.

BW	2.4
WW	41
YW	74
MILK	20
TM	41
STAY	8
MARB	-.01
REA	.25
FAT	-.05
BW	85
WW	798
YW	1356

Olson's Red Power Advantage:

- + More performance, muscle & maternal excellence.
- + Carcass, performance, scrotal & pelvic data available.
- + Bulls tested for BVD & from Johnes Free herd.
- + Bulls developed on roughage ration to ensure soundness.
- + Free wintering on bulls over \$2500, 300 mile delivery.
- + \$50 discount if you take your bull home sale day.
- + Reputation breeder of quality registered cattle since 1936!



~ 2008 Bulls ~

38

OHRR MAHGNY BERRY 15L-11U

OHRR 11U 1/28/2008 100% 1A 1265396
RED Fine Line Mulberry 26P RED Compass Mulberry 449M
 Sire: RED Dus Fayette 8G

OHRR 65H Mahogany 15L GLACIER Explorer 740
 Dam: OHRR 508 Mahogany 65H

BW	1.4
WW	37
YW	68
MILK	22
TM	41
STAY	6
MARB	-.01
REA	-.17
FAT	.00
BW	84
WW	723
1-3-10	1740

Great bull. Kept back last year to breed heifers for many reasons: superior dam, great EPD's performance records, good disposition and a son of Mulberry - popular Canadian Sire. Study this bull! We think he'd be a great addition to any program.



Lot 38 at 11 Months

Lot 38's Dam ->



39

OHRR 213 RED CANYON 78L-50U

OHRR 50U 2/15/2008 100% 1A 1265369
SRR Red Canyon 213 LCHMN Grand Canyon 1244G
 Sire: BLUE Ridge Kima 950

OHRR KF 740 Gold Penny 78L GLACIER Explorer 740
 Dam: OHRR 388 Gold Penny 9J

BW	-2.3
WW	16
YW	36
MILK	21
TM	29
STAY	7
MARB	.13
REA	-.34
FAT	.00
BW	66
WW	557
1-3-10	1705

A two year old heifer bull with loads of carcass and maternal power. Dam 78L is Explorer 740 out of the great 9J cow. Red Canyon (OSF) one of the top sons of Grand Canyon.



Lot 39's Dam



OHRR 102U	5/1/2008	100% 1A	1265393
SRR Red Canyon 213		LCHMN Grand Canyon 1244G	
Sire:		BLUE Ridge Kima 950	
SEXTON'S Semone 9930		LMAN King Rob 8621	
Dam:		JKG Semone II Y971	

BW	4.4
WW	42
YW	74
MILK	18
TM	39
STAY	8
MARB	.04
REA	.17
FAT	.01
BW	100
WW	832
1-3-10	1440

Fall bull. Out of beautiful and productive 9930 cow. Her bulls have performed and sold well and her daughters have stayed here. 102U was too young for the 2009 sale - but he's a good one!!



Lot 40's Dam

More Choice...

Less Corn!

Genetic Risk Management

- Increase Percentage Choice
- Decrease Days on Feed
- Improve Conversion
- Improve Disposition & Decrease Dark Cutters
- Decrease Summer Stress
- Access Angus Product Lines
- USDA Approved Source & Age Verification sufficient for substantiating COOL claims

MARC CYCLE VII DATA Report 22

Breed of Sire	% USDA Choice
Red Angus	89.9
Angus	87.6
Simmental	65.7
Hereford	65.4
Charolais	61.9
Gelbvieh	57.7
Limousin	56.9

Building Better Beef...

Red Angus

(940) 387-3502 • RedAngus.org

Watch for our continued series



The Ranchers' Guide...

Information for the profit minded producer

Exclusive Broadcast

Available Free at

DVAuction
Streamlining Your Time Dollars



~ 2008 Fall Bulls ~

41

OHRR A925 LANDSLIDE 103U

OHRR 103U 9/10/2008 100% 1A 1292318

OHRR 107J Landslide 113R PIE Avalanche 381

Sire: SHHM Annabelle 107J

Ms Neo-Sho Memorial A925 LEACHMAN Lncnmem6283

Dam: VAF 0336

Out of our old Duracell cow - 19 years old this fall. A good bull that will add value to your program.

BW	1.9
WW	26
YW	50
MILK	16
TM	30
STAY	7
MARB	-.02
REA	-.04
FAT	.00
BW	74
WW	569
1-3-10	1125

42

OHRR 9010 LANDSLIDE 106U

OHRR 106U 9/25/2008 100% 1A 1292316

OHRR 107J Landslide 113R PIE Avalanche 381

Sire: SHHM Annabelle 107J

LMG Welma 9010 LMG Dakota Coyote 1117

Dam: LMG Welwa T 691

Landslide sons are quite a group - this one is out of an older cow - but a good one! MPPA:

BW	2.8
WW	33
YW	59
MILK	16
TM	32
STAY	7
MARB	.00
REA	.15
FAT	.00
BW	80
WW	606
YW	1180

43

OHRR 32N LANDSLIDE 108U

OHRR 108U 9/27/2008 100% 1A

OHRR 107J Landslide 113R PIE Avalanche 381

Sire: SHHM Annabelle 107J

ESL Monu Honey 503 BJR Monu 4x-303

Dam: PJRR 3128 Macs Honey 15

A good Landslide out of our Honey cow (MPPA: 103.2). Dam of top female in '07 RPS to Ray Brickl in Wisconsin at \$3500 and two bulls in 2006 for a total of over \$6,000.

BW	1.4
WW	37
YW	67
MILK	18
TM	36
STAY	8
MARB	-.11
REA	.09
FAT	-.02
BW	NA
WW	590
YW	1165

44

OHRR 51J LANDSLIDE 109U

OHRR 109U 9/27/2008 100% 1A 1292324

OHRR 107J Landslide 113R PIE Avalanche 381

Sire: SHHM Annabelle 107J

OHRR Macs Sophia 51J RBRTS McIntosh II 344

Dam: LMB St Sophia 704

Out of a Mac344 daughter and the beautiful Sophia cow from the Lambrecht program.

BW	2.7
WW	31
YW	53
MILK	14
TM	30
STAY	9
MARB	-.12
REA	.07
FAT	.00
BW	80
WW	640
YW	1310





Lot 40's Dam



Lot 41's Dam

45

JECA U228

JECA U228 11/5/2008 100% 1A 1294947
 WHITESTONE Cayenne 423R LCHMN Grand Canyon 1244G
 Sire: FEDDES Blockanna 807
 JECA Gold Star LCHMN Gold Robber 1909E
 Dam: TENN Silver Star

BW	-0.2
WW	39
YW	78
MILK	28
TM	47
STAY	6
MARB	.05
REA	.16
FAT	.03
BW	70
WW	796
1-3-10	1300

We purchased this awesome son of Cayenne this fall to use on some heifers and young cows. His "stats" were outstanding as is his phenotype. Due to a fair amount of interest, we have decided to offer a semen interest in him. We will retain possession here. His dam has an MPPA of 102.



Lot 45

Olson's Red Power Advantage:

- + More performance, muscle & maternal excellence.
- + Carcass, performance, scrotal & pelvic data available.
- + Bulls tested for BVD & from Johnes Free herd.
- + Bulls developed on roughage ration to ensure soundness.
- + Free wintering on bulls over \$2500, 300 mile delivery.
- + \$50 discount if you take your bull home sale day.
- + Reputation breeder of quality registered cattle since 1936!



~ Reference Sires ~

A WR MR RED DAWG 5335

5335 WR	3/25/2005	100% 1A	1046249
BUF CRK Valentino N031		BECKTON Julian GG B571	
Sire:		BUF CRK Primrose 5679	
TMAS Ms Fortune 114		LMAN King Rob 8621	
Dam:		STRAKA Ms Fortune 4109	

BW	3.5
WW	53
YW	100
MILK	19
TM	45
STAY	8
MARB	-.13
REA	.50
FAT	.01
BW	86
WW	798
YW	1607

World Record REA at 20.4". High performance, extra long and his dam has a 107 MPPA. Note the power in his numbers and progeny! Owned with Thomas, Weidenbach, Gill Llyod, Double Diamond and Harbin. Semen available through Big Red Genetics. Tested OS Free.

B OHRR 10H DAKOTA RAMBLER 75R

OHRR 75R	2/22/2005	100% 1A	1025344
OHRR Dakota Copper 29K		LCHMAN Copper Rob 1204D	
Sire:		MESSMER Ophelia 9502	
OHRR Ms Scarlett 10H		LCHMN Rampage 1098E	
Dam:		OHRR Ms 925 Scarlett 15F	

BW	3.0
WW	35
YW	64
MILK	21
TM	38
STAY	4
MARB	-.12
REA	.07
FAT	.00
BW	94
WW	778
YW	1477

A top Dakota Copper son from one of our greatest cow families. 16.3 REA and big performance also. Topped our '06 sale \$15,000 (1/2) Owned with Gill Red Angus and the Rambler Syndicate. Semen available through Big Red Genetics. Tested OS Free.

C SRR RED CANYON 213

SNSN 213	1/31/2002	100% 1A	841830
LCHMN Grand Canyon 1244G		BUF CRK CHF 824-1658	
Sire:		KRN Reba's Robin	
BLUE Ridge Kima 950		GLACIER Logan 210	
Dam:		BLUE Ridge Kima 806	

BW	2.5
WW	44
YW	81
MILK	23
TM	45
STAY	9
MARB	.27
REA	.24
FAT	.01
BW	97
WW	746
YW	NA

Senior herdsire that adds performance and muscle. Note the high carcass EPDs too. He's been leaving nice daughters also. Owned with Strawberry Ridge Reds - Semen available from OHR. Tested OS Free.

D SJRA 508 LANTRY 734

JDI 734	3/13/2007	100% 1A	1163862
BHR Copper D 508B		OHRR Dakota Copper 29K	
Sire:		MISS BHR Logan 212	
SJRA V029 Glory		VGW Forefront 029	
Dam:		SJRA C62 Glorya	

BW	1.1
WW	34
YW	69
MILK	23
TM	40
STAY	8
MARB	.15
REA	.24
FAT	-.01
BW	89
WW	734
YW	1230

A grandson of OHRR Dakota Copper 29K, a legend in our herd and a star in the ABS lineup. 734 comes from a long line of great females. Dam has 104 MPPA and granddam a 103 MPPA. Owned with Gill Red Angus.

E OHRR 107J LANDSLIDE 113R

OHRR 113R	7/6/2005	100% 1A	1130253
PIE Avalanche 381		PERKS Advance 121R	
Sire:		PIE Ms Grand C 036	
SHHM Annabelle 107J		SHHM Robin Hood 117G	
Dam:		SHHM Red Rebelle 02E	

BW	2.8
WW	37
YW	69
MILK	20
TM	38
STAY	8
MARB	-.05
REA	.20
FAT	.00
BW	79
WW	777
YW	1311

Our senior herdsire. Big, powerful, heavy muscled, high performance bull. His donor dam is an awesome female with a 106 MPPA and is the dam of lot 20 in this sale. Her daughter sold for \$10,000 in our 2007 Dams of Distinction sale. Tested OS free.



WR Mr. Red Dawg 5335

Dam of Red Dawg ->



OHRR 10H Dakota Rambler 75R

10H, Dam of 75R ->



SRR Red Canyon 213



SJRA 508 Lantry 734's Grand Sire



OHRR 107J Landslide 113R at 2 Years Old



~ Red Angus Heifers ~

We are very proud to offer what we feel is the strongest group of females which we have ever put in our sale. This is great potential here!

46

OHRR MAGIC VANNA 40T-8W

OHRR 8W 1/28/2009 99.4% 1B 1339963
 OHRR 14M Grand Magic 123T WR Mr. Red Dawg 5335
 Sire: OHRR 65H Grand Mahogany 14M
 OHRR 30J Macs Vanna 40T 4L Advantage R9N
 Dam: OHRR 35B Macs Lela 30J

BW	2.8
WW	36
YW	66
MILK	18
TM	37
STAY	8
MARB	-.07
REA	.23
FAT	0
BW	76
WW	683
YW	953

Excellent female out of a first calver. Sire is an own son of the \$20,000 14m cow which sold in our 2007 cow sale to Link Ranches in Pennsylvania. Everything is good here. 99.4% 1-B.

47

OHRR CASEY ANNA 104M-14W

OHRR 14W 2/4/2009 100% 1A 1339918
 OHRR 107J Landslide 113R PIE Avalanche 381
 Sire: SHHM Annabelle 107J
 OHRR 1098 Ms Casey 104M LCHMN Rampage 1098E
 Dam: Ms Casey 118

BW	2.0
WW	28
YW	49
MILK	16
TM	31
STAY	5
MARB	-.02
REA	-.12
FAT	.00
BW	82
WW	699
YW	1027

Sale feature: destined for the Santa Sale but held for this sale. Her dam 104M has an excellent record (MPPA: 101) and continues to produce the best. We have several daughters.



48**OHRR JUSTA BEAUTY 846-24W****OHRR 24W 2/7/2009 100% 1A 1339903****OHRR 10H Dakota Rambler 75R OHRR Dakota Copper 29K**

Sire: OHRR Ms Scarlett 10H

MISS BHR Justice 846 RD Western Justice

Dam: MISS RHP Deal 331

Rambler out of 13 year old foundation cow - still weans AWW 718. This heifer also was to be in Santa Sale VI but we decided she should sell today. 24W will be great cow.

BW	2.7
WW	29
YW	59
MILK	16
TM	30
STAY	6
MARB	-.08
REA	.06
FAT	.00
BW	71
WW	718
YW	1078

**Lot 48****49****OHRR MS GLORYA 0624-33W****OHRR 33W 2/12/2009 100% 1A 1339957****SJRA 508 Lantry 734 BHR Coppe D 508B**

Sire: SJRA V029 Glory

JLRA Red Star 24S CBR Ram 3109-936

Dam: BIEBER Daphne 6067

Lantry (GS: 29K) GD is Daphne 6067 a very good cow. Nice EPD's and weights.

BW	1.7
WW	26
YW	55
MILK	17
TM	30
STAY	7
MARB	.04
REA	.07
FAT	-.01
BW	73
WW	623
YW	941

50**OHRR MS GLORY 24S-42W****OHRR 42W 2/15/2009 100% 1A 1339941****SJRA 508 Lantry 734 BHR Copper D 508B**

Sire: SJRA V029 Glory

LMF 34P Towa Dionne 24S OHRR 99L Copper Hi Ho 108N

Dam: OHRR 75H Towa Diva 34P

Lantry, Copper Hi Ho daughter nicely balanced EPD's and awesome production. MPPA: 103. Will make great replacement.

BW	0.2
WW	36
YW	67
MILK	21
TM	38
STAY	8
MARB	.05
REA	.14
FAT	-.01
BW	72
WW	739
YW	840



51**OHRR RED LASS 30J-48W****OHRR 48W 2/18/2009 98.8% 1B 1339905****WR Mr. Red Dawg 5335**

BUF CRK Valentino N031

Sire:

TMAS Ms Fortune 114

OHRR 5E Dakota Classy 39R

RBRTS McIntosh II 344

Dam:

LELAND Rimtop 416-35B

39R Dam - very productive Mc344 daughter. Good EPD's and weights 98.8% of 1-B.

BW	0.8
WW	36
YW	65
MILK	14
TM	32
STAY	9
MARB	-.14
REA	.22
FAT	.01
BW	73
WW	652
YW	795

52**OHRR RED CUB LASS 486-73W****OHRR 73W 3/5/2009 100% 1A 1339902****WR Mr. Red Dawg 5335**

BUF CRK Valentino N031

Sire:

TMAS Ms Fortune 114

OHRR 925 Cub Lass 46G

GLACIER Cub 446

Dam:

MS Neo-Sho Memorial A925

A sale feature. Red Dawg out of Cub Lass 46G cow family (MPPA: 103, age 13). Scarlett sold 2 daughters in Santa Sale at \$3000. Several in herd. Note AWW on this one. Great EPD's!

BW	3.2
WW	43
YW	80
MILK	20
TM	41
STAY	9
MARB	-.04
REA	.15
FAT	.00
BW	88
WW	774
YW	1113

53**OHRR COPPER CASEY 87R-103W****OHRR 103W 3/31/2009 100% 1A 1339937****WR Mr. Red Dawg 5335**

BUF CRK Valentino N031

Sire:

TMAS Ms Fortune 114

OHRR 104M Copper Casey 87R

OHRR Dakota Copper 29K

Dam:

OHRR 1098 Ms Casey 104M

Sale Feature: Full brother in '09 Red Power Sale sold to Perry and Nancy Betsch for \$4300. T Bred heifer to Pifers at #2500.

BW	3.1
WW	39
YW	70
MILK	17
TM	36
STAY	7
MARB	-.10
REA	.12
FAT	.01
BW	85
WW	672
YW	937

54**OHRR RAMBLERS FLO 108R-29W****OHRR 29W 2/10/2009 100% 1A 1339932****OHRR 10H Dakota Rambler 75R**

OHRR Dakota Copper 29K

Sire:

OHRR Ms Scarlett 10H

OHRR 310 Flo Favet 108R

OHRR 6H Explorer 97N

Dam:

SRR Flo-Marie 310-185

Strong maternal pedigree. Dam 108R goes back to Explorer 740 and the \$50,000 Flo Marie 185 cow. Will make a nice cow.

BW	2.2
WW	28
YW	52
MILK	20
TM	34
STAY	5
MARB	.00
REA	.04
FAT	-.06
BW	82
WW	621
YW	886



- Introducing our newest Herdsire -
Red Global Trust 21T



Semen \$30
Certificates \$40

EPD's	
BW	-2.4
WW	28
YW	63
Milk	26
M&G	40

Red Global Trust 21T - Born 1/19/2007

LCC Above & Beyond 1300J Lchman Above Heaven 1018F

Sire: Red HXC 701G

Red Global's Lakina 87R Milk Creek Cub 722

Dam: Red Angus Medos Lakina 77D

BW 84
WW 834
YW 1415

Trust is our newest herdsire selected for his extra muscle, great depth of body, powerful performance and a wonderful structure. He carries a very good pedigree and well balanced EPD's with a low birth and high milk combination. His dam descends from an extremely prolific maternal family. Trust was selected to continue our tradition of great maternal & performance excellence. Contact us for semen!

Owned with: Northline Red Angus - Ardossan, Alberta



OHR's 2009 Red Power Bull Sale!



~ Reference Sire ~

A

MRC JOHNNY CASH 524

MRC 524 2/21/2005 100% 1A P42630344

REMITALL Jonathon 73J REMITALL Embracer 8E

Sire: REMITALL Feline Marvel 22F

RU 8G Robyn 27L GERBER Gunner 8G

Dam: HAROLDSON'S CU Robyn 20X 27H

Jonathan son from an excellent Gunner & Keynote bred cow who is a Dam of Distinction with a 109 WWR. 524 has extra muscle, depth, pigmentation and a wonderful mother. He is a breed improver for 11 of 15 meaurable traits!

BW	5.5
WW	52
YW	92
MILK	19
TM	45
SC	1.1
REA	.20
FAT	.008
IMF	.11
BW	NA
WW	NA
YW	NA



For a DVD/info contact:



OLSON
Hereford Ranch

2713 166 Ave SE - Argusville, ND 58005

Carl Olson- (701) 361-0684 -olsoncandc@aol.com

www.olsonherefordranch.com

"We Breed Excitement!"

2010 Spring American Hereford Association EPD averages

2008 & 2009 born calves

BW	WW	YW	Milk	TM	Sc	Marb	REA	Fat
3.6	43	71	17	39	.5	.02	.20	.001

Olson's Red Power Advantage:

- + More performance, muscle & maternal excellence.
- + Carcass, performance, scrotal & pelvic data available.
- + Bulls tested for BVD & from Johnes Free herd.
- + Bulls developed on roughage ration to ensure soundness.
- + Free wintering on bulls over \$2500, 300 mile delivery.
- + \$50 discount if you take your bull home sale day.
- + Reputation breeder of quality registered cattle since 1936!



~ Polled Hereford Bulls ~

55

OHR KNIGHT 87T 18W

OHRR 18W 2/5/2009 100% 1A 43043745
 RF Knight 3238 5T TRM 37E 121 King 3228
 Sire: RF Genetic Lady 20L 61R

OHR Sunny 415E 87T ET RJK Momentum H45
 Dam: MW Sunny 415E 1ET

BW	2.9
WW	66
YW	97
MILK	20
TM	53
SC	1.1
REA	.46
FAT	.007
IMF	-.03
BW	76
WW	824
YW	1208

Great length and muscle with extra performance. Dam is a wonderful first calf heifer from a Dam of Distinction Boomer daughter. Top 5% of the breed for WW, YW, M & G, and CHB Index. Top 10% also for Scrotal, REA and Baldy Maternal Index. A breed improver for 13/15 categories. Will work on heifers!



Lot 55

56

OHR DUTY FREE 110N 41W

OHRR 41W 2/14/2009 100% 1A 43049888
 REMITALL Super Duty 42S REMITALL Patriot ET 13P
 Sire: REMITALL Rita 91H

BNC 4L Diamond Lil 110N FCC 60G Maddux 4L
 Dam: BLACK-Diamond Gleamer 209J

BW	6.9
WW	59
YW	103
MILK	17
TM	47
SC	1.0
REA	.25
FAT	.01
IMF	.11
BW	93
WW	717
YW	1149

Heavy muscled, high performance son of the record setting \$270,000 Super Duty. Dam is an excellent Maddox & 19D bred cow that raised our top selling bull last year. Her 2008 heifer calf sold for \$10,000. Top 5% of breed for WW, YW, and CHB Index.



Lot 56

Lot 56's Dam - >



57**OHRR LITTLE JOHNNY 41R 78W****OHRR 78W 3/7/2009 100% 1A 43049732**

MRC Johnny Cash 524

REMITALL Jonathon 73J

Sire:

RU 8G Robyn 27L

OHR Nikita 88G 41R

VCR East Kodak 506E

Dam:

SALUNGA Georgie Girl

Big, high performance March bull with lots of pigment. His mother is a wonderful uddered Kodiak 4 year old that traces to some legends of the breed like S133. Top 10% for WW, YW, and Scrotal. Breed improver for 11/15 categories.

BW	5.1
WW	55
YW	94
MILK	18
TM	45
SC	1.1
REA	.25
FAT	.04
IMF	.09
BW	89
WW	741
YW	1196



Dam of 78W - Grand Champion at 2007 ND Winter Show as a first calf heifer.

Lot 57 - >**58****OHR VICTOR 518B 61W ET****OHRR 61W 2/25/2009 100% 1A 43052490**

GV 48C Victor 9823

CF Victor 103T 48C

Sire:

GV 2B Whitney 9523

GK Madame Ex 518B

GK Fed Ex 500B

Dam:

GK Bonny 235Z

Very good, long bodied son of the very maternal 9823 whos mother is a Dam of Distinction. Dam traces to Fed Ex and the great 732R and has a 111 WWR. Solid, old school genetics here! Embryo calf.

BW	4.0
WW	40
YW	62
MILK	13
TM	33
SC	0.4
REA	NA
FAT	NA
IMF	NA
BW	97
WW	671
YW	1130



59**OHR BREEZER 110M 104W****OHRR 104W 4/2/2009 100% 1A 43049917****REMITALL Seabreeze 98S** REMITTAL Lagrd Pounder ET 204P

Sire: REMITTAL Debbie 104N

MHPH Ms 24K Kerry 110M REMITTAL Icon 24K

Dam: BET-AN 832W Kerry 13K

BW	6.2
WW	50
YW	87
MILK	16
TM	41
SC	0.8
REA	.22
FAT	0
IMF	.09
BW	95
WW	677
YW	1151

Deep, thick, long, moderate April bull from a very productive Icon daughter. Her mother carried a 110 WWR when I produced her in the Remittal Dispersal - Top 25% of breed for WW, YW, Scrotal, Marbling & CHB.

**Lot 59****60****OHR HERES JOHNNY 27W****OHRR 27W 2/9/2009 100% 1A 43049743****MRC Johnny Cash 524** REMITTAL Jonathon 73J

Sire: RU 8G Robyn 27L

OHR Little Sister 82N GENETIC Blitz 434V 0901

Dam: OHR Susie 30G

Heifer bull here! Long, smooth structure. 0.7 BW dam with a 94.8 BW ratio on 5 calves. Dam's mother and grandmother are Dam's of Distinction along with the mother of the sire!

BW	3.0
WW	42
YW	69
MILK	16
TM	37
SC	0.6
REA	.20
FAT	.01
IMF	.05
BW	84
WW	641
YW	1057

61**OHR JOHNNY ONE TIME 52W****OHRR 52W 2/19/2009 100% 1A 43049738****MRC Johnny Cash 524** REMITTAL Jonathon 73J

Sire: RU 8G Robyn 27L

OHR Nikita 16G 51R VCR East Kodiak 506E

Dam: OHR Questiva 16G

Another good, long bodied, short marked son of our herdsire Johnny Cash. Dam is a great uddered Kodiak daughter who keep birth weights down and has been very productive. Should be easy calving yet produce good growth and performance.

BW	5.2
WW	45
YW	78
MILK	16
TM	38
SC	0.9
REA	.25
FAT	.02
IMF	.11
BW	88
WW	630
YW	1110



~ 2008 Born Polled Hereford Bulls ~

62

OHR PRIME TIME N7 31U ET

OHRR 31U 2/8/2008 100% 1A 42930681

MOHICAN Prime Up 72P MOHICAN Mint 19M

Sire: MOHICAN Plus 107M

RJH H45 Betty N71 RJH Momentum H45

Dam: STAR Brooks 39K

BW	3.3
WW	49
YW	76
MILK	18
TM	43
SC	0.9
REA	.39
FAT	.03
IMF	.09
BW	71
WW	631
YW	1105

Good, complete ET bull from Betty who's dam and granddam are both Dams of Distinction. We bought into Prime Up after seeing his \$54,000 mother. This bull is a breed improver for 11/15 categories and in top 24% for WW, Scrotal, REA, Marbling, BMI and BII Indexes. Should work really well on heifers!



**Lot 62
at 22 Months**

63

OHR MASTERFUL 19N 60U

OHRR 60U 2/23/2008 100% 1A 42931327

HA Masterpiece M242 REMITALL Governor 236G

Sire: HA Remtone 706G

OHR Nikita 406E 19N VCR East Kodiak 506E

Dam: JAK 218Y Rarity 406E

BW	7.8
WW	56
YW	85
MILK	18
TM	46
SC	0.9
REA	.37
FAT	.01
IMF	.07
BW	106
WW	681
YW	1147

Big, long sided son of Masterpiece from one of our favorite Kodiak daughters. Both of the grandsires are Sires of Distinction and CHB leaders. Dam has a production WWR of 107. In the top 20% of breed for WW, YW, Scrotal, M & G, REA and CHB indexes.



Lot 63's Dam



64**OHR WALKER 931H 89U****OHRR 89U 3/19/2008 100% 1A 42947841****OHR Kodiak D467 75M** VCR East Kodiak 506E

Sire: HUSO 114 Gem D467

SADDLE-Valley 7C Jen 931H KLNDIKE 500Z Fedrtion 7C

Dam: TA-BAR Jen 016B

Big, long, high performance son of our great 75M bull, son of Kodiak- trait leader for ribeye, marbling, scrotal, SOD & CHB leader. Dam is a very nice Federation daughter with a 103.4 WWR and 93.3 BWR. Top 10% of breed for WW, YW, REA, and CHB index.

BW	5.9
WW	60
YW	96
MILK	13
TM	42
SC	.08
REA	.50
FAT	.01
IMF	-.02
BW	97
WW	753
YW	1298

**Lot 64 & 65's Sire****Lot 64's Grand Dam ->****65****OHR KODIAK 106R 112U****OHRR 112U 11/18/2008 100% 1A 42974202****OHR Kodiak D467 75M** VCR East Kodiak 506E

Sire: HUSO 114 Gem D467

OHR Gloria 9284 106R BJH Momentum H45

Dam: OXH Sigrid 9284

A very nice, well muscled, fall bull from our senior herdsire 75M and good Momentum daughter with 94% BWR and 108% WWR. Top 10% for WW, REA, BMI and CHB indexes. A breed improver for 13/15 categories. Will work very well on heifers!

BW	3.1
WW	54
YW	82
MILK	19
TM	46
SC	1
REA	.55
FAT	.01
IMF	.07
BW	65
WW	648
YW	1101

**Lot 65****Lot 65's Grand Dam ->**

~ Polled Hereford Heifers ~

66

OHR WBI KEYSHA 3W

OHRR 3W 1/24/2009 100% 1A 49014712

RF Knight 3238 5T

TRM 37E 121 King 3238

Sire:

RF Genetic Lady 20L 61R

OHR Keysha P606 120S

PW Victor Boomer P606

Dam:

SSF Keysha 956

Excellent January heifer with good rib, super structure and lots of eye appeal. Dam is an excellent first calf heifer from the very popular female producer, P606. Grandmother was a donor for us and a full sister to Star Lake and Herman's great Keysha 949. Top 15% for BW, Milk, M & G, and REA. Breed improver for 11/15 traits. Owned with Dr. Bill Isaacson, Park Rapids, MN.

BW	1.5
WW	46
YW	69
MILK	24
TM	47
SC	.08
REA	.42
FAT	.019
IMF	.0
BW	70
WW	654
YW	929



Lot 66

Keysha - Donor for OHR & Grand Dam of 3W ->



67

OHR ROBYN 116G 101W

OHRR 101W 3/25/2009 100% 1A 43049748

MCR Johnny Cash 524

REMITALL Jonathon 73J

Sire:

RU 8G Robyn 27L

MOHICAN Vindi 116G

MOHICAN Dayta 1ET

Dam:

MOHICAN Vindi M78C

A great March heifer with extra depth, good thickness, nice pigmentation and a very attractive look. Mother is a super Boomer granddaughter that is a Dam of Distinction with a 99 BWR and a 103 WWR. This heifer has great show potential & should make a super cow.

BW	3.8
WW	48
YW	78
MILK	17
TM	40
SC	0.7
REA	.22
FAT	.01
IMF	.01
BW	76
WW	627
YW	979



Lot 67

Lot 67's Dam ->



68**OHR ROBYN 129J 91W****OHRR 91W 3/18/2009 100% 1A 43049749**

MRC Johnny Cash 524

REMITALL Jonathon 73J

Sire:

RU 8G Robyn 27L

WLB 81E Carla 129J

WTK 102M Carson 81E

Dam:

SHELL-RIVER 108E Nancy 17G

Fancy March heifer with good length, super front end and good correctness. Dam is a very good, productive Carsan daughter we selected in the WLB cow sale.

BW	4.7
WW	41
YW	71
MILK	18
TM	38
SC	0.6
REA	.11
FAT	.00
IMF	.06
BW	86
WW	575
YW	927

**Lot 68****69****OHR SHARON ESTA 26L 15W****OHRR 15W 2/4/2009 100% 1A 43049755**

REMITALL Lagrd Pounder ET 204P

REMITALL Highway ET 157H

Sire:

REMITALL Catalina 24H

REMITALL Sharon Esta ET 26L

REMITALL Governor 236G

Dam:

REMITALL Sharon Esta 84E

A very good heifer with a powerful pedigree of performance sires all the way through. She's correct, short marked and attractive.

BW	6.0
WW	44
YW	72
MILK	17
TM	39
SC	0.4
REA	.31
FAT	.00
IMF	.04
BW	87
WW	487
YW	877

70**OHR JUNO 178M 96W****OHRR 96W 3/24/2009 100% 1A 49049756**

REMITALL Reward 17R

REMITALL Governor 236G

Sire:

REMITALL Rita 26N

REMITALL Ms Juno 178M

REMITALL Governor 236G

Dam:

REMITALL Juno 85K

A very good, complete heifer that's double bred to the maternal, performance giant, Governor. Dam is a moderate, great uddered cow. A breed improver for 11/15 categories.

BW	4.7
WW	42
YW	67
MILK	18
TM	39
SC	0.8
REA	.30
FAT	-.03
IMF	.05
BW	86
WW	569
YW	934



71**OHR ROBYN 19N 94W**

OHRR 94W 3/21/2009 100% 1A 43049734

MRC Johnny Cash 524

REMITALL Jonathon 73J

Sire:

RU 8G Robyn 27L

OHR Nikita 406E 19N

VCR East Kodiak 506E

Dam:

JAK 218Y Rarity 406E

Fancy March heifer from a very good Kodiak daughter - a 107 WWR and great udder quality. Top 15% for WW, YW, Scrotal, and CHB. Should make a great cow.

BW	6.6
WW	53
YW	88
MILK	14
TM	1
SC	1.0
REA	.25
FAT	.01
IMF	.09
BW	92
WW	625
YW	984

**Lot 71's Dam****72****OHR ROBYN 40N 50W**

OHRR 50W 2/18/2009 100% 1A 43049736

MRC Johnny Cash 524

REMITALL Jonathon 73J

Sire:

RU 8G Robyn 27L

OHR Nikita 406E 19N

VCR East Kodiak 506E

Dam:

JAK 218Y Rarity 406E

Fancy February heifer from a 110 WWR Kodiak daughter. Top 20% for Scrotal, Marbling and BII Index. Dam had one of our top bulls last year.

BW	3.2
WW	40
YW	69
MILK	16
TM	36
SC	0.9
REA	.24
FAT	.02
IMF	.11
BW	80
WW	536
YW	760

73**OHR ROBYN 67R 102W**

OHRR 102W 3/27/2009 43049740

MRC Johnny Cash 524

REMITALL Jonathon 73J

Sire:

RU 8G Robyn 27L

OHR Gloria 68N 67R

RJH Momentum H45

Dam:

OHR Scarlett 68N ET

Fancy end of March heifer whos dam is a nice Momentum daughter out of our great donor, 68G. Dam's pedigree is stacked with performance and maternal breed giants Kodiak, Boomer and Butler. EPD's are pedigree estimates as 102W is not yet registered. 102W looks to be a breed improver for 11 of 15 catagories and in the top 10% for WW, Scrotal & BMI, BII and CHB indexes.

BW	3.7
WW	55
YW	85
MILK	15
TM	45
SC	1.1
REA	.40
FAT	.04
IMF	.06
BW	92
WW	458
YW	804



74**OHR ROBYN 68G 88W**

OHRR 88W 3/16/2009 43049741

MRC Johnny Cash 524 REMITALL Jonathon 73J

Sire: RU 8G Robyn 27L

STAR T Bonita A6 68G WTK 55Y Bond 75A

Dam: WILLVIA Miss Victoria A6

BW	5.7
WW	43
YW	76
MILK	14
TM	35
SC	0.8
REA	.26
FAT	.005
IMF	-.03
BW	84
WW	515
YW	816

Another attractive Johnny Cash heifer from 68G, a daughter of the great donor, Dam of Distinction and Benchmark Dam, A6. 27L on the top is a Dam of Distinction also. This is a very maternal pedigree! A son of 68G pictured below sold for \$3500 in our 2008 Red Power sale.

**Lot 74****51S Son of Lot 74 ->****75****OHR ROBYN 85L 125W**

OHRR 125W 5/23/2009 100% 1A 43049744

MRC Johnny Cash 524 REMITALL Jonathon 73J

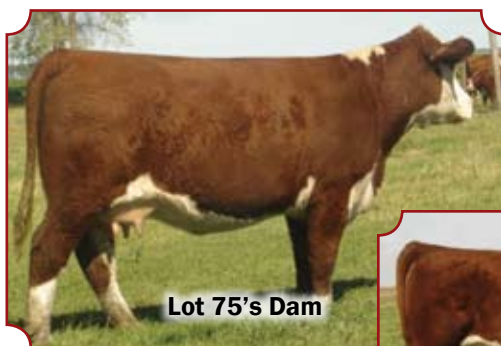
Sire: RU 8G Robyn 27L

OHR Bonita B02 85L WTK 55Y Bond 75A

Dam: HHR Trudy 926Y B02

BW	6.0
WW	50
YW	88
MILK	16
TM	41
SC	1.0
REA	.34
FAT	.01
IMF	.00
BW	90
WW	575
YW	831

End of May heifer with a great front and good, correct structure. Her mother is a powerful cow that has produced some very good daughters. A daughter pictured below sold for \$5500 and went on to be World Beef Expo Champion Cow/Calf in 2007. Top 25% for WW, YW, Scrotal and REA. Don't over look this one!

**Lot 75's Dam****Lot 75's Maternal Sister**



OHR Fantasia 85L 53R
2007 World Beef Expo Champion Cow/Calf
Congratulations to the Katsenbergers - Plum River Ranch
Monroe, WI & Freeport, IL
~ Maternal sister sells as lot 75! ~

MORE EFFICIENT MEANS MORE HEREFORD.

HEREFORD - MAKING BLACK BETTER.



*For efficiency and profitability, nothing gets you there faster ~ than Hereford.
Hereford characteristics, such as gain and feed conversion, show
a \$78 advantage per head over Angus-sired calves from start to finish*.
Ideal for your herd and for the future of your business, adding Hereford
gives you the power to become more profitable.*

American Hereford Association
P.O. Box 014059, Kansas City, MO 64101
(816) 842-3757 • www.hereford.org

Carl Olson
Olson Hereford Ranch
2713 166 Ave SE
Argusville, ND 58005
(701) 361-0684

* Preliminary findings from 2007 California State University study in cooperation with Lacey Livestock, Harris Feeding Co., and Harris Ranch Beef Co. "Impacts of Crossbreeding on Profitability in Vertically Coordinated Beef Industry Marketing Systems." Visit Hereford.org and click on the "Heterosis Report" tab or contact Jack Ward, AHA chief operating officer, at jward@hereford.org for more information.

 **HEREFORD**

~ Notes ~



Cattlemen know what to expect when you integrate great genetics!

Here is what you can expect from us!!

- Marketing Efficiencies • Dynamic Sales Team
- Extensive Market Experience • Quality Catalogs
- Premier Advertising • Purchasing Power
- Strong Buyer Base • Quality Photography
- Comprehensive Mailing List

Our Services Include:

Livestock Auction & Sales Management
Consulting Services
Auction Services
Quality Photography

Buy & Sell Cattle for Commercial & Purebred Breeders



Meet Our Livestock Marketing Team



**Pifer's Livestock Marketing
Corporate Office**

1506 29th Ave South
Moorhead, MN 56560
218.477.1968

Bryan Gill

Sales Manager
701.730.0134
bigredgenetics@hotmail.com

Andy Mrnak

Sales Manager/Auctioneer
701.206.1095
andy@pifers.com

Kevin Pifer

Auctioneer
701.238.5810
kpifer@pifers.com

Kenton Carlson

Sales Manager
701.226.2585
kenton@pifers.com

"Call us today and we will come to your ranch at no obligation."

Book your 2010 Sales & Auctions Now!

877.700.4099

www.pifers.com