

Olson's
Red Power

Performance Bull Sale

At the Ranch ~ Argusville, ND



~ Thursday ~

February 19, 2009

~ Noon Meal ~ 1:00 Sale ~

73 LOTS SELL

44 - Red Angus Bulls

8 - Red Angus Heifers

11 - Polled Hereford Bulls

10 - Polled Hereford Heifers

“ We Breed Excitement ”



~ General Information ~

Sale Time: 1:00 CST, Thursday, February 19, 2009. Complimentary noon lunch. There will be refreshments and food later in the afternoon on Wednesday, February 18.

Location: At the ranch. From Argusville on I-29: 7 West on Cass #4, 1 North & ½ West. From Casselton @194: 10 North on State Hwy 18, 5 East on Cass #4, 1 North & ½ East.

Motels: Holiday Inn, on Interstate 29 in Fargo <20 minutes to ranch> 701.282.2700. Governors Inn, on Interstate 94 at Casselton <20 minutes to ranch > 888.847.4524. Fargo has many nationwide hotels 20 minutes from OHR.

Airline Service: Northwest and United both serve Fargo's Hector International Airport.

Delivery: Free delivery to central points up to 300 miles and further distances at cost. Take your bull home sale day and get \$50 off.

Free Wintering: We keep your bull until April 1st on purchases of \$2500 or more. We recommend insurance for those animals not leaving on sale day.

Guarantee: All cattle are fully guaranteed according to the standards set by the American Red Angus and American Hereford Associations. 2007 born bulls have been fertility tested. We will test yearlings prior to delivery on 4/1. We recommend you test yearling taken home on sale day.

Terms: Terms of the sale are cash or check. Settlement must be made immediately following the sale before animals can be loaded or delivered. Every animal sells to the highest bidder. Any correction from the auction block takes priority over printed material in the catalog. We will be retaining a semen interest in some of the bulls selling.

Liability: All attending the sale do so at their own risk. OHR assumes no responsibility for accident or injury.

EPD's: All EPD's are current as of January 20, 2009. As yearling weights, carcass ultrasound and scrotal measurements are taken the EPD's may change some by sale day. Registration numbers are provided so you can research animals further at breed websites: www.redangus.org or www.hereford.org.

Cattle on Display: All sale cattle are at the ranch and we will invite you to stop prior to the sale to look them over and visit with us. Many of the mothers and sires will be nearby also. Sale cattle will be available for viewing in their display pens the afternoon of Wed. February 18 and again Thursday morning until the sale starts.

Herd Health: All bulls will be tested for BVD. Our herd is Johnes Free. All sale cattle were vaccinated and boosted this fall with Bovi Shield 5 and Ultra One Shot 7 and treated again with Ivermectin pour on in December. Vet work by Dr. Peterson and Casselton Vet Service - 800-216-9985.

Supplement Sheet: More information will be available upon request on week prior to the sale and available sale day, including: Ribeye, back fat, marbling, pelvic area and scrotal measurements. Current EPD's and weights are provided in the catalog. We hope to provide you with the most accurate information possible so when you see the cattle you can make the best selection for your program.

Mail and Phone Bids: Bidders unable to make the sale may contact the Olsons or a staff member to assist in the bidding process. Cell phone numbers listed below.

The Olsons - Cell Phones

Edward.....701-238-3601
Carl.....701-361-0684
Jeanne.....701-866-5779
Craig.....701-367-6704

Sale day phone ~ 701-484-5779

Sale Staff - Cell Phones

Kyle Gilchrist, Auctioneer641-919-1077
Kris Peterson, Cattle Business Weekly.....701-339-0305
Levi Landers, AHA.....308-730-1396
Terry Robinson, Farm & Ranch Guide.....701-471-5153
Bryan Gill, Pifer's Livestock Marketing.....701-730-0134
Malynda Carter.....701-351-4758
Cassie Johnson, Live Auction.tv.....712-490-5397

View Sale Broadcast Online

Real-time bidding is available via the Internet for this sale. Live audio and video will allow buyers to bid on animals just as if they were present at the sale. Buyer account must be created prior to the sale. Please visit www.LiveAuctions.tv to create an account and request a buyer number. For more information, contact Brad Fahrmeier at (816) 392-9241 or Bfahrmeier@aol.com.

LiveAuctions.TV

~ OHR Red Power Sale - Thursday, February 19, 2009 ~
~ Noon Meal ~ 1:00 Sale ~

Dear Cattlemen,

Welcome to the Red Power Performance Tested Bull Sale on Thursday, February 19. The bulls are an impressive group again this year with the performance, muscle and genetic makeup of one of our best groups ever. They have been performing well on test and we are excited to see the data as it comes in.

The 2009 sale will be held in our heated sale facility at the ranch; 7 West, 1 North and ½ West of Argusville. Here you will have the opportunity to see the bulls in their "natural" environment. Many of the mothers will be calving or close to it and can be viewed at this time. Our herdsires will be nearby also. The bulls should stay healthier without the extra stress of going to a sale barn and the additional hauling, adjustment period. We have had a lot of positive comments about this change and hope it will help us to better serve you and the cattle we will be offering.

This year we have an excellent group of 15 coming 2 year old bulls with extra muscle, performance, and quality second to none! Our performance packed yearlings are loaded with thickness, length, and volume and are backed by great carcass & maternal bloodlines. Our cattle are selected for a balance of traits with performance as the priority.

All cattle are at OHR and can be viewed here prior to the sale. We welcome you to come and take a look ahead of the sale. We are just 20 minutes NW of Fargo with some of the region's best dining and shopping opportunities. We are continuing to collect data on the sale cattle and will have that available to you prior to the sale also. All bulls in the sale will be tested for BVD and our herd is Johnes Free. Again, we will be offering a \$50 discount if you take your bulls on sale day or we will keep your bulls until April 1st.

Our family has been in the registered cattle business since 1936 and our commitment to the cattle industry has never been stronger. We are here to serve you! Contact us if you have questions or need more information prior to the sale. We invite you to be with us on February 19th.

Sincerely,
The Olsons



The Olsons (top clockwise): Edward, Caryn, Carl, Casey, Craig & Jeanne

RED OHR ANGUS

Polled Herefords

"We Breed Excitement"

The Olsons

Edward, Jeanne, Carl, Craig and Caryn
16068 24 St. S.E. ■ Argusville, ND 58005

Email: olsoncandc@aol.com

Phone/Fax: (701) 484-5779

Ed's cellular: (701) 238-3601

Carl's cellular: (701) 361-0684

www.ohrredangus.com



~ 2008 Born Bulls ~

1

OHRR RAMS CENTURY 165-9U

OHRR 9U 1/27/2008 100% 1A 1265332

OHRR 10H Dakota Rambler 75R OHRR Dakota Copper 29K

Sire: OHRR Ms Scarlett 10H

OHRR 42L Bakers Honey 16S RED Bakers Century

Dam: OHRR Macs Honey 42L

Dam is first calf heifer doing a great job. These young females are amazing. Unique pedigree with Canadian & black breeding on damside. Note low birth to high weaning.

BW	3.8
WW	35
YW	52
MILK	16
TM	34
STAY	12
MARB	-.05
REA	.18
FAT	-.01
BW	70
WW	691
YW	1088

2

OHRR DAK PORPECTOR 62M-10U

OHRR 10U 1/28/2008 100% 1A 1265360

RED Fine Line Mulberry 26P RED Compass Mulberry 449M

Sire: RED Dus Fayette 8G

OHRR 9502 Rams Eve 62M LCHMN Rampage 198E

Dam: MESSMER Ophelia 9502

Dam is maternal sib to Dakota Copper-out of Rampage. She's rock solid and her calves are always at the top. MPPA=103. 10U is sired by popular Canadian sire Mulberry-Top notch genetics & production. Herd bull here.

BW	3.8
WW	40
YW	68
MILK	21
TM	41
STAY	10
MARB	-.02
REA	-.12
FAT	-.01
BW	95
WW	696
YW	1174



3

OHRR MAHGNY BERRY 15L-11U

OHRR 11U 1/28/2008 100% 1A 1265396
RED Fine Line Mulberry 26P RED Compass Mulberry 449M
 Sire: RED Dus Fayette 8G

OHRR 65H Mahogany 15L GLACIER Explorer 740
 Dam: OHRR 508 Mahogany 65H

BW	3.8
WW	35
YW	52
MILK	19
TM	34
STAY	10
MARB	-.01
REA	-.27
FAT	.00
BW	84
WW	723
YW	1254

One of the best individuals in our offering in our opinion. We will use this bull in '09. Quality runs deep in every direction here. Herd bull for sure! We will share this bull with you. ½ interest, ½ possession.



Lot 3

Lot 3's Dam ->



4

OHRR JUSTA RAMBLER 836-12U

OHRR 12U 1/28/2008 100% 1A 1265373
OHRR 10H Dakota Rambler 75R OHRR Dakota Copper 29K
 Sire: OHRR Ms Scarlett 10H

MISSBHR Justice 846 RD Western Justice
 Dam: MISS RHP Deal 331

BW	2.5
WW	29
YW	46
MILK	17
TM	31
STAY	9
MARB	-.07
REA	.08
FAT	.00
BW	78
WW	639
YW	1205

Dam is older cow that has come through every year. Out of 75R, 29K, Rampage--Note famous Copperlass 1B. 846 heifer topped females in '06 Red Power Sale at 3500.



Lot 4



5

OHRR DAKOTA VANTAGE 70R-15U

OHRR 15U 2/1/2008 100% 1A 1265366

OHRR 10H Dakota Rambler 75R OHRR Dakota Copper 29K

Sire: OHRR Ms Scarlett 10H

OHRR 15M Advanna Fayet 70R 4L Advantage R9N

Dam: OHRR 38K Fayet 15M

Super R Cow here by R9N going back to Explorer & 38K. 70R (MPPA: 103) first calf was a Santa Sale IV beauty sold to Lucht's in MT. Great EPD's super performance--just look at these numbers! Herd bull alert!

BW	2.6
WW	38
YW	61
MILK	22
TM	41
STAY	12
MARB	-.09
REA	-.02
FAT	.00
BW	83
WW	754
YW	1221

6

OHRR RD RED SPREAD 023 17U

OHRR 17U 2/1/2008 100% 1A 1265330

WR Mr. Red Dawg 5335 BUF CRK Valentino N031

Sire: TMAS Ms Fortune 114

GMRA Juana 023 LCHMN Red Spread 1271F

Dam: GMRA Juana 329

Wow, numbers don't lie here---EPD's, MPPAs Dam: 103, GD 102, super weights and check the 2 year old pen for maternal brother 50T, another great one. Help yourself to one of the best bulls we have to offer from '08 (or '07)!!!

BW	2.7
WW	46
YW	84
MILK	20
TM	43
STAY	14
MARB	-.11
REA	.27
FAT	.01
BW	56
WW	697
YW	1246



Lot 6

Lot 6's Dam ->



7

OHRR 216S DAKOTA CUB 21U

OHRR 21U 2/2/2008 100% 1A 1265366

GLACIER Cub 446 GLACIER Griz 146

Sire: GLACIER Fritz 241

OHRR 18B Dakota Foxy 216S OHRR Dakota Copper 29K

Dam: ROBERTS Pr-Foxy 18B

Wow factor here! Need a great performance bull out of a super female line that's a 5 Star heifer bull? -- Here he is! Not after you see these weights with such low birth and high milk & weaning. Dam is an ET out of our highest MPPA cow!

BW	-3.2
WW	25
YW	46
MILK	23
TM	34
STAY	NA
MARB	NA
REA	NA
FAT	NA
BW	54
WW	692
YW	1132



8

OHRR RED ADVANTAGE 102R-23U

OHRR 23U 2/2/2008 100% 1A 1265380

WR Mr. Red Dawg 5335

BUF CRK Valentino N031

Sire:

TMAS Ms Fortune 114

OHRR 2M Adv. Sharee 102R

4L Advantage R9N

Dam:

OHRR 503 Copper Sharee 2M

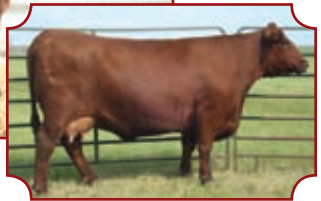
A favorite pedigree at OHR--Damside sire R9N favorite cow 2M by Copper Rob Dam Sharee 102R's second calf & a good one! Sharee 503 had 4 daughters in herd. Red Dawgs are super red meat bulls!

BW	.09
WW	35
YW	66
MILK	25
TM	42
STAY	15
MARB	-.07
REA	.28
FAT	.01
BW	74
WW	661
YW	1216



Lot 8

Lot 8's Grand Dam - >



9

OHRR 25R DAKOTA TRACKER 26U

OHRR 26U 2/5/2008 100% 1A 1265339

WR Mr. Red Dawg 5335

BUF CRK Valentino N031

Sire:

TMAS Ms Fortune 114

OHRR 42L Copper Honey 25R

OHRR Dakota Copper 29K

Dam:

OHRR Macs Honey 42L

The TRACKER. Awesome everything you could ask for here--a standout since birth. Super dam, super EPD's, super wts, low birth, beautiful muscle pattern--just simply the best!! ½ interest, full possession negotiable.

BW	0.1
WW	49
YW	86
MILK	18
TM	42
STAY	15
MARB	-.06
REA	.18
FAT	.00
BW	69
WW	838
YW	1276



Lot 9

Lot 9's Dam ->



10

OHRR DIVES RAMBLER 109S/29U

OHRR 29U 2/6/2008 50% Category III 1265399

OHRR 10H Dakota Rambler 75R OHRR Dakota Copper 29K

Sire: OHRR Ms Scarlett 10H

Unidentified Dam Unidentified Sire

Dam: Unidentified Dam

Waiting for DNA on dam--she is 100% 1A but results are not back. -So no EPD's as of yet. A very good bull that will have complete info. by sale day.

BW	NA
WW	NA
YW	NA
MILK	NA
TM	NA
STAY	NA
MARB	NA
REA	NA
FAT	NA
BW	73
WW	688
YW	1179

11

OHRR MACKS LANDSLIDE 28R-34U

OHRR 34U 2/9/2008 100% 1A 1265340

OHRR 107J Landslide 113R PIE Avalanche 381

Sire: SHHM Annabelle 107J

OHRR 745 Macks Tana 28R RBRTS Mcintosh II 344

Dam: PFFR Ms Thunderheart 745

Out of the great 113R traces back to super females 107J and 745. Dam 28R is one of our best 3 year olds. Parental BW EPD's are 3.0 for sire and 0.8 for dam! If you saw 28R's '07 Heifer you'd want to own this bull. She started Santa Sale IV and sold for 3750 to the Kerslakes in Oregon.

BW	5.5
WW	37
YW	61
MILK	17
TM	35
STAY	11
MARB	.00
REA	.12
FAT	.00
BW	98
WW	700
YW	1238



Lot 11

Lot 12's Dam as Heifer Calf ->



12

OHRR MR RED HAWK 9S-39U

OHRR 39U 2/10/2008 100% 1A 1265329

OHRR 142 Mr Red Hawk 204S LCC Major League A502M

Sire: EEA 142

OHRR 36P Copper Classy 9S OHRR 99L Copper Hi Ho 108N

Dam: OHRR 25K Prairie Diva 36P

We think sometimes the computer lies!! 83# BW should not become a 5.0 when sire is 1.4 and dam is 1.4--Not many 2 year olds wean their first calf at 798#--This dam has a 104 MPPA on first try. If you have value a moderate BW & superior AWW put this guy in your program.

BW	5.0
WW	48
YW	73
MILK	18
TM	42
STAY	11
MARB	-.03
REA	.15
FAT	-.01
BW	83
WW	798
YW	1172



13**OHRR MR. MULBERRY 56N-43U**

OHRR 43U 2/12/2008 100% 1A 1265357

RED Fine Line Mulberry 26P RED Compass Mulberry 449M

Sire: RED Dus Fayette 8G

OHRR 63G Adv Mahogany 56N RBJR Advance A709

Dam: OHRR Ms Mahogany 63G

A nice Mulberry son out of one of our most phenotypically beautiful females. 43U had some health issues early on and is behind the pack in pounds but genetically very sound. His EPD's are awesome & he goes back to some of the best Super OHT females 65H & 508.

BW	1.5
WW	43
YW	77
MILK	18
TM	40
STAY	10
MARB	.01
REA	-.02
FAT	-.01
BW	79
WW	550
YW	1163

**Lot 13****Lot 13's Grand Dam ->****14****OHRR RED LANDSLIDE 48R-45U**

OHRR 45U 2/12/2008 100% 1A 1265352

OHRR 107J Landslide 113R PIE Avalanche 381

Sire: SHHM Annabelle 107J

OHRR 9930 Red Canyon Rob 48R SRR Red Canyon 213

Dam: SEXTON'S Semone 9930

Awesome parents here, grand dam 9930 has produced many dollars for OHR Program. Her '08 sale bull sold to Rick Waller at Holdrege, NE for 4300. 113R is out of the awesome Annabelle 107J -- here 209P daughter sold for \$10,000 in our '07 Dams of Distinction Cow Sale.

BW	1.8
WW	32
YW	61
MILK	18
TM	34
STAY	13
MARB	.06
REA	.16
FAT	.01
BW	75
WW	698
YW	1288

**Lot 14's Sire****Lot 14's Grand Dam ->**

15**OHRR DAKOTA RED 87R-48U**

OHRR 48U 2/14/2008 100% 1A 1265376

WR Mr. Red Dawg 5335

BUF CRK Valentino N031

Sire:

TMS Ms Fortune 114

OHRR 104M Copper Casey 87R

OHRR Dakota Copper 29K

Dam:

OHRR 1098 Ms Casey 104M

This bull is no accident. Dam 87R might produce more #'s per body wt than any other at OHR. Her T daughter was chosen for Santa V where she was purchased by the Pifer's at 2500. Red Dawg bulls are some of the best in the country!

BW	3.0
WW	49
YW	82
MILK	17
TM	42
STAY	13
MARB	-.06
REA	.05
FAT	.01
BW	82
WW	774
YW	NA

**Lot 15****16****OHRR COPPER KARUBA 112H-51U**

OHRR 51U 2/15/2008 100% 1A 1265367

OHRR Dakota Copper 29K

LCHMAN Copper Rob 1204D

Sire:

MESSMER Ophelia 9502

PFFR Ms Thunderheart 745

FCC Thunderheart 4002

Dam:

MS Hammel Sysco 506

Dam is Jeanne's old favorite cow--only bulls sell females here. 745 is a beautiful femine, perfect uddered cow that always has a good calf---This will be her last. Note her all time MPPA is 102--great job for 12 year old.

BW	1.6
WW	35
YW	59
MILK	18
TM	35
STAY	12
MARB	-.04
REA	-.08
FAT	.01
BW	84
WW	736
YW	1203

**Lot 16**

17

OHRR COPPER RAMBLER 54P-53U

OHRR 53U 2/18/2008 100% 1A 1265356

OHRR 10H Dakota Rambler 75R OHRR Dakota Copper 29K

Sire: OHRR Ms Scarlett 10H

OHRR 214 Copper Lass 54P OHRR 06K Dak Copper 5M

Dam: PFFR Ms Lass 214

We don't have a pedigree here that reads better than this one--every female on this page is a great one--every bull like wise. Dam 54P has an awesome earned 105 MPPA--not easy in this herd. Keep all his daughters!!

BW	2.3
WW	36
YW	57
MILK	21
TM	39
STAY	12
MARB	-.04
REA	.10
FAT	-.01
BW	79
WW	627
YW	1101

18

OHRR RED DIVIDE 24K-56U

OHRR 56U 2/19/2008 100% 1A 1265338

LCC Divide 1435K GLACIER Divide 310

Sire: CJ'S HoboMable

OHRR Sistr Beauty 25K HLH Buster 406 603

Dam: SAR Red Beauty 3091

One of the last sons of our great Divide bull--always popular for this thickness & phenotype! Dam 25K is one of Ed's favorite cows. Help yourself to a different & unique pedigree in this 56K bull. MGD is red out of black parents.

BW	2.3
WW	35
YW	61
MILK	13
TM	31
STAY	8
MARB	-.09
REA	-.11
FAT	-.01
BW	87
WW	691
YW	1134

19

OHRR DAK RAMBLER 104M-65U

OHRR 65U 2/26/2008 100% 1A 1265381

OHRR 10H Dakota Rambler 75R OHRR Dakota Copper 29K

Sire: OHRR Ms Scarlett 10H

OHRR 1098 Ms Casey 104M LCHMN Rampage 1098E

Dam: Ms Casey 118

Double bred Rampage--known for red meat & beautiful females--some of the best ever here 10H, (\$17,500 to 6 mile RA--Canada in our '07 cow sale) 15F (\$4,750 to Gregg Ranches, SD, and Casey 118 a foundation supercow!! Rambler 75R is one of our best bulls ever - 15,000 ½ in '07 sale.

BW	1.6
WW	24
YW	35
MILK	17
TM	29
STAY	10
MARB	-.06
REA	-.12
FAT	.00
BW	86
WW	665
YW	1133

20

OHRRR 220S RHWK LANDSLIDE 81U

OHRR 81U 3/14/2008 100% 1A 1265388

OHRR 142 Mr. Red Hawk 204S LCC Major League A502M

Sire: EEA 142

OHRR 107J Advanna 220S 4L Advantage R9N

Dam: SHHM Annabelle 107J

Dam is another 2 year old that eats up the charts-- (105 MPPA) EPD's & performance speak for themselves. Grand dam R903 & 107J (MPPA=106) are simply the best! Major League is one of the most highly promoted bulls in the breed. EEA 142=109 MPPA. Wow, this is a great one!

BW	2.1
WW	41
YW	64
MILK	21
TM	39
STAY	11
MARB	NA
REA	NA
FAT	NA
BW	87
WW	805
YW	1307



21**OHRR 413R RED VISION 85U**

OHRR 85U 3/16/2008 100% 1A 1265389
WR Mr. Red Dawg 5335 BUF CRK Valentino N031
 Sire: TMAS Ms Fortune 114
Ms Sweet Vision of 4L 413R 4L Super Vision R2292
 Dam: Ms Advancer of 4L RM23

BW	3.2
WW	55
YW	100
MILK	21
TM	49
STAY	14
MARB	-.04
REA	.50
FAT	-.01
BW	80
WW	828
YW	1322

Here is a guy for the future—one of our all-time most popular bulls - he does it all - great dam. Super EPD's—awesome performance & a beautiful sight phenotypically – he has generated a lot of interest Red Vision—a bull for the future. Maternal brother sells as lot 43. ½ interest, possession terms sale day.

**Lot 21****Lot 21's Dam****2007 National Sr. Champion Female ->****22****OHRR MC RED CANYON 91F-100U**

OHRR 100U 4/20/2008 100% 1A 1265372
SRR Red Canyon 213 LCHMN GrandCanyon 1244G
 Sire: BLUE Ridge Kima 950
OHRR Macs Sophia 91F RBRTS McIntosh II 344
 Dam: LMB St Sophia 704

BW	1.4
WW	31
YW	54
MILK	15
TM	30
STAY	12
MARB	.08
REA	.16
FAT	.00
BW	75
WW	813
YW	1338

How many 13 year old cows wean 813 lbs—only one we can think of—91F has been solid at OHR and more than earned her way. This bull has proven parents. He will do a great job in your program.

Olson's Red Power Advantage:

- + More performance, muscle & maternal excellence.
- + Carcass, performance, scrotal & pelvic data available.
- + Bulls tested for BVD & from Johnes Free herd.
- + Bulls developed on roughage ration to ensure soundness.
- + Free wintering on bulls over \$2500, 300 mile delivery.
- + \$50 discount if you take your bull home sale day.
- + Reputation breeder of quality registered cattle since 1936!



~ 2008 ET Bulls ~

23

OHRR DAKOTA MACK 203U

OHRR 203U 3/7/2008 100% 1A 1272680

RBRTS McIntosh II 344

MCINTOSH Red 910

Sire:

RBRTS Class Lass 9447

MESSMER Ophelia 9502

LCCHeaven or Bust 1000B

Dam:

NODAK Lady Licorice

BW	2.1
WW	34
YW	53
MILK	13
TM	30
STAY	NA
MARB	NA
REA	NA
FAT	NA
BW	ET
WW	705
YW	1210

Son of OHR's premier foundation herd sire Mack 344 out of Dakota Copper 29K's dam. We think this pedigree is as good as it gets. We're using a full brother here--calves will be on the ground by sale day!



Lot 23's Full Brother

Lot 23's Full Sister ->



24

OHRR 9502 COPPER ROB 205U

OHRR 205U 3/10/2008 100% 1A 1272682

LCHMN Copper Rob 1204D

LMAN King Rob 8621

Sire:

COPPER Lass 2392

MESSMER Ophelia 9502

LCCHeaven or Bust 1000B

Dam:

NODAK Lady Licorice

BW	-1.4
WW	24
YW	45
MILK	24
TM	36
STAY	NA
MARB	NA
REA	NA
FAT	NA
BW	89
WW	725
YW	1155

The only full brother to the very popular ABS sire Dakota Copper 29K--actual WW, 725 lbs--Breeders over the world are using & liking Dakota Copper--here's your chance to own a truly special bull! Retaining an interest, terms sale day.



Lot 24

Lot 24's Full Brother ->



25**OHRR 9502 DAKOTA VISION 202U**

OHRR 202U 3/7/2008 100% 1A 1272679

4L Super Vision R2292

GLACIER Chateau 744

Sire:

4L Mr Rambo R709

MESSMER Ophelia 9502

LCCHeaven or Bust 1000B

Dam:

NODAK Lady Licorice

One of three full brothers in the sale—which is best, we don't know—you decide. They will all do a great job in any program. Add some Dakota Vision to your herd.

BW	0.9
WW	31
YW	54
MILK	19
TM	35
STAY	NA
MARB	NA
REA	NA
FAT	NA
BW	ET
WW	685
YW	1164

26**OHRR 9502 DAKOTA VISION 204U**

OHRR 204U 3/9/2008 100% 1A 1272681

4L Super Vision R2292

GLACIER Chateau 744

Sire:

4L Mr Rambo R709

MESSMER Ophelia 9502

LCCHeaven or Bust 1000B

Dam:

NODAK Lady Licorice

Another Super Vision/9502. These bulls have unlimited potential to take your program to the next level. Help yourself to one of the best.

BW	0.9
WW	31
YW	54
MILK	19
TM	35
STAY	NA
MARB	NA
REA	NA
FAT	NA
BW	ET
WW	685
YW	1158

27**OHRR 9502 DAKOTA VISION 206U**

OHRR 206U 3/11/2008 100% 1A 1272683

4L Super Vision R2292

GLACIER Chateau 744

Sire:

4L Mr Rambo R709

MESSMER Ophelia 9502

LCCHeaven or Bust 1000B

Dam:

NODAK Lady Licorice

ET: Super Vision out of dam of ABS super sire Dakota Copper 29K. Potential is unlimited in this young herd bull. We think these 2 year olds will be the best to sell anywhere this season.

BW	0.9
WW	31
YW	54
MILK	19
TM	35
STAY	NA
MARB	NA
REA	NA
FAT	NA
BW	83
WW	680
YW	952



Lot 25, 26, & 27's Sire



28**OHRR 9502 DAKOTA CUB 201U**

OHRR 201U 3/4/2008 100% 1A 1272684

BW	1.2
WW	35
YW	60
MILK	17
TM	34
STAY	NA
MARB	NA
REA	NA
FAT	NA
BW	74
WW	710
YW	1061

MILK Creek Cub 722

GLACIER Cub 446

Sire:

MLK CRK Lakota 152-Hobo

MESSMER Ophelia 9502

LCC Heaven or Bust 1000B

Dam:

NODAK Lady Licorice

9502 – Dam of lead ABS sire Dakota Copper 29K has had offspring by many bulls—all have been excellent calves. We have daughters in the herd by four sires—all are excellent cows!! These genetics are solid & nothing but the best! Herd bull material here!

**Lot 28's Sire****29****OHRR 10H DAKOTA DATA 207U**

OHRR 207U 3/14/2008 100% 1A 1272685

BW	2.3
WW	36
YW	54
MILK	23
TM	41
STAY	NA
MARB	NA
REA	NA
FAT	NA
BW	83
WW	680
YW	1050

SHOCO Data

SHOCO Sir Robin

Sire:

VDAR Blackana 303

OHRR Ms Scarlett 10H

LCHMN Rampage 1098E

Dam:

OHRR Ms 925 Scarlett 15F

ET bull. Raised in commercial herd. Son of our super cow 10H--(MPPA 104) sold in out '07 cow sale to Six Mile Red Angus-Sask @ \$17,500. As perfect a cow as we've seen. This herd bull will be an asset to your program!

**Lot 29's Dam**

~ 2007 Born Bulls ~

" This powerful group of 15 2-year old bulls have been fertility tested and are ready to go to work. Most of these bulls will work well on heifers yet have the performance and muscle to add pounds to your calf crop. They are from our very best cowfamilies and backed by top carcass and performance bloodlines."

30 OHRR 023 RED CANYON 50T

OHRR 50T 2/11/2007 100% 1A 1197012

SRR Red Canyon 213 LCHMN GrandCanyon 1244G

Sire: BLUE Ridge Kima 950

GMRA Juana 023 LCHMN Red Spread 1271F

Dam: GMRA Juana 329

Highly recommended bull here. 023 cow is a beauty & a great producer--her calves always demand top dollar. Moderate cow with perfect 10 udder--looks & produces like a 3 year old! One of the best in the sale! Maternal brother to Lot 6.

BW	3.3
WW	46
YW	83
MILK	21
TM	44
STAY	14
MARB	.10
REA	.24
FAT	.00
BW	84
WW	669
YW	1213



Lot 30

Lot 30's Dam ->



31 OHRR 95R-RED MAHOGANY 104T

OHRR 104T 3/7/2007 100% 1A 1197012

OHRR 24K Red Canyon 6R SRR Red Canyon 213

Sire: OHRR 30H Sophia 24K

OHRR 15L DAK Mahogany 95R OHRR Dakota Copper 29K

Dam: OHRR 65H Mahogny 15L

A March coming 2 year old--dam 95R rasied 2nd top female in Santa Sale V @ \$4,500 to the Berke Kids in Eustis, NE. 6R daughter topped Santa IV @ \$3,750 to Kerlakes in OR. Good news on this guy.

BW	1.3
WW	25
YW	45
MILK	18
TM	30
STAY	12
MARB	.06
REA	-.03
FAT	.00
BW	77
WW	591
YW	NA

2009 Spring Red Angus Breed EPD averages - (Non Parent)

BW	WW	YW	Milk	TM	Stay	Marb	REA	Fat
0.3	32	56	17	32	9	.07	.07	0



32**OHRR 38H RED CANYON 106T**

OHRR 106T 3/12/2007 100% 1A 1196954
SRR Red Canyon 213 LCHMN GrandCanyon 1244G
 Sire: BLUE Ridge Kima 950

RED Howe Ms Flame 38H RED BVR Rab-Star 56C
 Dam: RED Ms Flame DDH 83C

BW	3.1
WW	39
YW	67
MILK	17
TM	36
STAY	14
MARB	.13
REA	.16
FAT	.00
BW	76
WW	680
YW	1209

Complete, well muscled bull from our carcass & performance sire 213 and foundation Canadian-bred dam that never misses & consistently gives us low BW & top weaning. We used this bull on replacement females here in '08. Herd bull here.

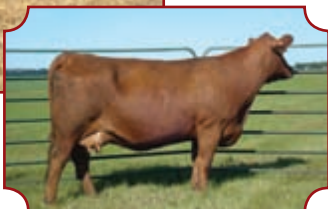
**Lot 32****Lot 32's Dam ->****33****OHRR 21L ROXY'S RED DAWG 108T**

OHRR 108T 3/14/2007 100% 1A 1196938
WR Mr. Red Dawg 5335 BUF CRK Valentino N031
 Sire: TMAS Ms Fortune 114

OHRR Foxy Roxy 21L LCHMN Rampage 1098E
 Dam: ROBERTS PR-Foxy 18B

BW	0.6
WW	32
YW	61
MILK	19
TM	34
STAY	13
MARB	-.01
REA	.05
FAT	.01
BW	74
WW	530
YW	NA

Powerful sire Red Dawg and dam 21L goes back to 18B (MPPA 110)--highest in our herd. Should be a good one!

**Lot 33****Lot 33's Dam ->**

34**OHRR 36P DAK. RAMBLER 111T**

OHRR 111T 3/16/2007 100% 1A 1196953

OHRR 10H Dakota Rambler 75R OHRR Dakota Copper 29K

Sire: OHRR Ms Scarlett 10H

OHRR 25K Prairie Diva 36P LCC Divide 1435K

Dam: OHRR Sister Beauty 25K

Son of Rambler 75R—our '07 sale topper at \$15,000 in ½ interest to Gills and 6 syndicate owners. Dam 36P traces back to black breeding.

BW	0.5
WW	26
YW	44
MILK	15
TM	28
STAY	9
MARB	-.07
REA	.02
FAT	-.01
BW	71
WW	513
YW	NA

35**OHRR 14M GRAND MAGIC 123T**

OHRR 123T 3/30/2007 100% 1A 1196932

WR Mr. Red Dawg 5335 BUF CRK Valentino N031

Sire: TMAS Ms Fortune 114

OHRR 65H Grand Mahogany 14M LCHMN Grand Canyon 1244G

Dam: OHRR 508 Mahogany 65H

Out of our record selling 14M cow @ \$20,000 in our '07 cow sale to Link Ranches in PA. She's simply the best. A son topped our '06 sale at \$6,700 to Schumans @ Oakes. She raised twins in '07 and has been in transplant since—we used Magic on our heifers last year!

BW	2.8
WW	47
YW	85
MILK	22
TM	45
STAY	15
MARB	.00
REA	.30
FAT	.02
BW	69
WW	655
YW	NA

**<- Lot 35's Dam****Lot 35's Grand Dam ->**

36**OHRR 18B ADVANTAGE 131T**

OHRR 131T 4/15/2007 100% 1A 1197003
 4L Advantage R9N PERKS Advancer 9088
 Sire: 4L Ms Make My Day R903

ROBERTS PR-Foxy 18B RED BBCC Presidio 5Z
 Dam: RBRTS Foxy Roxy 2398

BW	2.5
WW	40
YW	71
MILK	22
TM	42
STAY	10
MARB	.03
REA	.14
FAT	.00
BW	77
WW	613
YW	NA

Last calf from Roberts Foxy 18B, our highest MPPA (110) donor cow & foundation female. We purchased her from the Cliff Haugen BJR Ranch in '94 & she's never missed. R9N bulls & females are in demand by us & our customers. Great EPD's here.

37**OHRR 68J ADVANTAGE 133T**

OHRR 133T 4/21/2007 100% 1A 1196983
 4L Advantage R9N PERKS Advancer 9088
 Sire: 4L Ms Make My Day R903

OHRR Rams Samaria 68J LCHMN Rampage 1098E
 Dam: RBRTS Samaria-BMR 5114

BW	1.8
WW	31
YW	56
MILK	22
TM	37
STAY	11
MARB	-.09
REA	.09
FAT	.00
BW	74
WW	530
YW	NA

R9N & dam R903 were Senior Champion Pair at the National RA Show. His bulls are thick & muscular & daughters excellent milkers. Dam 68J is foundation Rampage daughter and grand dam 5114 has MPPA of 107.

38**OHRR DJH COPPERLAD 144T**

OHRR 144T 8/22/2007 100% 1A 1265404
 OHRR Dakota Copper 29K LCHMAN Copper Rob 1204D
 Sire: MESSMER Ophelia 9502

BJR CCC Copperlass 0120 LMAN King Rob 8621
 Dam: BJR Copperlass 9F

BW	0.7
WW	34
YW	60
MILK	18
TM	35
STAY	15
MARB	-.02
REA	-.01
FAT	.01
BW	75
WW	610
YW	NA

A twin. Dam 0120 is a beautiful, perfect-uddered donor cow. Several ET daughters in production here & at Hendersons in Texas. A great bull and a sure thing for your program.



Lot 38's Dam ->



3 Full Sibs

39

OHRR 9502 DAKOTA MACK 204T

OHRR 204T 2/22/2007 100% 1A 1272675

RBRTS McIntosh

MCINTOSH Red 910

Sire:

RBRTS Class Lass 9447

MESSMER Ophelia 9502

LCC Heaven or Bust 1000B

Dam:

NODak Lady Licorice

Raised in commercial herd with no creep. Superior genetics here—9502 is dam of popular ABS sire OHRR Dakota Copper 29K.

BW	2.1
WW	34
YW	53
MILK	13
TM	30
STAY	NA
MARB	NA
REA	NA
FAT	NA
BW	ET
WW	450
YW	NA

40

OHRR 9502 DAKOTA MACK 206T

OHRR 206T 2/24/2007 100% 1A 1272677

RBRTS McIntosh

MCINTOSH Red 910

Sire:

RBRTS Class Lass 9447

MESSMER Ophelia 9502

LCC Heaven or Bust 1000B

Dam:

NODak Lady Licorice

What a combination this is—out of our foundation dam of Dakota Copper 29K. We're using a full brother in our herd. Bull power & maternal power in one package!

BW	85
WW	556
YW	NA

41

OHRR 9502 DAKOTA MACK 207T

OHRR 207T 2/24/2007 100% 1A 1272678

RBRTS McIntosh

MCINTOSH Red 910

Sire:

RBRTS Class Lass 9447

MESSMER Ophelia 9502

LCC Heaven or Bust 1000B

Dam:

NODak Lady Licorice

Check out full sibs in this sale—three 2 year olds and one yearling. We are using another 344/9502 that sold in '08 sale. These are excellent bulls.

BW	ET
WW	510
YW	NA

42

OHRR 9502 AVALANCHE 205T

OHRR 205T 2/23/2007 100% 1A 1272676

PIE Avalanche 381

PERKS Advance 121R

Sire:

PIE Ms Grand C 036

MESSMER Ophelia 9502

LCC Heaven or Bust 1000B

Dam:

NODak Lady Licorice

ET—Raised in a commercial herd without creep. Excellent genetics—dam of 381 has 110.8 MPPA. 9502 is dam of Dakota Copper 29K—internationally popular sire raised here at OHR.

BW	2.7
WW	36
YW	66
MILK	11
TM	29
STAY	NA
MARB	NA
REA	NA
FAT	NA
BW	ET
WW	450
YW	NA



43**OHRR COPPER RAMBLER 208T**

OHRR 208T 2/25/2007 100% 1A 1199591

OHRR Dakota Rambler 75R OHRR Dakota Copper 29K

Sire: OHRR Ms Scarlett 10H

BJR CCC Copperlass 0120 LMAN King Rob 8621

Dam: BJR Copperlass 9F

BW	2.1
WW	35
YW	60
MILK	20
TM	37
STAY	14
MARB	.01
REA	.07
FAT	.01
BW	93
WW	600
YW	NA

Excellent bull here. Copperlass 0120 has a great show record and flushing history. This pedigree is loaded with outstanding individuals. Big time herd bull!

**Lot 43****Lot 43's Dam ->****44****OHRR 413 COPPER VISION 209T**

OHRR 209T 2/27/2007 100% 1A NA

OHRR Dakota Copper 29K LCHMAN Copper Rob 1204D

Sire: MESSMER Ophelia 9502

MS Sweet Vision of 4L 413R 4L Super Vision R2292

Dam: Ms Advancer of 4L RM23

BW	1.4
WW	38
YW	68
MILK	20
TM	39
STAY	NA
MARB	NA
REA	NA
FAT	NA
BW	ET
WW	410
YW	NA

Raised in a commercial herd with no creep--Genetics prove themselves in tough circumstances. This is a great individual--check his yearling maternal sib 85U. Maternal brother to Lot 22. Big time herd bull here!

**Lot 44****Lot 44's Dam ->**

~ Reference Sires ~

A OHRR DAKOTA COPPER 29K

OHRR 29K	1/28/2000	100% 1A	709597
LCHMAN Copper Rod 1204D	LMAN King Rob 8621		
Sire:	Copper Lass 2392		
MESSMER Ophelia 9502	LCC Heaven or Bust 1000B		
Dam:	NODak Lady Licorice		

BW	-.07
WW	38
YW	60
MILK	21
TM	40
STAY	15
MARB	-.05
REA	-.05
FAT	.01
BW	75
WW	802
YW	NA

Senior herdsire that keeps birh weights down and sires excellent structure, good muscling and good females. He was 2000 World Beef Expo Champion and NILE Bull Calf Champion in Billing. Owned with Broken Heart and ABS Global - semen available.

B WR MR RED DAWG 5335

5335 WR	3/25/2005	100% 1A	1046249
BUF CRK Valentino N031	BECKTON Julian GG B571		
Sire:	BUF CRK Primrose 5679		
TMAS Ms Fortune 114	LMAN King Rob 8621		
Dam:	STRAKA Ms Fortune 4109		

BW	2.4
WW	49
YW	99
MILK	21
TM	45
STAY	17
MARB	-.03
REA	.47
FAT	.01
BW	86
WW	798
YW	1607

World Record REA at 20.4". High performance, extra long and his dam has a 107 MPPA. Note the power in his numbers and progeny! Owned with Thomas, Weidenbach, Gill Llyod, Double Diamond and Harbin. Semen available through Big Red Genetics.

C OHRR 10H DAKOTA RAMBLER 75R

OHRR 75R	2/22/2005	100% 1A	1025344
OHRR Dakota Copper 29K	LCHMAN Copper Rob 1204D		
Sire:	MESSMER Ophelia 9502		
OHRR Ms Scarlett 10H	LCHMN Rampage 1098E		
Dam:	OHRR Ms 925 Scarlett 15F		

BW	3.7
WW	41
YW	63
MILK	22
TM	42
STAY	12
MARB	-.05
REA	.14
FAT	.00
BW	94
WW	778
YW	1477

A top Dakota Copper son from one of our greatest cow families. 16.3 REA and big performance also. Topped our '06 sale \$15,000 (1/2) Owned with Gill Red Angus and the Rambler Syndicate. Semen available through Big Red Genetics.

D SRR RED CANYON 213

SNSN 213	1/31/2002	100% 1A	1046249
LCHMN Grand Canyon 1244G	BUF CRK CHF 824-1658		
Sire:	KRN Reba's Robin		
BLUE Ridge Kima 950	GLACIER Logan 210		
Dam:	BLUE Ridge Kima 806		

BW	3.6
WW	52
YW	89
MILK	22
TM	48
STAY	16
MARB	.32
REA	.27
FAT	.00
BW	97
WW	746
YW	NA

Senior herdsire that adds performance and muscle. Note the high carcass EPDs too. He's been leaving nice daughters also. Owned with Strawberry Ridge Reds - Semen available from OHR.





OHRR Dakota Copper 29K



WR Mr. Red Dawg 5335

Dam of Red Dawg ->



OHRR 10H Dakota Rambler 75R

10H, Dam of 75R ->



SRR Red Canyon 213



Congratulations Lodoen Family!



Champion Red Angus Bull Calf

2008 National Western Stock Show exhibited by the Lodoen Family,
Westhope, ND Purchased in dam from OHR in our 2007
Dams of Distinction Female sale.
Paternal brothers sell as lots 2,3, and 13.

More Choice...

Less Corn!

Genetic Risk Management

- Increase Percentage Choice
- Decrease Days on Feed
- Improve Conversion
- Improve Disposition & Decrease Dark Cutters
- Decrease Summer Stress
- Access Angus Product Lines
- USDA Approved Source & Age Verification sufficient for substantiating COOL claims

MARC CYCLE VII DATA Report 22

Breed of Sire	% USDA Choice
Red Angus	89.9
Angus	87.6
Simmental	65.7
Hereford	65.4
Charolais	61.9
Gelbvieh	57.7
Limousin	56.9

Building Better Beef...

Red Angus

(940) 387-3502 • RedAngus.org

Watch for our continued series



The Ranchers' Guide...

Information for the profit minded producer

Exclusive Broadcast
Available Free at

DVAuction
Broadcasting Your Time Horizons

~ Red Angus Heifers ~

45

OHRR MACS KIMA 19H-16U

OHRR 16U 2/1/2008 98.1% 1B 1265333
SRR Red Canyon 213 LCHMN Grand Canyon 1244G
 Sire: BLUE Ridge Kima 950

OHRR Macs Lela 19H RBRTS McIntosh II 344
 Dam: LELAND Rimtop 416-120B

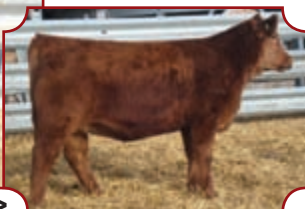
1B heifer (98.1%). Out of a foundation cow & one of our best producers. Sired by Red Canyon she'll be a great show heifer & an excellent cow. 19H's offspring have sold at the top of our sales in the past.

BW	0.5
WW	34
YW	59
MILK	18
TM	35
STAY	13
MARB	.15
REA	.23
FAT	.00
BW	71
WW	630
YW	897



Lot 45

Lot 45's Maternal Sister ->



46

OHRR 15M MS FAYET 14U

OHRR 14U 2/1/2007 100% 1A 12365331
RED Brylor Master Plan 17M BASIN Sensation 702E
 Sire: RED Brylor Bonita 66K

OHRR 38K Fayet 15M GLACIER Explorer 740
 Dam: OHRR Sistr Scarlet 38K

Nice female here out of #1 most used bull in Canada last year and a great OHR female line -- she'll be a solid cow!

BW	-.08
WW	24
YW	50
MILK	15
TM	27
STAY	NA
MARB	NA
REA	NA
FAT	NA
BW	82
WW	622
YW	834



Lot 46's Grand Dam

47

OHRR RAMS CLASSY 39R-74U

OHRR 74U 3/6/2008 100% 1A 1265344
WR Mr. Red Dawg 5335 BUF CRK Valentino N031
 Sire: TMAS Ms Fortune 114

OHRR 5E Dakota Classy 39R OHRR Dakota Copper 29K
 Dam: OHRR Ms Classy 5E

Only a March but she'll catch up! Lots of power on the damside.

BW	2.0
WW	41
YW	70
MILK	16
TM	36
STAY	.13
MARB	-.06
REA	.14
FAT	.01
BW	75
WW	595
YW	769



48**OHRR RAMBLERS HONEY 42L-24U****OHRR 24U 2/4/2008 100% 1A 1265348****OHRR 10H Dakota Rambler 75R OHRR Dakota Copper 29K**

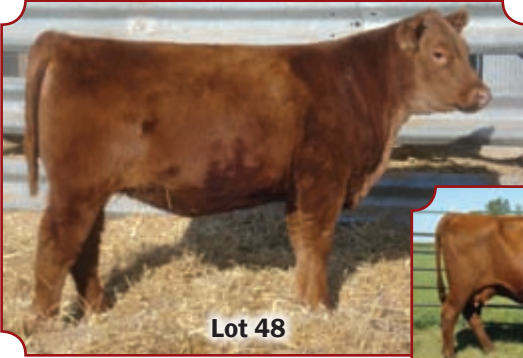
Sire: OHRR Ms Scarlett 10H

OHRR Macs Honey 42L RBRTS McIntosh II 344

Dam: BJR EMU-MAR 355-3120

BW	-.05
WW	27
YW	42
MILK	17
TM	30
STAY	12
MARB	-.03
REA	.12
FAT	-.01
BW	70
WW	580
YW	820

Moderate, well-balanced EPS's with low BW. Dam is attractive, feminine, Mack 344 daughter that has earned her keep here. Should make an excellent female!

**Lot 48****Lot 48's Dam ->****<-Lot 48's Maternal Sister****49****OHRR RED HAWK MARJA 68S-44U****OHRR 44U 2/12/2008 100% 1A 1265365****OHRR 142 Mr Red Hawk 204S LCC Major League A502M**

Sire: EEA 142

OHRR K22 Hi Ho Marja 68S OHRR 99L Copper Hi Ho 108N

Dam: JACOBSON Margie K22

BW	-.07
WW	34
YW	57
MILK	22
TM	39
STAY	11
MARB	-.03
REA	.26
FAT	.00
BW	56
WW	620
YW	842

Wow! EPD's are ideal here -- note birth to weaning spread. Excellent job for first calver 68S---Maternal granddam Margie K22 is Carl's top shelf, super cow. Red Hawk's dam EEA 142 had awesome MPPA=109! All the best in this package!

**Lot 49's Sire****68S as Rs Champion NDWS ->**

50**OHRR MS RED CLASSY 47N-62U**

OHRR 62U 2/23/2008 100% 1A 1265351

WR Mr. Red Dawg 5335 BUF CRK Valentino N031

Sire: TMAS Ms Fortune 114

OHRR 5E Copper Mack 47N OHRR Dakota Copper 29K

Dam: OHRR Ms Classy 5E

Red Classy is just that. Her dam & granddam 5E both successful show girls—Great granddams 9502, 118, & 114—all super cows!! Maternal grandsire is ABS star Dakota Copper. We'd like to keep this one!

BW	-0.4
WW	37
YW	66
MILK	13
TM	31
STAY	13
MARB	-.03
REA	.06
FAT	.01
BW	68
WW	551
YW	767

51**OHRR SKARLET FAYET 12M-66U**

OHRR 66U 2/27/2008 100% 1A 1265346

OHRR 10H Dakota Rambler 75R OHRR Dakota Copper 29K

Sire: OHRR Ms Scarlett 10H

OHRR 4K-Ultra Fayet 12M GLACIER Explorer 740

Dam: OHRR 50H Ultra Cub 4K

Here she is! Dam 12M (MPPA=102) produced top selling female in '08 Red Power Sale at \$3,500 to Link Ranch, PA. Sired by female producers 75R (GS: popular ABS sire 29K)—great EPD's, super performance. This girl will do it all!

BW	3.2
WW	34
YW	53
MILK	23
TM	40
STAY	11
MARB	-.04
REA	-.04
FAT	.00
BW	84
WW	657
YW	879

52**OHRR COPPER TARGET 1R-92U**

OHRR 92U 3/29/2008 100% 1A 1265324

OHRR Dakota Copper 29K LCHMAN Copper Rob 1204D

Sire: MESSMER Ophelia 9502

OHRR 12M Advanna Fayet 1R 4L Advantage R9N

Dam: OHRR 4K-Ultra Fayet 12M

Grand dam 12M produced top selling female in '09 Red Power Sale at \$3,500. She's young but pedigree is stacked with great individuals—this girl weighs 855 at present and should reach over 1000 by 1 year. Foundation cow here!

BW	0.6
WW	28
YW	70
MILK	21
TM	35
STAY	.13
MARB	-.05
REA	.03
FAT	.01
BW	72
WW	622
YW	1065



~ Polled Hereford Bulls ~

53 OHR EXTRA 68N 71U ET

OHRR 71U 3/5/2008 100% 1A 42936643

DR World Class 517 10H FELTONS 517

Sire: VPI Marathon Lady 0081

OHR Scarlett 68N ET VCR East Kodiak 506E

Dam: TALK Scarlett 338U

Muscle, length, pigment and a great mother—"Extra" has it all! Pedigree has 6 sires of Distinction and 4 CHB leaders. Dam is a great uddered Kodiak daughter with a 103 WWR. Grand mother produced to 16 years with a 106 WWR. Breed improver for 12 of 15 categories and in the top 20% for WW, milk, milk & growth, calving ease maternal & scrotal.

BW	3.6
WW	52
YW	79
MILK	21
TM	47
SC	1.2
REA	.03
FAT	.03
IMF	.05
BW	78
WW	750
YW	1198

54 OHR DISTINCTION415E 58U ET

OHRR 58U 2/22/2008 100% 1A 42930785

DR World Class 517 10H FELTONS 517

Sire: VPI Marathon Lady 0081

MW Sunny 415E 1ET REMITALL Boomer 46B

Dam: MW Sunny M11Z ET

Deep, thick, well muscled son of the popular World Class bull. Pedigree is loaded with sires of Distinction and CHB leaders including his sire, 2 grandsires and 2 great grandsires. His mother is an excellent Dam of Distinction with a 106 WWR. This ET bull is a breed improver for 13 of 15 categories and in the top 10% for milk, milk & growth, calving ease maternal & scrotal.

BW	4.1
WW	50
YW	81
MILK	23
TM	48
SC	1.1
REA	.20
FAT	.017
IMF	.05
BW	93
WW	665
YW	1106

55 OHR PRIME N71 31U ET

OHRR 31U 2/8/2008 100% 1A 42930681

MOHICAN Prime Up 72P MOHICAN Mint 19M

Sire: MOHICAN Plus 107M

RJH H45 Betty N71 RJH Momentum H45

Dam: STAR Brooks 39K

Good, complete ET bull from Betty who's dam and granddam are both Dams of Distinction. We bought into Prime Up after seeing his \$54,000 mother. This bull is a breed improver for 12 of 15 traits and in the top 25% for WW, scrotal, ribeye, and BMI, BII & CHB indexes.

BW	3.1
WW	50
YW	78
MILK	16
TM	41
SC	0.8
REA	.35
FAT	.016
IMF	.06
BW	71
WW	631
YW	1105

56 OHR PRIME 40N 18U

OHRR 18U 2/1/2008 100% 1A 42930664

MOHICAN Prime Up 72P MOHICAN Mint 19M

Sire: MOHICAN Plus 107M

OHR Nikita 55H 40N VCR East Kodiak 506E

Dam: OHR Questiva 55H

Thick, long, dark, high performance son of calving ease and carcass sire Prime Up. Dam has a 110 WWR and is a great uddered daughter of Kodiak, trait leader for REA, IMF and Scrotal. He's in the top 25% of the breed for birth weight, marbling and calving ease direct along with BMI, CEZ & BII indexes. Twin to a 62# heifer. Should work well on heifers!

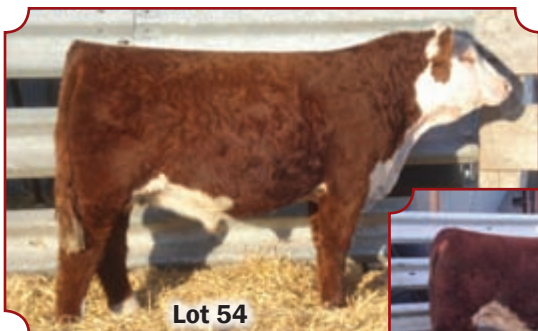
BW	2.2
WW	37
YW	59
MILK	12
TM	31
SC	.07
REA	.26
FAT	.044
IMF	.12
BW	59
WW	642
YW	1109





Lot 53

**Lot 53's Sister -
High seller in 2007 Red Power Sale ->**



Lot 54

**Maternal Brother to Lot 54 &
Paternal Brother to Lot 68 ->**



Lot 55

Lot 55's Dam ->



Lot 56

Lot 56's Sire ->



57**OHR MAX 3105 75U****OHRR 75U 3/6/2008 100% 1A 42947843****OHR Kodiak D467 75M**

VCR East Kodiak 506E

Sire:

HUSO 114 Gem D467

WALKER GF Ms H101 Z261 3105

WILL-VIA CCC Max

Dam:

LCC Lady Butler 614R Z261

Good March bull from our senior herdsire Kodiak 75M--a multi trait leader. Dam is a moderate, nice uddered Max daughter who also has a 2 year old in this sale. Can be used on heifers!

BW	2.7
WW	40
YW	65
MILK	18
TM	38
SC	0.6
REA	.21
FAT	.019
IMF	.03
BW	83
WW	676
YW	1158

58**OHR WALKER 931H 89U****OHRR 89U 3/19/2008 100% 1A 42947841****OHR Kodiak D467 75M**

VCR East Kodiak 506E

Sire:

HUSO 114 Gem D467

SADDLE -Valley 7C Jen 931H

KLNDIKE 500Z Fedrtion 7C

Dam:

TA-BAR Jen 016B

Big, long, high performance son of our great 75M bull, son of Kodiak-trait leader for ribeye, marbling & scrotal and SOD & CHB leader. Dam is a very nice Federation daughter with a 105 WWR and 94 BWR. Top 10% of breed for WW, YW, and CHB index.

BW	5.8
WW	57
YW	91
MILK	12
TM	41
SC	.08
REA	.20
FAT	.02
IMF	.01
BW	97
WW	753
YW	1298

59**OHR MASTERFUL 19N 60U****OHRR 60U 2/23/2008 100% 1A 42931327****HA Masterpiece M242**

REMITALL Governor 236G

Sire:

HA Remtone 706G

OHR Nikita 406E 19N

VCR East Kodiak 506E

Dam:

JAK 218Y Rarity 406E

Big, long sided son of Masterpiece from one of our favorite Kodiak daughters. Both of the grandsires are Sires of Distinction and CHB leaders. Dam has a production WWR of 109. In the top 15% of breed for WW,YW, Scrotal, Fat, REA and BMI, BII and CHB indexes.

BW	7.5
WW	56
YW	89
MILK	16
TM	44
SC	1.0
REA	.42
FAT	-.018
IMF	.07
BW	106
WW	681
YW	1147

60**OHR MASTERPLAN 6J 84U****OHRR 84U 3/15/2008 100% 1A 42931325****HA Masterpiece M242**

REMITALL Governor 236G

Sire:

HA Remtone 706G

MOHICAN Nancy 6J

REMITALL Boomer 46B

Dam:

MOHICAN Nancy 7A

Good March bull that is double bred to Boomer, Sire of Distinction an CHB leader. Dam has been a solid producer with a 102.5 WWR. He is a breed improver for 12 of 15 categories and in the top 20% for WW, YW, M&G, Fat, REA and CHB indexes.

BW	6.1
WW	50
YW	88
MILK	20
TM	45
SC	0.8
REA	.60
FAT	-.031
IMF	.08
BW	92
WW	628
YW	1158





Lot 57

Lot 57's Dam ->



Lot 58's Dam



Lot 59's Dam

Olson's Red Power Advantage:

- + More performance, muscle & maternal excellence.
- + Carcass, performance, scrotal & pelvic data available.
- + Bulls tested for BVD & from Johnes Free herd.
- + Bulls developed on roughage ration to ensure soundness.
- + Free wintering on bulls over \$2500, 300 mile delivery.
- + \$50 discount if you take your bull home sale day.
- + Reputation breeder of quality registered cattle since 1936!



~ 2-Year-Old Polled Hereford Bulls ~

61

REMITALL TIMBERLINE 52T

NGA 52T 1/29/2007 100% 1A 02896241

REMITALL First Class ET 113R REMITALL Olypian ET 262L

Sire: REMITAL Belle 92L

BNC 4L Diamond Lil 110N FCC 60G Maddux 4L

Dam: BLACK-Diamond Gleamer 209J

Big, powerful 2 year old with extra performance, length, muscle and pigmentation. Dam is an excellent Maddox daughter with a 108 WWR. Her 2008 heifer calf sold for \$10,000. Timberline stems from a long line of maternal & performance genetics. Terms to be announced on sale day.

BW	5.7
WW	48
YW	80
MILK	16
TM	40
SC	0.6
MARB	.05
REA	.20
FAT	.002
BW	96
WW	738
YW	NA



Lot 61

Lot 61's Dam ->



62

OHR HARDLINE 3105 89T

OHRR 89T 2/24/2007 100% 1A 42850831

OHR Hard Right 10M 31R RJH Momentum H45

Sire: OHR Mattie 91F 10M

WALKER GF Ms H101 Z261 3105 WILL-Via CCC Max

Dam: LCC Lady Butler 614R Z261

Good, complete coming 2 year old with a low birth weight and balanced EPD's. He should work well on heifers and add maternal strengths. He's a breed improver for 12 of 15 traits and in the top 20% for birth weight, milk, scrotal, ribeye area, BMI, BII and CEZ indexes.

BW	0.6
WW	42
YW	67
MILK	21
TM	42
SC	0.9
REA	.38
FAT	.007
IMF	-.01
BW	76
WW	626
YW	1034

63

OHR MASTERPIECE 82N 85T

OHRR 85T 2/23/2007 100% 1A 42851497

HA Masterpiece M242 REMITALL Governor 236G

Sire: HA Remtone 706G

OHR Little Sister 82N GENETIC Blitz 434V 0901

Dam: OHR Susie 30G

Complete, smooth structured bull from a solid producer. Granddam, 30G, and her mother were both Dams of Distinction here at OHR. Highly maternal pedigree that will work well on heifers too. A breed improver for 13 of 15 categories. Top 20% of breed for REA and calving ease maternal.

BW	2.7
WW	41
YW	67
MILK	19
TM	40
SC	0.6
REA	.38
FAT	-.005
IMF	.05
BW	86
WW	607
YW	962



~ Reference Sires ~



OHR Kodiak D467 75M

Kodiak son from our high volume, heavy milking donor with a 111 WWR.

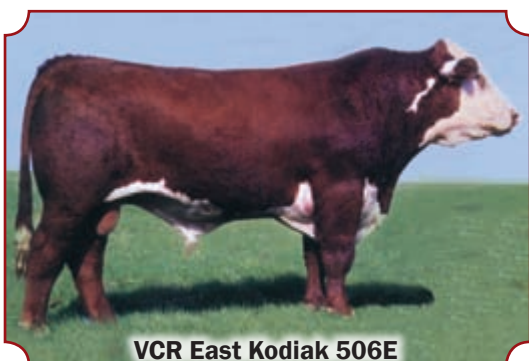
BW	4.9
WW	51
YW	85
MILK	14
TM	39
SC	0.9
REA	.37
FAT	.024
IMF	.05



HA Masterpiece M242

Governor by Boomer donor for Grandview (104 WWR). Daughters have 108.5 WWR.

BW	5.4
WW	51
YW	89
MILK	24
TM	50
SC	1.0
REA	.49
FAT	-.024
IMF	.12



VCR East Kodiak 506E

Legendary trait leader for REA, Marbling & Scrotal. Also a Sire of Distinction & CHB leader.

BW	5.8
WW	53
YW	84
MILK	7
TM	34
SC	1.4
REA	.42
FAT	.044
IMF	.11

Contact:



OLSON **Hereford Ranch**

2713 166 Ave SE - Argusville, ND 58005

Carl Olson- (701) 361-0684 -olsoncandc@aol.com

www.olsonherefordranch.com

"We Breed Excitement!"

2009 Spring American Hereford Association EPD averages

2007 & 2008 born calves

BW	WW	YW	Milk	TM	Sc	Marb	REA	Fat
3.5	42	69	16	37	.6	.04	.16	.003



~ Polled Hereford Heifers ~

64

OHR REVLON 99R 93U

OHRR 93U 3/20/2008 100% 1A 42931352
 HA Masterpiece M242 REMITALL Governor 236G
 Sire: HA Remtone 706G

OHR Gloria 55H 99R RJH Momentum H45
 Dam: OHR Questiva 55H

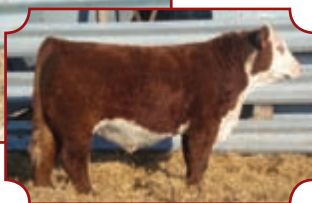
Very good Masterpiece heifer from a very productive 3 year old that raised our heaviest bull last year. On her first 2 calves she earned a 93 BWR and 116 WWR. Breed improver for 13 of 15 categories. Top 15% or better for WW, YW, milk, M & G, Scrotal, Fat, REA and CHB. Show potential too!

BW	3.2
WW	54
YW	91
MILK	22
TM	49
SC	0.9
REA	.47
FAT	-.018
IMF	.05
BW	77
WW	638
YW	984



Lot 64

Lot 64's Brother - Sold last year ->



65

OHR REVLON 116R 88U

OHRR 88U 3/18/2008 100% 1A 42931354
 HA Masterpiece M242 REMITALL Governor 236G
 Sire: HA Remtone 706G

MOHICAN Vindi 116G MOHICAN Dayta 1ET
 Dam: MOHICAN Vindi M78C

Fancy March heifer from a Dam of Distinction Dayta daughter with a 102 WWR. This young, sharp heifer is backed by high maternal & performance genetics. Breed improver for 12 of 15 categories. Top 20% for REA, Fat and CHB.

BW	6.1
WW	48
YW	78
MILK	18
TM	42
SC	0.9
REA	.41
FAT	-.014
IMF	.02
BW	92
WW	605
YW	837



Lot 65

Lot 65's Dam ->



66**OHR REVLON 107R 83U****OHRR 83U 3/15/2008 100% 1A 42931353****HA Masterpiece M242** REMITALL Governor 236G

Sire: HA Remtone 706G

OHR Gloria 8255 107R RJH Momentum H45

Dam: OXH Lola 8255

This attractive heifer combines the best of low birth, birth calving ease (bottom) with performance & carcass (on top). High maternal from both ends! Dam has a 97.5 BWR and 104 WWR on first 2 calves. Improver for 14 of 15 categories. Top 10% for milk, M & G, Scrotal, REA, and CHB!

BW	3.4
WW	51
YW	76
MILK	25
TM	50
SC	1.0
REA	.48
FAT	-.011
IMF	.06
BW	84
WW	628
YW	787

67**OHR REVLON 50P 95U****OHRR 95U 4/1/2008 100% 1A 42931330****HA Masterpiece M242** REMITALL Governor 236G

Sire: HA Remtone 706G

OHR Nikita 69F 50P VCR East Kodiak 506E

Dam: OHR Questiva 69F

Young, April heifer with a good pattern and super pedigree. She combines 3 of the breed best carcass and performance sires 236G, 46B and 506E - all are Sires of Distinction and CHB leaders. Dam's WWR=101.5. Improver for 13 of 15 categories!

BW	3.4
WW	45
YW	78
MILK	18
TM	40
SC	1.0
REA	.33
FAT	.001
IMF	.07
BW	78
WW	638
YW	NA

68**OHR SILVER LADY P316 152T****OHRR 152T 10/11/2007 100% 1A 42934104****PW MOHICAN Nasdaq P316** REMITALL Boomer 46B

Sire: PW Victoria 964 8114

RF 262D Vickie 18N CMF 103T Victor 262D

Dam: DL Victra 85X 40A

Complete, moderate fall heifer by Nasdaq and a good 262D daughter. Thickness, depth and pigment in a very correct structure. Both grandsires are Sires of Distinction. She ranks in the top 15% of breed for REA.

BW	4.6
WW	43
YW	69
MILK	16
TM	37
SC	0.5
REA	.41
FAT	.006
IMF	-.02
BW	84
WW	505
YW	759

**Lot 68**

69**OHR LOLA 8255 135T****OHRR 135T 5/15/2008 100% 1A 42850833****OHR Right Turn 64L 78R** RJH Momentum H45

Sire: HAROLDSON'S 45H Christina 64L

OXH Lola 8255 OXH Advance 3007

Dam: OXH Judi 6258

BW	-1.3
WW	43
YW	58
MILK	26
TM	47
SC	1.1
REA	.11
FAT	.023
IMF	-.02
BW	69
WW	580
YW	730

A direct daughter of Lola 8255 from a son of Momentum—calving ease and low birth weight sire with good growth and REA. A nice heifer with super EPD's and productive mother (WWR of 106.5). Top 15% for BW, Milk, M & G, CEM, CED, Scrotal and BMI, BII & CEZ indexes. Ready to breed this spring.

**Lot 69's Dam****70****OHR VICTORIA 68G 137T****OHRR 137T 5/29/2007 100% 1A 42850804****OHR Right Turn 64L 78R** RJH Momentum H45

Sire: HAROLDSON'S 45H Christina 64L

STAR T Bonita A6 68G WTK 55Y Bond 75A

Dam: WILLVIA Miss Victoria A6

BW	3.5
WW	43
YW	66
MILK	15
TM	37
SC	0.8
REA	.22
FAT	-.01
IMF	-.17
BW	86
WW	562
YW	738

A nice daughter our calving ease sire 78R. Her mother, 68G, is a high volume daughter of National Champion Bond and a great Dam of Distinction donor Victoria A6. Sells ready to breed this spring. Dam was Calf Champion at KC Royal show in 1997.

**Lot 71's Dam**

Lot 71's Brother ->
Last year's top selling 2 year old bull



~ Polled Hereford Bred Heifers ~

71

OHR REVLON 71P 105T

OHRR 105T 3/9/2007 100% 1A 42851496

HA Masterpiece M242 REMITALL Governor 236G

Sire: HA Remtone 706G

OHR Nikita 69F 50P VCR East Kodiak 506E

Dam: SADDLE-VALLEY 7C Jen 931H

Moderate, fancy heifer with good length and stacked with performance and REA genetics. First Masterpiece daughters are making great cows (108.5 WWR). Top 20% for WW, YW, Scrotal, REA and BMI, BII & CHB indexes. Exposed to RF Knight 3238 5T - 5/1/08 to 5/30/08 exposed to OHRR To Dawg 107T (Red Angus) 6/12/08 to 7/31/08.

BW	4.8
WW	50
YW	82
MILK	16
TM	41
SC	0.9
REA	.43
FAT	.000
IMF	0.7
BW	79
WW	545
YW	742

72

OHR RUBY Q 305T ET

OHRR 305T 2/25/2007 100% 1A 42850878

MOHICAN Quest 26C 4S Beau Quest

Sire: MOHICAN Sunny M11Z

OXH Ruby 6071 HH Advance 438D

Dam: OXH Toni 1320

Good daughter of World Beef Expo and many times Champion, Quest. This ET heifer is a full sister to 307T in this sale. Dam, 6071, is an ideal cow with a 104 WWR! Exposed to RF Knight 3238 5T 5/1/08 to 5/30/08. Exposed to OHRR Top Dawg 107T (Red Angus) 6/12/08 to 7/31/08.

BW	4.7
WW	32
YW	64
MILK	19
TM	35
SC	0.5
REA	-.03
FAT	.032
IMF	-.01
BW	84
WW	518
YW	851

73

OHR RUBY Q 307T ET

OHRR 305T 2/25/2007 100% 1A 42850878

MOHICAN Quest 26C 4S Beau Quest

Sire: MOHICAN Sunny M11Z

OXH Ruby 6071 HH Advance 438D

Dam: OXH Toni 1320

Very complete, dark, attractive daughter of Quest and our great donor 6071. A deep, long great uddered daughter of a Dam of Distinction. Quest daughters have made great cows! Exposed to RF Knight 3238 5T - 5/1/08 to 5/30/08. Exposed to OHRR Top Dawg 107T (Red Angus) 6/12/08 to 7/31/08.

BW	4.7
WW	32
YW	64
MILK	19
TM	35
SC	0.5
REA	-.03
FAT	.032
IMF	-.01
BW	84
WW	518
YW	851



Lot 73 & 74's Dam

Lot 73 & 74's Sire ->

