

Olson's

Red Power

Performance Bull Sale

At the Ranch ~ Argusville, ND



Feb 14, 2008

~ Thursday ~ 1:00 Sale ~

81 Lots sell:

48 Red Angus Bulls

10 Red Angus Heifers

8 Polled Hereford Bulls

10 Polled Hereford Heifers

5 Commercial Heifers

"We breed excitement!"

~ General Information ~

Sale Time: 1:00 CST, Thursday, February 14th, 2008. Complimentary noon lunch.

There will be refreshments and food later in the afternoon on Wednesday, Feb 13th.

Location: At the ranch. From Argusville on I29: 7 West on Cass #4, 1 North & ½ West.

From Casselton @ I94: 10 North on State Hwy 18, 5 East on Cass #4, 1 North & ½ East.

From Arthur: 3.5 South on State Hwy 18, 5 East on Cass #4, 1 North & ½ East.

Motels: Holiday Inn, on Interstate 29 in Fargo <20 minutes to ranch> 701-282-2700.

Governors Inn, on Interstate 94 at Casselton <20 minutes to ranch> 888-847-4524.

Fargo has many nationwide hotels 20 minutes from OHR.

Airline Service: Northwest and United both serve Fargo's Hector International Airport.

Delivery: Free delivery to central points up to 300 miles and further distances at cost.

Take your bull home sale day and get \$50 off.

Free Wintering: We keep your bull until April 1st on purchases of \$2500 or more. We recommend insurance for those animal not leaving on sale day.

Guarantee: All cattle are fully guaranteed according to the standards set by the American Red Angus and American Hereford Associations.

Terms: Terms of the sale are cash or check. Settlement must be made immediately following the sale before animals can be loaded or delivered. Every animal sells to the highest bidder. Any correction from the auction block takes priority over printed material in the catalog. We will be retaining a semen interest in some of the bulls selling.

Liability: All attending the sale do so at their own risk. OHR assumes no responsibility for accident or injury.

EPD's: All EPD's are current as of January 15, 2008. As yearling weights, carcass ultrasound and scrotal measurements are taken the EPD's may change some by sale day. Registration numbers are provided so you can research animals further at breed websites: www.redangus.org or www.hereford.org.

Cattle on Display: All sale cattle are at the ranch and we invited you to stop prior to the sale to look them over and visit with us. Many of the mothers and sires will be nearby also. Sale cattle will be available for viewing in their display pens the afternoon of Wed. February 13th and again Thursday morning until the sale starts.

Herd Health: All bulls will be tested for BVD. Our herd is Johns Free. All sale cattle were vaccinated and boosted this fall with Bovi Shield 5 and Ultra One Shot 7 and treated again with Ivomectin pour on in December. Vet work by Dr. Mark Wieland, Casselton Vet Service - 800-216-9985.

Supplement Sheet: More information will be available upon request one week prior to the sale and available sale day, including: Ribeye, back fat, marbling, pelvic area and scrotal measurements. Current EPD's and weights are provided in the catalog. We hope to provide you with the most accurate information possible so when you see the cattle you can make the best selection for your program.

Mail and phone bids: Bidders unable to make the sale may contact the Olsons or a staff member to assist in the bidding process. Cell phone numbers listed below.

The Olsons - cell phones:

Edward.....701-238-3601

Carl.....701-361-0684

Jeanne.....701-866-5779

Craig.....701-367-6704

Sale day phone ~ 701-484-5779

Sale Staff - cell phones:

Kyle Gilchrist, Auctioneer.....641-919-1077

Art Handel, Handel Marketing.....605-391-8233

Jay Elfeldt, AHA fieldman.....308-386-2640

Terry Robinson, Farm & Ranch Guide.....701-471-5153

Bryan Gill, Big Red Genetics.....701-730-0134

Malynda Carter, Hereford America.....701-351-4758

Table of Contents:

Red Angus Bulls	lots 1-48	p.2-19
Red Angus Heifers	lots 49 -58	p.23-26
Polled Hereford Bulls	lots 59-66	p.28-31
Polled Hereford heifers	lots 67-76	p.32-35
Commercial Heifers	lots 77-81	p.36

The Region's Red Angus & Polled Hereford Performance Leader!

Olson's Red Power

Performance Tested Bull Sale

At the Ranch - Argusville, ND - Noon Lunch - 1:00 PM Sale

Feb. 14, 2008

New Sale Location

50 Red Angus Bulls • 10 Red Angus Heifers
8 Polled Hereford Bulls • 10 Polled Hereford Heifers
5 Red Angus commercial heifers

Dear Cattlemen,

Welcome to the Red Power Performance Tested Bull Sale on Thursday, February 14th. The bulls are an impressive group again this year with the performance, muscle and genetic makeup of one of our best groups ever. They have been performing well on test and we are excited to see the data as it comes in.

The 2008 sale will be held in our heated sale facility at the ranch, 7 West, 1 North and ½ West of Argusville. Here you will have the opportunity to see the bulls in their "natural" environment. Many of the mothers will be calving or close to it and can be viewed at this time. Our herdsires will be nearby also. The bulls should stay healthier without the extra stress of going to a sale barn and the additional hauling, adjustment period. We have had a lot of positive comments about this change and hope it will help us to better serve you and the cattle we will be offering.

A special thanks to those of you who made our Dams of Distinction female production sale one of the top Red Angus sales in the nation for 2007! Many of these top females have bulls in this year's sale. This year's Red Angus offering is loaded with many top performing yearlings & a select group of 2006 born bulls. These bulls are sired by some excellent herd sires - 3 of our sires are being used by breeders across the nation. We firmly believe that this group includes bulls that will positively impact the breed for year's to come.

All cattle are at OHR and can be viewed here prior to the sale. We welcome you to come and take a look ahead of the sale. We are just 20 minutes NW of Fargo with some of the region's best dining and shopping opportunities. We are continuing to collect data on the sale cattle and will have that available to you prior to the sale also. All bulls in the sale will be tested for BVD and our herd is Johnes Free. Again we will be offering a \$50 discount if you take your bulls on sale day or we will keep your bulls until April 1st.

Our family has been in the registered cattle business since 1936 and our commitment to the cattle industry has never been stronger. We are here to serve you! Contact us if you have questions or need more info prior to the sale. We invite you to be with us on Feb. 14th.

Sincerely,
The Olsons



The Olsons (top clockwise): Edward, Caryn, Carl, Casey, Craig & Jeanne

RED OHR ANGUS

Polled Herefords

The Olsons

Edward, Jeanne, Carl, Craig and Caryn
16068 24 St. S.E. ■ Argusville, ND 58005
Email: olsoncandc@aol.com

"We Breed Excitement"

Phone/Fax: (701) 484-5779
Ed's cellular: (701) 238-3601
Carl's cellular: (701) 361-0684

www.ohrredangus.com

~ 2007 Born Bulls ~

1

OHRR 55R-64R MAJ. ADVANCE 2T

OHRR/2T 1/21/2007 100% 1A 1196973

OHRR 65H Major Mahogany 64R LLC Major League A502M
 Sire: OHRR 508 Mahogany 65H

OHRR LMF Rambos Tiffany 55R 4L Advantage R9N
 Dam: OHRR 1K-210 Tiffany 66N

Check the numbers here - a big, strong bull out of a 2-year-old dam & she's a great one with a beautiful udder & lots of milk! Weaning Ratio of 116 gave this dam a 106 MPPA on her first calf. Take a good look here!

EPDs

BW	4
WW	48
YW	78
Milk	20
TM	44
Stay	13
Marb	.09
REA	.16
Fat	-.01
BW	84
WW	785
YW	1310



2

OHRR DAKOTA LANDMARK 5T

OHRR/5T 1/23/2007 100% 1A 1196965

SRR Red Canyon Lchmn Grand Canyon 1244G
 Sire: Blue Ridge Kima 950

OHRR 1098 Classy 48L Lchmn Rampage 1098E
 Dam: OHRR 925 Cub Lass 46G

Super muscle shape, extra length, lots of volume, big testicles, and very sound structure! We feel "Landmark" has all the tools to make a huge impact on the Red Angus breed. He is backed by a super cow family. His dam has a 105 MPPA. Grand mother (11) & great grandmother (16) are still working in our herd with super udders! Terms to be announced sale day.

EPDs

BW	1.3
WW	36
YW	64
Milk	23
TM	41
Stay	13
Marb	.18
REA	-.07
Fat	-.01
BW	72
WW	697
YW	1380



3**OHRR 24P DIVO RAMBLER 6T**

OHRR/6T 1/24/2007 100% 1A 1196941

EPDs

BW	2.7
WW	42
YW	69
Milk	20
TM	41
Stay	10
Marb	-.02
REA	.08
Fat	0
BW	75
WW	701
YW	1336

OHRR 10H Dakota Rambler 75R OHRR Dakota Copper 29K
 Sire: OHRR Ms Scarlett 10H

OHRR 745 Tana Diva 24P OHRR 10H Divide 77M
 Dam: PFFR Ms Thunderheart 745

Another super bull with good length and performance from a good 3-year-old. 701# gives this bull a 112 ratio and dam a 105 MPPA. Pedigree is loaded with our finest females 10H, 9502, 15F and 745, as well as our best herdsires. Here's maternal opportunity!

**4****OHRR DAKOTA TRADEMARK 10T**

OHRR/10T 1/26/2007 100% 1A 1196971

EPDs

BW	2.4
WW	43
YW	75
Milk	18
TM	40
Stay	11
Marb	.01
REA	.16
Fat	-.01
BW	70
WW	734
YW	1357

4L Advantage R9N Perks Advancer 9088
 Sire: 4L Ms Make My Day R903

OHRR 214 Copper Lass 54P OHRR 06K Dak Copper 5M
 Dam: PFFR Ms Lass 214

Another amazing 3-year-old dam of this great young bull. 70# BW to 734 AWW (117 ratio) gives this dam a 107 MPPA. We can't ask for more. This bull has been a stand out since birth. Dark cherry red, extra muscle and volume with fantastic cow families. Herdbull here!



5

OHRR 40R MAJOR VANTAGE 11T

OHRR/11T 1/27/2007 100% 1A 1196959

OHRR 65H Major Mahogany 64R LCC Major League A502M
Sire: OHRR 508 Mahogany 65H

OHRR 11H Adv Firefly 40R 4L Advantage R9N
Dam: OHRR Mack Karina 11H

A double-bred McIntosh going back to the Mahogany and Karina cow families - out of another promising 2-year-old heifer. Grand sire Major League is one of the most popular sires in the breed.

EPDs

BW	3.1
WW	38
YW	61
Milk	16
TM	35
Stay	11
Marb	-.02
REA	.10
Fat	-.01
BW	80
WW	629
YW	1170

6

OHRR 38P MR ADVANTAGE 17T

OHRR/17T 1/30/2007 100% 1A 1196957

4L Advantage R9N Perks Advancer 9088
Sire: 4L Ms Make My Day R903

OHRR 38H Red Flame 38P SRR Red Canyon 213
Dam: Red Howe Ms Flame 38H

This bull was a twin raised with his sister on a very productive dam bringing in over 1000# of calf this fall. He's doing a good job of catching up to his yearling contemps. Good muscle and structure!

EPDs

BW	4.3
WW	43
YW	73
Milk	18
TM	40
Stay	13
Marb	.07
REA	.29
Fat	0
BW	61
WW	535
YW	1018

7

OHRR 3P DAK RAMBLER 22T

OHRR/22T 1/31/2007 100% 1A 1197007

OHRR 10H Dakota Rambler 75R OHRR Dakota Copper 29K
Sire: OHRR Ms Scarlett 10H

OHRR 62M Rams Lass 3P OHRR 67G Rampage 100M
Dam: OHRR 9502 Rams Eve 62M

Solid Rambler son with good muscle and structure. Lots of quality cows in this very deep pedigree. Note his low 65# birth weight - this bull should work very well on heifers and leave top females!

EPDs

BW	1.9
WW	33
YW	55
Milk	23
TM	40
Stay	11
Marb	-.05
REA	-.08
Fat	-.01
BW	65
WW	642
YW	1143

8

OHRR 50H RED CANYON 25T

OHRR/25T 2/01/2007 100% 1A 1196967

SRR Red Canyon 213 Lchmn Grandcanyon 1244G
Sire: Blue Ridge Kima 950

OHRR 41E Ms Ultra 50H RBRTs McIntosh II 344
Dam: OHRR Ms Ultress 41E

Out of our carcass sire Red Canyon (REA of .27 and IMF of .31) and a great older 344 daughter of our many times Supreme Champion, 41E. This guy was raised on 2 quarters and still made 607#.

EPDs

BW	1.8
WW	39
YW	66
Milk	16
TM	35
Stay	13
Marb	.14
REA	.08
Fat	0
BW	76
WW	607
YW	1071

9**OHRR 81N RED CANYON 28T**

OHRR/28T 2/02/2007 99.4% 1B 1196992

SRR Red Canyon 213 Lchmn Grandcanyon 1244G
 Sire: Blue Ridge Kima 950

OHRR 30J Ms Copper 81N OHRR Dakota Copper 29K
 Dam: OHRR 35B Macs Lela 30J

Carcass genetics here from Red Canyon and extra maternal from 29K and Mack 344. Dam is a very attractive, dark colored female from the 30J - 35B super cows. Note he's a catagory 1B at 99.4%.

EPDs

BW	0
WW	35
YW	60
Milk	18
TM	36
Stay	14
Marb	.12
REA	.10
Fat	.01
BW	71
WW	606
YW	1170

10**OHRR 50M RED CANYON 33T**

OHRR/33T 2/04/2007 100% Category II 1196968

SRR Red Canyon 213 Lchmn Grandcanyon 1244G
 Sire: Blue Ridge Kima 950

OHRR 105H Semone 50M OHRR 524 Durango 105H
 Dam: Sexton's Semone 9930

This bull looks like who's who in the breed - Canyon, Grand Canyon, Logan, Rampage, King Rob, Tiffany 524 & the Semones. A good balance of low birth and performance in a solid, well muscled bull. His grandmother has the lot 14 bull in the sale- both are really good!

EPDs

BW	1.0
WW	41
YW	75
Milk	17
TM	38
Stay	13
Marb	.07
REA	.09
Fat	.01
BW	73
WW	699
YW	1285

11**OHRR 2N DAKOTA ROBUST 34T**

OHRR/34T 2/05/2007 100% 1A 1197006

OHRR 9502 Mr Robust 18N Badlands Mr Beef 805
 Sire: Messmer Ophelia 9502

OHRR 61J Ms Copper 2N OHRR Dakota Copper 29K
 Dam: OHRR 1098 Moonbeam 61J

Sired by Mr Robust - our 2004 sale topper at \$5600. His REA was 17.1 and IMF 5.50. All our offspring by 18N are excellent individuals and he has produced some record carcass animals in other herds as well. 29K and Rampage on dam side add the maternal punch!

EPDs

BW	6.1
WW	52
YW	84
Milk	16
TM	42
Stay	12
Marb	-.03
REA	-.18
Fat	-.01
BW	94
WW	717
YW	1246

**Lot 11**

12**OHRR 11M RED CANYON 38T**

OHRR/38T 2/06/2007 100% 1A 1197028

SRR Red Canyon 213 Lchmn Grandcanyon 1244G
 Sire: Blue Ridge Kima 950

OHRR 61K Copper Roxxy 11M OHRR Dakota Copper 29K
 Dam: OHRR Foxy Roxy 61K

Carcass sire 213 and low BW dam side with only 64# at birth make this bull ideal for breeding heifers. Goes back to 18B, our highest MPPA cow at 110 and the great 61K cow. Stout made & well muscled.

EPDs

BW	-1.4
WW	34
YW	62
Milk	16
TM	33
Stay	14
Marb	.14
REA	-.04
Fat	.01
BW	64
WW	590
YW	1152

13**OHRR 63R-DAK. MAJOR 45T**

OHRR/45T 2/09/2007 100% 1A 1196981

OHRR 65H Major Mahogany 64R LCC Major League A502M
 Sire: OHRR 508 Mahogany 65H

OHRR 91L Copper Moonbeam 63R OHRR Dakota Copper 29K
 Dam: OHRR 70J Moonbeam 91L

Heifer bull here at -2.2 and 62 lbs. BW. 2-year-old dam goes back to calving ease sires 29K and 70J and some great producers 91L, 61J & 9502. Solid bull here!

EPDs

BW	-2.2
WW	26
YW	46
Milk	18
TM	32
Stay	12
Marb	-.04
REA	-.15
Fat	0
BW	62
WW	586
YW	1130

14**OHRR 9930 RED CANYON 47T**

OHRR/47T 2/10/2007 100% 1A 1197022

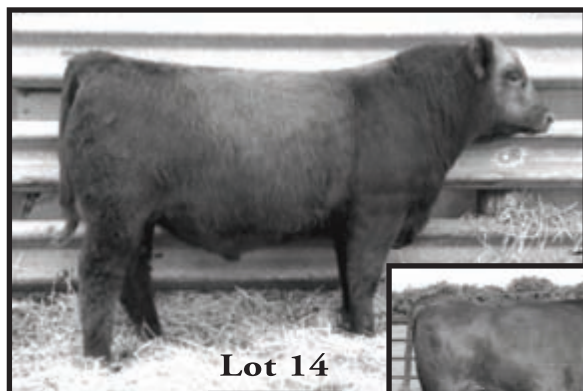
SRR Red Canyon 213 Lchmn Grandcanyon 1244G
 Sire: Blue Ridge Kima 950

Sexton's Semone 9930 Lman King Rob 8621
 Dam: JKG Semone II Y971

Another great bull from a great cow - she's 8 and looks half her age. This bull has a super structure with good muscle. Your replacement females will be awesome and bulls will weigh up. 213 is .27 on REA and .31 on IMF. He did well on test gaining 4.24#/day!

EPDs

BW	2.6
WW	43
YW	77
Milk	18
TM	39
Stay	14
Marb	.07
REA	.14
Fat	.01
BW	81
WW	656
YW	1334

**Lot 14****Lot 14's dam ->**

15**OHRR 023 RED CANYON 50T**

OHRR/50T 2/11/2007 100% 1A 1197012

SRR Red Canyon 213 Lchmn Grandcanyon 1244G
 Sire: Blue Ridge Kima 950

GMRA Juana 023 Lchmn Red Spread 1271F
 Dam: GMRA Juana 023

A great bull with good muscle and structure with powerful data to boot. Dam has had 6 straight calves: Averaging 71 # at birth and 663# WW and they've sold well too. Dam is moderate with perfect udder. You'll like this one!

EPDs

BW	3.3
WW	48
YW	85
Milk	22
TM	46
Stay	14
Marb	.10
REA	.24
Fat	0
BW	84
WW	669
YW	1213

**Lot 15's dam ->****16****OHRR 846 DAKOTA COPPER 51T**

OHRR/51T 2/11/2007 100% 1A 1196995

OHRR Dakota Copper 29K Lchman Copper Rob 1204D
 Sire: Messmer Ophelia 9502

Miss BHR Justice 846 RD Western Justice
 Dam: Miss RHP Deal 331

A twin out of one of our old BHR dams. She's had some very nice calves including a great heifer that topped our '06 sale at \$3800 to Ray Brickl in WI. This mating really worked well too!

EPDs

BW	-0.6
WW	26
YW	46
Milk	17
TM	30
Stay	11
Marb	-.04
REA	-.01
Fat	.01
BW	64
WW	572
YW	1079

17**OHRR 25L DAKOTA COPPER 55T**

OHRR/55T 2/12/2007 100% 1A 1196943

OHRR Dakota Copper 29K Lchman Copper Rob 1204D
 Sire: Messmer Ophelia 9502

OHRR Macs Sharee 25L RBRTs McIntosh II 344
 Dam: Badlands Sharee 503

Out of one of our 4 sisters (by 344 and 503) - they were all top cows. 25L's last 3 calves averaged 83# at birth and 703# at weaning. The pedigree is stacked with great females.

EPDs

BW	4.2
WW	40
YW	58
Milk	19
TM	39
Stay	13
Marb	-.12
REA	-.06
Fat	.01
BW	91
WW	626
YW	1309

18**OHRR 25R DAK RAMBLER 57T**

OHRR/57T 2/12/2007 100% 1A 1196944

OHRR 10H Dakota Rambler 75R OHRR Dakota Copper 29K
 Sire: OHRR Ms Scarlett 10H

OHRR 42L Copper Honey 25R OHRR Dakota Copper 29K
 Dam: OHRR Macs Honey 42L

Double bred Dakota Copper out of a 2-year-old. Note the birth to weaning spread for a first calf. Another bull that is backed by many generations of great females. Well balanced bull with good muscle!

EPDs

BW	-0.1
WW	32
YW	52
Milk	19
TM	35
Stay	12
Marb	-.03
REA	.08
Fat	-.01
BW	69
WW	664
YW	1183

19**OHRR 65H CANYON MAHOGANY 58T**

OHRR/58T 2/13/2007 100% 1A 1196982

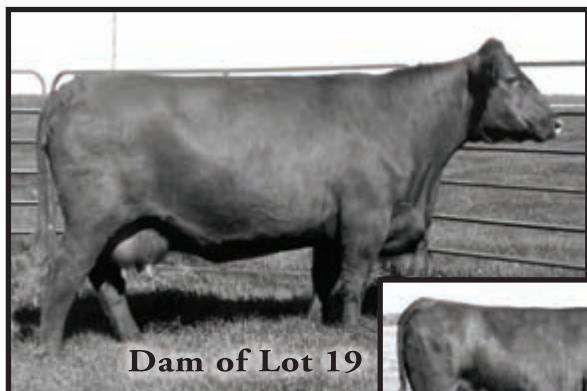
SRR Red Canyon 213 Lchmn Grandcanyon 1244G
 Sire: Blue Ridge Kima 950

OHRR 508 Mahogany 65H RBRTs McIntosh II 344
 Dam: JVD Mahogany 508

Red Canyon bull out of our great Mahogany donor cow - she just sold in our recent cow sale for \$7000 (½ interest) to Gregg Ranches, Carter SD. She has averaged 667# AWW on 6 calves. First class genetics!

EPDs

BW	5.1
WW	46
YW	74
Milk	18
TM	41
Stay	13
Marb	15
REA	.07
Fat	-.01
BW	90
WW	659
YW	1199

**Dam of Lot 19****Granddam of Lot 19 ->****20****OHRR 47N RED CANYON 59T**

OHRR/59T 2/13/2007 100% 1A 1196964

SRR Red Canyon 213 Lchmn Grandcanyon 1244G
 Sire: Blue Ridge Kima 950

OHRR 5E Copper Mack 47N OHRR Dakota Copper 29K
 Dam: OHRR Ms Classy 5E

Red Canyon cross works well on the Dakota Copper and McIntosh Bloodlines. This bull has all the genetic tools. His mother got sick on us and that set him back some but he's catching up fast and gained 3.7 lbs on test.

EPDs

BW	1.6
WW	33
YW	55
Milk	17
TM	33
Stay	13
Marb	16
REA	.08
Fat	.01
BW	80
WW	484
YW	1076

21**OHRR 55L RAMS ADVANTAGE 60T**

OHRR/60T 2/13/2007 100% 1A 1196972

EPDs

BW	6.4
WW	52
YW	83
Milk	17
TM	43
Stay	9
Marb	-.05
REA	-.02
Fat	0
BW	94
WW	752
YW	1357

4L Advantage R9N

Perks Advancer 9088

Sire:

4L Ms Make My Day R903

OHRR Rams Classy 55L

Lchmn Rampage 1098E

Dam:

OHRR Ms Classy 5E

Good, big bull with extra performance and good correct structure. His dam is one of our strongest, most productive females - 106 MPPA. Note his WW of 752(120 ratio). His parental BW EPD would be 4.1 but a 94# BW raised it. Dam's average BW on 4 calves is only 83 lbs. He gained 3.78/day on test and is still going strong. Powerful Bull!

**Lot 21****22****OHRR 4K MR RED DAWG 62T**

OHRR/62T 2/14/2007 100% 1A 1197008

EPDs

BW	2.7
WW	41
YW	78
Milk	20
TM	40
Stay	14
Marb	.03
REA	.21
Fat	0
BW	83
WW	704
YW	1205

WR Mr. Red Dawg 5335

Buf Crk Valentino N031

Sire:

TMAS Ms Fortune 114

OHRR 50H Ultra Cub 4K

OHRR 096 Cub Cadet 30H

Dam:

OHRR 41E Ms Ultra 50H

Sired by Red Dawg our performance and REA sire(20.1" REA is the largest ever recorded) and out of a top OHR Dam. We have three replacement females out of her. Her lifetime average on 6 calves: 70# BW, 654 WW. Her son, 23R, sold in our 2006 sale for \$7000 (1/2 interest) to Gregg Ranches, SD. We recommend this bull highly!

23**OHRR 32N DAK. COPPER 67T**

OHRR/67T 2/15/2007 100% 1A 1196949

EPDs

BW	-0.1
WW	39
YW	64
Milk	18
TM	37
Stay	14
Marb	-.09
REA	-.02
Fat	-.01
BW	56
WW	641
YW	1227

OHRR Dakota Copper 29K

Lchman Copper Rob 1204D

Sire:

Messmer Ophelia 9502

ESL Monu Honey 503

BJR Monu 4X-303

Dam:

OHRR 3128 Macs Honey 15

A good job here by 503. Her first calf was the top selling heifer in our Red Power sale last year at \$3500 to Ray Brickl of WI. She had twins, we put the other one on a foster dam and she raised this one. Her MPPA is 103. This bull is very complete.

24**OHRR 32N DAK. COPPER 68T**

OHRR/68T 2/15/2007 100% 1A 1199838

OHRR Dakota Copper 29K

Sire:

Lchman Copper Rob 1204D

Messmer Ophelia 9502

ESL Monu Honey 503

Dam:

BJR Monu 4X-303

OHRR 3128 Macs Honey 15

Twin to lot 23 and raised by a foster dam , he's come along way from his 46# start at birth. His dam raised the other bull calf and has a 103 MPPA. Granddam, Macs Honey, was super cow and a donor for Lloyds Red Angus.

EPDs

BW	-0.1
WW	39
YW	64
Milk	18
TM	37
Stay	14
Marb	-.09
REA	-.02
Fat	-.01
BW	46
WW	579
YW	1033

25**OHRR 31K MACS CANYON 69T**

OHRR/69T 2/15/2007 100% 1A 1196948

SRR Red Canyon 213

Sire:

Lchmn Grandcanyon 1244G

Blue Ridge Kima 950

OHRR 503 Mac Sharee 31K

Dam:

RBRTs McIntosh II 344

Badlands Sharee 503

A good, big, stout Red Canyon son from a top McIntosh daughter. Her 5 calves have averaged 79# at birth and 691# at weaning. He gained 4.08 #/day on test. Should sire stout, performance calves and leave nice replacement females.

EPDs

BW	5
WW	38
YW	60
Milk	19
TM	38
Stay	14
Marb	.13
REA	.08
Fat	0
BW	94
WW	629
YW	1282

**Lot 25's Dam ->****26****OHRR 8N COPPER ADVANTAGE 75T**

OHRR/75T 2/19/2007 100% 1A 1197011

4L Advantage R9N

Sire:

Perks Advancer 9088

4L Ms Make My Day

OHRR 61K Copper Roxy 8N

Dam:

OHRR Dakota Copper 29K

OHRR Foxy Roxy 61K

Solid bull with good muscle and a very nice pedigree going back to 18B (dam of 61K) a donor and foundation cow who produced to 16 years with a 110 MPPA.

EPDs

BW	2.8
WW	30
YW	52
Milk	16
TM	31
Stay	11
Marb	-.01
REA	.26
Fat	.01
BW	81
WW	491
YW	1077

27**OHRR DAKOTA MAGIC 76T**

OHRR/76T 2/20/2007 100% 1A 1196933

EPDs

BW	4.2
WW	48
YW	85
Milk	19
TM	42
Stay	11
Marb	-.05
REA	.14
Fat	0
BW	80
WW	730
YW	1294

WR Mr. Red Dawg 5335

Buf Crk Valentino N031

Sire:

Tmas Ms Fortune 114

OHRR Ms 925 Scarlett 15F

RBRTs McIntosh II 344

Dam:

Ms NeSho Memorial A925

We could use a full page for all the footnotes and photos for this one. This is 15F's 10th calf <730# = 116 ratio> her lifetime record is 77.2# at birth and 696# WW. This awesome cow has done it all. A daughter of 15F - The great 10H cow who is the dam of Rambler 75R - sold for \$17,500 in our cow sale last fall. This guy also has the muscle, structure and total performance to make a great herdsire!
Terms to be announced on sale day.

**Lot 27's Dam ->****28****OHRR 20R ROBUST RAMBLER 79T**

OHRR/79T 2/22/2007 100% 1A 1196937

EPDs

BW	4.2
WW	47
YW	75
Milk	17
TM	41
Stay	11
Marb	-.01
REA	.15
Fat	-.02
BW	83
WW	745
YW	1417

OHRR 10H Dakota Rambler 75R

OHRR Dakota Copper 29K

Sire:

OHRR Ms Scarlett 10H

OHRR 6H Ms Robusta 20R

OHRR 9502 Mr Robust 18N

Dam:

OHRR 3128 Mac Honey 6H

One of our stoutest, highest performing bulls in the sale out of a very good 2-year-old he ratioed 110% and sent her MPPA to 104. Pedigree is stacked with superior females and stout herdsires -we are not surprised he's this good! Highly recommended if you need a punch!



29

OHRR 39R DAK. RAMBLER 84T

OHRR/84T 2/23/2007 100% 1A 1196958

OHRR 10H Dakota Rambler 75R OHRR Dakota Copper 29K
Sire: OHRR Ms Scarlett 10H

OHRR 5E Dakota Classy 39R OHRR Dakota Copper 29K
Dam: OHRR Ms Classy 5E

Another super-mom 2-year-old. This bull will work for anyone and would be an excellent choice for heifers. Note the birth to yearling spread.

EPDs

BW	0.9
WW	33
YW	52
Milk	18
TM	35
Stay	11
Marb	-.04
REA	.04
Fat	.01
BW	71
WW	640
YW	1257

30

OHRR 25K MR. ADVANTAGE 88T

OHRR/88T 2/24/2007 100% 1A 1196942

4L Advantage R9N Perks Advancer 9088
Sire: 4L Ms Make My Day R903

OHRR Sister Beauty 25K HLH Buster 406 603
Dam: SAR Red Beauty 3091

R9N progeny have done so well for us topping sales and leaving nice females. 25k's mother was out of 2 black parents and a true beauty winning titles as a heifer and with a calf at side. Could be used on heifers or cows with confidence.

EPDs

BW	1.8
WW	36
YW	66
Milk	16
TM	34
Stay	10
Marb	-.08
REA	.08
Fat	-.01
BW	75
WW	640
YW	1300

31

OHRR 91F DAKOTA COPPER 90T

OHRR/90T 2/24/2007 100% 1A 1196998

OHRR Dakota Copper 29K Lchman Copper Rob 1204D
Sire: Messmer Ophelia 9502

OHRR Macs Sophia 91F RBRT's McIntosh II 344
Dam: LMB St Sophia 704

Out of an old faithful cow that brings in a top one every year. This should be an excellent bull to use on heifers. Dam has averaged 79# at birth and 618 at weaning on her calves.

EPDs

BW	-0.9
WW	23
YW	38
Milk	14
TM	26
Stay	11
Marb	-.09
REA	.03
Fat	.01
BW	66
WW	558
YW	1181

32

OHRR 78L MR RED DAWG 91T

OHRR/91T 2/24/2007 100% 1A 1196989

WR Mr. Red Dawg 5335 Buf Crk Valentino N031
Sire: Tmas Ms Fortune 114

OHRR KF 740 Gold Penny 78L Glacier Explorer 740
Dam: OHRR 388 Gold Penny 9J

We like this pedigree - Explorer females have been wonderful cows. 388 and 9J were 2 of our best. 78L has had 6 calves(BW: 74, WW: 660). Should be another great bull for heifers and making females.

EPDs

BW	-0.5
WW	28
YW	58
Milk	23
TM	37
Stay	13
Marb	-.03
REA	-.11
Fat	.01
BW	72
WW	580
YW	1026

33**OHRR 15L MAHOGANY 92T**

OHRR/92T 2/25/2007 100% 1A Applied For

EPDs**SRR Red Canyon 213**

Sire:

Lchmn Grandcanyon 1244G

Blue Ridge Kima 950

OHRR 65H Mahogany 15L

Dam:

Glacier Explorer 740

OHRR 508 Mahogany 65H

Another solid 213 bull -he works really well on the Explorer and 344 females. This bull has good structure and nice shape and should produce some top females also. Dam also has a powerful 2 -year-old in this sale as lot 43 -she's pictured there next to him.

BW	3.0
WW	39
YW	66
Milk	22
TM	41
Stay	13
Marb	.15
REA	-.12
Fat	0
BW	84
WW	644
YW	1199

34**OHRR 171P MR. ADVANTAGE 97T**

OHRR/97T 3/02/2007 100% 1A 1197019

EPDs**4L Advantage R9N**

Sire:

Perks Advancer 9088

4L Ms Make My Day R903

Messmer Bobbi 171P

Dam:

FCC Yankee 114

Messmer Bobbi 2046

Heifer bull! Double bred to calving ease sire Make My Day with a 1.2 BW EPD and 72 pound birth weight. Smooth, Correct structure too.

BW	1.2
WW	36
YW	66
Milk	18
TM	35
Stay	12
Marb	.10
REA	.08
Fat	0
BW	72
WW	589
YW	1206

35**OHRR 198H CANYON KING 98T**

OHRR/98T 3/04/2007 100% 1A 1197020

EPDs**SRR Red Canyon 213**

Sire:

Lchmn Grandcanyon 1244G

Blue Ridge Kima 950

Dahlke Michelle 198H

Dam:

Seeger Dreammaker 9628

DR Hly Michelle

Solid young bull with good structure, balanced data and well suited for use on heifers. Dam is a youthful looking cow with good udder that has done a great job for us on 8 calves: BW =80, WW=687.

BW	0.7
WW	35
YW	62
Milk	22
TM	39
Stay	13
Marb	.16
REA	-.04
Fat	0
BW	77
WW	613
YW	1149

**Lot 35**

36**OHRR 38H RED CANYON 106T**

OHRR/106T

3/12/2007

100% 1A

1196954

EPDs

BW	2.9
WW	42
YW	70
Milk	16
TM	37
Stay	14
Marb	.13
REA	.16
Fat	0
BW	76
WW	680
YW	1209

SRR Red Canyon 213

Sire:

Lchmn Grandcanyon 1244G

Blue Ridge Kima 950

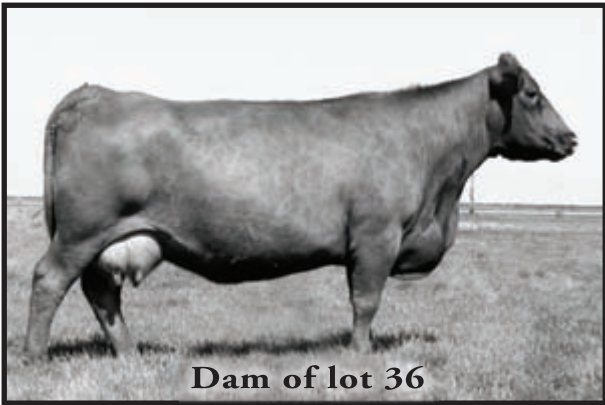
Red Howe Ms Flame 38H

Dam:

Red BVR Rab-Star 56C

Red Ms Flame DDH 83C

Complete, well muscled bull from our carcass and performance sire & from a productive, moderate, very efficient cow that never misses and consistently keeps the birth weights down.

**37****OHRR DAKOTA TOP DAWG 107T**

OHRR/107T

3/12/2007

100% 1A

1197021

EPDs

BW	3.8
WW	51
YW	90
Milk	19
TM	45
Stay	15
Marb	na
REA	na
Fat	na
BW	81
WW	778
YW	1400

WR Mr. Red Dawg 5335

Sire:

Buf Crk Valentino N031

Tmas Ms Fortune 114

SHHM Annabelle 209P

Dam:

SHHM Chief Joseph 56M

SHHM Annabelle 107J

Wow, here is the Top Dawg - another standout since birth. His dam also produced the highest WDA bull in the 2007 sale as well on her first calf. Super muscle expression, extra length & high performance. Dam is a 3 year old with 104 MPPA and sold for \$10,000 to Link Ranch, PA. Granddam is a donor with 106 MPPA and raised our top '07 heifer.

Selling ½ interest & full possession

**Lot 37's Granddam->**

OHRR/109T

3/15/2007

100% 1A

1196974

EPDs

BW	3.2
WW	46
YW	85
Milk	18
TM	41
Stay	14
Marb	-.02
REA	.23
Fat	0
BW	81
WW	699
YW	1099

WR Mr. Red Dawg 5335

Buf Crk Valentino N031

Sire:

Tmas Ms Fortune 114

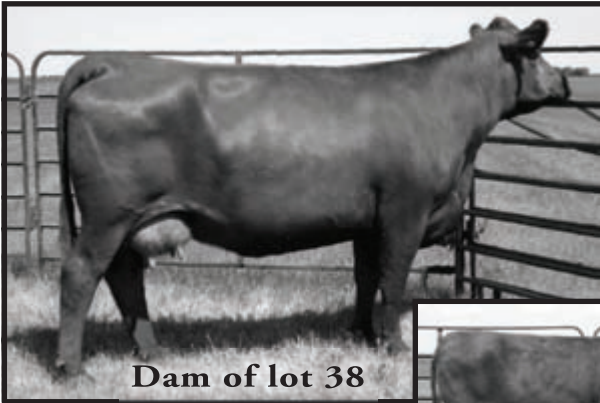
OHRR 63G Adv Mahogany 56N

RBJR Advance A709

Dam:

OHRR Ms Mahogany 63G

Another great son of Dawg and out of one of the most beautiful females on the ranch. Her 2006 bull sold for \$6000 in last year's sale. Her 3 calves = BW 78#, WW 693# and MPPA of 102. Great, muscular bull backed by 3 of the most fantastic females you could ever see!



Dam of lot 38

Lot 38's Granddam->

Olson's Red Power Advantage:

- + More performance, muscle & maternal excellence.
- + Carcass, performance, scrotal & pelvic data available.
- + Bulls tested for BVD & from Johnes Free herd.
- + Bulls developed on roughage ration to ensure soundness.
- + Free wintering on bulls over \$2500, 300 mile delivery.
- + \$50 discount if you take your bull home sale day.
- + Reputation breeder of quality registered cattle since 1936!



<- Lot 37's
maternal brother
sold last year.

**Landslide ->
son of lot 37's
Grandmother,
herdsire at OHR**



39**OHRR DAKOTA MACK 203T**

OHRR/203T

2/22/2007

100% 1A

1199590

EPDs

BW	1.8
WW	35
YW	54
Milk	13
TM	30
Stay	10
Marb	-.04
REA	.02
Fat	-.02
BW	99
WW	654
YW	1089

RBRT's McIntosh II 344

McIntosh Red 910

Sire:

RBRT's Class Lass 9447

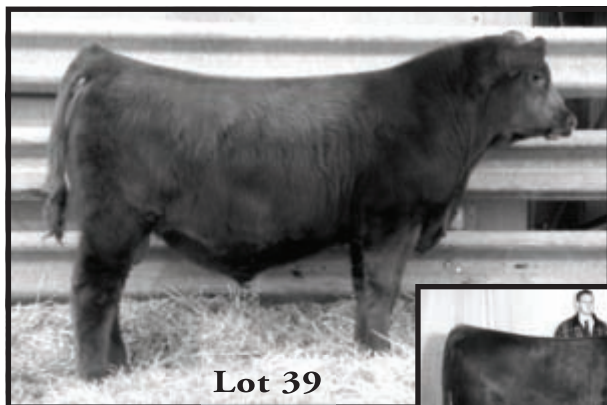
Messmer Ophelia 9502

LCC Heaven Or Bust 1000B

Dam:

Nodak Lady Licorice

Complete, well muscled ET bull from 2 legendary parents. 9502 is the mother of many great ones including OHRR Dakota Copper 29K and Mr Robust - who was our top REA and 2nd high marbling bull in the 2004 sale and sold for \$5600. 344 left many top bulls & females!

**Lot 39's full sister ->****40****OHRR COPPER RAMBLER 208T**

OHRR/208T

2/25/2007

100% 1A

1199591

EPDs

BW	2.6
WW	37
YW	64
Milk	21
TM	40
Stay	14
Marb	.01
REA	.07
Fat	.01
BW	93
WW	600
YW	1129

OHRR 10H Dakota Rambler 75R

OHRR Dakota Copper 29K

Sire:

OHRR Ms Scarlett 10H

BJR CCC Copperlass 0120

Lman King Rob 8621

Dam:

BJR Copperlass 9F

Muscle, length, depth, structure and a super pedigree. This ET bull is backed by a powerful donor from the great Copperlass family with breed giants: King Rob, Logan and Rambo. Sire side is deep also. This pedigree is stacked and he's herdbull material!

**Dam of lot 40 ->**

41**OHRR 65H GUNSMOKE 210T**

OHRR/210T

2/28/2007

100% 1A

1199592

EPDs

BW	1.8
WW	30
YW	52
Milk	17
TM	32
Stay	11
Marb	.06
REA	-.07
Fat	-.01
BW	94
WW	682
YW	1070

PCC Gunsmoke 3212

Pie Deep Canyon 908

Sire:

Pie Patti Anne 9221

OHRR 508 Mahogany 65H

RBRT's McIntosh II 344

Dam:

JVD Mahogany 508

ET bull from Gunsmoke and our great Mahogany donor. His maternal brother is lot 19 on page 8 - pictured there are 65H and 508. This is a very complete, dark bull from a super cow family.

42**OHRR DAKOTA MACK 202T**

OHRR/202T

2/22/2007

100% 1A

1199589

EPDs

BW	1.8
WW	35
YW	54
Milk	13
TM	30
Stay	10
Marb	-.04
REA	.02
Fat	-.02
BW	79
WW	530
YW	985

RBRT's McIntosh II 344

McIntosh Red 910

Sire:

RBRT's Class Lass 9447

Messmer Ophelia 9502

LCC Heaven Or Bust 1000B

Dam:

Nodak Lady Licorice

Full brother to lot 41. This bull is moderate framed with good shape and a very sound structure. Predictable, proven parents help give this bull a bright future.

~ 2006 Born Bulls ~**43****OHRR 15L 10S**

OHRR/10S

1/23/2006

100% 1A

1130663

EPDs

BW	3.9
WW	35
YW	59
Milk	21
TM	38
Stay	11
Marb	.01
REA	.01
Fat	0
BW	91
WW	707
YW	1256

4L Advantage R9N

Perks Advancer 9088

Sire:

4L Ms Make My Day R903

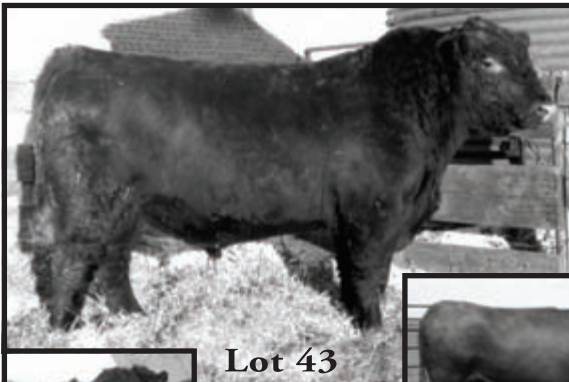
OHRR 65H Mahogany 15L

Glacier Explorer 740

Dam:

OHRR 508 Mahogany 65H

Big, thick powerful 2-year-old with good muscle and exceptional length. Should be able to go out and service lots of cows. Dam is an own daughter of 65H from the great Mahogany family. Check out 65H and 508 on page 8. We have great confidence in this bull.

**Lot 43****Dam of lot 43**

OHRR/204S

2/08/2006

100% 1A

1130336

EPDs

BW	1.5
WW	36
YW	56
Milk	24
TM	42
Stay	11
Marb	.05
REA	.27
Fat	0
BW	76
WW	679
YW	1096

LCC Major League A502M

Sire:

BFCK Cherokee Cnyn 4912

KRN Reba's Robin

EEA 142

Dam:

RCRA Wheel 'O Fortune

EEA 472-4603

ET bull that we retained to breed replacement heifers. His dam is a great old donor at Brenner RA with a 110 MPPA. He's a great bull and did a good job breeding. We are anxious for his '08 calves. Note his balanced EPD's & carcass numbers. Retaining a semen interest.



Lot 45 at 14 months

OHRR/203S

2/06/2006

100% 1A

1130335

EPDs

BW	3.3
WW	36
YW	60
Milk	21
TM	39
Stay	12
Marb	0
REA	.23
Fat	0
BW	74
WW	550
YW	na

4L Advantage R9N

Sire:

Perks Advancer 9088

4L Ms Make My Day R903

SHHM Annabelle 107J

Dam:

SHHM Robin Hood 117G

SHHM Red Rebelle 02E

ET bull from the great Annabelle donor (106 MPPA). She is very easy to look at with a great udder, feminine yet big bodied. Again this year her daughter has one of our top performing bulls in our sale. 107J is also the mother of our Jr Herdsire Landslide.



Lot 45

46

OHRR KRA 9J ADV GOLD 58S

OHRR/58S 2/12/2006 100% 1A 1130664

EPDs

BW	2.3
WW	34
YW	59
Milk	20
TM	37
Stay	9
Marb	NA
REA	NA
Fat	NA
BW	81
WW	651
YW	1109

4L Advantage R9N

Perks Advancer 9088

Sire:

4L Ms Make My Day R903

OHRR 388 Gold Penny 9J

Lchmn Rampage 1098E

Dam:

Panhandle Penny 388

Big, sound, thick 2-year-old bull from 9J cow that had a son sell for \$5500 in this sale 2 years ago to Jeff Earles in OK. Maternal grandmother, 388, earned a 109 MPPA and was one of our finest producers. Add some gold to your program.



Lot 48 -Jan 2007

Lot 48's dam ->



47

OHRR 79M COPPER DIVIDE 114S

OHRR/114S 5/10/2006 100% 1A 1130315

EPDs

BW	-1.7
WW	31
YW	54
Milk	15
TM	31
Stay	9
Marb	0
REA	-13
Fat	0
BW	76
WW	790
YW	NA

LCC Divide 1435K

Glacier Divide 310

Sire:

CJ's Hobo Mable

OHRR 62B Copper Iola 79M

OHRR Dakota Copper 29K

Dam:

Leland Iola 62B

Moderate, well structured bull. Dam averaged 75# BW and 716 WW on her first 2 calves for a 101 MPPA. Her first calf started the Santa Sale II and sold to Leslie Stokes in TX. Good bull for heifers!

48

OHRR 47 ADVANTAGE 119S

OHRR/119S 9/18/2006 100% 1A 1197871

EPDs

BW	3.4
WW	34
YW	61
Milk	18
TM	35
Stay	8
Marb	.01
REA	.25
Fat	0
BW	74
WW	na
YW	na

4L Advantage R9N

Perks Advancer 9088

Sire:

4L Ms Make My Day R903

OHRR 388 Gold Penny 9J

Lchmn Rampage 1098E

Dam:

Panhandle Penny 388

A very nice fall bull out of old Brandy who has a 103 MPPA. She's produced some great ones and high sellers in our Red Power sale like in the 2004 sale a \$4200 bull to Schroeder Bros, SD. She's had Santa Sale heifers at \$3500 and \$2250. Don't miss this fall bull.

~ Reference Sires ~

A OHRR DAKOTA COPPER 29K

OHRR/29K 1/28/2000 100% 1A 709597

Lchman Copper Rod 1204D Lman King Rob 8621
 Sire: Copper Lass 2392

Messmer Ophelia 9502 LCC Heaven or Bust 1000B
 Dam: Nodak Lady Licorice

Senior herdsire that keeps birth weights down and sires excellent structure, good muscling and good females. He was 2000 World Beef Expo Champion and NILE Bull Calf Champion in Billing. Owned with Broken Heart and ABS Global - semen available

EPDs

BW	-0.7
WW	38
YW	60
Milk	21
TM	40
Stay	15
Marb	-.05
REA	-.05
Fat	.01
BW	75
WW	802
YW	na

B WR MR RED DAWG 5335

5335/WR 3/25/2005 100% 1A 1046249

Buf Crk Valentino N031 Beckton Julian GG B571
 Sire: Buf Crk Primrose 5679

Tmas Ms Fortune 114 Lman King Rob 8621
 Dam: Straka Ms Fortune 4109

World Record REA at 20.49". High performance, extra long and his dam has a 107 MPPA. Note the power in his numbers and progeny! Owned with Thomas, Weidenbach, Gill, Lloyd, Double Diamond And Harbin. Semen available through Big Red Genetics.

EPDs

BW	2.4
WW	49
YW	99
Milk	21
TM	45
Stay	17
Marb	-.03
REA	.47
Fat	.01
BW	86
WW	798
YW	1607

C OHRR 10H DAKOTA RAMBLER 75R

OHRR/75R 2/22/2005 100% 1A 1025344

OHRR Dakota Copper 29K Lchman Copper Rob 1204D
 Sire: Messmer Ophelia 9502

OHRR Ms Scarlett 10H Lchmn Rampage 1098E
 Dam: OHRR Ms 925 Scarlett 15F

A top Dakota Copper son from one of our greatest cow families. 16.3 REA and big performance also. Topped our '06 sale \$15,000(1/2) Owned with Gill Red Angus and the Rambler Syndicate. Semen available through Big Red Genetics.

EPDs

BW	3.7
WW	41
YW	63
Milk	22
TM	42
Stay	12
Marb	-.05
REA	.14
Fat	0
BW	94
WW	778
YW	1477

D SRR RED CANYON 213

SNSN/213 1/31/2002 100% 1A 841830

Lchmn Grandcanyon 1244G Buf Crk Chf 824-1658
 Sire: KRN Reba's Robin

Blue Ridge Kima 950 Glacier Logan 210
 Dam: Blue Ridge Kima 806

Senior herdsire that adds performance and muscle. Note the high carcass EPDs too. He's been leaving nice daughters also. Owned with Strawberry Ridge Reds - Semen available from OHR.

EPDs

BW	3.6
WW	52
YW	89
Milk	22
TM	48
Stay	16
Marb	.32
REA	.27
Fat	0
BW	97
WW	746
YW	na



OHRR Dakota Copper 29K



Red Dawg 5335

Dam of Red Dawg->



Dakota Rambler 75R

10H, Dam of 75R->



SRR Red Canyon 213

HMV/R9N 3/26/2003 100% 1A 890625

EPDs

BW	4.4
WW	43
YW	75
Milk	20
TM	41
Stay	11
Marb	-.03
REA	.38
Fat	0
BW	86
WW	810
YW	1383

Lchman Copper Rod 1204D

Sire:

Lman King Rob 8621

Copper Lass 2392

Messmer Ophelia 9502

Dam:

LCC Heaven or Bust 1000B

Nodak Lady Licorice

2004 National Western Stock Show Reserve Bull Calf Champion. With his dam they were 2003 NILE Senior Champion Female. Consistently produces well muscled, good doing calves and nice females. Owned with Sand Hills Red Angus - semen available from OHR.



R9N's Dam ->



We Have What Everybody Wants,

**The Respect of the
Entire Cattle Industry...**



...and it's not because of the color of our hide.

2008 Spring Red Angus Breed Average EPDs-(non parent)

BW	WW	YW	Milk	TM	St	Marb	REA	Fat
0.2	32	56	17	33	12	.07	.06	0

~ Red Angus Heifers ~

51

OHRR 58R MAHOGANY GOLD 18T

OHRR/18T 1/31/2007 100% 1A 1196975

OHRR 65H Major Mahogany 64R LLC Major League A502M
Sire: OHRR 508 Mahogany 65H

OHRR 63K Summer Gold 58R Lchmn Rampage 1098E
Dam: OHRR 4039 Ms Summer 63K

Dam's first calf. 18T should make a great cow. Moderate in frame and flawless in her makeup. No secret her granddam and great granddam have 3 Supreme Championships between them. 18T would be a great junior show prospect!

EPDs

BW	-.4
WW	23
YW	40
Milk	18
TM	29
Stay	11
Marb	.01
REA	-.10
Fat	-.01
BW	56
WW	581
YW	954



Lot 51

52

OHRR 19H MACS ROSE 46T

OHRR/46T 2/09/2007 98.1% 1B 1196935

WR Mr. Red Dawg 5335 Buf Crk Valentino N031
Sire: Tmas Ms Fortune 114

OHRR Macs Lela 19H RBRTs McIntosh II 344
Dam: Leland Rimtop 416-120B

Category 1B - A super nice female who dam always brings in a good one. A maternal sib to 19H was Supreme Champion Over 11 Breeds at the Agri International . 120B was a good one too.

EPDs

BW	1.8
WW	40
YW	72
Milk	17
TM	37
Stay	12
Marb	-.01
REA	.35
Fat	.01
BW	76
WW	633
YW	906



Lot 52

51**OHRR 4P CANYON DIVA 12T**

OHRR/12T 1/30/2007 100% 1A 1197010

EPDs

BW	2.7
WW	38
YW	65
Milk	20
TM	39
Stay	13
Marb	.18
REA	.11
Fat	-.01
BW	79
WW	637
YW	891

SRR Red Canyon 213

Lchmn Grandcanyon 1244G

Sire:

Blue Ridge Kima 950

OHRR 4K Ultra Diva 4P

OHRR 10H Divide 77M

Dam:

OHRR 50H Ultra Cub 4K

We like the 213 daughters a lot - plenty of substance, volume and great udders. Dam and granddam (105 MPPA) both have great production track records. Note the nice EPDs.

52**OHRR 12M NONA FAYET 65T**

OHRR/65T 2/15/2007 100% 1A 1197029

EPDs

BW	-1.4
WW	26
YW	51
Milk	24
TM	38
Stay	13
Marb	.17
REA	-.02
Fat	0
BW	62
WW	562
YW	900

SRR Red Canyon 213

Lchmn Grandcanyon 1244G

Sire:

Blue Ridge Kima 950

OHRR 4K-Ultra Fayet 12M

Glacier Explorer 740

Dam:

OHRR 50H Ultra Cub 4K

Lots to like here. Balanced EPDs, maternal power and eye appeal. Dam has 2 replacements in herd and 102 MPPA. Granddam has several replacements and 105 MPPA. Should make a top cow!

**Lot 52**

**Lot 51 & 52's
granddam->**

**53****OHRR 51J MACS MARTA 116T**

OHRR/116T 3/25/2007 100% 1A 1196969

EPDs

BW	5.8
WW	39
YW	67
Milk	15
TM	34
Stay	11
Marb	-.10
REA	.21
Fat	.01
BW	96
WW	568
YW	923

WR Mr. Red Dawg 5335

Buf Crk Valentino N031

Sire:

Tmas Ms Fortune 114

OHRR Macs Sophia 51J

RBRTs McIntosh II 344

Dam:

LMB St Sophia 704

Young attractive female that will be a good one like her dam and granddam (MPPA 103). Adding this maternal to the performance and muscle of Red Dawg should be a nice genetic combination.

54**OHRR 4M SCARLET MARTA 95T**

OHRR/95T 3/01/2007 100% 1A 1197009

EPDs

BW	2.3
WW	38
YW	72
Milk	20
TM	38
Stay	12
Marb	-.10
REA	.01
Fat	0
BW	77
WW	638
YW	964

WR Mr. Red Dawg 5335

Buf Crk Valentino N031

Sire:

Tmas Ms Fortune 114

OHRR 15F Rampage 4M

Lchmn Rampage 1098E

Dam:

OHRR Ms 925 Scarlett 15F

Big time maternal power here. Dam is a full sib to our 10H cow that sold for \$17,500 in our cow sale. Granddam 15F is simply one of the best we've ever owned(103 MPPA on 10 calves: 77 #BW, 696# WW. This heifer is long, fancy and dark red.

**Lot 54****Dam of Lot 54->****55****OHRR K22 MARGIE ROSE 114T**

OHRR/114T 3/29/2007 100% 1A 1197023

EPDs

BW	6.2
WW	41
YW	92
Milk	24
TM	49
Stay	13
Marb	-.10
REA	.40
Fat	.01
BW	97
WW	775
YW	1166

WR Mr. Red Dawg 5335

Buf Crk Valentino N031

Sire:

Tmas Ms Fortune 114

Jacobson Margie K22

Tassel Robin Hood 78E

Dam:

Dahlke Marjorie 147G

Powerhouse female here! High performance and made right with a very good dam whos calves are always near the top for pounds and dollars sold for. One daughter at TC Reds in WI and another in our herd. Total performance at its best!

**Lot 55****Dam of Lot 55 ->**

~ 25 ~

56**OHRR 79M COPPER ROSE 125T**

OHRR/125T 4/03/2007 100% 1A 1196991

EPDs

BW	-1.9
WW	34
YW	69
Milk	17
TM	34
Stay	14
Marb	-.01
REA	.13
Fat	.01
BW	67
WW	628
YW	824

WR Mr. Red Dawg 5335

Buf Crk Valentino N031

Sire:

Tmas Ms Fortune 114

OHRR 62B Copper Iola 79M

OHRR Dakota Copper 29K

Dam:

Leland Iola 62B

Young, feminine Red Dawg daughter with a hard working 29K mother from our foundation cow 62B. Her first calf sold for \$4600 to Texas in the Santa Sale II. Young but good.

57**JLRA RED STAR 24S**

JLRA/ 24S 9/15/2006 100% 1A 1147492

EPDs

BW	2.2
WW	28
YW	55
Milk	13
TM	27
Stay	9
Marb	-.03
REA	-.09
Fat	0
BW	86
WW	437
YW	834

CBR Ram 3109-936

BHR Rambo 862B

Sire:

CBR Audrey 936-45

Bieber Daphne 6067

Lman Robin Hood 1174B

Dam:

Bieber Daphne 4859

Nice fall heifer from a powerful Robin Hood daughter. Gerners, who had been a partner in the Red Power sale, decided to retire. We were able to purchase this heifer and her mother - one of his very best females.

58**JLRA FAYE 25S**

JLRA/ 25S 7/09/2006 100% 1A 1147493

EPDs

BW	0.1
WW	21
YW	41
Milk	14
TM	25
Stay	10
Marb	-.08
REA	-.25
Fat	0
BW	80
WW	463
YW	802

CBR Ram 3109-936

BHR Rambo 862B

Sire:

CBR Audrey 936-45

Jacobson Michelle L24

Glacier Grandure 864

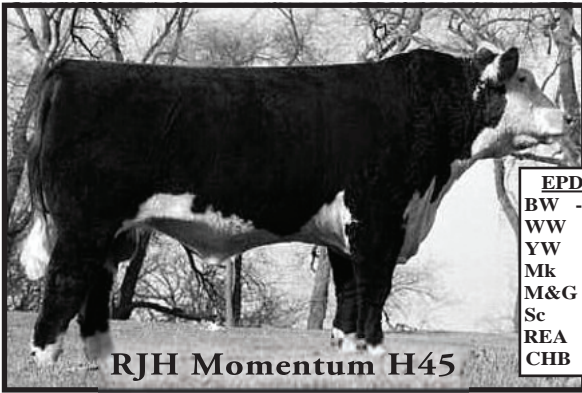
Dam:

DR Hly Hichelle

Half sister to the other heifer from Gerners. This one has a very maternal, calving ease pedigree also -they both trace to breed legend Rambo on the sire side.

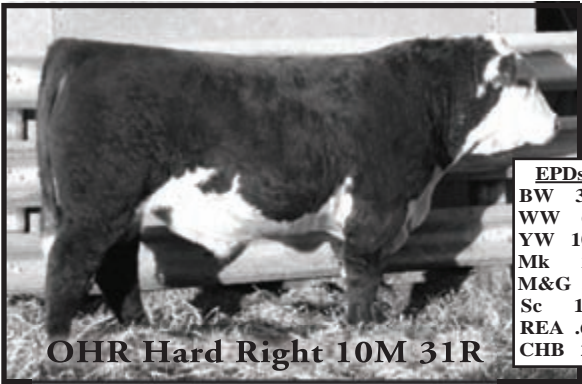
OHR legend & foundation sire - McIntosh 344 - with the girls

~ Polled Hereford Reference Sires ~



EPDs	
BW	-1.1
WW	66
YW	94
Mk	20
M&G	53
Sc	1.3
REA	.60
CHB	28

RJH Momentum H45



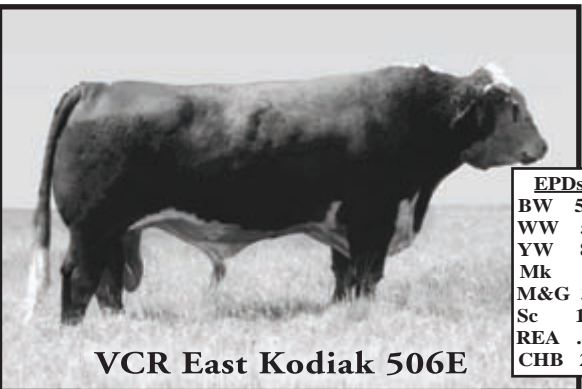
EPDs	
BW	3.4
WW	69
YW	108
Mk	22
M&G	56
Sc	1.6
REA	.66
CHB	29

OHR Hard Right 10M 31R



EPDs	
BW	6.7
WW	56
YW	97
Mk	25
M&G	53
Sc	1.0
REA	.46
CHB	26

HA Masterpiece M242



EPDs	
BW	5.7
WW	55
YW	86
Mk	8
M&G	35
Sc	1.4
REA	.45
CHB	22

VCR East Kodiak 506E

~ Polled Hereford Bulls ~

59

OHR THE MASTER 10M 39T

39T/OHRR 2/06/2007 100% 1A 42851494

EPDs

HA Masterpiece M242

Sire:

Remitall Governor 236G

HA Remtone 706G

OHR Mattie 91F 10M

Dam:

VCR East Kodiak 506E

Ta-Bar-EL 740C Reba 91F

BW	5.3
WW	57
YW	95
Milk	24
M&G	52
Sc	1.0
Fat	0
REA	.43
Marb	-.03
BW	88
WW	680
YW	1131

Good muscle shape, length, correct structure and pigmented. Dam is our best cow with 98 BWR and 115 WWR on 4 bull calves all selling in Red Power. One is Hard Right. He is in the top 10% or better for WW, YW, Milk, M&G, Sc, REA and CHB.



**Dam of lot 59->
As a 2 year old**



60

OHR CLASSIC 99R 44T

44T/OHRR 2/08/2007 100% 1A 42851456

EPDs

DR World Class 517 10H

Sire:

Feltons 517

VPI Marathon Lady 0081

OHR Gloria 55H 99R

Dam:

RJH Momentum H45

OHR Quest 55M

BW	1.9
WW	61
YW	93
Milk	22
M&G	52
Sc	1.3
Fat	.01
REA	.19
Marb	0
BW	76
WW	755
YW	1211

Excellent Heifer bull! He is long, smooth, pigmented and has enough muscle. He's a breed improver for 14 of the 15 catagories - in the top 5% for WW, YW, M&G, SC, BMI and CHB. World Class is very popular.



Lot 60

61**OHR PICASSO 212L 74T**

74T/OHRR 2/18/2007 100% 1A 42851498

EPDs

BW	6.1
WW	54
YW	88
Milk	18
M&G	44
Sc	.9
Fat	0
REA	.26
Marb	-.02
BW	101
WW	684
YW	1162

HA Masterpiece M242

Remitall Governor 236G

Sire:

HA Remtone 706G

Lake Ladonna 212L

VCR East Kodiak 506E

Dam:

Lady Enforcer 1036

Good muscle shape, deep ribbed, correct structure and pigmented. Excellent pedigree for performance, muscle, milk, and udder quality. Dam's heifer last year sold for \$6000 and has been showing well. Top 15% or better for WW, YW, Scr and CHB. Upper 25% for M&G and REA.

**Dam of lot 61->****62****STAR 2013 TROOPER 118T**

STAR/118T 1/22/2007 100% 1A 42774396

EPDs

BW	4.1
WW	41
YW	65
Milk	22
M&G	43
Sc	.6
Fat	-.01
REA	.19
Marb	-.06
BW	84
WW	729
YW	1157

HB Star Battle Ground 2103

C-S Pure Gold 98170

Sire:

MSU Miss Wrangler 61J

Mohican Jasmine 45R

Mohican TRM Java 25J

Dam:

Mohican Jasmine 157L

Big, thick, performance bull out of a hard working first calver that we Selected in the Star Lake sale. Balanced data, unique pedigree and a big performance bull.



63**OHR MASTERPIECE 82N 85T**

85T/OHRR 2/23/2007 100% 1A 42851497

HA Masterpiece M242

Sire:

Remitall Governor 236G

HA Remtone 706G

OHR Little Sister 82N

Dam:

Genetic Blitz 434V 0901

OHR Susie 30G

Complete, smooth structured dark bull from a solid producer. Dam traces to 434V and the great 6008 cow on the top. Granddam, 30G, and her mother were both Dams of Distinction here at OHR. Highly maternal pedigree and we think he will work on heifers too. Breed Improver for 12 of 15 catagories. Upper 25% for: Milk, REA and M&G.

EPDs

BW	3
WW	43
YW	69
Milk	21
M&G	42
Sc	.6
Fat	0
REA	.33
Marb	-.02
BW	86
WW	607
YW	962

64**OHR SPECIAL BLEND 303T ET**

303T/OHRR 3/02/2007 100% 1A 42851242

RJH Momentum H45

Sire:

3D No Limit 09E

JR Y168 Gloria C104

OXH Lola 8255

Dam:

OXH Advance 3007

OXH Judi 6258

Embryo calf from our donor 8255 and Momentum. Both have calving ease stamped in low birth weights. He's custom built for heifers! In The top 10% of the breed for BW, Milk, M&G, Sc and RA.

EPDs

BW	-0.7
WW	52
YW	75
Milk	26
M&G	52
Sc	1.2
Fat	.01
REA	.37
Marb	-.02
BW	84
WW	582
YW	984

65**OHR PRIME IT UP 302T ET**

302T/OHRR 2/27/2007 100% 1A 42851241

Mohican Prime Up 72P

Sire:

Mohican Mint 19M

Mohican Plus 107M

RJH H45 Betty N71

Dam:

RJH Momentum H45

Star Brooks 39K

Good, solid ET bull from Betty whos dam and granddam are both Dams of Distinction. We bought into Prime Up after seeing his \$54,000 Mother. He's a breed improver for 12 of 15 catagories and in the top 15% for WW, Sc and REA, and top 25% for YW, M&G, BMI and CHB.

EPDs

BW	2.9
WW	51
YW	79
Milk	19
M&G	44
Sc	.9
Fat	.01
REA	.37
Marb	0
BW	94
WW	623
YW	1051



**Dam of
Lot 65 ->**

**Sire of
lot 65**

<---



51S/OHR

2/09/2006

100% 1A

42697479

EPDs

BW	5.1
WW	48
YW	87
Milk	16
M&G	39
Sc	.7
Fat	-.01
REA	.38
Marb	-.16
BW	82
WW	606
YW	1076

BR Moler ET

Sire:

Remitall Online 122L

DML1 Dominette 820

Star T Bonita A6 68G

Dam:

WTK 55Y Bond 75A

Will- Via Miss Victoria A6

Moderate, complete, short marked, well muscled son of the National Champion, Moler. Dam is high volume, steady producer with a very nice udder. This 2 year old was a twin and has been Dehorned. He has an excellent pedigree loaded with donors and champions. Garndmother, A6 is a Dam of Distinction.



Lot 66

**Dam of
Lot 66 ->**

Olson's Red Power Advantage:

- + More performance, muscle & maternal excellence.
- + Carcass, performance, scrotal & pelvic data available.
- + Bulls tested for BVD & from Johnes Free herd.
- + Bulls developed on roughage ration to ensure soundness.
- + Free wintering on bulls over \$2500, 300 mile delivery.
- + \$50 discount if you take your bull home sale day.
- + Reputation breeder of quality registered cattle since 1936!

2008 Spring American Hereford Association EPD averages

<u>BW</u>	<u>WW</u>	<u>YW</u>	<u>Milk</u>	<u>TM</u>	<u>Sc</u>	<u>Marb</u>	<u>REA</u>	<u>Fat</u>
3.6	40	67	16	36	.6	0	.14	.004

Contact:

OLSON

Hereford Ranch

2713 166 Ave SE - Argusville, ND 58005

Carl Olson- (701) 361-0684 -olsoncandc@aol.com

www.olsonherefordranch.com*"We Breed Excitement!"*

~ Polled Hereford Heifers ~

67

OHR SUNNY 415E 71T

71T/OHRR 2/17/2007 100% 1A 42850814

EPDs

BW	2.6
WW	39
YW	65
Milk	17
M&G	37
Sc	.6
Fat	.02
REA	.44
Marb	.02
BW	71
WW	563
YW	878

Mohican Prime Up 72P

Sire:

Mohican Mint 19M

Mohican Plus 107M

MW Sunny 415E 1ET

Dam:

Remitall Boomer 46B

MW Sunny M11Z 1ET

Natural calf from our 46B donor that is a Dam of Distinction with a 106 WW ratio on her lifetime production. This heifer is very attractive, dark, well pigmented and balanced in her numbers.. Prime Up calves are born easy and built right. M11Z was the dam of Quest & sires.



68

OHR CLASSY 411P 72T

72T/OHRR 2/17/2007 100% 1A 42850836

EPDs

BW	4.2
WW	57
YW	92
Milk	17
M&G	46
Sc	1.0
Fat	0
REA	.47
Marb	-.10
BW	78
WW	567
YW	863

OHR Hard Right 10M 31R

Sire:

RJH Momentum H45

OHR Mattie 91F 10M

TS Cassandra 12G 411P

Dam:

Haroldson's Pringle 20X 12G

TS Cassandra 786 101L

One of our best heifers by Hard Right, our top WW, YW, REA and Scr bull of the 2005 calf crop - His maternal brother sell as lot 59. This heifer has good rib, pigment and a good uddered, productive young mother. Top 5% for WW, YW and REA.. Top 25% for M&G, Sc, CHB, BMI and Fat. Should make any excellent cow!



69**OHR CLASSY 57N 86T**

86T/OHRR 2/23/2007 100% 1A 42850800

EPDs

BW	5.8
WW	54
YW	91
Milk	18
M&G	45
Sc	1.2
Fat	.01
REA	.49
Marb	-.07
BW	88
WW	504
YW	842

OHR Hard Right 10M 31R

Sire:

RJH Momentum H45

OHR Mattie 91F 10M

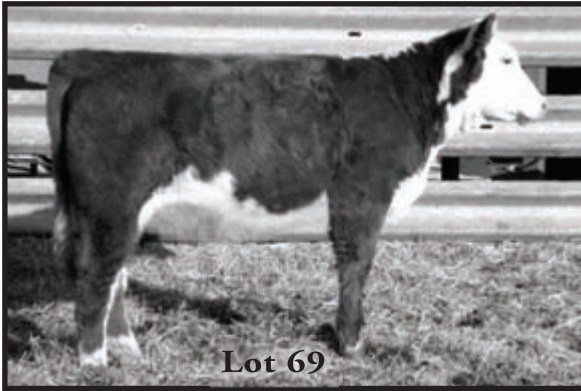
OHR Nikita 69F 57N

Dam:

VCR East Kodiak 506E

OHR Questiva 69F

Fancy Hard Right heifer from a good Kodiak daughter from a Dam of Distinction Quest daughter. She's in the top 10% for WW, YW, Sc, REA and top 20% for M&G, BII, BMI and CHB indexes.

**70****OHR REVLON 71P 105T**

105T/OHRR 3/09/2007 100% 1A 42851496

EPDs

BW	5.5
WW	52
YW	85
Milk	17
M&G	43
Sc	1.0
Fat	.002
REA	.41
Marb	0
BW	79
WW	545
YW	742

HA Masterpiece M242

Sire:

Remittal Governor 236G

HA Remtone 706G

OHR Nikita 931H 71P

Dam:

VCR East Kodiak 506E

Saddle-Valley 7C Jen 931H

The Masterpiece x Kodiak combination worked very well. Though this heifer is young she is packed with performance genetics and REA. She's fancy and attractive with good length. Top 10% for WW, Sc and REA. A breed improver for 12 or the 15 catagories.

71**OHR REVLON 30R 113T**

113T/OHRR 3/21/2007 100% 1A 42851495

EPDs

BW	5.9
WW	43
YW	79
Milk	18
M&G	40
Sc	.7
Fat	-.001
REA	.29
Marb	-.01
BW	67
WW	544
YW	802

HA Masterpiece M242

Sire:

Remittal Governor 236G

HA Remtone 706G

OHR Questiva F31 30R

Dam:

Mohican Quest 26C

NPH C41 Lady Magic F31

The first Masterpiece daughters have been very productive - 108.5% WWR on their calves. 30R is a solid young cow with good volume and milk. Top 25% for REA and YW. F31 produced a \$5500 heifer 4 years ago. This heifer was on a 2-year-old & young too.

72

OHR BETTY DAVIS 304T ET

304T/OHRR

2/24/2007

100% 1A

42850873

EPDs**Mohican Prime Up 72P**

Sire:

Mohican Mint 19M

Mohican Plus 107M

RJH H45 Betty N71

Dam:

RJH Momentum H45

Star Brooks 39K

Fancy heifer that is a full sib to the lot 65 bull. Our ET calves came in this fall lighter than we expected. We would expect more punch from this mating. N71 was close to 1200 # when they showed her at a year old. A breed improver for 12 of 15 categories -balance EPDs.

BW	2.9
WW	51
YW	79
Milk	19
M&G	44
Sc	.9
Fat	.01
REA	.37
Marb	0
BW	75
WW	475
YW	716

73

OHR SUNNY 415E 306T ET

306T/OHRR

3/02/2007

100% 1A

42851020

EPDs**RJH Momentum H45**

Sire:

3D No Limit 09E

JR Y168 Gloria C104

MW Sunny 415E 1ET

Dam:

Remitall Boomer 46B

MW Sunny M11Z ET

Here's a direct daughter of Momentum tat's pretty fancy. No semen is being sold on Momentum and few females have left our ranch. He is the only bull in the Hereford Breed to be in the Top 2% for BW, WW, REA, and CHB. Momentum daughter have ratioed 106 in prodn'. This heifer has good numbers is in the upper 25% for 10 categories.

BW	2.
WW	54
YW	83
Milk	20
M&G	46
Sc	.9
Fat	0
REA	.54
Marb	-.06
BW	90
WW	590
YW	776

74

OHR NANCY 40R 130T

130T/OHRR

4/13/2007

100% 1A

42850793

EPDs**OHR Hard Right 10M 31R**

Sire:

RJH Momentum H45

OHR Mattie 91F 10M

Mohican Nancy 40R

Dam:

Mohican Main Stream 29M ET

Mohican Nancy 155M

April heifer with good structure, femininity and growth for her age. In the top 10% for WW, YW, Milk, M&G, Sc, REA and CHB. Remember she's out of a 2-year-old and 2 months younger than most others.

BW	5.0
WW	62
YW	96
Milk	23
M&G	54
Sc	1.0
Fat	.01
REA	.45
Marb	-.05
BW	87
WW	572
YW	865



International Guests at OHR November 2007

75**OHR KEYSHA P606 120S**

120S/OHR 6/28/2006 100% 1A 42772196

EPDs

BW	5.1
WW	46
YW	71
Milk	29
M&G	52
Sc	.6
Fat	.01
REA	.55
Marb	-.07
BW	75
WW	572
YW	818

PW Victor Boomer P606

Remittal Boomer 46B

Sire:

PW Victoria 964 8114

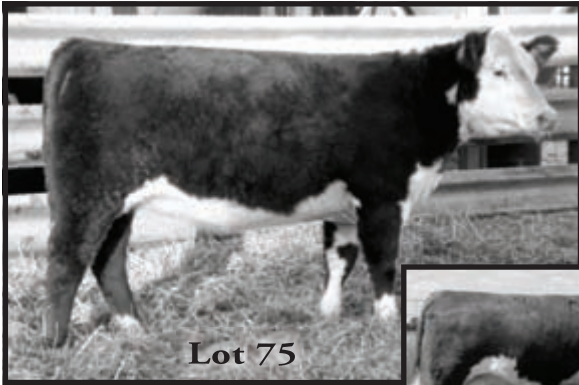
SSF Keysha 956

Remittal Keynote 20X

Dam:

SSF MSU Ms 15G 8619

Natural calf from our Keynote donor cow, Keysha - she's a full sister to the one at Star Lake that did the winning and produced the great ones a couple years ago. She in the top couple percent for REA, Milk and M&G. P606 daughters are really milking well!

**Lot 75**

**Dam of
Lot 75 ->**

**76****OHR FANTASIA 19N 122S**

122S/OHR 10/19/2006 100% 1A 42783788

EPDs

BW	5.6
WW	52
YW	80
Milk	12
M&G	38
Sc	.7
Fat	0
REA	.34
Marb	0
BW	88
WW	572
YW	865

Rangeline 19H Canyon 14M

FHF 8403 Starbuck 19H

Sire:

SVPH Amelia 648G

OHR Nikita 406E 19N

VCR East Kodiak 506E

Dam:

JAK 218Y Rarity 406E

Fall heifer that has extra muscle, good volume and a very complete, moderate structure. Her mother has a supper udder and has done a good job for us. She's in the top 20% of the breed for WW, YW, Fat, REA and CHB index. Should make a top cow.

**Dam of Lot 76 ->**

~ Commercial Heifers ~

77-81

5 Commercial Red Angus Heifers

We will be selling 5 commercial Red Angus Heifers born in February 2007. They ranged in weight from 830 to 925 on January 13th. They have been developed similar to the registered heifers in the sale. They are all close to solid red in color with the exception of one that has some white on the face. They will sell at the end of the sale.

More info sale day.



Winning Pen at North Star Classic



2000 BHSS Supreme Champion Pen of Bulls

Olson's Red Power Advantage:

- + More performance, muscle & maternal excellence.
- + Carcass, performance, scrotal & pelvic data available.
- + Bulls tested for BVD & from Johnes Free herd.
- + Bulls developed on roughage ration to ensure soundness.
- + Free wintering on bulls over \$2500, 300 mile delivery.
- + \$50 discount if you take your bull home sale day.
- + Reputation breeder of quality registered cattle since 1936!

~ Notes ~



2007 National Red Angus Show -Senior Champion Female