

Red Power

Performance Bull Sale

65 Red Angus Bulls

28 Red Angus Heifers

15 Polled Hereford Bulls

6 Polled Hereford Heifers



– Thursday, 1:00 PM (CST) –

Feb 15, 2007

ND Winter Show Building
Valley City, ND

Red Power
Performance Breeders

OHR Red Angus
Lloyd Red Angus
Gerner Red Angus
Olson Hereford Ranch

- General Information -

Sale Time: 1:00 CST, Thursday, February 15, 2007

A noon lunch will be served on sale day.

Location: Main Arena of the North Dakota Winter Show building in Valley City, ND – just north of Interstate 94 at exit 292 and up the hill one mile.

Motels: Headquarters – AmericInn (701) 845-5551

Delivery: Free delivery to central points up to 300 miles and further distances at cost. Take your bull home sale day and get \$50 off.

Free Wintering until April 1st of any bull purchase of \$2,500 or more.

Guarantee: All cattle are fully guaranteed according to the standards set by the American Red Angus and American Hereford Associations.

Terms: Terms of the sale are cash or check.

Settlement must be made immediately following the sale before animals can be loaded or delivered. Every animal sells to the highest bidder. Any correction from the auction stand takes precedence over printed material in the catalog.

EPDs: All EPDs are current as of January 8, 2007. Registration numbers are provided so you can research animals further at breed web sites:

www.redangus.org or **www.hereford.org**.

Cattle on Display: All sale cattle will be available for viewing from 3 to 7 PM on Wednesday, February 14 and 9 AM to 1 PM Sale Day in the comfortable ND Winter Show building – parking on North and West ends. Each breeder will be caring for their own animals prior to the sale. We invite you to stop and inspect the cattle in their native setting.

Supplement Sheet: More information will be available upon request one week prior to the sale and available sale day, including: Ribeye Area, Back Fat, Marbling, Pelvic Area and Scrotal Measurement, EPDs, Birth Wt., Weaning Wt., and Yearling Wt., are all provided in the catalog. We hope to provide you with the most accurate information possible so when you see the bulls you can make the best decision for your program.

Mail and Phone Bids: Bidders unable to make the sale may contact the sale staff or make prior arrangements to be on a sale day phone.

Sale Staff – Cell Phones

Neal Effertz, Auctioneer (701) 471-0153
Art Handel, Handel Marketing (605) 391-8233
Terry Robinson, Farm & Ranch Guide (701) 471-5153
Jay Effeldt, AHA..... (308) 386-2640
Carl Olson, Sale Manager (701) 361-0684
Bryan Gill, Big Red Genetics (701) 730-0134



Sale Day Phone

Auction Block..... (701) 845-2555
Edward Olson, cell (701) 238-3601
Carl Olson, cell (701) 361-0684

Noon Lunch ♦ 1:00 Sale
Thursday, February 15, 2007

Dear Cattlemen,

Welcome to the RED POWER PERFORMANCE BULL SALE on Thursday, February 15. We are your Northern source for quality bulls: OHR Red Angus, Lloyd Red Angus, Gerner Red Angus and Olson Hereford Ranch. We are 4 breeders with one goal of "Genetic Excellence." We share many of the same thoughts, goals and exciting vision for the future of the beef cattle industry.

The sale offering includes: 65 High Performance Red Angus Bulls, 28 Select Red Angus Heifers, 15 Excellent Polled Hereford Bulls, and 6 Polled Hereford Heifers. We have selected only the best bulls so that the highest quality can be made available for your selection. Performance is priority, but the sale offering will include: Calving ease, high maternal, superior carcass and growth bulls (many will excel in most traits). Every effort has been made to bring you the highest quality bulls backed by the most accurate information possible so you can select the best bull for your breeding program.

As the catalog gets mailed out the testing continues. A supplement sheet with a sample of the bulls and heifers selling will be mailed to you a week before the sale with additional data including: Carcass Data from Ultrasounding, Pelvic Area, and Scrotal Measurements.

Should you need additional information please feel free to contact any of us. See you on the 15th!

Sincerely,
Red Power Performance Breeders

Table of Contents

OHR Red Angus bulls	p. 3-17
Lloyd Red Angus bulls	p. 18-22
Gerner Red Angus bulls	p. 23-26
OHR Red Angus heifers	p. 27-31
Lloyd Red Angus heifers	p. 31-33
Gerner Red Angus heifers	p. 33-35
Olson Hereford Ranch bulls	p. 36-42
Olson Hereford Ranch heifers	p. 43 - Back Cover

OHR Red Angus

Edward & Jeanne Olson
16068 24th St SE
Argusville, ND 58005
(701) 484-5779
cell (701) 238-3601

Lloyd Red Angus

Ed & Sue Lloyd
Box 248
Northwood, ND 58267
(701) 587-5080
agvfarm@polarcomm.com

Gerner Red Angus

Joe & Laverne Gerner
10504 Hwy 32 N
Hitterdal, MN 56552
(218) 962-3320
lgerner@tvutel.com

Olson Herford Ranch

Carl Olson
2713 166th Ave SE
Argusville, ND 58005
(701) 361-0684
olsoncandc@aol.com

The Red Color of Red Angus Has 3 Distinct Advantages

1. Red is the most populous color of cattle breeds world wide. Red Angus provides a continuity and uniformity of color to any crossbreeding system.
2. Red is more heat tolerant than black and the bronze pigmentation gives great resistance to cancer eye and sunburned udders. The majority of the world's cattle are in areas that need heat tolerance, so the red color is a definite advantage.
3. Being crossed red always breeds true. Red Angus carry no diluter genes and thus avoid the grays that result when crossbreeding with blacks.

Red Angus bulls make a great cross with many breeds to increase fertility, improve calving ease, moderate mature frame type, add maternal excellence and improve efficiency. Red Angus bulls are known to work especially well on Simmental and Charolais heifers. Calving ease and fertility are important because if the calf dies at birth or if the cows are open, there's nothing to wean. There are many Red Angus feeder calf sales to help you gain an additional premium for those Red Angus sired calves. Put the RED FACTOR to work in your program!

We Have What Everybody Wants,

The Respect of the Entire Cattle Industry . . .



. . . and it's not because of the color of our hide

Spring 2007 Red Angus Breed Average EPDs

<u>BW</u>	<u>WW</u>	<u>YW</u>	<u>M</u>	<u>TM</u>	<u>ST</u>	<u>Marb</u>	<u>REA</u>	<u>Fat</u>
0.4	32	57	17	33	11	.06	.01	.00

BW = Birth Weight
WW = Weaning Weight
YW = Yearling Weight

M = Milk
TM = Total Maternal
ST = Stayability

Marb = Marbling Score
REA = Rib Eye Area
Fat = Back Fat Thickness

OHR Red Angus Lots 1 – 38

1 OHRR 3P RAMS ADVNTG 5S

OHRR/5S 1/14/06 100% 1A 1130256

4L ADVANTAGE R9N

PERKS ADVANCER 9088

4L MS MAKE MY DAY R903

OHRR 62M RAMS LASS 3P

OHRR 67G RAMPAGE 100M

OHRR 9502 RAMS EVE 62M

A first calf out of a granddaughter of 9502 - dam of popular ABS sire OHRR Dakota Copper 29K. We are impressed with our 100M daughters as well as calves from R9N. 5S is a long individual with lots of eye appeal. Note the super weights and powerful EPDs. Dam's MPPA: 102.

EPDs	
BW	3.7
WW	41
YW	71
M	19
TM	40
ST	11
Marb	-.01
REA	-.07
Fat	-.01
BW	86
WW	797
YW	1187



Lot 1

2 OHRR 15L 10S

OHRR/10S 1/23/06 100% 1A 1130663

4L ADVANTAGE R9N

PERKS ADVANCER 9088

4L MS MAKE MY DAY R903

OHRR 65H MAHOGNY 15L

GLACIER EXPLORER 740

OHRR 508 MAHOGANY 65H

A great bull out of a great sire and our Mahogany cow family. We would recommend this bull entirely on the cow power we have here — these are beautiful and productive dams and his females will be also.

EPDs	
BW	3.6
WW	37
YW	64
M	20
TM	39
ST	10
Marb	-.02
REA	-.16
Fat	.00
BW	91
WW	707
YW	1256



Lot 2

3**OHRR 92M MACKS KING 11S**

OHRR/11S

1/23/06

100% 1A

1130321

RBRTS MCINTOSH II 344

MC INTOSH RED 910

RBRTS CLASS LASS9447

OHRR 388 KING PENN 92M

BJR KING OF KINGS 942

PANHANDLE PENNY 388

Sired by Mac 344 he's guaranteed to produce both great bulls and females. His dam's first calf, a heifer, sold in the Santa Sale II for \$4,000 — last years 5R bull weaned at 730 with a YWT of 1351. This deep, thick muscled bull has it all.

Retaining 1/2 semen interest.

EPDs	
BW	1.6
WW	29
YW	47
M	18
TM	32
ST	7
Marb	-.03
REA	-.04
Fat	.01
BW	82
WW	655
YW	1173

4**OHRR 78L ADVANTAGE 27S**

OHRR/27S

1/30/06

100% 1A

1130313

4L ADVANTAGE R9N

PERKS ADVANCER 9088

4L MS MAKE MY DAY R903

OHRR KF 740 GOLD PENNY 78L

GLACIER EXPLORER 740

OHRR 388 GOLD PENNY 9J

A bull with a solid maternal recommendation. He is smooth and long and would do a great job in heifers. Note th 64lb. to 628 at weaning — plus 23 milk!

EPDs	
BW	-2.1
WW	20
YW	42
M	23
TM	33
ST	10
Marb	-.02
REA	-.19
Fat	.00
BW	64
WW	628
YW	1086

5**OHRR 023 RED ADVANTAGE 14S**

OHRR/14S

1/25/06

100% 1A

1130263

4L ADVANTAGE R9N

PERKS ADVANCER 9088

4L MS MAKE MY DAY R903

GMRA JUANA 023

LCHMN RED SPREAD 1271F

GMRA JUANA 329

R9N son with good rib and muscle, moderate framed, dark in color, and a sound easy keeper. His dam has raised a top calf every year — she's one of our most attractive cows with a super udder and phenotype. MPPA: 102.

EPDs	
BW	.6
WW	37
YW	71
M	20
TM	39
ST	11
Marb	-.04
REA	.16
Fat	.00
BW	73
WW	698
YW	1223



6

OHRR 56N COPPER CHIEF 15S

OHRR/15S

1/27/06

100% 1A

1130666

OHRR DAKOTA COPPER 29K

LCHMAN COPPER ROB 1204D

MESSMER OPHELIA 9502

OHRR 63G ADV MAHOGANY 56N

RBJR ADVANCE A709

OHRR MS MAHOGANY 63G

EPDs	
BW	.2
WW	40
YW	70
M	17
TM	37
ST	14
Marb	-.03
REA	-.04
Fat	.01
BW	73
WW	737
YW	1279

Great bull out of one of the two best replacement females in the N class — the other selling to Schumachers Trust, Kansas, at \$9,000.

Sired by the total bull, Dakota Copper, we highly recommend 15S if you want the best of the best.

Dam's MPPA on 2nd calf: 103



7

OHRR 68J DAKOTA SAM 25S

OHRR/25S

1/30/06

100% 1A

1130308

OHRR DAKOTA COPPER 29K

LCHMAN COPPER ROB 1204D

MESSMER OPHELIA 9502

OHRR RAMS SAMARIA 68J

LCHMN RAMPAGE 1098E

RBRTS SAMARIA-BMR 5114

EPDs	
BW	.1
WW	31
YW	53
M	19
TM	34
ST	14
Marb	-.06
REA	-.16
Fat	.01
BW	77
WW	668
YW	1290

A powerful maternal pedigree with 5114, Rampage, and 9502, dam of ABS sire 29K, who was bred and raised here. His sons and daughters are in demand for good reason — they work well wherever they go.



8**OHRR 46G CUB DIVIDE 33S**

OHRR/33S

2/1/06

100% 1A

1130292

LCC DIVIDE 1435K

GLACIER DIVIDE 310

CJ'S HOBO MABLE

OHRR 925 CUB LASS 46G

GLACIER CUB 446

MS NEO-SHO MEMORIALA925

Smooth, dark, moderate framed, thick and deep, with good testicle development. His dam is a favorite here for her excellent production and her eye appeal. Dam's MPPA: 103.

EPDs	
BW	.9
WW	29
YW	52
M	21
TM	36
ST	7
Marb	.06
REA	-.12
Fat	-.01
BW	83
WW	709
YW	1258

**Lot 8****9****DHRR 62M RED CANYON 34S**

OHRR/34S

2/2/06

100% 1A

1130304

SRR RED CANYON 213

LCHMN GRANDCANYON 1244G

BLUE RIDGE KIMA 950

OHRR 9502 RAMS EVE 62M

LCHMN RAMPAGE 1098E

MESSMER OPHELIA 9502

Power bull here: performance, super muscle and rib, big testicles, dark color, and backed by the carcass sire Red Canyon and a great Rampage 9502 cow! MPPA: 103.

Help yourself to a herd bull you can depend on!

EPDs	
BW	5.1
WW	51
YW	83
M	20
TM	45
ST	14
Marb	.13
REA	.03
Fat	-.01
BW	93
WW	794
YW	1410

**Lot 9**

10**OHRR CNYN EXPLORER 38S**

OHRR/38S

2/3/06

100% 1A

1130265

SRR RED CANYON 213

LCHMN GRANDCANYON 1244G

BLUE RIDGE KIMA 950

OHRR 4K-ULTRA FAYET 12M

GLACIER EXPLORER 740

OHRR 50H ULTRA CUB 4K

Dam is a 3-year-old with MPPA of 104. No nonsense here! This 12M has two powerful daughters in our herd. Her first calf, 33P, was dam to the first lot in Santa III sale and sold for \$5,000 to SEM in South Carolina. Granddam, 4K, produced our second top bull in '06 sale at \$7,000 (1/2 interest) to Gregg Ranches in South Dakota.

EPDs	
BW	-8
WW	36
YW	66
M	23
TM	41
ST	12
Marb	.14
REA	-.03
Fat	.00
BW	66
WW	768
YW	1243

**Lot 10****11****OHRR 14M GRND DIVIDE 41S**

OHRR/41S

2/4/06

100% 1A

1130267

OHRR 10H DIVIDE 77M

LCC DIVIDE 1435K

OHRR MS SCARLETT 10H

OHRR 65H GRAND MAHOGANY 14M

LCHMN GRANDCANYON 1244G

OHRR 508 MAHOGANY 65H

A big, long, high performance, super attractive bull out of our perfect uddered, moderate, 14M cow (102 MPPA). This pedigree is packed with great individuals — great production and super EPDs here!

EPDs	
BW	2.4
WW	40
YW	70
M	20
TM	40
ST	10
Marb	.03
REA	.09
Fat	.01
BW	76
WW	781
YW	1397

**Lot 11****14M - Dam of Lot 6**

12**OHRR 30J DAKOTA MACK 35S**

OHRR/35S

2/2/06

98.8% 1B

1130280

OHRR DAKOTA COPPER 29K

LCHMAN COPPER ROB 1204D

MESSMER OPHELIA 9502

OHRR 35B MACS LELA 30J

RBRTS MCINTOSH II 344

LELAND RIMTOP 416-35B

98.8% - Category 1B

A correct, deep bodied bull out of a super cow — dam of a top seller in '05 to Spur Ranch in South Dakota at \$3,750. A granddaughter topped our female sale in '06.

EPDs	
BW	1.8
WW	38
YW	58
M	15
TM	34
ST	12
Marb	-.04
REA	-.04
Fat	.01
BW	82
WW	687
YW	1205

13**OHRR 107J LANDSLIDE 47S**

OHRR/47S

2/6/06

100% 1A

1130341

PIE AVALANCHE 381

PERKS ADVANCE 121R

PIE MS GRAND C 036

SHHM ANNABELLE 107J

SHHM ROBIN HOOD 117G

SHHM RED REBELLE 02E

ET full brother to the 113R July bull — smooth and correct and out of a great cow. MPPA: 106.

EPDs	
BW	3.0
WW	37
YW	65
M	19
TM	38
ST	9
Marb	.05
REA	.26
Fat	.00
BW	82
WW	673
YW	1222

14**OHRR KRA 9J ADV GOLD 58S**

OHRR/58S

2006

100% II

1130664

4L ADVANTAGE R9N

PERKS ADVANCER 9088

4L MS MAKE MY DAY R903

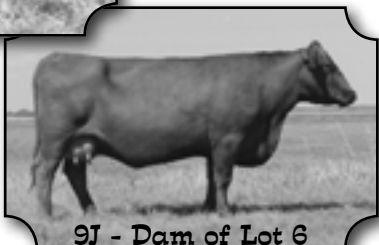
OHRR 388 GOLD PENNY 9J

LCHMN RAMPAGE 1098E

PANHANDLE PENNY 388

Maternal half-brother to '06 third top selling bull to Jeff and Jamie Earles in Oklahoma. The great 9J dam died before he was weaned or we are sure his AWW and yearling would have been higher. Dam's MPPA: 102; Granddam's MPPA: 109.

EPDs	
BW	3.0
WW	39
YW	65
M	20
TM	39
ST	9
Marb	-.01
REA	-.10
Fat	.00
BW	81
WW	651
YW	1109

**Lot 14****9J - Dam of Lot 6**

15**OHRR 9930 ROB DIVIDE 56S**

OHRR/56S

2/10/06

100% 1A

1130330

LCC DIVIDE 1435K

GLACIER DIVIDE 310

CJ'S HOBO MABLE

SEXTON'S SEMONE 9930

LMAN KING ROB 8621

JKG SEMONE II Y971

Correct, smooth bull with great production records. Dam is a moderate, good milker who is putting out good ones every year. Recommended for heifers.

EPDs	
BW	.6
WW	33
YW	62
M	16
TM	32
ST	10
Marb	-.07
REA	-.03
Fat	.01
BW	78
WW	702
YW	1244

16**OHRR 63K ADVANTAGE 65S**

OHRR/65S

2/13/06

100% 1A

1130306

4L ADVANTAGE R9N

PERKS ADVANCER 9088

4L MS MAKE MY DAY R903

OHRR 4039 MS SUMMER 63K

RBRTS MCINTOSH II 344

MS FORSTER BARON 4039

A maternal brother to the second top bull in the '04 sale at \$5,250 to Dean Stroh at Tappen. This is a cow that was named Supreme Female in the NDWS Junior Futurity in '01 — her dam, 4039, also won two Supreme Female awards.

EPDs	
BW	5.9
WW	43
YW	71
M	16
TM	38
ST	9
Marb	-.01
REA	.11
Fat	-.01
BW	87
WW	705
YW	1271

17**OHRR 214 RB CENT JR 67S**

OHRR/67S

2/14/06

100% 1A

1130272

RED BAKERS CENTURY

RED TOWAW MATRIX 19D

RED MEM MINOLA 71E

PFFR MS LASS 214

BJR JR 105

OHRR CRIMSON LASS 2H

Dam is an awesome cow with extra thickness and a perfect udder. She has given us two beautiful replacement heifers that are much like her. Check birth to weaning and solid EPDs.

Sire is Canadian two time Agribition champion.

EPDs	
BW	1.2
WW	31
YW	55
M	13
TM	29
ST	9
Marb	-.04
REA	-.03
Fat	-.01
BW	73
WW	699
YW	1181

18**OHRR 48L CANYON RAM 72S**

OHRR/72S

2/16/06

100% 1A

1130295

SRR RED CANYON 213

LCHMN GRANDCANYON 1244G

BLUE RIDGE KIMA 950

OHRR 1098 CLASSY 48L

LCHMN RAMPAGE 1098E

OHRR 925 CUB LASS 46G

Maternal and carcass power combined here. Rampage females are treasured here and 48L is one of the best. MPPA: 105. Red Canyon will add carcass value.

This bull's full sister, 72P (MPPA: 102), weaned her first calf this year (BW: 69; AWW: 708) at the top of her class!

EPDs	
BW	2.3
WW	36
YW	63
M	24
TM	42
ST	13
Marb	.15
REA	-.04
Fat	-.01
BW	84
WW	710
YW	1222

19**OHRR 31K MAC DIVIDE 70S**

OHRR/70S

2/16/06

100% 1A

1130282

OHRR 10H DIVIDE 77M

LCC DIVIDE 1435K

OHRR MS SCARLETT 10H

OHRR 503 MAC SHAREE 31K

RBRTS MCINTOSH II 344

BADLANDS SHAREE 503

Big, rugged, high performance bull with length of body, good muscle and eye appeal like we'd expect from 77M. Dam, 31K, is one of our best — we have three maternal sisters!

Great EPDs and super performance numbers to go with!

EPDs	
BW	2.5
WW	33
YW	53
M	18
TM	35
ST	10
Marb	-.04
REA	-.04
Fat	.00
BW	83
WW	737
YW	1310



31K - Dam of Lot 19

20**OHRR 78P HI HO CHEROKEE 73S**

OHRR/73S

2/17/06

100% 1A

1130314

OHRR 99L COPPER HI HO 108N

OHRR DAKOTA COPPER 29K

OHRR 096 HI HO LASS 99L

OHRR CHEROKEE F10 78P

BFCK CHEROKEE CNYN 4912

LARSON FLO-MARIE 185

First calf out of an ET daughter of the famous \$50,000 Flo Marie cow and Cherokee Canyon. 108N sire is a super bull raised here and owned with Lost Meadows Farm and Gerners in MN.

Great EPDs and powerful production records — he'll do a great job!

EPDs	
BW	1.0
WW	37
YW	58
M	23
TM	41
ST	13
Marb	
REA	
Fat	
BW	78
WW	744
YW	1238

21**OHRR 55L R9N CLASSIC 78S**

OHRR/78S

2/19/06

100% 1A

1130300

4L ADVANTAGE R9N

PERKS ADVANCER 9088

4L MS MAKE MY DAY R903

OHRR RAMS CLASSY 55L

LCHMN RAMPAGE 1098E

OHRR MS CLASSY 53

Big, strong, smooth and correct! Lots of great females in this pedigree.

Not recommended for heifers.

EPDs	
BW	6.0
WW	44
YW	71
M	18
TM	39
ST	10
Marb	-.02
REA	-.07
Fat	.00
BW	96
WW	702
YW	1214

OHRR/88S

3/2/06

100% 1A

1130319

OHRR DAKOTA COPPER 29K

LCHMAN COPPER ROB 1204D

MESSMER OPHELIA 9502

OHRR MACS SOPHIA 91F

RBRTS MCINTOSH II 344

LMB ST SOPHIA 704

One of the top bulls in the sale in our opinion — great muscle pattern, dark cherry red, correct, with plenty of eye appeal! His dam and granddam are foundation cows. Sire, 29K, is rock solid in all categories!

EPDs	
BW	3.9
WW	35
YW	53
M	13
TM	31
ST	11
Marb	-.07
REA	-.01
Fat	.01
BW	94
WW	664
YW	1182



Lot 22

OHRR/92S

3/5/06

100% 1A

1130279

OHRR DAKOTA COPPER 29K

LCHMAN COPPER ROB 1204D

MESSMER OPHELIA 9502

OHRR MACS SHAREE 25L

RBRTS MCINTOSH II 344

BADLANDS SHAREE 503

Correct and attractive phenotypically with super muscle shape. We can't say enough about his sire and dam — both great individuals. In our opinion this is a great mating — this is a great bull!

Note 706 AWW and great EPDs!

EPDs	
BW	1.8
WW	38
YW	59
M	18
TM	36
ST	13
Marb	-.11
REA	-.10
Fat	.01
BW	83
WW	706
YW	1255



Lot 23

OHRR/98S

3/13/06

100% 1A

1130665

OHRR DAKOTA COPPER 29K

LCHMAN COPPER ROB 1204D

MESSMER OPHELIA 9502

OHRR 67G RAMS LASS 87L

LCHMN RAMPAGE 1098E

OHRR 096 CUB LASS 67G

Just a mid-March bull. He'll catch the older bulls and be a great herd bull.

Out of popular ABS sire, 29K, who does everything right. 87L, 67G, and Lass 096 are awesome cows.

We like the strong potential in this bull.

EPDs	
BW	-3.2
WW	22
YW	42
M	21
TM	32
ST	14
Marb	-.07
REA	-.25
Fat	.01
BW	67
WW	647
YW	1116

OHRR/99S

3/14/06

100% 1A

1130339

SRR RED CANYON 213

LCHMN GRANDCANYON 1244G

BLUE RIDGE KIMA 950

OHRR 78L PENNY DIVA 44P

OHRR 10H DIVIDE 77M

OHRR KF 740 GOLD PENNY 78L

Young bull with a great dam — 68 lbs. to 775 just what we like in a first calf. (MPPA: 101)

EPDs are strong and balanced. He'll do a great job!

EPDs	
BW	.2
WW	37
YW	66
M	23
TM	41
ST	12
Marb	.13
REA	.02
Fat	.00
BW	68
WW	775
YW	1274

OHRR/107S

4/4/06

100% 1A

1130329

4L ADVANTAGE R9N

PERKS ADVANCER 9088

4L MS MAKE MY DAY R903

SHHM ANNABELLE 209P

SHHM CHIEF JOSEPH 56M

SHHM ANNABELLE 107J

Hit the Jackpot! Mr. Built-Right — lots of muscle and rib. This young dam promises to be one of the best — her dam is a donor cow and dam of 113R in this sale.

Jackpot 107S is surely destined to be a great herd sire.

We'll retain a 1/2 semen interest. We would like possession April 1 to May 15.

EPDs	
BW	2.9
WW	39
YW	67
M	18
TM	37
ST	11
Marb	.04
REA	.14
Fat	.00
BW	79
WW	857
YW	1393



Lot 26

27**OHRR 0120 COPPER VISION 210S**

OHRR/201S

2/2/06

100% 1A

1130333

4L SUPER VISION R2292

GLACIER CHATEAU 744

4L MR RAMBO R709

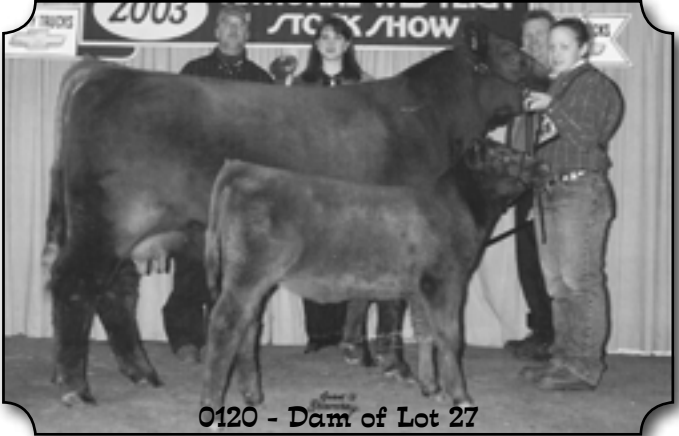
BJR CCC COPPERLASS 0120

LMAN KING ROB 8621

BJR COPPERLASS 9F

ET calf raised in a commercial herd — out of classy donor cow, Copperlass 0120, a powerful, attractive, super producer that never fails. Sire is popular Denver champion, Super Vision.

EPDs	
BW	1.5
WW	36
YW	70
M	21
TM	39
ST	15
Marb	.03
REA	.10
Fat	.01
BW	72
WW	538
YW	1024

**28****OHRR 107J AVALANCHE 202S**

OHRR/202S

2/2/06

100% 1A

1130334

PIE AVALANCHE 381

PERKS ADVANCE 121R

PIE MS GRAND C 036

SHHM ANNABELLE 107J

SHHM ROBIN HOOD 117G

SHHM RED REBELLE 02E

Raised in a commercial herd. ET calf. Gained 3.04 per day since weaning. Has done a great job of catching up to OHR raised calves.

Super pedigree — 107J cow is an awesome individual. MPPA:106

EPDs	
BW	3.0
WW	37
YW	65
M	19
TM	38
ST	9
Marb	.05
REA	.26
Fat	.00
BW	84
WW	573
YW	1116



29**OHRR 142 MR RED HAWK 204S**

OHRR/204S

2/8/06

100% 1A

1130336

LCC MAJOR LEAGUE A502M

BFCK CHEROKEE CNYN 4912

KRN REBA'S ROBIN

EEA 142

RCRA WHEEL'O FORTUNE

EEA 472-4603

ET calf raised in a commercial herd. Out of the high dollar Major League and the top performance cow in Sid Brenner's dispersion. MPPA: 109. This is a very good bull that will do a great job in any herd.

Retaining 1/2 semen interest.

EPDs	
BW	1.5
WW	38
YW	56
M	21
TM	39
ST	10
Marb	.10
REA	.23
Fat	.01
BW	76
WW	637
YW	1096

30**OHRR 5114 COMBINATION 206S**

OHRR/206S

2/20/06

100% 1A

1130343

LSF COMBINATION A301M

LCHMN TOP BRASS 1049H

WHF LASS 27G-29J

RBRTS SAMARIA-BMR 5114

SSS BOOMER 803B

RBRTS DALMARIE 153A

ET calf raised in a commercial herd. Extreme drought and no creep feed. These calves were on their own. The genetics are here and most have recovered very well. Dam's MPPA is 107 and Granddam's MPPA is 108.

EPDs	
BW	4.1
WW	43
YW	73
M	14
TM	35
ST	12
Marb	.10
REA	.07
Fat	.00
BW	83
WW	561
YW	1072

31**OHRR 5114 COMBINATION 207S**

OHRR/207S

2/20/06

100% 1A

1130344

LSF COMBINATION A301M

LCHMN TOP BRASS 1049H

WHF LASS 27G-29J

RBRTS SAMARIA-BMR 5114

SSS BOOMER 803B

RBRTS DALMARIE 153A

ET raised in a commercial herd with extreme drought and no creep feed. Considering their environment they have done very well catching up.

Genetics here are absolute top shelf. Dam's MPPA: 107; Granddam MPPA: 108

EPDs	
BW	4.1
WW	43
YW	73
M	14
TM	35
ST	12
Marb	.10
REA	.07
Fat	.00
BW	84
WW	578
YW	1022

32**OHRR 5114 COMBINATION 208S**

OHRR/208S

2/21/06

100% 1A

1130345

LSF COMBINATION A301M

LCHMN TOP BRASS 1049H

WHF LASS 27G-29J

RBRTS SAMARIA-BMR 5114

SSS BOOMER 803B

RBRTS DALMARIE 153A

ET raised in a commercial herd with extreme drought and no creep feed. Genetics in this bull are the best. We are confident these calves will do a great job.

Combination cattle have extra performance and thickness. Dam 5114 has MPPA; 107; Granddam MPPA: 108.

EPDs	
BW	4.1
WW	43
YW	73
M	14
TM	35
ST	12
Marb	.10
REA	.07
Fat	.00
BW	86
WW	577
YW	1177

33**OHRR 107J ADVANTAGE 209S**

OHRR/209S

2/24/06

100% 1A

1130346

4L ADVANTAGE R9N

PERKS ADVANCER 9088
4L MS MAKE MY DAY R903

SHHM ANNABELLE 107J

SHHM ROBIN HOOD 117G
SHHM RED REBELLE 02E

ET raised in a commercial herd with extreme drought and no creep feed. These calves have been at a big disadvantage but have recovered well on feed.

Dam is awesome to look at and very productive. MPPA: 106.

EPDs	
BW	3.6
WW	39
YW	64
M	21
TM	40
ST	9
Marb	.03
REA	.13
Fat	.00
BW	91
WW	549
YW	1127

34**OHRR 18B COPPER FOXX 210S**

OHRR/210S

2/28/06

100% 1A

Pending

OHRR DAKOTA COPPER 29K

LCHMAN COPPER ROB 1204D
MESSMER OPHELIA 9502

ROBERTS PR-FOXXY 18B

RED BBCC PRESIDIO 5Z
RBRTS FOXY ROXY 2398

ET raised in commercial herd with drought and no creep. These bulls will catch up and will do a great job. Genetics are superior. 29K is very popular ABS sire born and raised here. Dam, 18B, is our highest MPPA cow at 110!

EPDs	
BW	-.3
WW	39
YW	67
M	21
TM	40
ST	
Marb	
REA	
Fat	
BW	88
WW	549
YW	1068

35**OHRR 18B COPPER FOXX 211S**

OHRR/211S

3/1/06

100% 1A

Pending

OHRR DAKOTA COPPER 28K

LCHMAN COPPER ROB 1204D
MESSMER OPHELIA 9502

ROBERTS PR-FOXXY 18B

RED BBCC PRESIDIO 5Z
RBRTS FOXY ROXY 2398

ET raised in commercial herd with drought and no creep. These bulls will catch up and will do a great job. Genetics are superior. 29K is very popular ABS sire born and raised here. Dam, 18B, is our highest MPPA cow at 110!

EPDs	
BW	-.3
WW	39
YW	67
M	21
TM	40
ST	
Marb	
REA	
Fat	
BW	85
WW	547
YW	1080



29K - Sire of Lots 34 and 35

36**OHRR 61K-18B ADVANTAGE 117R**

OHRR/117R

10/10/05

100% 1A

1098110

4L ADVANTAGE R9N

PERKS ADVANCER 9088

4L MS MAKE MY DAY R903

OHRR FOXXY ROXY 61K

LCHMN RAMPAGE 1098E

ROBERTS PR-FOXXY 18B

October bull with all the bases covered. Granddam, Foxy 18B, is our highest MPPA at 110 and holds her spot without challenge. His dam is one of our best and out of the maternal/carcass sire, Rampage.

We think 117R will work well in any program.

EPDs	
BW	3.0
WW	39
YW	68
M	16
TM	35
ST	11
Marb	.00
REA	-.05
Fat	.00
BW	77
WW	652
YW	1275

**37****OHRR 107J LANDSLIDE 113R**

OHRR/113R

7/6/05

100% 1A

1130253

PIE AVALANCHE 381

PERKS ADVANCE 121R

PIE MS GRAND C 036

SHHM ANNABELLE 107J

SHHM ROBIN HOOD 117G

SHHM RED REBELLE 02E

Thick, powerful, and fault-free in his muscle pattern and phenotype. We think he's as good as it gets. His donor dam is an awesome female — feminine, moderate, perfect uddered, and dark cherry red. Her 209P daughter raised our heaviest calf in '06 weaning at 857 (AY: 1393). He's awesome too and sells in this sale. Dam's MPPA: 106. Herd bull here!

Selling 1/2 interest: terms sale day.

EPDs	
BW	2.9
WW	37
YW	65
M	19
TM	38
ST	9
Marb	.05
REA	.26
Fat	.00
BW	79
WW	777
YW	1311



HMV/R9N

3/26/03

100% 1A

890625

PERKS ADVANCER 9088

RBJR ADVANCE A709

HMV MS RAMBO 502

4L MS MAKE MY DAY R903

BJR MAKE MY DAY 402

4L MR RAMBO R709

We really like this bull and he has worked very hard for us. He's sired some great offspring — daughters will be calving in a few weeks.

Our partner, Harley Moser in South Dakota, has been in a severe drought the last year and has sold many of his cows so decided we would sell R9N while he is still young enough to impact another program.

Selling 1/2 interest with full possession. OHR and Sand Hills will each keep 1/4 semen interest. Dam's MPPA: 106

EPDs	
BW	4.8
WW	47
YW	82
M	19
TM	43
ST	11
Marb	.02
REA	.18
Fat	.00
BW	86
WW	810
YW	



Lot 38



Red Canyon 213

Purchase a Red Power bull and receive:

1. \$50 off if you take him home from the sale.
– Bring a neighbor and a trailer to multiply the savings!
2. Free delivery up to 300 miles.
– Further distances at cost to central delivery points.
3. Free wintering on bulls over \$2,500.
– We will keep the bulls at no cost until April 1.
4. More bull value for your dollar!
– Nowhere else will you find this many top end Red Angus bulls at affordable prices.

Lloyd Red Angus Lots 39 - 54

39

LLOYD BARON 01K-09S

ESL/09S

2/10/06

100% 1A

1119807

OHRR 23H RED BARON 79P

SSS RED CANYON 213

OHRR 4039 SUMMER 23H

DRL DIAMOND HANNA

OHRR 096 CUB CADET 30H

LCHMN COUNTESS H1005

Diamond Hanna is one of our top donor cows. Cub Cadet 23H has provided Olson's and Lloyd's with top of the herd mothers. Very smooth cattle. Dark red coat color. This bull calf has been the one to watch all summer.

Selling 1/2 interest and full possession. We want to use him on a few cows this spring.

EPDs	
BW	1.0
WW	28
YW	50
M	22
TM	36
ST	11
Marb	.12
REA	.14
Fat	-.01
BW	94
WW	659
YW	1370

40

LLOYD ADVANCER 05J-10S

ESL/10S

2/12/06

100% 1A

1119859

PERKS ADVANCER 9088

RBJR ADVANCE A709

VDAR RAMBO 323

LLOYD SUSAN SEROLA 05J

OHRR 118 CUB CADET

3128 MACS HONEY 15G

This bull had my eye all summer. These are really great numbers. We are retaining 1/2 interest and 1/2 possession. We plan to use him direct. Semen collection will be split between buyers and Lloyd. He has very good length, natural thickness and good feet.

EPDs	
BW	2.6
WW	43
YW	73
M	19
TM	41
ST	9
Marb	.01
REA	.08
Fat	-0.0
BW	92
WW	705
YW	1062

41

LLOYD MONU 46P-11S

ESL/11S

2/13/06

100% 1A

1119835

MONU VERMIL 310G-3

BIEBER VERMILLION 7975

BGD MONU MISS 310G

LLOYD MT HEAVIER 04

LMG GILLS HORIZON 1551

XXX MONTANA 961 MB

This 1st calf heifer has done a good job. He should be a really good worker. His granddam came from the Triple XXX ranch in Montana. I purchased her at the Nile auction. Stout cow. She is a deep ribbed cow with a 6.5 frame. The MT Heavier heifer appears to resemble her Montana dam.

EPDs	
BW	1.3
WW	42
YW	68
M	16
TM	37
ST	10
Marb	
REA	
Fat	
BW	81
WW	650
YW	1272

42

LLOYD ADVANCER 01K-08S

ESL/08S

2/6/06

100% 1A

1119844

PERKS ADVANCER 9088

RBJR ADVANCE A709

VDAR RAMBO 323

DRL DIAMOND HANNA 01K

OHRR 096 CUB CADET 30H

LCHMAN COUNTESS H1005

These dams, 01K and 05J, are our two best cows. We flushed both of them twice and retrieved 46 embryos. The cows look alike but have totally different sires and dams. This is a really good bull with length, muscle, and style.

Selling 1/2 interest and full possession.

EPDs	
BW	-.8
WW	38
YW	70
M	24
TM	43
ST	11
Marb	.02
REA	.04
Fat	-.01
BW	97
WW	609
YW	1077

43**LLOYD ADVANCER 05J-23S**

ESL/23S

2/28/06

100% 1A

1119848

PERKS ADVANCER 9088

RBJR ADVANCE A709

VDAR RAMBO 323

LLOYD SUSAN SEROLA 05J

OHRR 118 CUB CADET

3128 MACS HONEY 15G

Another very nice bull with Advancer x 05J. He expresses a lot of natural shape and easy feeding ability.

Selling 1/2 interest and full possession.

EPDs	
BW	2.6
WW	43
YW	73
M	19
TM	41
ST	9
Marb	.01
REA	.08
Fat	.00
BW	93
WW	637
YW	1031

44**LLOYD MONU 10P-01S**

ESL/01S

1/4/06

100% 1A

1119818

MONU VERMIL 310G-3

BIEBER VERMILLION 7975

BGD MONU MISS 310G

LLOYD RAM EMU-MAR 04 10P

BUF CRK ROMEO L081

OHRR 3128 MACS HONEY 15

A first calf heifer that really performed as expected. Lloyd Monu is a grandson of our famous cow, Macs Honey 15G, raised by Olsons, that I purchased in 1998. She has been a consistent donor for us. The 10P dam is a spitting image of her great mother.

EPDs	
BW	1.5
WW	37
YW	64
M	16
TM	34
ST	12
Marb	.06
REA	.01
Fat	.00
BW	80
WW	600
YW	1240

45**LLOYD M LEAGUE 06N-12S**

ESL/12S

2/13/06

100% 1A

1119813

LCC MAJOR LEAGUE A502M

BFCK CHEROKEE CNYN 4912

KRN REBA'S ROBIN

ESL KARIN ARROW 56F 06N

LLOYD 4X ARROW

OHRR MONARCH KARIN 56F

The dam, 06N, is a granddaughter of Monarch 56F. And everybody knows KRN Reba's Robin. Major League has been a most sought after sire the last four years. Cherokee Canyon continues to be used aggressively.

Selling 1/2 interest and full possession. These are good numbers.

EPDs	
BW	1.9
WW	38
YW	59
M	13
TM	32
ST	12
Marb	.08
REA	.13
Fat	.00
BW	88
WW	613
YW	1210



Major League - Sire of Lot 45

ESL/26S

3/3/06

100% 1A

1119817

OHRR 23H RED BARON 79P

SRR RED CANYON 213

OHRR 4039 SUMMER 23H

LLOYD HEVN FIREFLY 67.01 07L

LCHMN HEVN'S SAKE 1002F

LLOYD MONARCH FIREFLY

The genetics of this bull are super. The Red Baron 79P sire has grown into a super sire. His pedigree has Lchmn Grandcanyon and Forster Baron plus the OHRR Summer 23H dam. Couple that with the Monarch granddam, 56F, and Leachman Prilark. This bull calf was an eye catcher since birth. Very muscular and smooth.

Selling 1/2 interest and full possession.

EPDs	
BW	-.4
WW	35
YW	62
M	14
TM	31
ST	11
Marb	-.01
REA	16
Fat	.00
BW	74
WW	673
YW	1215

ESL/35S

3/14/06

100% 1A

1119825

BIEBER MIGHTY HAWK 9648

JHE CANYON HAWK 1062

BIEBER TINA 7375

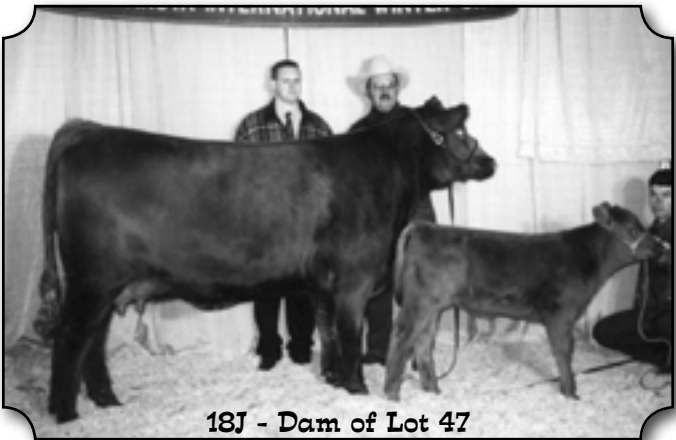
OHRR 9502 MACS LADY 18J

RBRTS MCINTOSH II 344

MESSMER OPHELIA 9502

Bieber Mighty Hawk is a good sized bull. Very thick and long. I have used him for three years now and he sells in this auction. The dam, Macs Lady 18J, was purchased from Olsons. We have flushed her and retrieved 13 embryos. A flush daughter sold for \$2,000 last year in this sale.

EPDs	
BW	1.2
WW	38
YW	65
M	16
TM	34
ST	11
Marb	-.01
REA	.26
Fat	-.01
BW	89
WW	673
YW	1338



18J - Dam of Lot 47

ESL/13S

2/13/06

100% 1A

1119836

PERKS ADVANCER 9088

RBJR ADVANCE A709

VDAR RAMBO 323

LLOYD SUSAN SEROLA 05J

OHRR 118 CUB CADET

3128 MACS HONEY 15G

Nice bull with a great set of numbers. Grandmother has produced many tremendous calves — both heifers and bulls. His suckling mother suffered some from a slight injury, but he caught up after weaning time.

Selling 1/2 interest and full possession.

EPDs	
BW	2.6
WW	43
YW	73
M	19
TM	41
ST	9
Marb	.01
REA	.08
Fat	-.01
BW	90
WW	551
YW	1334

ESL/17S

2/15/06

100% 1A

1119840

PERKS ADVANCER 9088

RBJR ADVANCE A709

VDAR RAMBO 323

LLOYD SUSAN SEROLA 05J

OHRR 118 CUB CADET

3128 MACS HONEY 15G

He filled out really nice. His dam produces a lot of milk. He has length, structure, and attractive muscle pattern. These numbers are as good as it gets.

Selling 1/2 interest and full possession.

EPDs	
BW	2.6
WW	43
YW	73
M	19
TM	41
ST	9
Marb	.01
REA	.08
Fat	-.01
BW	96
WW	671
YW	1412

ESL/42S

3/28/06

100% 1A

1119856

BIEBER MIGHTY HAWK 9648

JHE CANYON HAWK 1062

BIEBER TINA 7375

LCHMN ABIGAIL H1087

LCHMAN ABOVEHEAVEN 1018F

LMAN ABIGAIL B1091

This bull has grown well. His 88 lb. birth weight and 703 lb. wean weight is very good. Canyon Hawk is well known for his large Rib Eye Area. His grandmother was BJR Cherabelle 002. The dam's sire goes back to Leachman Heavenly 8141.

EPDs	
BW	1.8
WW	36
YW	67
M	18
TM	36
ST	13
Marb	-.03
REA	.12
Fat	-.02
BW	88
WW	703
YW	1061

ESL/49S

4/9/06

100% 1A

1119850

BIEBER MIGHTY HAWK 9648

JHE CANYON HAWK 1062

BIEBER TINA 7375

XXX MONTANA 961 MB

XXX HEAVY DANCE 782

XXX MONTANA 719

These are great numbers for this bull calf. The Montana cow has proven herself many times. The sire sells in this sale. He is long and muscular. Both dam and sire are good sized animals. Maternal grand sire, XXX Heavy Dance, was a very tauted bull as a yearling.

EPDs	
BW	1.5
WW	44
YW	73
M	19
TM	41
ST	11
Marb	.05
REA	.10
Fat	-.01
BW	89
WW	703
YW	1202

ESL/19S

2/23/06

100% 1A

1119867

PERKS ADVANCER 9088

RBJR ADVANCE A709

VDAR RAMBO 323

DRL DIAMOND HANNA 01K

OHRR 096 CUB CADET 23H

LCHMN COUNTESS H1005

Diamond Hanna 01K was flushed once to provide 16 embryos by 9088. She is my No. 2 cow in the herd at this time. Dark red coat color. This bull's numbers are really good. Deep ribbed and easy fleshing.

Selling 1/2 interest and full possession.

EPDs	
BW	-.8
WW	38
YW	70
M	24
TM	43
ST	11
Marb	.12
REA	.14
Fat	-.01
BW	92
WW	680
YW	1197

53**LLOYD ADVANCER 01K-20S**

ESL/20S

2/23/06

100% 1A

1119868

PERKS ADVANCER 9088

RBJR ADVANCE A709

VDAR RAMBO 323

DRL DIAMOND HANNA 01K

OHRR 096 CUB CADET 23H

LCHMN COUNTESS H1005

Diamond Hanna 01K was flushed once to provide 16 embryos by 9088. She is my No. 2 cow in the herd at this time. Dark red coat color. This bulls numbers are really good.

Selling 1/2 interest and full possession.

EPDs	
BW	-.8
WW	38
YW	70
M	24
TM	43
ST	11
Marb	.12
REA	.14
Fat	-.01
BW	95
WW	695
YW	1259

54**BIEBER MIGHTY HAWK 9648**

RAB/9648

3/17/03

100% 1A

905964

JHE CANYON HAWK 1062

BJR HAWK-EYE 104

BJR CHERABELL 002-121

BIEBER TINA 7375

BIEBER PROJECT RED 5827

BIEBER TINA 5079

We purchased this bull from the Columbus MT bull sale in 2004. He filled out as we had hoped. He is gentle and easy to work. He breeds cows quickly. We have had only one cow per year that was not bred.

Selling full possession, but we retain use of semen already collected so retain 1/3 interest.

EPDs	
BW	.1
WW	36
YW	68
M	19
TM	12
ST	37
Marb	.00
REA	.37
Fat	-.01
BW	80
WW	691
YW	

**Sale Day Phone**

Auction Block..... (701) 845-2555
 Edward Olson, cell (701) 238-3601
 Carl Olson, cell (701) 361-0684

Gerner Red Angus Lots 55 - 65

55

JLRA LANCER 04S

JLRA/0604

12/22/05

100% 1A

1101412

BECKTON LANCER F442 T

BECKTON LANCEER T A664

BKT SUFFEINA A828 DM

NSFR CHEROKEE BRANDY P10

BFCK CHEROKEE CNYN 4912

LMG BRANDY 22

This is a heifer bull from the calving ease sire Beckton Lancer. The dam is a first calf heifer from Cherokee Canyon.

EPDs	
BW	-.3
WW	31
YW	51
M	7
TM	23
ST	10
Marb	.16
REA	.35
Fat	-.02
BW	62
WW	710
YW	



Lancer - Sire of Lot 55

56

JLRA MR DYNAMIC 08S

JLRA/0608

12/28/05

100% 1A

1101392

LCC MAJOR LEAGUE A502M

BFCK CHEROKEE CNYN 4912

KRN REBA'S ROBIN

CBR DYANA 5703-284

CBR MR DYNAMIC 316-04

CBR STARLET 957-818

An AI son from a \$230,000 sire who is now very widely used in the breed. Major League is very consistent in transmitting carcass traits with thickness and muscling. This son brings you these traits. CBR Dyana keeps doing a great job in our herd.

EPDs	
BW	.9
WW	43
YW	69
M	13
TM	34
ST	9
Marb	.09
REA	.22
Fat	.00
BW	92
WW	675
YW	

57

JLRA SHOCO ADVANTAGE 09S

JLRA/0609

12/30/05

100% 1A

1101407

4L ADVANTAGE R9N

PERKS ADVANCER 9088

4L MS MAKE MY DAY R903

JLRA PRAIRIE ROSE

VGW RATTLER 908

SCTT ANGEL

Here is a top notch AI bull from 4L Advantage R9N who does everything right. Great phenotype, high quality semen. Dam goes back to Glacier Logan 210 cow family.

EPDs	
BW	-.2
WW	36
YW	65
M	16
TM	34
ST	12
Marb	.09
REA	.06
Fat	.00
BW	60
WW	724
YW	

58**JLRA ROB ADVANTAGE 10S**

JLRA/0610

1/1/06

100% 1A

1101394

4L ADVANTAGE R9N

PERKS ADVANCER 9088

4L MS MAKE MY DAY R903

JLRA LADY

JLRA DURANGO

BNDV KW'S MIMI

A big growth AI son of 4L Advantage R9N. A good balanced set of EPDs. The dam is a granddaughter of Leachman Robin Hood 1174B — loaded with maternal.

EPDs	
BW	3.6
WW	44
YW	76
M	19
TM	41
ST	12
Marb	.04
REA	.09
Fat	.00
BW	98
WW	766
YW	

59**JLRA DAKOTA MAJOR 11S**

JLRA/0611

1/1/06

100% 1A

1101393

LCC MAJOR LEAGUE A502M

BFCK CHEROKEE CNYN 4912

KRN REBA'S ROBIN

OHRR 13K-29K COPPER LASS 8M

OHRR DAKOTA COPPER 29K

OHRR 30H SUMMER 13K

Another dynamic Major League son whos dam OHR 13K-29K Copper Lass 8M delivers every time. A purchase made at the ND Red Select Sale from OHR Red Angus. Also, a heifer bull with very good EPDs.

EPDs	
BW	-.9
WW	35
YW	57
M	19
TM	36
ST	12
Marb	.19
REA	.28
Fat	.00
BW	84
WW	720
YW	

60**JLRA LOGAN ADVANTAGE 12S**

JLRA/0612

1/4/06

100% 1A

1101402

4L ADVANTAGE R9N

PERKS ADVANCER 9088

4L MS MAKE MY DAY R903

SCTT ANGEL

GLACIER LOGAN 210

SCTT RIKA

With a great set of EPD numbers, here is another son of 4L Advantage R9N. The dam is still holding a MN Great Northern Red Angus Sale record and continues to bring me great offspring.

EPDs	
BW	2.3
WW	37
YW	64
M	19
TM	38
ST	12
Marb	.16
REA	.06
Fat	.00
BW	90
WW	722
YW	

**Advantage - Sire of Lot 60**

61**JLRA TOP MAJOR 13S**

JLRA/0613

1/5/06

100% 1A

1101398

LCC MAJOR LEAGUE A502M

BFCK CHEROKEE CNYN 4912

KRN REBA'S ROBIN

BIEBER TOPPER 4205

BIEBER PERFECTION 3494

BIEBER TOPPER 2449

A heifer bull here — moderate birth weight out of a really maternal pedigree. Major League continues to top sales scross the country. The dam, Bieber Topper, doesn't know she is 16 years old. She keeps producing excellent calves.

EPDs	
BW	-.2
WW	28
YW	42
M	16
TM	30
ST	10
Marb	.06
REA	.21
Fat	.00
BW	88
WW	714
YW	

**Major League - Sire of Lot 61****62****JLRA FIELD DAY 15S**

JLRA/0615

1/8/06

100% 1A

1101405

LCC FIELD DAY A614N

BFCK CHEROKEE CNYN 4912

LCC PRINCESS LA099

BNDV KW'S MIMI

BIEBER KICKING WOLF6387

BIEBER MIMI 6170

Field Day presents genetics for cattle with style and super performance potential. The dam's pedigree speaks for itself. A good set of EPDs here also.

EPDs	
BW	-.1
WW	38
YW	64
M	19
TM	38
ST	12
Marb	.13
REA	.03
Fat	.00
BW	82
WW	695
YW	

63**JLRA LAKOTA RAMBO 16S**

JLRA/0616

1/11/06

100% 1A

1101395

CBR RAM 3109-936

BHR RAMBO 862B

CBR AUDREY 936-45

JLRA ROBIN SAKE 306

LCHMN HEVN'S SAKE 1002F

BIEBER DAPHNE 6067

Here is another son of CBR Ram 3109-936. The mother goes back to the great Leachman Heaven Sake, who was the top growth bull in the Red Angus breed.

EPDs	
BW	-.0
WW	29
YW	60
M	13
TM	28
ST	9
Marb	-.07
REA	-.05
Fat	.00
BW	78
WW	752
YW	

JLRA/0618

1/15/06

100% 1A

1101396

CBR RAM 3109-936

BHR RAMBO 862B

CBR AUDREY 936-45

TCG 792-311

OHRR 4039 SIR MACK 13J

EEA 792-4036

Here is a very dark red son from CBR Ram 3109-936, grandson of the great Rambo 502. The dam goes back to Roberts McIntosh II 344 and she produces very quiet and calm cattle.

EPDs	
BW	3.1
WW	33
YW	54
M	14
TM	30
ST	7
Marb	-.06
REA	-.10
Fat	.00
BW	88
WW	744
YW	

JLRA/0619

1/20/06

100% 1A

1101410

CBR RAM 3109-936

BHR RAMBO 862B

CBR AUDREY 936-45

JLRA CHERRY TOP

VGW RATTLER 908

BIEBER TOPPER 4205

A good solid muscular bull from CBR Ram 3109-936. This is one of our top bulls for our sale. Can you imagine, he is out of a first calf heifer? Take a good look!

EPDs	
BW	1.7
WW	29
YW	48
M	12
TM	26
ST	8
Marb	-.06
REA	-.11
Fat	-.01
BW	86
WW	806
YW	

~ Notes ~

Red Angus Heifers Lots 66 - 93

66

OHRR 75H CHOICE VANNA 13S

OHRR/13S

1/24/06

100% 1A

1130312

4L ADVANTAGE R9N

PERKS ADVANCER 9088

4L MS MAKE MY DAY R903

RED HOWE MS CHOICE 75H

RED TOWAW BOOM 73D

RED HOWE MS CHOICE DDH 96F

75H daughter was top selling female in '05 Red Power Sale to Lost Meadows Farm in Minnesota at \$3,750 — one daughter in our herd.

R9N is double marker for leptin gene and Genestar carcass evaluation. 13S will be a great cow!

EPDs	
BW	1.4
WW	34
YW	58
M	16
TM	33
ST	10
Marb	-.03
REA	.10
Fat	.00
BW	71
WW	597
YW	951

67

OHRR 2N COPPER VANTAGE 26S

OHRR/26S

1/30/06

100% 1A

1130255

4L ADVANTAGE R9N

PERKS ADVANCER 9088

4L MS MAKE MY DAY R903

OHRR 61J MS COPPER 2N

OHRR DAKOTA COPPER 29K

OHRR 1098 MOONBEAM 61J

Attractive, angular female with lots of maternal power and a great mom! (MPPA: 105) — a 29K daughter!

EPDs are strong and production numbers are good. Replacement heifer here.

EPDs	
BW	3.5
WW	42
YW	70
M	20
TM	41
ST	12
Marb	-.07
REA	-.10
Fat	.01
BW	75
WW	598
YW	921

68

OHRR 19H MACS VANNA 28S

OHRR/28S

1/30/06

98.1% 1B

1130271

4L ADVANTAGE R9N

PERKS ADVANCER 9088

4L MS MAKE MY DAY R903

OHRR MACS LELA 19H

RBRTS MCINTOSH II 344

LELAND RIMTOP 416-120B

Category 1B — 98.1%

Dam, 19H, is a beautiful cow with a great track record. Her offspring have sold and performed very well! Good carcass information.

EPDs	
BW	1.5
WW	33
YW	56
M	16
TM	33
ST	10
Marb	.03
REA	.21
Fat	.00
BW	72
WW	587
YW	917



Lot 68

69**OHRR 51P HI HO DIVA 44S**

OHRR/44S

2/6/06

100% 1A

1130298

OHRR 99L COPPER HI HO 108N

OHRR DAKOTA COPPER 29K

OHRR 096 HI HO LASS 99L

OHRR 112H DYNA DIVA 51P

LCC DIVIDE 1435K

RED HOWE MS KURUBA 112H

Wish we were keeping this girl — out of a first calf heifer and granddam, 112H, is a beautiful, angular, feminine cow.

Note EPDs and B to W spread. 108N is a bull we raised and is producing some very nice calves.

EPDs	
BW	-1.3
WW	29
YW	51
M	19
TM	34
ST	11
Marb	.01
REA	-.04
Fat	.00
BW	58
WW	625
YW	942

70**OHRR KRA CANYON SEMONE 55S**

OHRR/55S

2/9/06

100% 1A

1130297

SRR RED CANYON 213

LCHMN GRANDCANYON 1244G

BLUE RIDGE KIMA 950

OHRR 105H SEMONE 50M

OHRR 524 DURANGO 105H

SEXTON'S SEMONE 9930

Extra muscle, capacity, and scale in this girl out of carcass sire Red Canyon. We expect her to have good actual numbers.

Dam produces nearly 60% of her body weight each year. Great numbers here!

EPDs	
BW	2.8
WW	40
YW	72
M	17
TM	37
ST	13
Marb	.07
REA	.05
Fat	.01
BW	79
WW	628
YW	982

**Lot 70****71****OHRR 31J MAC DIVIDE 85S**

OHRR/85S

2/28/06

100% 1A

1130281

LCC DIVIDE 1435K

GLACIER DIVIDE 310

CJ'S HOBO MABLE

OHRR 503 MAC SHAREE 31J

RBRTS MCINTOSH II 344

BADLANDS SHAREE 503

Big weaning weight here — starting at 65 lbs. Nice balanced numbers — 31J has three full sisters in our herd — all good ones.

EPDs	
BW	-1.1
WW	28
YW	48
M	18
TM	31
ST	8
Marb	-.01
REA	.00
Fat	.00
BW	65
WW	662
YW	973

72**OHRR L32N ADV HONEY 80S**

OHRR/80S

2/27/06

100% 1A

1130283

4L ADVANTAGE R9N

PERKS ADVANCER 9088

4L MS MAKE MY DAY R903

ESL MONU HONEY 503

BJR MONU 4X-303

OHRR 3128 MACS HONEY 15

Show potential here. Granddam, Honey 15G, was a show girl turned great donor cow. This girl has it all. We think she'd be a great junior heifer! Dam's MPPA: 103.

EPDs	
BW	2.3
WW	45
YW	78
M	16
TM	39
ST	12
Marb	-.03
REA	.12
Fat	-.02
BW	71
WW	659
YW	1059

**Lot 72****73****OHRR 38P-83N RED FLAME 84S**

OHRR/84S

2/28/06

100% 1A

1130290

OHRR 83L MR JACKPOT 83N

OHRR 388 JACKPOT 67L

OHRR 182H FAYET 83L

OHRR 38H RED FLAME 38P

SRR RED CANYON 213

RED HOWE MS FLAME 38H

How about 71 lbs. to 673 on the first calf — we think it's more than we could ask.

Granddam, 38H, raised our top female in the '04 sale going to Jack Lindstrom in Kansas.

EPDs	
BW	1.7
WW	35
YW	59
M	18
TM	36
ST	11
Marb	-.03
REA	-.12
Fat	.00
BW	71
WW	673
YW	1009

**Lot 73**

74**OHRR 4K RED CANDY 87S**

OHRR/87S

3/1/06

100% 1A

1130257

SRR RED CANYON 213

LCHMN GRANDCANYON 1244G

BLUE RIDGE KIMA 950

OHRR 50H ULTRA CUB 4K

OHRR 096 CUB CADET 30H

OHRR 41E MS ULTRA 50H

Candy 87S is a full sib to '06 Red Power second top selling bull at \$7,000 to Gregg Ranches in South Dakota. Dam's MPPA: 104.

Ed lost some points with lower management for taking this girl out of the replacement pen! Congrats to her new owner!

EPDs	
BW	.5
WW	33
YW	59
M	21
TM	37
ST	12
Marb	.18
REA	.12
Fat	-.01
BW	70
WW	611
YW	947

**Lot 74****75****OHRR 171P BOBBI FAYET 93S**

OHRR/93S

3/5/06

100% 1A

1130327

OHRR 83L MR JACKPOT 83N

OHRR 388 JACKPOT 67L

OHRR 182H FAYET 83L

MESSMER BOBBI 171P

FCC YANKEE 114

MESSMER BOBBI 2046

Dam was top selling female at Messmer's '05 sale — Jackpot 83N is a calving ease bull with outstanding maternal power!

EPDs and performance are solid and balanced.

EPDs	
BW	-1.1
WW	27
YW	50
M	20
TM	33
ST	10
Marb	.06
REA	-.25
Fat	.00
BW	68
WW	597
YW	908

76**OHRR 13K SUMMER DIVA 105S**

OHRR/105S

3/27/06

100% 1A

1130266

LCC DIVIDE 1435K

GLACIER DIVIDE 310

CJ'S HOBO MABLE

OHRR 30H SUMMER 13K

OHRR 096 CUB CADET 30H

OHRR 4039 SUMMER 23H

A young female out of our very productive 13K. Two other daughters in herd and one at Gerner's in Minnesota.

We think there is great potential in 105S! Dam's MPPA: 104.

EPDs	
BW	2.3
WW	32
YW	55
M	20
TM	35
ST	8
Marb	.11
REA	.06
Fat	-.01
BW	83
WW	644
YW	968

77**OHRR 104M DIVA CASEY 113S**

OHRR/113S

5/8/06

100% 1A

1130325

LCC DIVIDE 1435K

GLACIER DIVIDE 310

CJ'S HOBO MABLE

OHRR 1098 MS CASEY 104M

LCHMN RAMPAGE 1098E

MS CASEY 118

Very young female but she is a granddaughter of our Casey 118 donor cow that gave us so many great cattle. Divide pedigree has some power females also. Dam's MPPA: 102.

EPDs	
BW	.7
WW	26
YW	45
M	17
TM	30
ST	7
Marb	.01
REA	-.20
Fat	.00
BW	70
WW	637
YW	930

**Divide - Sire of Lot 77****78****LLOYD SUPER 02L-04S**

ESL/04S

1/31/06

100% 1A

1119806

4L SUPER VISION R2292

GLACIER CHATEAU 744

4L MR RAMBO R709

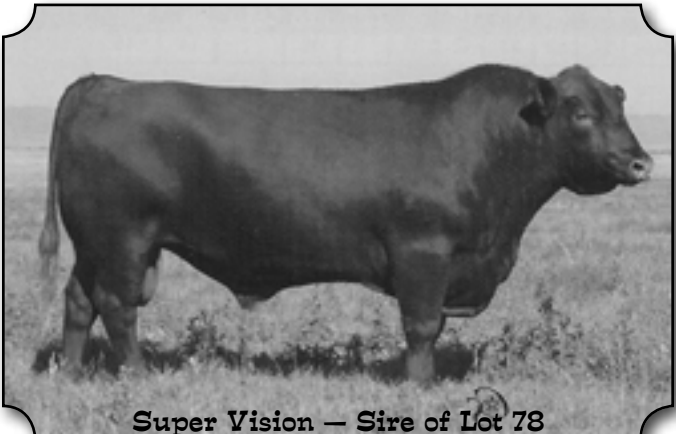
SCHR MISS TESS CHIEF 02L

PBC D0202 6M H3554

SCHR TESS 5144 17J

This is a powerful heifer. You will note her depth and spread of rib. She carries herself proudly. She has King Rob and PBC D0202 6M H3554 in her pedigree.

EPDs	
BW	2.6
WW	35
YW	64
M	15
TM	33
ST	11
Marb	.06
REA	-.02
Fat	.01
BW	86
WW	564
YW	

**Super Vision - Sire of Lot 78**

ESL/43S

3/29/06

100% 1A

1119819

BIEBER MIGHTY HAWK 9648

JHE CANYON HAWK 1062

BIEBER TINA 7375

LLOYD MONARCH FIREFLY 11J

RBRTS MCINTOSH II 344

OHRR MONARCH KARIN 56F

The grandmother is the historic 56F Monarch cow. The 11J cow has produced several powerful bulls. This heifer is a peach. Note her size and then her birth date. 11J has a 102 MPPA.

EPDs	
BW	3.8
WW	46
YW	74
M	14
TM	38
ST	10
Marb	-.07
REA	.09
Fat	.00
BW	89
WW	660
YW	

ESL/34S

3/14/06

100% 1A

1119826

BIEBER MIGHTY HAWK 9648

JHE CANYON HAWK 1062

BIEBER TINA 7375

LLOYD VICTORIA MOON 66-01 19L

BIEBER RED MOON 6042

LCHMAN VICTORIA HI 141

This is a first calf heifer. Her dam, Victoria Moon 19L, is as good as they come. Her heritage goes back to Robin Hood, Glacier Marias, and BJR Hawk-eye. Note the excellent numbers. 34S has Marb and REA in top 45% and 2% respectively.

EPDs	
BW	3.7
WW	41
YW	72
M	19
TM	40
ST	
Marb	.02
REA	.22
Fat	.00
BW	88
WW	602
YW	

ESL/38S

3/17/06

100% 1A

1119834

BIEBER MIGHTY HAWK 9648

JHE CANYON HAWK 1062

BIEBER TINA 7375

LLOYD ARVA CHABEN 26-01 44L

OHRR 096 CUB CADET 30H

RRM-594-6042

We really like the granddam of 38S. She raises strong legged, stylish calves. The dam of 38S is out of Cub Cadet 30H. Olsons and Lloyds retained cows out of him and are at the top of their herds. 38S has Marb and REA in top 45% and 2% respectively.

EPDs	
BW	1.3
WW	37
YW	68
M	21
TM	39
ST	
Marb	.03
REA	.19
Fat	.00
BW	84
WW	595
YW	

ESL/40S

3/26/06

100% 1A

1119861

BIEBER MIGHTY HAWK 9648

JHE CANYON HAWK 1062

BIEBER TINA 7375

LCHMN DUCHESS H1139

GLACIER MARIAS 548

LMAN DUCHESS 9286

This heifer has really good numbers. Her numbers are adequate to produce really good offspring. With Lechman Monu 2X, Heaven or Bust, Glacier Marias, and Project Red she should perform well. Her Marb and REA are in the top 15% and 2% respectfully.

EPDs	
BW	-.6
WW	30
YW	57
M	18
TM	33
ST	
Marb	.13
REA	.22
Fat	-.01
BW	74
WW	544
YW	

83**LLOYD SAKE 34G-18S**

ESL/18S

2/17/06

100% 1A

1119830

LCHMN HEVN'S SAKE 100F

LAKOTAS HEAVENLY 305

LEACHMAN PRILARK

BGD MISS MONU 34G

CFRA MONU 9060

BGS MISS HOBO 31E

This heifer goes back to Leachman Prilark, Buf Crk Hobo 1961, and Leachman EBV 3531, three of the original stalwarts in Red Angus. She is packed with good genetics!

EPDs	
BW	1.6
WW	35
YW	68
M	13
TM	30
ST	
Marb	-.09
REA	.03
Fat	.00
BW	84
WW	528
YW	

84**LLOYD MONU 41P 02S**

ESL/02S

1/8/06

100% 1A

1119833

MONU VERMIL 310G-3

BIEBER VERMILLION 7975

BGD MONU MISS 310G

LLOYD FAIR COYOTE 04 41P

LMG GILLS HORIZON 1551

LLOYD FAIRLEEN 74-01 06L

The Fairleen granddam has been a flush dam for us. This first calf heifer is one of the prettiest and feminine heifers we raised. She also carries really good fleshing.

EPDs	
BW	-.3
WW	34
YW	59
M	15
TM	32
ST	10
Marb	-.03
REA	-.2
Fat	.01
BW	70
WW	575
YW	

85**LLOYD MONU 15P-15S**

ESL/15S

2/14/06

100% 1A

1119824

MONU VERMIL 312G

BIEBER VERMILLION 7975

BGD MONU MISS 310G

LLOYD LADY MCRAM 04 15P

FORSTER BLAZE 6129

LLOYD LADY OPHELIA 75-01L

This heifer was from a first calf heifer. She has a 75 lb. birth wt. and a 560 lb. wean wt. Her grandmother is a really nice cow. We have sold several bulls from her in the Red Power Sale. Her grandmother is the Macs Lady 18J of OHRR.

EPDs	
BW	.6
WW	35
YW	62
M	16
TM	34
ST	9
Marb	-.02
REA	-.10
Fat	.00
BW	75
WW	560
YW	

86**JLRA RACHEL YUMA 01S**

JLRA/0601

12/15/05

100% 1A

1101403

CBR RAM 3109-936

BHR RAMBO 862B

CBR AUDREY 936-45

JLRA RACHEL

LMAN KING ROB 8621

BIEBER DAPHNE 5550

Here is a very classy, naturally fleshing heifer whose mother goes back to King Rob. This heifer will bring a lot of performance to any herd.

EPDs	
BW	2.5
WW	27
YW	52
M	16
TM	30
ST	10
Marb	-.10
REA	-.07
Fat	.00
BW	98
WW	630
YW	

87**JLRA ANGEL STAR 02S**

JLRA/0602

12/18/05

100% 1A

1101411

LODI PRINCE 2632

CALIFORNIA SUPREME 2087

JIL 2560

JLRA STARR

JLRA DURANGO

JLRA DYANA

An AI daughter from a fresh pedigree in the Red Angus breed. Lodi Prince brings a double marker gene for marbling and tenderness. A moderate frame heifer.

EPDs	
BW	1.8
WW	31
YW	59
M	13
TM	29
ST	10
Marb	-.05
REA	.02
Fat	.00
BW	90
WW	620
YW	

88**JLRA LANA 03S**

JLRA/0603

12/21/05

100% 1A

1101400

LCC GRAND SLAM 1726J

LCHMN GRANDCANYON 1244G

CJ'S HOBO SHEILA

BIEBER HOLLY 7078

BIEBER FRAZER 5884

BIEBER HOLLY 5463

This heifer is an AI daughter of Grand Slam, one of the most powerful growth bulls in the breed. Replacement female here!

EPDs	
BW	2.8
WW	35
YW	55
M	15
TM	32
ST	12
Marb	.14
REA	-.09
Fat	.00
BW	85
WW	557
YW	

89**JLRA PRIMROSE 05S**

JLRA/0605

12/24/05

100% 1A

1101404

LCC GRAND SLAM 1726J

LCHMN GRANDCANYON 1244G

CJ'S HOBO SHEILA

JLRA BROOKE

SCHAUER CONAGHER 9704

BIEBER DAPHNE 6067

Another AI Grand Slam heifer with a more moderate frame. Her dam has an awesome udder, heavy milker and is a very calm cow. Take notice of the EPDs, especially TM.

EPDs	
BW	4.1
WW	45
YW	73
M	18
TM	41
ST	12
Marb	.18
REA	.01
Fat	.00
BW	96
WW	646
YW	

90**JLRA ABIGALE 06S**

JLRA/0606

12/24/05

100% 1A

1101409

BECKTON LANCER F442T

BECKTON LANCER T A664

BKT SUFFEINA A828 DM

JLRA DAPHNE RED

MESSMER RED OPTION 9902

BIEBER DAPHNE 6067

An AI heifer from Beckton Lancer — a tremendous calving ease sire with exceptional carcass traits. This heifer gives you some great genetics in the pedigree.

EPDs	
BW	1.1
WW	36
YW	61
M	8
TM	26
ST	10
Marb	.19
REA	.23
Fat	-.02
BW	86
WW	687
YW	

91**JLRA TASHA 14S**

JLRA/0614

1/7/06

100% 1A

1101413

LCC FIELD DAY A614N

BFCK CHEROKEE CNYN 4912

LCC PRINCESS LA099

JLRA HIGH CLASS

HOLDEN HI-C 8128

JLRA CLASSIC 216

A good replacement AI daughter from a first calf heifer. She has great EPDs. Field Day is near perfect in his structure and combines Canyon and Make My Day.

EPDs	
BW	1.1
WW	46
YW	77
M	19
TM	41
ST	12
Marb	.13
REA	.05
Fat	.00
BW	72
WW	635
YW	

92**JLRA DYNETTE 17S**

JLRA/0617

1/11/06

100% 1A

1101397

CBR RAM 3109-936

BHR RAMBO 862B

CBR AUDREY 936-45

JLRA DYANA

LTD H279-1514 DYN

CBR DYANA 5703-284

This sweet little heifer is packed with performance on both sides. The mother, a smaller framed cow, continually gives me number one calves.

EPDs	
BW	1.0
WW	28
YW	51
M	15
TM	29
ST	7
Marb	-.06
REA	-.13
Fat	.00
BW	74
WW	635
YW	

93**JLRA SAMANTHA 20S**

JLRA/0620

1/31/06

100% 1A

1101416

CBR RAM 3109-936

BHR RAMBO 862B

CBR AUDREY 936-34

LMG SARA 1079

BJR MONU 4X-303

LMG SARA 328-817

A CBR Ram 3109 daughter out of the Gill Sara cow family. This combination brings lots of maternal and growth. A very good heifer for any herd.

EPDs	
BW	1.4
WW	31
YW	57
M	16
TM	32
ST	10
Marb	-.06
REA	-.05
Fat	.00
BW	82
WW	644
YW	

Red Angus Replacements**for Professional Cattlemen****Pro-Cow**

**Ask a Red Angus breeder
about Pro-Cow**

Olson Hereford Ranch Lots 94 - 108

94

OHR HARD RIGHT 10M 31R

31R/OHR

1/30/05

P42584650

RJH MOMENTUM H45

3D NO LIMIT 09E

JR Y168 GLORIA C104

OHR MATTIE 91F 10M

VCR EAST KODIAK 506E

TA-BAR-E-L-740C REBA 91F

Sale Feature! High performance and fully pigmented with good muscle and bone structure — 31R was used on select cows in our herd last spring. Dam is an excellent young cow whose first calf topped our 2005 bull sale. Her 2006 calf also sells in this years sale. She has a BW ratio of 97.3% and a WWR of 116 in our herd. In the top 1% of WW, YW, M&G, Scrotal, REA, and CHB. In top 15% for Milk, CEM, BMI, and BII. Terms available sale day!

EPDs	
BW	3.0
WW	67
YW	106
M	22
M&G	55
SC	1.6
Fat	.005
REA	.59
IMF	-.12
BW	93
WW	802
YW	1356

95

OHR RIGHT NOW 896H 92R

92R/OHR

3/11/05

P42584719

RJH MOMENTUM H45

3D NO LIMIT 09E

JR Y168 GLORIA C104

SADDLE-VALLEY 7C MEG 896H

KLNDIKE 500Z FEDRTION 7C

SVR 777Y MS RUSHMORE 344F

Attractive, smooth fronted bull that has good length. Dam is a high volume, good uddered cow with a 102 WWR in our herd. \$ Indexes = BMI 24; CEZ=18; BII=22; CHB=21. In top 10% of breed for BW, WW, CEM, Scrotal, BMI, CEZ, BII and top 30% for CED, YW, and M&G. This guy could be used on heifers as well as cows.

EPDs	
BW	.4
WW	51
YW	78
M	15
M&G	41
SC	1.4
Fat	.005
REA	.19
IMF	-.04
BW	94
WW	684
YW	1104

96

OHR RIGHT TURN 64L 78R

78R/OHR

2/23/05

P42584696

RJH MOMENTUM H45

3D NO LIMIT 09E

JR Y168 GLORIA C104

HAROLDSON'S 45H CHRISTINA 64L

LLL NUFF SAID 45H

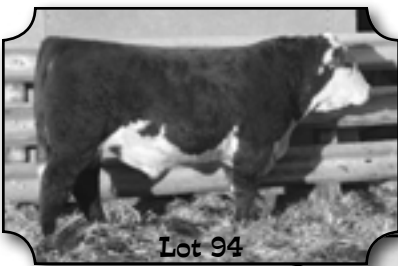
WALPOLE LUCKY LADY 2E

Recommended for use on heifers! A short marked, smooth made bull that we used on our heifers last spring. Dam is a moderate framed, super uddered young cow with a 109.7 WWR on 3 calves, and a birth weight ratio of only 93%. In 2005 her heifer calf sold for \$9,000. He is in the top 20% or better for BW, WW, Milk, M&G, CEM, Scrotal, Fat, BMI Index and BII Index.

EPDs	
BW	.6
WW	48
YW	65
M	22
M&G	46
SC	1.2
Fat	-.004
REA	.08
IMF	-.07
BW	80
WW	694
YW	991



Momentum - Sire of Lots 94, 95, 96



Lot 94



10M - Dam of Lot 94



Lot 95



896H - Dam of Lot 95



64L - Dam of Lot 96



Sale Day Phone

Auction Block.....(701) 845-2555
 Edward Olson, cell(701) 238-3601
 Carl Olson, cell(701) 361-0684

82R

3/20/05

P42610075

NS KNEO 005

JSF 37 271 DEVO 23C

GK APOLLONIA 834Z

AA GOVERNESS 262

REMITALL GOVERNOR 236G

TSF WRANGERETTE 811

A moderate framed, conservatively marked, deep bodied bull we brought into our herd last spring to breed some heifers. He should produce some good females with Keno, Governor, and 19D stacked in this pedigree. Dam has a 102.3 WWR on 3 calves. He ranks in the top 30% or better for WW, YW, M&G, CEM, Scrotal, Fat, and CHB Index — and is a breed improver for 13 of 15 traits.

EPDs	
BW	4.1
WW	46
YW	81
M	18
M&G	41
SC	.8
Fat	-.009
REA	.19
IMF	-.05
BW	102
WW	674
YW	1209

100R/OHR

3/23/05

P42586156

GENETIC BLITZ 434V 0901

BAR JZ TRADITION 434V

THM LASSIE DOMINO 6008

CEO CHEYENNE 100H

MOHICAN QUEST 26C

HUSO 114 GEM D467

Heifer bull with good length, extra pigment and correct, smooth structure. Sires 434V and Quest left super daughters and 6008 and D467 were top donors. Dam was shown successfully many times and maintained a 102 WWR on 4 calves in our herd.

EPDs	
BW	3.1
WW	30
YW	52
M	21
M&G	36
SC	-.2
Fat	.008
REA	.13
IMF	.01
BW	89
WW	530
YW	1013

72R/OHR

2/21/05

P42584716

RANGELINE 19H CANYON 14M

FHF 8403 STARBUCK 19H

SVPH AMELIA 648G

JAK 218Y RARITY 406E

CIRCLE-D MCGYVER 218Y

CIRCLE-D EVNING RYDE 951X

A long bodied, performance bull with good muscle from our carcass sire, Canyon, and a very productive Wrangler granddaughter (105.8 WWR on 8 calves). 951X was Canadian National Champion with calf at side. Canyon had a 17.2 REA and was double marker for marbling gene. In top 10% of breed for WW, YW, Fat and CHB Index. Also in the top 30% or better for REA, IMF and Scrotal.

EPDs	
BW	6.9
WW	57
YW	88
M	11
M&G	39
SC	.7
Fat	-.009
REA	.30
IMF	.03
BW	104
WW	671
YW	1152



Canyon – Sire of Lot 99

66P/OHR

2/14/04

P42480914

VCR EAST KODIAK 506E

WTK 55Y BOND 75A

VCR MIS FLO JO 849X

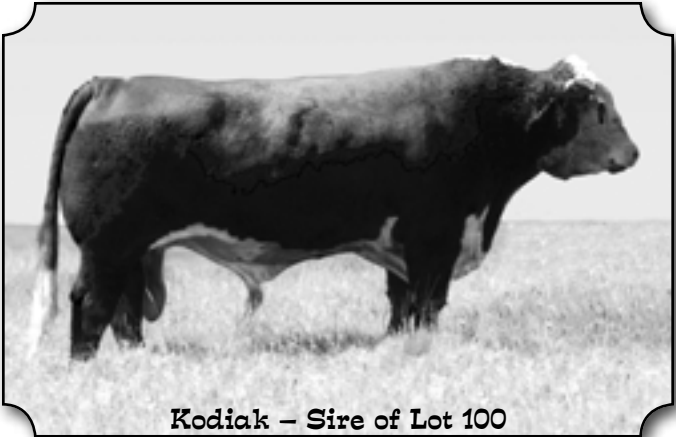
SADDLE-VALLEY 7C MEG 896H

KLNDIKE 500Z FEDRTION 7C

SVR 777Y MS RUSHMORE 344F

Big, long bodied, high performance three-year-old used as a clean-up bull last summer in our herd. As a son of multi-trait leader, Kodiak, he should leave some super uddered females. Dam has a top udder and 102 WWR ratio. In the top 30% or better for WW, Scrotal, REA, IMF, BMI, and BII. Should cover lots of cows!

EPDs	
BW	4.6
WW	46
YW	72
M	8
M&G	30
SC	1.2
Fat	.03
REA	.24
IMF	.09
BW	90
WW	651
YW	1098



Kodiak – Sire of Lot 100

219R

9/26/05

P42640819

PW MOHICAN NASDAQ P316

REMITALL BOOMER 46B

PW VICTORIA 964 8114

MW SUNNY 415E 1ET

REMITALL BOOMER 46B

MW SUNNY M11Z ET

A very complete fall bull with good muscle and a very productive mother — she is a Dam of Distinction with a 106.6% ratio on 8 calves and excellent udder structure. 219R is double bred to 46B who has more daughters in production than any other sire in the breed. 219R is also in the top 2% of the breed for REA and should make excellent daughters.

EPDs	
BW	5.4
WW	41
YW	71
M	21
M&G	41
SC	.6
Fat	.004
REA	.52
IMF	-.02
BW	86
WW	618
YW	1084



Lot 101

102**OHR EXCELLERATOR 8E 21S**

21S/OHR

1/28/06

42699374

RJH MOMENTUM H45

3D NO LIMIT 09E

JR Y168 GLORIA C104

CEO VICTORIA 8E

TA-BAR ONE TIME 076C

CEO MS VJ BAN 7P

Big, high performance, heavy muscled, stout yearling bull from our carcass sire, Momentum. Mother is a Dam of Distinction with a 95% BW ratio and a 106.5 WWR in our herd and is now still in our herd at 12 years of age. In the top 20% or better for WW, YW, Milk, M&G, CEM, Scrotal, REA, and CHB Index. Horned. Help yourself to muscle and performance!

EPDs	
BW	2.6
WW	54
YW	81
M	20
M&G	47
SC	.8
Fat	-.003
REA	.33
IMF	-.07
BW	104
WW	834
YW	1333

103**OHR MATRIX G10 46S ET**

46S/OHR

2/9/06

P42697478

BR MOLER ET

REMITALL ONLINE 122L

DM L1 DOMINETTE 820

SHF LADY 512 G10 ET

MM RSM STOCKMASTER 512

SHF MS JUSTN 7115J Z24

A long, well muscled, correct bull from our great donor cow, G10, and Reserve National Champion, Moler. He is attractive with good performance and dark red color. This embryo bull is in the top 10% for WW, YW, CEM and REA, and top 20% for Milk, M&G, Scrotal, and CHB. Dam was shown with great success and grandmother, Z24, is a Dam of Distinction. Scurred.

EPDs	
BW	3.6
WW	51
YW	85
M	20
M&G	45
SC	.8
Fat	.005
REA	.36
IMF	-.02
BW	80
WW	740
YW	1179

104**OHR MOMENTUM 88G 62S**

62S/OHR

2/13/06

P42699378

RJH MOMENTUM H45

3D NO LIMIT 09E

JR Y168 GLORIA C104

SALUNGA GEORGIE GIRL

WILL-VIA HEADLINE S133

CSSBRN RSHNG DL 306R 21C

Moderate, heavy muscled, correct, short marked son of our carcass sire, Momentum. Dam is a great uddered cow with a 102.6 WWR on 5 calves and an own daughter of the great female producer, Headline. In the top 20% or better for CED, BW, WW, Milk, M&G, CEM, Scrotal, BMI, and CEZ. Should be excellent to use on heifers!

EPDs	
BW	-.2
WW	47
YW	69
M	20
M&G	43
SC	.9
Fat	.009
REA	.18
IMF	-.06
BW	84
WW	622
YW	1109

105**OHR TURBO 50E 53S**

53S/OHR

2/10/06

P42699377

RJH MOMENTUM H45

3D NO LIMIT 09E

JR Y168 GLORIA C104

ANL P183 BARBARA 21B 50E

JR NICK THE BUTLER P183

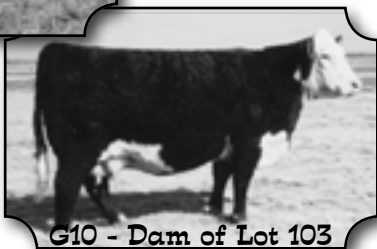
ANL R271 18S BARBARA 21B

Another good son of Momentum with length, pigment and muscle. Dam is 12-years-old with great udder and an earned WWR of 103.6 and a 99 BW ratio. Momentum has ratioed 93.3 at birth, 107.7 at weaning and 12 daughters in production have a 106.2 WWR. Turbo is in the top 30% or better for BW, WW, YW, Scrotal, Fat, and REA.

EPDs	
BW	2.0
WW	49
YW	76
M	15
M&G	39
SC	.8
Fat	-.009
REA	.24
IMF	-.11
BW	89
WW	697
YW	1154



Lot 103



G10 - Dam of Lot 103



Lot 104



88G - Dam of Lot 104



Lot 105



50E - Dam of Lot 105

Spring 2007 Hereford Average EPDs

<u>BW</u>	<u>WW</u>	<u>YW</u>	<u>M</u>	<u>M&G</u>	<u>SC</u>	<u>Fat</u>	<u>REA</u>	<u>IMF</u>
3.7	41	68	16	36	.06	.003	.14	.00

BW = Birth Weight
 WW = Weaning Weight
 YW = Yearling Weight

M = Maternal Milk
 M&G = Milk plus Growth
 SC = Scrotal Circumference

Fat = Back Fat Thickness
 REA = Rib Eye Area
 IMF = Intramuscular Fat %

Averages for profit indexes: BMI=14.90; CEZ=13.99; BII=14.11; CHB=17.38

106**OHR GOVERNOR 10M 83S**

83S/OHR

2/28/06

P42697481

REMITALL GOVERNOR 236G

REMITALL CASINO 12C

REMITALL ZERMARVEL 111Z

OHR MATTIE 91F 10M

VCR EAST KODIAK 506E

TA-BAR-E-L-740C REBA 91F

A very complete, well muscled, deep bodied son of breed legend Governor. His mother is our great 10M cow — mother of Hard Right and the top seller in our 2005 sale. She has a BW ratio of 97.3 on 3 calves and a 116 WWR. Should make some great females. In the top 10% of the breed for Milk, M&G, Scrotal, and REA and top 30% or better for WW, YW, BMI, BII, and CHB.

EPDs	
BW	4.0
WW	46
YW	81
M	23
M&G	47
SC	1.1
Fat	.001
REA	.37
IMF	.01
BW	82
WW	734
YW	1203



Lot 106

107**OHR MONU-MINT 116G 94S**

94S/OHR

3/6/06

P42697482

MOHICAN MINT 19M

FELTONS ENDURANCE 745

MOHICAN LISA M24E

MOHICAN VINDI 116G

MOHICAN DAYTA 1ET

MOHICAN VINDI M78C

Well balanced Mint son with extra rib, pigment, and a complete structure. Mother is a Dam of Distinction with a 106.3 WW production ratio. Twin. Top 5% of breed for CEM, REA, and BMI. Top 15% for WW, Scrotal, IMF, BII, and CHB.

EPDs	
BW	4.3
WW	49
YW	81
M	13
M&G	38
SC	.9
Fat	.023
REA	.47
IMF	.09
BW	70
WW	720
YW	1153

108**OHR MOLER 68G 51S**

51S/OHR

2/9/06

P42697479

BR MOLER ET

REMITALL ONLINE 122L

DM L1 DOMINETTE 820

STAR T BONITA A6 68G

WTK 55Y BOND 75A

WILL-VIA MISS VICTORIA A6

A moderate, complete, short marked, well muscled son of the National Champion, Moler. Dam is a high volume, steady producer with a very nice udder. She was calf champion at the Royal in Kansas City as a show heifer in 1997. 51S was a twin and has been dehorned. He has an excellent pedigree loaded with lots of donors and champions.

EPDs	
BW	4.9
WW	48
YW	81
M	18
M&G	41
SC	.7
Fat	-.01
REA	38
IMF	-.15
BW	82
WW	606
YW	1076

OHR Heifers Lots 109 - 114

109

OHR GLORIA 64L 63S

63S/OHR

2/13/06

P42699384

RJH MOMENTUM H45

3D NO LIMIT 09E

JR Y168 GLORIA C104

HAROLDSON'S 45H CHRISTINA 64L

LLL NUFF SAID 45H

WALPOLE LUCKY LADY 2E

An excellent Momentum daughter from one of our top young cows who has a 93 BW ratio on 4 calves and WW production ratio of 109.7%. 63S has the size, correctness, and style to do it in the show ring also. Top 25% for BW, WW, Milk, M&G, CEM, Scrotal, Fat, REA, BMI, and CHB. Great EPDs, great pedigree, great heifer!

EPDs	
BW	1.4
WW	52
YW	75
M	22
M&G	48
SC	1.0
Fat	-.004
REA	.26
IMF	-.11
BW	79
WW	653
YW	931



Lot 108

110

OHR SCARLETT 68N 90S

90S/OHR

3/3/06

P42697466

BR MOLER ET

REMITALL ONLINE 122L

DM L1 DOMINETTE 820

OHR SCARLETT 68N ET

VCR EAST KODIAK 506E

TALK SCARLETT 338U

Moderate, complete, well balanced daughter of the popular "Moler" bull. Dam is a great uddered Kodiak daughter with a 99 BW ratio and 114 WW ratio in our herd. Top 20% or better for WW, YW, Milk, M&G, CEM, Scrotal, REA, and CHB. Show potential with a great pedigree!

EPDs	
BW	3.4
WW	52
YW	83
M	20
M&G	46
SC	.9
Fat	.007
REA	.40
IMF	-.02
BW	78
WW	587
YW	899



Lot 109



111**OHR LADY TRADITION 50P 23S**

23S/OHR

1/29/06

P42697463

OHR MGM TRADITION 687

S&S TRADITION 24D

MGM MISS BOND SAID 653

OHR NIKITA 69F 50P

VCR EAST KODIAK 506E

OHR QUESTIVA 69F

A correct, feminine Tradition daughter with extra pigment and nice rib shape. Dam is a first calf heifer by the great Kodiak bull and a Dam of Distinction Quest daughter. Potential show prospect also.

EPDs	
BW	4.9
WW	39
YW	67
M	16
M&G	35
SC	.6
Fat	.001
REA	.23
IMF	-.09
BW	78
WW	613
YW	902

**Lot 110****112****OHR LADY TRADITION 3106 79S**

79S/OHR

2/24/06

P42699387

OHR MGM TRADITION 687

S&S TRADITION 24D

MGM MISS BOND SAID 653

WALKER PRM MISS H101 B168 3106

WILL-VIA CCC MAX

SHR VIC MAID BLAZER B168

Complete, long bodied, conservatively marked heifer with many great females in the pedigree. Grandmother and great grandmother are Dams of Distinction. Should make an excellent replacement female!

EPDs	
BW	3.2
WW	34
YW	59
M	19
M&G	36
SC	.3
Fat	.001
REA	.09
IMF	-.07
BW	74
WW	626
YW	921

113**OHR GLORIA 35L 17S**

17S/OHR

1/27/06

P42699367

RJH MOMENTUM H45

3D NO LIMIT 09E

JR Y168 GLORIA C104

HAROLDSON'S EMMA 45H 35L

LLL NUFF SAID 45H

HAROLDSON'S EMPRESS 2Z 48G

A moderate, correct daughter of Momentum from a good Nuff Said daughter with a BW of 93.3% on 4 calves and 110 WWR in our herd. In the top 20% for BW, WW, M&G, Scrotal, Fat and REA.

EPDs	
BW	1.1
WW	49
YW	75
M	19
M&G	44
SC	1.0
Fat	-.004
REA	.29
IMF	-.13
BW	71
WW	486
YW	736

101S/OHR

3/18/06

P42699372

RJH MOMENTUM H45

3D NO LIMIT 09E

JR Y168 GLORIA C104

TA-BAR DON 411E

HAROLDSON RAIDER P183 2Z

TA-BAR DONNA 411C

Young Momentum daughter with a super pedigree. Mother is a great uddered Dynasty granddaughter that is productive while keeping birth weights down. In the top 25% of the breed for CED, BW, WW, M&G, CEM, Scrotal, REA, BMI, CEZ, BII, and CHB.

EPDs	
BW	.4
WW	50
YW	75
M	18
M&G	42
SC	.9
Fat	.002
REA	.25
IMF	-.06
BW	69
WW	570
YW	842



411E - Dam of Lot 113

Purchase a Red Power bull and receive:

1. \$50 off if you take him home from the sale.
– Bring a neighbor and a trailer to multiply the savings!
2. Free delivery up to 300 miles.
– Further distances at cost to central delivery points.
3. Free wintering on bulls over \$2,500.
– We will keep the bulls at no cost until April 1.
4. More bull value for your dollar!
– Nowhere else will you find this many top end Red Angus bulls at affordable prices.

When experience matters you need...

Competitive Rates! Experienced Professionals!

- ❖ Sale Catalogs
- ❖ Brochures ~ Flyers
- ❖ Graphic Design
- ❖ Web Site Development

**Proud to prepare this
Red Power Sale Catalog**

**Virtual Solutions ~ Kleda Rae Kuehne
kleda@virtuolutionsvc.com ~ 701-845-4317**

Catalog Printed By: United Printing ~ Bismarck, ND

**Red Power
Performance Bull Sale**
16068 24th St SE
Argusville, ND 58005



**Want More?
We've Got It!**

- Performance
- Muscling
- Carcass Traits
- Maternal Excellence
- Fertility
- Sound Structure
- Calving Ease
- PROFITABILITY!

Lot 72

Return Service Requested

FIRST CLASS
U.S. Postage

PAID

Bismarck, ND 58504
Permit No. 256

“Put the Red Factor to work for you!”