

Red Power

Performance Bull Sale

52 Red Angus Bulls
27 Red Angus Heifers
12 Hereford Bulls



– Thursday, 1:00 PM (CST) –

Feb 16, 2006

ND Winter Show Building
Valley City, ND

**Red Power
Performance Breeders**

**OHR Red Angus
Lloyd Red Angus
Gerner Red Angus
Olson Hereford Ranch**

- General Information -

Sale Time: 1:00 CST, Thursday, February 16, 2006

A noon lunch will be served on sale day.

Location: Main Arena of the North Dakota Winter Show building in Valley City, ND – just north of Interstate 94 at exit 292 and up the hill one mile.

Motels: Headquarters – AmericInn (701) 845-5551

Delivery: Free delivery to central points up to 300 miles and further distances at cost. Take your bull home sale day and get \$50 off.

Free Wintering until April 1st of any bull purchase of \$2,500 or more. After April 1st at a cost of \$2/day. Insurance recommended.

Guarantee: All cattle are fully guaranteed according to the standards set by the American Red Angus and American Hereford Associations.

Terms: Terms of the sale are cash or check.

Settlement must be made immediately following the sale before animals can be loaded or delivered. Every animal sells to the highest bidder. Any correction from the auction stand takes precedence over printed material in the catalog.

EPDs: All EPDs are current as of January 8, 2006. Registration numbers are provided so you can research animals further at breed web sites: www.redangus.org or www.hereford.org.

Cattle on Display: All sale cattle will be available for viewing from 3 to 7 PM on Wednesday, February 15 and 9 AM to 1 PM Sale Day in the comfortable ND Winter Show building – parking on North and West ends. Each breeder will be caring for their own animals prior to the sale. We invite you to stop and inspect the cattle in their native setting.

Supplement Sheet: More information will be available upon request one week prior to the sale and available sale day, including: Ribeye Area, Back Fat, Marbling, Pelvic Area and Scrotal Measurement. EPDs Birth Wt., Weaning Wt., and Yearling Wt. are all provided in the catalog. We hope to provide you with the most accurate information possible so when you see the bulls you can make the best decision for your program.

Mail and Phone Bids: Bidders unable to make the sale may contact the sale staff or make prior arrangements to be on a sale day phone.

Sale Staff – Cell Phones

Neal Effertz, Auctioneer..... (701) 471-0153
Art Handel, Handel Marketing (605) 391-8233
Terry Robinson, Farm & Ranch Guide (701) 471-5153
Jay Effeldt, AHA..... (308) 386-2640
Carl Olson, Sale Manager (701) 361-0684

Sale Day Phone

Auction Block..... (701) 845-2555
Edward Olson, cell (701) 238-3601
Carl Olson, cell (701) 361-0684

Sale Consultant



Bryan Gill
Semen & Embryo Sales
Consulting Services
Sale Management

1614 28th Ave South
Fargo, ND 58103
Home/Office: (701) 239-6920
Cellular: (701) 730-0134

Email: bigredgenetics@hotmail.com ✧ Web site: www.bigredgenetics.com

Dear Cattlemen,

Welcome to the RED POWER PERFORMANCE BULL SALE on Thursday, February 16. We are your Northern source for quality bulls: OHR Red Angus, Lloyd Red Angus, Gerner Red Angus and Olson Hereford Ranch. We are 4 breeders with one goal of "Genetic Excellence." We share many of the same thoughts, goals and exciting vision for the future of the beef cattle industry.

The sale offering includes: 52 High Performance Red Angus Bulls, 27 Select Red Angus Heifers and 12 Excellent Polled Hereford Bulls. We have selected only the best bulls so that the highest quality can be made available for your selection. Performance is priority, but the sale offering will include: Calving ease, high maternal, superior carcass and growth bulls (many will excel in most traits). Every effort has been made to bring you the highest quality bulls backed by the most accurate information possible so you can select the best bull for your breeding program.

As the catalog gets mailed out the testing continues. A supplement sheet with a sample of the bulls and heifers selling will be available one week prior to the sale with additional data including: Carcass Data from Ultrasounding, Pelvic Area, and Scrotal Measurements.

Should you need additional information please feel free to contact any of us. See you on the 16th!

Sincerely,
Red Power Performance Breeders

Table of Contents

OHR Red Angus bulls	p. 3-14
Lloyd Red Angus bulls	p. 16-20
Gerner Red Angus bulls	p. 21-23
OHR Red Angus heifers	p. 24-27
Lloyd Red Angus heifers	p. 27-30
Gerner Red Angus heifers	p. 30-32
Olson Hereford Ranch bulls	p. 34-40

Noon Lunch ✦ 1:00 Sale Thursday, February 16, 2006

OHR Red Angus

Edward & Jeanne Olson
16068 24th St SE
Argusville, ND 58005
(701) 484-5779
cell (701) 238-3601

Lloyd Red Angus

Ed & Sue Lloyd
Box 248
Northwood, ND 58267
(701) 587-5080
agvfarm@polarcomm.com

Gerner Red Angus

Joe & Laverne Gerner
10504 Hwy 32 N
Hitterdal, MN 56552
(218) 962-3320
lgerner@tvutel.com

Olson Herford Ranch

Carl & Carla Olson
2713 166th Ave SE
Argusville, ND 58005
(701) 484-5068
olsoncandc@aol.com

The Red Color of Red Angus Has 3 Distinct Advantages

1. Red is the most populous color of cattle breeds world wide. Red Angus provides a continuity and uniformity of color to any crossbreeding system.
2. Red is more heat tolerant than black and the bronze pigmentation gives great resistance to cancer eye and sunburned udders. The majority of the world's cattle are in areas that need heat tolerance, so the red color is a definite advantage.
3. Being crossed red always breeds true. Red Angus carry no diluter genes and thus avoid the grays that result when crossbreeding with blacks.

Red Angus bulls make a great cross with many breeds to increase fertility, improve calving ease, moderate mature frame type, add maternal excellence and improve efficiency. Red Angus bulls are known to work especially well on Simmental and Charolais heifers. Calving ease and fertility are important because if the calf dies at birth or if the cows are open, there's nothing to wean. There are many Red Angus feeder calf sales to help you gain an additional premium for those Red Angus sired calves. Put the RED FACTOR to work in your program!

We Have What Everybody Wants,

The Respect of the Entire Cattle Industry . . .



. . . and it's not because of the color of our hide

2006 Red Angus Breed Average EPDs for 2005 born calves.

<u>BW</u>	<u>WW</u>	<u>YW</u>	<u>M</u>	<u>TM</u>	<u>ST</u>	<u>Marb</u>	<u>REA</u>	<u>Fat</u>
0.3	31	54	16	32	11	.07	.03	0

BW = Birth Weight
WW = Weaning Weight
YW = Yearling Weight

M = Milk
TM = Total Maternal
ST = Stayability

Marb = Marbling Score
REA = Ribeye Area
Fat = Back Fat Thickness

OHR Red Angus Lots 1 – 29

We are proud to offer you the most powerful group of bulls we've ever raised. They are very uniform and deep in quality with extra muscle, performance, structural soundness, calving ease and eye appeal. They are backed by productive problem-free mothers from strong cow families. Part of our offering is from OHRR Dakota Copper 29K – now in the ABS sire lineup and 2000 NILE Bull Calf Champion. These bulls have been developed on a roughage based ration to give you a very sound, good footed bull that will do well and last! This year we also have 2 super fall yearlings. We are a Johnes Test Negative - Level One herd.



1 OHRR 92M ADVANTAGE 5R

OHRR/5R 1/14/05 100% 1A 1025405

4L ADVANTAGE R9N PERKS ADVANCER 9088
 4L MS MAKE MY DAY R903
 OHRR 388 KING PENN 92M BJR KING OF KINGS 942
 PANHANDLE PENNY 388

EPDs	
BW	2.1
WW	40
YW	71
M	23
TM	43
ST	9
Marb	.07
REA	-.08
Fat	.01
BW	82
WW	730
YW	1351

Dam is a super 3-year-old. Her '04 heifer was a replacement that sold in the Santa Sale II last November for \$4,000 to Derry Cattle Co., Woods, SD. She's a great female and 5R will be a great herd bull. Production records and EPDs are as good as they get. R9N is an upcoming herd sire that, in our opinion, does everything right. MPPAs: Dam – 102, granddam – 109. Super bull here!



2 OHRR 24K RED CANYON 6R

OHRR/6R 1/16/05 100% 1A 1025359

SRR RED CANYON 213 LCHMN GRANDCANYON 1244G
 BLUE RIDGE KIMA 950
 OHRR 30H SOPHIA 24K OHRR 096 CUB CADET 30H
 OHRR MAC SOPHIA 32H

EPDs	
BW	1.2
WW	33
YW	59
M	20
TM	36
ST	11
Marb	.16
REA	.07
Fat	.01
BW	78
WW	688
YW	1298

Another pedigree loaded with great individuals – each one has its own list of positive traits. We especially like our daughters of 30H as do the Lloyds who shared the bull with us. Red Canyon doesn't miss. This bull is solid on every count – he'll do a great job!

3**OHRR 11M ADVANTAGE 7R**

OHRR/7R

1/17/05

100% 1A

1025346

4L ADVANTAGE R9N

PERKS ADVANCER 9088

4L MS MAKE MY DAY R903

OHRR 61K COPPER ROXXY 11M

OHRR DAKOTA COPPER 29K

OHRR FOXXY ROXY 61K

Heifer bull here – small birth weight out of a moderate 3-year-old cow. Lots of maternal power in this pedigree. If you need small calves that will have eye appeal and growth this is your bull.

EPDs

BW	-1.9
WW	22
YW	47
M	17
TM	28
ST	11
Marb	.02
REA	-.16
Fat	.01
BW	68
WW	527
YW	1148

4**OHRR 78L MR ROBUST 8R**

OHRR/8R

1/18/05

100% 1A

1025397

OHRR 9502 MR ROBUST 18N

BADLANDS MR BEEF 805

MESSMER OPHELIA 9502

OHRR KF 740 GOLD PENNY 78L

GLACIER EXPLORER 740

OHRR 388 GOLD PENNY 9J

Sire is Mr. Robust – top seller in our '04 sale. His calves all have extra punch. 18N had a 17.1" REA and 5.50 IMF score at 12 months. Dam 78L has a well-earned MPPA of 103 and produced the lead-off female in Santa I '04 that sold to Steve Meadows in South Carolina. Take a good look – the 10R bull is out of granddam 9J – these females mean business. Wts. and EPDs here are awesome.

EPDs

BW	2.8
WW	39
YW	65
M	20
TM	40
ST	10
Marb	.07
REA	-.16
Fat	-.01
BW	92
WW	742
YW	1459

**Lot 4****5****OHRR 62M ADVANTAGE 12R**

OHRR/12R

1/23/05

100% 1A

1025390

4L ADVANTAGE R9N

PERKS ADVANCER 9088

4L MS MAKE MY DAY R903

OHRR 9502 RAMS EVE 62M

LCHMN RAMPAGE 1098E

MESSMER OPHELIA 9502

Can't say enough about this bull's pedigree. He's second calf out of a beautiful Rampage ET daughter (dam 9502, is dam of Dakota Copper 29K – now in the 2006 ABS lineup). 62Ms '04 heifer is retained in our replacements.

R9N does everything right: great phenotype, super dam, great B to W to Y numbers, powerful EPDs – high quality semen, dark color, and A+ disposition. We highly recommend this bull!

EPDs

BW	2.1
WW	38
YW	66
M	20
TM	39
ST	11
Marb	.02
REA	-.15
Fat	-.01
BW	82
WW	698
YW	1207

6**OHRR-K-RA 9J ROBO GOLD 10R**

OHRR/10R

1/21/05

100% 1A

1060533

OHRR 9502 MR ROBUST 18N

BADLANDS MR BEEF 805

MESSMER OPHELIA 9502

OHRR 388 GOLD PENNY 9J

LCHMN RAMPAGE 1098E

PANHANDLE PENNY 388

Another powerful Robust son – 3/4 brother to 8R. Check these weights and EPDs. We expect his actual carcass data will be super as well. With all the superior females in his pedigree we know that we have another herd bull here. Dam 9J has a 102 MPPA and granddam is 109 – absolute top of the herd here.

Help yourself to one of the best to sell anywhere this year!

EPDs	
BW	0.3
WW	37
YW	63
M	17
TM	35
ST	9
Marb	.07
REA	-.11
Fat	-.01
BW	78
WW	720
YW	1341

**7****OHRR 304 MR ROBUST 14R**

OHRR/14R

1/23/05

100% 1A

1025363

OHRR 9502 MR ROBUST 18N

BADLANDS MR BEEF 805

MESSMER OPHELIA 9502

BADLANDS FANCY 304

RED HANDFORD T.C.B.

BADLANDS FANCY 110

This great cow is still weaning a 744 lb. bull – yearling 1328. She doesn't know she's almost 13, nor does anyone else. She does a great job year after year. Her only HC sold for \$3,500 in the '99 National sale and we're still waiting for another to keep here. Help yourself to some maternal power and longevity to go with carcass and performance in your next herd bull.

EPDs	
BW	2.8
WW	38
YW	65
M	16
TM	35
ST	10
Marb	.04
REA	-.10
Fat	-.01
BW	87
WW	744
YW	1328

8**OHRR 46G MR ROBUST 32R**

OHRR/32R

1/31/05

100% 1A

1025377

OHRR 9502 MR ROBUST 18N

BADLANDS MR BEEF 805

MESSMER OPHELIA 9502

OHRR 925 CUB LASS 46G

GLACIER CUB 446

MS NEO-SHO MEMORIALA925

Robust again out of one of our favorite cows. 46G is a real beauty – you can always find her calves as they look just like her – moderate, fancy, dark, and correct. She has a solid MPPA of 102 and never misses – one daughter sold in Santa I '04 and we have one in the herd.

Look for carcass data close to sale day – it should be good.

EPDs	
BW	-0.2
WW	29
YW	53
M	19
TM	33
ST	9
Marb	.15
REA	.03
Fat	-.02
BW	79
WW	682
YW	1215

9**OHRR 9M RAMPAGE 22R**

OHRR/22R

1/26/05

100% 1A

1025341

LCHMN RAMPAGE 1098E

BJR RAM 5162-3193

LEACHMAN AGNES 7632

OHRR A925 MS BEEF 9M

BADLANDS MR BEEF 805

MS NEO-SHO MEMORIALA925

Last chance for a Rampage son – he's a proven female producer and puts pounds and carcass data on his bulls. No calving problems either – average birth weight on 6 calf crops are in mid-70s for heifers and bulls. 1098E is also a double marker for the marbling gene. Maternal granddam is our oldest cow at 14 and still producing at the top.

EPDs

BW	2.4
WW	30
YW	54
M	16
TM	31
ST	10
Marb	-.06
REA	-.46
Fat	-.01
BW	86
WW	659
YW	1320

**10****OHRR 4K RED CUB 23R**

OHRR/23R

1/26/05

100% 1A

1025336

SRR RED CANYON 213

LCHMN GRANDCANYON 1244G

BLUE RIDGE KIMA 950

OHRR 50H ULTRA CUB 4K

OHRR 096 CUB CADET 30H

OHRR 41E MS ULTRA 50H

If you're looking for the head of the class it's right here! Dam 4K has had 4 calves: 2 daughters were retained by us, one bull sold in '04 sale to Larry Wild at Sykeston for \$3,200. 23Rs weaning index is 111 and everything else is in order also! We can't ask more of a cow than 4K has delivered: MPAA 105. Watch for carcass data. We plan to use this bull.

Selling 1/2 interest, 1/2 possession. Details sale day.

EPDs

BW	2.2
WW	40
YW	70
M	21
TM	41
ST	12
Marb	.19
REA	.01
Fat	.01
BW	83
WW	763
YW	1486



11**OHRR 58L DIVIDE 36R**

OHRR/36R

2/1/05

100% 1A

1060534

LCC DIVIDE 1435K

GLACIER DIVIDE 310

CJ'S HOBO MABLE

OHRR 806 TIFFANY 58L

BADLANDS MR BEEF 805

BADLANDS TIFFANY 524

A Divide son going back to National Champion female Tiffany 210 – she was a good one as was her daughter Tiffany 524. 36R started out small but came along very well. Divide cattle are moderate and thick with good attitudes. 36R is a twin.

EPDs	
BW	1.8
WW	43
YW	75
M	15
TM	37
ST	9
Marb	.10
REA	-.10
Fat	-.01
BW	60
WW	613
YW	1287

12**OHRR 15H RC RAMBLER 47R**

OHRR/47R

2/6/05

100% 1A

1025352

SRR RED CANYON 213

LCHMN GRANDCANYON 1244G

BLUE RIDGE KIMA 950

OHRR SOPHIA PAIGE 15H

LCHMN RAMPAGE 1098E

OHRR MACS SOPHIA 91F

Dam is Rampage-McIntosh cross – we really like those females. Paige 15H and her dam have very good track records – should be a great combination with carcass sire Red Canyon 213.

EPDs	
BW	2.7
WW	36
YW	60
M	18
TM	36
ST	12
Marb	.09
REA	-.05
Fat	.01
BW	83
WW	685
YW	1263

13**OHRR 31J DAK COPPER 49R**

OHRR/49R

2/8/05

100% 1A

1025366

OHRR DAKOTA COPPER 29K

LCHMAN COPPER ROB 1204D

MESSMER OPHELIA 9502

OHRR 503 MAC SHAREE 31J

RBRTS MCINTOSH II 344

BADLANDS SHAREE 503

A great combo here – Sharee cow family and 29K – sire of our top selling bull in the '05 sale. Full brother sold last year to Barry Borg at Valley City. Great performance and EPDs – 49R could do it all.

EPDs	
BW	0.5
WW	35
YW	55
M	20
TM	37
ST	11
Marb	-.02
REA	-.08
Fat	.01
BW	78
WW	681
YW	1347

**Lot 13**

14**OHRR 83L RAMS FAYET 56R**

OHRR/56R

2/11/05

100% 1A

1025401

LCHMN RAMPAGE 1098E

BJR RAM 5162-3193

LEACHMAN AGNES 7632

OHRR 182H FAYET 83L

GLACIER EXPLORER 740

RED HOWE MS KURUBA 112H

We like this dam a lot – her dam is Canadian-bred and has done an excellent job for us. EPDs and performance are in order. He'll work well on heifers or cows.

EPDs

BW	-1.0
WW	18
YW	36
M	22
TM	31
ST	10
Marb	-1.0
REA	-4.3
Fat	.00
BW	76
WW	655
YW	1258

15**OHRR 25K RED CANYON 57R**

OHRR/57R

2/11/05

100% 1A

1025360

SRR RED CANYON 213

LCHMN GRANDCANYON 1244G

BLUE RIDGE KIMA 950

OHRR SISTR BEAUTY 25K

HLH BUSTER 406 603

SAR RED BEAUTY 3091

Dam 25K produced an '04 heifer that had a IMF score of 5.39 – one of the highest in the '05 sale. Granddam 3091 had 2 black parents – she was Supreme Champion Female at '95 Ag Expo in Minot. Sire 213 could produce even higher carcass data in 57R.

EPDs

BW	3.6
WW	40
YW	69
M	15
TM	36
ST	10
Marb	.12
REA	-.05
Fat	.00
BW	90
WW	644
YW	1260

**16****OHRR 15F CANYON MACK 59R**

OHRR/59R

2/12/05

100% 1A

1025351

SRR RED CANYON 213

LCHMN GRANDCANYON 1244G

BLUE RIDGE KIMA 950

OHRR MS 925 SCARLETT15F

RBRTS MCINTOSH II 344

MS NEO-SHO MEMORIALA925

Dam 15F has quite a superior performance record here – she's moderate in size with a perfect udder – even at age 10. Her three daughters in herd weaned an average of 729 lbs. on their '05 calves.

McIntosh and 213 are both double markers for the marbling gene. Wts. and EPDs are super – this is the herd bull for sure!

EPDs

BW	3.2
WW	43
YW	71
M	20
TM	41
ST	10
Marb	.12
REA	-.03
Fat	.00
BW	80
WW	744
YW	1347

17**OHRR 5114 (ND STOCKMAN) 115R**

OHRR/115R

2/12/05

100% 1A

1060535

LSF COMBINATION A301M

LCHMN TOP BRASS 1049H

WHF LASS 27G-29J

RBRTS SAMARIA-BMR 5114

SSS BOOMER 803B

RBRTS DALMARIE 153A

This bull has created some excitement here – he's an ET raised in a commercial herd so we didn't see him until he was weaned. His dam is a great Roberts cow and we intend to use this bull some in our program. 5114 has a 107 MPPA and her dam is 108 MPPA. Definitely a herd bull here!

Selling 1/2 interest, full possession, 1/2 semen sales.

EPDs	
BW	4.2
WW	45
YW	79
M	19
TM	41
ST	13
Marb	.15
REA	.07
Fat	.01
BW	102
WW	822
YW	1312

**18****OHRR 38K DAK COPPER 61R**

OHRR/61R

2/15/05

100% 1A

1025373

OHRR DAKOTA COPPER 29K

LCHMAN COPPER ROB 1204D

MESSMER OPHELIA 9502

OHRR SISTR SCARLET 38K

HLH BUSTER 406 603

OHRR MS 925 SCARLETT15F

One of the really good 29K sons we have raised. His dam is a Buster daughter out of a McIntosh 15F cow that has a great bull (59R) in this sale as well. Check EPDs and performance and you'll see that 61R is a solid herd bull prospect.

EPDs	
BW	-0.9
WW	36
YW	62
M	19
TM	37
ST	11
Marb	-.04
REA	-.25
Fat	.00
BW	76
WW	729
YW	1313



19

OHRR 65H MAJOR MAHOGNY 64R

OHRR/64R 2/17/05 100% 1A 1025393

LCC MAJOR LEAGUE A502M | BFCK CHEROKEE CNYN 4912
 | KRN REBA'S ROBIN
 OHRR 508 MAHOGANY 65H | RBRTS MCINTOSH II 344
 | JVD MAHOGANY 508

EPDs	
BW	-0.6
WW	34
YW	56
M	18
TM	35
ST	11
Marb	.14
REA	.14
Fat	.00
BW	72
WW	662
YW	1176

Here's one of the good sons of the record high selling Red Angus bull and our powerhouse cow 65H. He is a legitimate calving ease bull and we would like to use him on a few heifers early, thus the 1/2 interest. 65H has been in transplant since this fall and has some great females in our herd.

Selling 1/2 interest; full possession – we'd like limited early use.

20

OHRR 10H DAKOTA RAMBLER 75R

OHRR/75R 2/22/05 100% 1A 1025344

OHRR DAKOTA COPPER 29K | LCHMAN COPPER ROB 1204D
 | MESSMER OPHELIA 9502
 OHRR MS SCARLETT 10H | LCHMN RAMPAGE 1098E
 | OHRR MS 925 SCARLETT15F

EPDs	
BW	3.2
WW	43
YW	67
M	22
TM	43
ST	11
Marb	-.04
REA	-.19
Fat	.01
BW	94
WW	778
YW	1477

Here's our replacement bull for 29K's natural service since he has gone to ABS. 10H has had 6 bulls including 77M that we sold to Larry Wild and have used early two season. She is a great cow with an earned MPPA of 104.

We are selling 1/2 interest, 1/2 possession, and 1/2 semen sales. Details sale day.

21

OHRR A925 DAK COPPER 86R

OHRR/86R 3/3/05 100% 1A 1025415

OHRR DAKOTA COPPER 29K | LCHMAN COPPER ROB 1204D
 | MESSMER OPHELIA 9502
 MS NEO-SHO MEMORIALA925 | LEACHMAN LNCNMEM6283
 | VAF 0336

EPDs	
BW	2.7
WW	37
YW	59
M	17
TM	36
ST	9
Marb	.02
REA	-.19
Fat	.01
BW	89
WW	755
YW	1301

A March son of 29K and our 14-year-old "granny" cow who still weans a 755 lb. bull calf at her age. She still looks good and does a great job. We have sold a lot of bulls and have some very productive females from her. We can't say enough about 29K!

22

OHRR 14M GRAND DIVIDE 89R

OHRR/89R 3/8/05 100% 1A 1025349

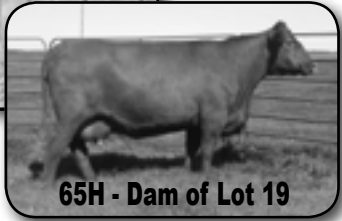
LCC DIVIDE 1435K | GLACIER DIVIDE 310
 | CJ'S HOBO MABLE
 OHRR 65H GRAND MAHOGANY 14M | LCHMN GRANDCANYON 1244G
 | OHRR 508 MAHOGANY 65H

EPDs	
BW	-1.1
WW	30
YW	58
M	19
TM	34
ST	10
Marb	.03
REA	.03
Fat	.01
BW	63
WW	671
YW	1255

Dam was Supreme Champion Female at the 2004 ND Winter Show. Her first calf sold to Kemen Farms in MN at the ND Red Select for \$3,900. She was a beauty. 14M is pretty as a picture, moderate framed, feminine, with an absolutely perfect udder. Think about the females this bull will put in your herd. Out of the phenotypically ideal Divide bull!



Lot 19



65H - Dam of Lot 19



Lot 20



Lot 21



14M - Dam of Lot 22

23**OHRR 15N COPPER KING 74R**

OHRR/74R

2/22/05

100% 1A

1025354

OHRR 31K MACS KING 4N

BJR KING OF KINGS 942

OHRR 503 MAC SHAREE 31K

OHRR 31J MS COPPER 15N

OHRR DAKOTA COPPER 29K

OHRR 503 MAC SHAREE 31J

A calving ease bull out of a nice first calf heifer and Macs King 4N – co-owned with Scott Wagner in South Dakota. He sold in the '04 sale for \$4,000. Birth weight was 59 as he was born early but did a nice job of catching up to his contemps.

This is a heifer bull!

EPDs

BW	-1.6
WW	27
YW	47
M	21
TM	35
ST	11
Marb	-0.06
REA	-1.14
Fat	.01
BW	59
WW	644
YW	1114

24**OHRR 155 MHGNY DIVIDE 90R**

OHRR/90R

3/9/05

100% 1A

1025350

LCC DIVIDE 1435K

GLACIER DIVIDE 310

CJ'S HOBO MABLE

RAG MAHOGANY ROSE 155

GLACIER EXPLORER 740

OHRR MACS MAHOGANY 78J

Mahogany Rose is another of our young and beautiful females. Her first calf – a heifer – also sold at ND Red Select in '03 – she started the sale and brought \$3,900 – high price of the day and sold to David Allen in WI. This bull has a great dam and a great sire and will be an asset to any program.

EPDs

BW	0.7
WW	27
YW	48
M	19
TM	33
ST	9
Marb	.00
REA	-2.20
Fat	.00
BW	82
WW	649
YW	1259

25**OHRR 38H CHF ADVANTAGE 101R**

OHRR/101R

3/24/05

100% 1A

1025372

4L ADVANTAGE R9N

PERKS ADVANCER 9088

4L MS MAKE MY DAY R903

RED HOWE MS FLAME 38H

RED BVR RAB-STAR 56C

RED MS FLAME DDH 83C

Another very young bull – dam 38H had the top selling female in our '04 sale at \$2,500 going to JK Cattle Co. in KS. She had a 9.7 REA and IMF score of 4.86. Advantage R9N is a double marker for marbling gene in Quantum and Genestar tests. There should be some outstanding carcass data on this bull!

EPDs

BW	3.5
WW	35
YW	61
M	16
TM	34
ST	11
Marb	-0.01
REA	-0.03
Fat	.00
BW	86
WW	652
YW	1281

**38H - Dam of Lot 25**

26**OHRR KRA 50M EXPLORER 97R**

OHRR/97R

3/18/05

100% 1A

1025382

OHRR 6H EXPLORER 97N

GLACIER EXPLORER 740

OHRR 3128 MAC HONEY 6H

OHRR 105H SEMONE 50M

OHRR 524 DURANGO 105H

SEXTON'S SEMONE 9930

This bull is very young but has come along nicely. His dam is a very moderate cow with a great production record. Her first calf sold in our '05 sale to Lost Meadows Farm in MN for \$1,800. She was fancy and feminine and very popular with a lot of folks at the sale.

Sire Explorer means calving ease and great maternal quality.

EPDs	
BW	1.3
WW	22
YW	40
M	16
TM	27
ST	10
Marb	-.09
REA	-.23
Fat	.01
BW	82
WW	639
YW	1185

27**OHRR 4M DAK COPPER 104R**

OHRR/104R

4/2/05

100% 1A

1025337

OHRR DAKOTA COPPER 29K

LCHMAN COPPER ROB 1204D

MESSMER OPHELIA 9502

OHRR 15F RAMPAGE 4M

LCHMN RAMPAGE 1098E

OHRR MS 925 SCARLETT15F

A very young bull out of a second calf heifer – dam's first bull sold last year for \$3,500. She's done a great job! Sire 29K has given us some outstanding bulls and females and they are very popular. We think 104R has great potential to produce.

EPDs	
BW	0.8
WW	33
YW	54
M	21
TM	38
ST	11
Marb	-.09
REA	-.26
Fat	.01
BW	79
WW	679
YW	1225

Purchase a Red Power bull and receive:

1. \$50 off if you take him home from the sale.
 - Bring a neighbor and a trailer to multiply the savings!
2. Free delivery up to 300 miles.
 - Further distances at cost to central delivery points.
3. Free wintering on bulls over \$2,500.
 - We will keep the bulls at no cost until April 1.
4. More bull value for your dollar!
 - Nowhere else will you find this many top end Red Angus bulls at affordable prices.



Steven Meadows with OHR's 45P Reserve Champion at South Carolina State Fair

2 Fall Bulls

28

OHRR 61K ROXXYS GOLD 113P

OHRR/113P

9/10/04

100% 1A

1021211

OHRR-KRA WOOLY BOY 43M

LCHMAN COPPER ROB 1204D

OHRR 388 GOLD PENNY 9J

OHRR FOXXY ROXY 61K

LCHMN RAMPAGE 1098E

ROBERTS PR-FOXXY 18B

EPDs

BW	-1.2
WW	24
YW	47
M	20
TM	32
ST	11
Marb	-.02
REA	-.24
Fat	.02
BW	75
WW	624
11/20/05	1325

A double-bred Rampage and grandson of our #1 MPPA cow, Foxy 18B, at 110. 61K's '04 fall female was kept as a replacement – a great cow family. Wooly Boy was a favorite in the '03 sale going to Knecht Farms in SD. He's out of the good 9J cow, dam of 10R bull and granddam of 8R bull in this sale. 113P will do well on heifers or cows.



29

OHRR 67G COPPER CUB 114P

OHRR/114P

9/16/04

100% 1A

1021212

OHRR-KRA WOOLY BOY 43M

LCHMAN COPPER ROB 1204D

OHRR 388 GOLD PENNY 9J

OHRR 096 CUB LASS 67G

GLACIER CUB 446

BJR TJ LASS 388-8507

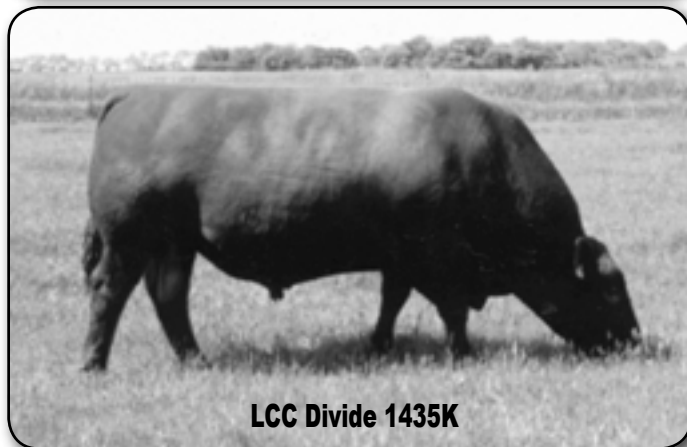
EPDs

BW	-0.7
WW	22
YW	44
M	26
TM	37
ST	11
Marb	.02
REA	-.23
Fat	.01
BW	81
WW	650
11/20/05	1390

A good solid fall bull out of a beautiful productive cow. She has it all – great angular phenotype, udder, and a dam (096) that was simply the best. 67G has earned her 104 MPPA. Her 100M bull produced 3 heifers – 5P sold to Lost Meadows Farm last year for \$4,000; 11P sold in Santa II as a bred heifer to Derry CC in SD for \$4,000; and 3P is in our replacement group. Quite impressive! Herd bull here!



Reference Sires



Lloyd Red Angus Lots 30 – 44

We will be offering the top end of our 2005 bull calf crop as well as 3 coming 2-year-olds. We select mate our top cows to solid AI sires, selecting for a balance of traits. We have a nice group of heifers in this sale also. We would like to invite you to look over the bulls and be with us on Thursday, February 16.



30

LLOYD ARROW 06N-24R

ESL/24R

2/22/05

100% 1A

1034819

LMG GILLS HORIZON 1551

LMG GILL HORIZON 5379

LMG LYDIA 727

ESL KARIN ARROW 56F-3

LLOYD 4X ARROW

OHRR MONARCH KARIN 56F

Dam is a 1st calf heifer. The granddam, Monarch Karin, is a tremendous cow. We have several of her offspring in our herd. The sire has stretch and stands tall. Gill is a bull with a 6.7 frame, and whose weight is about 2400 lbs. Dam is also 6.6 framed.

EPDs

BW	2.6
WW	39
YW	62
M	15
TM	34
ST	11
Marb	-.06
REA	-.13
Fat	.00
BW	83
WW	712
YW	1132

31

LLOYD MCINTOSH 07L-04R

ESL/04R

1/17/05

100% 1A

1034820

LMG GILLS HORIZON 1551

LMG GILL HORIZON 5379

LMG LYDIA 727

LLOYD HEVN FIREFLY 67-01

LCHMN HEVN'S SAKE 1002F

LLOYD MONARCH FIREFLY 11J

Hevn's Sake has sired some great cows and Hevn Firefly is one of them. Her great-grandmother is OHR Monarch Karin 56F, a stalwart in the Red Angus breed. Gill adds height to this calf. Frame of 6.6 is expected. Should be OK for heifers.

EPDs

BW	-1.8
WW	31
YW	56
M	13
TM	29
ST	10
Marb	-.12
REA	-.09
Fat	.00
BW	70
WW	613
YW	1240

32

LLOYD DUCHESS MILL 1139-11R

ESL/11R

1/29/05

100% 1A

1034857

LLOYD MILLENIUM 13-02

5L MILLENIUM RED 816

FORSTER COPPERQUEEN 7168

LCHMN DUCHESS H1139

GLACIER MARIAS 54B

LMAN DUCHESS 9286

Another Millenium bull that has a lot of mass. He is thick and strong. Millenium is built this way, except this bull is taller and a little longer. The dam has produced really good stout bulls for us. Size will be about 6.6. We wish to collect on him so will retain a 1/3 interest.

EPDs

BW	1.2
WW	32
YW	55
M	21
TM	37
ST	15
Marb	.20
REA	.05
Fat	-.01
BW	83
WW	665
YW	1281

33**LLOYD MONARCH 11M-01R**

ESL/01R

1/13/05

100% 1A

1034822

ESL MONARCH KING 31-3

BJR KING OF KINGS 942

OHRR MONARCH KARIN 56F

LLOYD LAKINA 40-2

BADLANDS MR BEEF 805

SHOCO LAKINA 606

The grandsire, King of Kings, is a large, easy fleshing bull. He has four of the stalwart dams of the breed in his pedigree. We have eight calves on the ground this year from Monarch King 31-3. Anderson of Sharon, ND, purchased him in 2004. We used him on eight cows.

We are retaining a 1/3 ownership so we can collect semen.

EPDs

BW	4.1
WW	43
YW	73
M	16
TM	38
ST	9
Marb	-.01
REA	-.16
Fat	.00
BW	94
WW	719
YW	1240

**Lot 33****34****LLOYD CHIEF 1087-14R**

ESL/14R

2/2/05

100% 1A

1034853

LLOYD MILLENIUM 13-02

5L MILLENIUM RED 816

FORSTER COPPERQUEEN 7168

LCHMN ABIGAIL H1087

LCHMAN ABOVE HEAVEN 1018F

LMAN ABIGAIL B1091

Dam was purchased from Leachman's in 1998 as a calf. Well built with really solid feet and legs. Millenium has a good structure, with a 6.3 frame. He is very congenial and very easy fleshing. This bull is a standout among his peers.

We will retain 1/3 interest in order to collect semen.

EPDs

BW	5.7
WW	36
YW	61
M	22
TM	40
ST	14
Marb	.05
REA	.01
Fat	-.02
BW	102
WW	656
YW	1329

**Lot 34**

35**LLOYD STAR KING 1132-05R**

ESL/05R

1/17/05

100% 1A

1034856

ESL MONARCH KING 31-3

BJR KING OF KINGS 942

OHRR MONARCH KARIN 56F

LCHMAN STAR H1132

GLACIER MARIAS 548

LMAN STAR 9015

This is a large volume bull. At weaning he was 840 lbs. with an adjusted weight of 697 lbs. He has always been the largest bull among his peers, with great volume. The Monarch dam produces large offspring.

EPDs

BW	5.1
WW	41
YW	66
M	19
TM	40
ST	11
Marb	.08
REA	.01
Fat	.01
BW	101
WW	697
YW	1264

**Lot 35****36****LLOYD GILL 30N-10R**

ESL/10R

1/28/05

100% 1A

1034831

LMG GILLS HORIZON 1551

LMG GILL HORIZON 5379

LMG LYDIA 727

ESL DIAMOND VERM 1K-3

BIEBER VERMILLION 7975

DRL DIAMOND HANNA

The Diamond Hanna cow is one of two cows that we recently selected to become the foundation for our herd. She has strong legs, easy fleshing, great disposition, super motherability and has always produced a calf. We recently flushed her to Von Forrell's 9088 bull. This Horizon calf should frame up to 6.6.

EPDs

BW	-.02
WW	36
YW	63
M	20
TM	38
ST	10
Marb	-.01
REA	-.10
Fat	.00
BW	74
WW	676
YW	1182

37**LLOYD HAWK 11J-09R**

ESL/09R

1/26/05

100% 1A

1034821

BIEBER MIGHTY HAWK 9648

JHE CANYON HAWK 1062

BIEBER TINA 7375

LLOYD MONARCH FIREFLY 11J

RBRTS MCINTOSH II 344

OHRR MONARCH KARIN 56F

Hawk was our newest purchased sire in '04. He is long, fleshy, wide, with a great stride. He covers a lot of cows in a short time period. Height is 6.7 and has one of the largest ribeyes around at 0.40. The 11J bull calf has curly hair, is friendly and carries himself well with a nice stride.

EPDs

BW	4.3
WW	39
YW	62
M	13
TM	32
ST	9
Marb	-.06
REA	.10
Fat	.00
BW	99
WW	647
YW	1212

38**LLOYD PRYOR 1263-37R**

ESL/37R

3/18/05

100% 1A

1034851

BIEBER MIGHTY HAWK 9648

JHE CANYON HAWK 1062

BIEBER TINA 7375

LCHMN PRYOR G1263

LMAN LADIES MAN 1144B

304 JHL

This dam has about a 6.2 frame. The bull calf should be about 6.4. He grew out well and has done well after weaning. His quality numbers are very good and well balanced.

EPDs

BW	1.3
WW	32
YW	55
M	14
TM	30
ST	9
Marb	.12
REA	.10
Fat	.01
BW	88
WW	671
YW	1074

39**LLOYD HEART GILL 52M-24RX**

ESL/24RX

2/24/05

100% 1A

1034839

LMG GILLS HORIZON 1551

LMG GILL HORIZON 5379

LMG LYDIA 727

LLOYD CUPID 36-2

BIEBER VERMILLION 7975

MS FORSTER CUPID 8069

This young cow was a 1st calver who really came through. Her bull calf has done very well. His EPDs are exceptional. Gill's quality numbers are not as good as we want, but the dam made up for that. His yearling EPD is the highest we have at 75.

EPDs

BW	4.1
WW	46
YW	72
M	18
TM	41
ST	9
Marb	-.01
REA	-.10
Fat	.00
BW	92
WW	738
YW	1187

40**LLOYD GRAND CHIEF 06J-36R**

ESL/36R

3/18/05

100% 1A

1054541

LCHMN GRAND CANYON 1244G

BUF CRK CHIEF 824-1658

KRN REBA'S ROBIN

LMAN DINA B1146

LMAN KING JAMES 8665

LEACHMAN DINA J 5944

This bull is a full brother to the \$5,000 bull sold in this sale in 2005. His birth weight at 91 lbs. is a lot less, however. He is darker colored. KRN Reba's Robin has produced great bulls including the \$235,000 Major League.

We will retain 1/3 interest to collect semen.

EPDs

BW	2.6
WW	40
YW	72
M	21
TM	41
ST	11
Marb	-.05
REA	-.04
Fat	.01
BW	91
WW	682
YW	1180

**Lot 40**

41

LLOYD CANYON APR-40R

ESL/40R

3/20/05

100% 1A

1054539

CHEROKEE CANYON | BUF CRK CHF 824-1628
 | MRM 1431 8611 9109

LARSON FLO-MARIE 185 | LEACHMAN MONU 2X 8096
 | LARS FLOMARIE 866-124

This mating has produced a really good bull. This ET bull was raised by a commercial cow that is very maternal. The Monu 2X family of dams has always been exceptional. Buf Crk had been the most sought after breeding bull until Cherokee Canyon came on the scene.

We would like to collect him so will retain a 1/3 interest.

EPDs

BW	-.1
WW	37
YW	57
M	24
TM	43
ST	13
Marb	.24
REA	.20
Fat	.0
BW	89
WW	709
YW	1046

42

LLOYD CARY MILL RED 04

ESL/33P

3/2/04

100% 1A

967826

LLOYD MILLENNIUM 12M | 5L MILLENNIUM RED 816
 | FORSTER COPPERQUEEN 7168

CBR MISS CANDI 9526-683 (812) | MESSMER CANYON 9526
 | CBR DAKOTANIS 3406-72

Dam is from Campbells of SD. We had her 1st son sell for \$3,900 to Andersons of Sharon, ND, and he is still being used. The Millennium 12M sire is very congenial and is easy fleshing with a near perfect structure. We have several heifers from him in 2005. Cary Mill is a tall bull, 6.8, with a good disposition. This is an 18-month-old bull.

We want to collect on him so we will retain a 1/3 share.

EPDs

BW	4.1
WW	43
YW	71
M	19
TM	41
ST	14
Marb	.09
REA	.01
Fat	.00
BW	98
WW	549
YW	

43

LLOYD MY DAY RIDER 04

ESL/61P

5/5/04

100% 1A

967821

LMG GILLS HORIZON 1551 | LMG GILL HORIZON 5379
 | LMG LYDIA 727

LLOYD MELODY KAMA 55K | BJR MAKE MY DAY 981
 | BJR MELODY 1239-923

We raised the 55K dam from an ET. The BJR cows are well known to be really good producers. Gill will add some height to this cross. The dam is about 6.2 while Gill is 6.8. Note the May 5th date of calving. The bull will be 20 months old on sale day.

EPDs

BW	.6
WW	40
YW	66
M	19
TM	39
ST	10
Marb	.15
REA	-.10
Fat	.00
BW	84
WW	644
YW	

44

LLOYD ESTONA HIHO 04

ESL/60P

05/05/04

100% 1A

967824

LMG GILLS HORIZON 1551 | LMG GILL HORIZON 5379
 | LMG LYDIA 727

LLOYD TILLY ESTONA | BJR HI HO 916
 | BJR ESTONA 1081-574

This bull's dam is an ET that we raised. BJR HIHO 916 has been a prominent sire. This cow's frame is about 6.5. Gill's is 6.8.

EPDs

BW	1.4
WW	37
YW	61
M	16
TM	34
ST	10
Marb	-.10
REA	-.04
Fat	-.02
BW	87
WW	612
YW	

Gerner Red Angus Lots 45-52

We are proud to be a part of the fifth annual Red Power Bull Sale. We have been breeding Red Angus cattle for 14 years and really look forward to every new year with anticipation in producing heifers and bulls for all cattlemen, registered and commercial. We carefully select mate our strong productive cows to deliver calves of high quality. We breed for performance in maternal and growth. Our cattle have been tested for TB and can be exported with confidence.



45

JLRA MONU FRAZER R05

R05/JLRA

1/13/05

100% 1A

1030706

BJR MONU 4X-303

RED SSS MONU4X 237C

RCRA SAMANTHA

BIEBER HOLLY 7078

BIEBER FRAZER 5884

BIEBER HOLLY 5463

EPDs

BW 3.2

WW 44

YW 73

M 8

TM 30

ST 15

Marb -.05

REA -.08

Fat -.02

BW 94

WW 713

YW 1188

An AI son of BJR Monu 4x, who is a top performance sire from Accelerated Genetics. His progeny has topped sales across the country. The dam, Bieber Holly, is from a very good uddered, fertile cow family.



46

JLRA CHAPPARRAL R14

R14/JLRA

1/29/05

100% 1A

1030713

LARSON CHAPPARRAL 986

LCHMN HEVN'S SAKE 1002F

LARSON MARIE 567-866

LMG SARA 1079

BJR MONU 4X-303

LMG SARA 328-817

EPDs

BW 0.4

WW 39

YW 68

M 17

TM 36

ST 14

Marb .02

REA -.09

Fat .00

BW 88

WW 717

YW 1225

This young heifer bull comes from the famous Larson Marie family of Larson Red Angus in Montana and combines the blood lines of Marie and Hevn's Sake. The dam is a daughter of the great LMG Sara 328-817 of Gill Red Angus. Here are two of the best pedigrees in the Red Angus breed.

47**JLRA RAMBECK R07**

R07/JLRA

1/18/05

100% 1A

1030703

CBR RAM 3109-936

BHR RAMBO 862B

CBR AUDREY 936-45

JLRA DYANA

LTD H279-1514 DYN

CBR DYANA 5703-284

Another top sire from our herd bull, CBR Ram 3109-936. He is very stylish and good looking. Goes back to the very strong Beckton breeding on the dam's side. Rambeck will make a good heifer bull.

EPDs	
BW	0.8
WW	26
YW	47
M	15
TM	28
ST	7
Marb	
REA	
Fat	
BW	84
WW	686
YW	1213

**48****JLRA TOPPER R08**

R08/JLRA

1/22/05

100% 1A

1030707

LARSON CHAPPARRAL 986

LCHMN HEVN'S SAKE 1002F

LARSON MARIE 567-866

SEXTON'S TOPPER 9518

BIEBER LUCAS 4119

BIEBER TOPPER 4205

Another AI son of Larson Chapparral. With the dam, Sexton Topper, this makes a very strong performance package. This bull is a very stout muscular bull.

EPDs	
BW	0.6
WW	33
YW	51
M	14
TM	30
ST	11
Marb	.04
REA	-.10
Fat	.00
BW	90
WW	723
YW	1180

49**JLRA KETCHUM R03**

R03/JLRA

12/30/04

100% 1A

1030698

VGW RATTLER 908

SHOCO SIR ROBIN

VGW DORA-SHIP 9348

SJBR ZAIDIA 101

BADLANDS T-BONE 918

MS HAMMEL R-TOP J65

A VGW Rattler 908 son – the great performance sire at Gill Red Angus with good growth and maternal characteristics. The mother was purchased from the Minnesota Great Northern and has been an outstanding fertile cow for our herd.

EPDs	
BW	1.0
WW	30
YW	56
M	4
TM	19
ST	10
Marb	.01
REA	-.02
Fat	.00
BW	80
WW	576
YW	1044

50**JLRA DAKOTA RAM R11**

R11/JLRA

1/26/05

100% 1A

1030696

CBR RAM 3109-936

BHR RAMBO 862B

CBR AUDREY 936-45

OHRR 13K-29K COPPER LASS 8M

OHRR DAKOTA COPPER 29K

OHRR 30H SUMMER 13K

Here is a son from our herd sire, CBR Ram 3109-936 – a maternal grandson of the great Rambo 502. This sire along with the dam, OHR 13K-29K Copper Lass 8M from OHR Red Angus, makes a very strong performance package.

EPDs

BW	1.5
WW	30
YW	53
M	18
TM	33
ST	8
Marb	.09
REA	.02
Fat	.00
BW	92
WW	740
YW	1231

51**JLRA RAMROB R06**

R06/JLRA

1/15/05

100% 1A

1030709

CBR RAM 3109-936

BHR RAMBO 862B

CBR AUDREY 936-45

JLRA RACHEL

LMAN KING ROB 8621

BIEBER DAPHNE 5550

Probably my number one bull out of our herd bull, CBR Ram 3109-936. Take an extra long look. The dam, Rachel, is backed by King Rob. Rachel keeps delivering high performance calves each year.

EPDs

BW	2.1
WW	23
YW	47
M	16
TM	28
ST	10
Marb	
REA	
Fat	
BW	98
WW	707
YW	1169

52**JLRA CHATEAU R10**

R10/JLRA

1/26/05

100% 1A

1030710

GLACIER CHATEAU 744

LMAN KING ROB 8621

GLACIER REBALA

JLRA BROOKE

SCHAUER CONAGHER 9704

BIEBER DAPHNE 6067

An AI son of Glacier Chateau who comes from the famous King Bob. The dam, JLRA Brooke, is a direct daughter of Leachman Robin Hood – loaded with milk and performance.

EPDs

BW	0.3
WW	34
YW	65
M	18
TM	35
ST	14
Marb	.06
REA	.15
Fat	.02
BW	74
WW	604
YW	1060

**744 - Sire of Lot 52**

Red Angus Heifers Lots 53-86

We are offering 27 excellent, top quality Red Angus yearling registered heifers. These heifers are from productive, trouble free cows with good feet and udders. They are the kind we'd like to buy! a number of these heifers are SHOW QUALITY! The heifers have not had extra care but have been developed on a roughage diet as if we would be keeping them for our own replacements. Lots 53 to 62 are from OHR Red Angus; lots 63 to 73 are from Lloyd Red Angus; lots 74 to 79 are from Gerners. Here's an opportunity to select females from the area's top breeders! OHR offers semen on bulls they own to be used for breeding these females.

53

OHRR 81N COPPER VANNA 3R

OHRR/3R

1/12/05

99.4% 1B

1025399

4L ADVANTAGE R9N

PERKS ADVANCER 9088

4L MS MAKE MY DAY R903

OHRR 30J MS COPPER 81N

OHRR DAKOTA COPPER 29K

OHRR 35B MACS LELA 30J

EPDs

BW	0.6
WW	38
YW	66
M	19
TM	38
ST	10
Marb	.02
REA	-.10
Fat	.01
BW	73
WW	625
YW	1097

A super young female – out of a first calf heifer – her dam, 30J, had a 3750 bull in the '05 sale. Granddam, 35B, produced 7 bulls with an average AWW of 733 lbs. and 3 females with an average AWW of 606 lbs.

Advantage is a great sire backed up by superior females. This is a cow that will increase your profits!



54

OHRR 91F ROBUSTA LASS 21R

OHRR/21R

1/26/05

100% 1A

1025403

OHRR 9502 MR ROBUST 18N

BADLANDS MR BEEF 805

MESSMER OPHELIA 9502

OHRR MACS SOPHIA 91F

RBRTS MCINTOSH II 344

LMB ST SOPHIA 704

EPDs

BW	1.4
WW	31
YW	52
M	11
TM	26
ST	8
Marb	.05
REA	.09
Fat	-.01
BW	74
WW	606
YW	857

Daughter of our top selling – #1 carcass bull in our '04 sale and a nine-year-old McIntosh daughter that has done a great job for us. Note Robust is a son of 9502, one of OHR's best producers. Also the dam of McIntosh 344 is one of the best cows we've seen, as was Sophia 704. Robust had a 17.1 Ribeye at 12 months of age and an IMF of 5.50.

We think 21R will be a great cow!

55**OHRR 61J DAK MOONBEAM 50R**

OHRR/50R

2/8/05

100% 1A

1025389

OHRR DAKOTA COPPER 29K

LCHMAN COPPER ROB 1204D

MESSMER OPHELIA 9502

OHRR 1098 MOONBEAM 61J

LCHMN RAMPAGE 1098E

RBRTS MOONBEAM 629

Wow! A daughter of 61J by Rampage. She has 2 replacements in our program and they are outstanding producers: 91L's first calf sold as Lot 1 in the '05 sale to Scott Wagner for \$5,000. (He was sired by 29K!) Her '05 heifer stays here! 2N (by 29K) had one of our top bull calves (AWW 765) on her first calf.

Don't let this one get away. Dam has 102 MPPA.

EPDs	
BW	-0.1
WW	36
YW	61
M	17
TM	36
ST	11
Marb	-0.09
REA	-.23
Fat	.01
BW	69
WW	605
YW	856

56**OHRR 35K TOWA KIMA 62R**

OHRR/62R

2/16/05

100% 1A

1025370

SRR RED CANYON 213

LCHMN GRANDCANYON 1244G

BLUE RIDGE KIMA 950

OHRR 56H MACS CHOICE 35K

OHRR 41E ULTRA MACK 56H

RED HOWE MS CHOICE 75H

Here's another pedigree filled with great individuals: McIntosh, MS Ultra 41E, 75H, Logan and Grand Canyon. Red Canyon 213 is super in carcass qualities. Note birth to weaning spread. 62R has a .10 REA EPD and .08 IMF. We expect her actual scores will be very high.

EPDs	
BW	2.2
WW	39
YW	64
M	15
TM	34
ST	11
Marb	.08
REA	.10
Fat	.01
BW	77
WW	601
YW	828

57**OHRR 846 RAMS COPPER LASS 65R**

OHRR/65R

2/17/05

100% 1A

1025402

LCHMN RAMPAGE 1098E

BJR RAM 5162-3193

LEACHMAN AGNES 7632

MISS BHR JUSTICE 846

RD WESTERN JUSTICE

MISS RHP DEAL 331

One of our last females by Rampage – we offer just two and are keeping the other 3. They make excellent cows. 846 is from Broken Heart at Firesteel, SD, our partners on 29K, and she goes back to the original BJR genetics. Note the big spread from BW to AWW.

We have a lot of confidence in this female.

EPDs	
BW	2.2
WW	27
YW	48
M	17
TM	30
ST	10
Marb	-.11
REA	-.28
Fat	.00
BW	74
WW	640
YW	942

**Lot 57**

58

OHRR 023 CANYON JUANA 68R

OHRR/68R 2/19/05 100% 1A 1025342

SRR RED CANYON 213 | LCHMN GRANDCANYON 1244G
 BLUE RIDGE KIMA 950
 GMRA JUANA 023 | LCHMN RED SPREAD 1271 F
 GMRA JUANA 329

EPDs	
BW	0.0
WW	39
YW	73
M	22
TM	41
ST	13
Marb	.12
REA	.10
Fat	.01
BW	67
WW	625
YW	915

A great dam with a perfect udder – 103 MPPA. Average on 4 calves: BW 67 lbs.; AWW 653. A moderate phenotypically ideal cow that outdoes herself every year. Her 73N heifer was a high seller in '04 and 67P sold in Santa II '05 to Von Forell at \$3,300. A very maternal package with sire Red Canyon. Replacement female here!



59

OHRR 47L MS ADVNTGE 80R

OHRR/80R 2/23/05 100% 1A 1025378

4L ADVANTAGE R9N | PERKS ADVANCER 9088
 4L MS MAKE MY DAY R903
 OHRR COPPER FIREFLY 47L | LCHMAN COPPER ROB 1204D
 BADLANDS FIREFLY 202

EPDs	
BW	0.2
WW	27
YW	51
M	21
TM	35
ST	11
Marb	-.01
REA	-.04
Fat	.02
BW	71
WW	592
YW	826

One of 2 heifers in sale of R9N. His first female at auction started the Santa II last November and sold to Leslie Stokes-Peckham in TX at \$4,600. Dam's '04 bull sold for \$3,100 in Red Power '05 (Wts. 85 – 773 – 1377). This is a maternal-power pedigree that will produce.

60

OHRR 96N COPPER FAYET 83R

OHRR/83R 2/26/05 100% 1A 1025407

OHRR 3128 DAK COPPER 22N | OHRR DAKOTA COPPER 29K
 BJR EMU-MAR 319-6266
 OHRR 118 MS EXPLORER 96N | GLACIER EXPLORER 740
 MS CASEY 118

EPDs	
BW	-1.4
WW	17
YW	29
M	18
TM	26
ST	9
Marb	.04
REA	-.16
Fat	.00
BW	70
WW	590
YW	804

Wow, some great genetics in this pedigree – 29K and Explorer are known for their great females and dams: 3128 from BJR and 118 from Panhandle were two of our best foundation cows. 22N was a calving ease sire that sold in our '04 sale that had a 14.1 REA and an IMF score of 3.44.

61**OHRR 19H CANYON RIMA 9R**

OHRR/9R

1/21/05

98.1% 1B

1025355

SRR RED CANYON 213

LCHMN GRANDCANYON 1244G

BLUE RIDGE KIMA 950

OHRR MACS LELA 19H

RBRTS MCINTOSH II 344

LELAND RIMTOP 416-120B

The 19H cow never fails to give us a good one. Her 79N daughter was a top seller in the '04 sale to Choat CC in Nebraska. She had a 4.84 IMF, 10.3 REA, and 197 pelvic, plus eye appeal to burn. Red Canyon will double her carcass value. If you're looking for an A+ producer she's right here!

120B produced two supreme champions, a heifer at Agri-International in '94 over 11 breeds and a bull in Supreme Champion Pen of 3 at the 2000 Black Hills Stock Show.

EPDs

BW	1.5
WW	38
YW	62
M	18
TM	37
ST	11
Marb	.18
REA	.17
Fat	.01
BW	73
WW	631
YW	858

**Lot 61****62****OHRR 30J RAMS CLASSY 69R**

OHRR/69R

2/20/05

98.8% 1B

1025364

LCHMN RAMPAGE 1098E

BJR RAM 5162-3193

LEACHMAN AGNES 7632

OHRR 35B MACS LELA 30J

RBRTS MCINTOSH II 344

LELAND RIMTOP 416-35B

A 3/4 sister to Copper Vanna 3R on the dam side. 35B and 30J are great producers of pounds and dollars. 67R will be one of the last Rampage daughter to sell – her pedigree is loaded with outstanding cattle.

Help yourself to a good one!

EPDs

BW	0.2
WW	21
YW	35
M	15
TM	26
ST	10
Marb	-.13
REA	-.28
Fat	.00
BW	69
WW	558
YW	867

63**LLOYD SAKE GILL 28N-13R**

ESL/13R

1/31/05

100% 1A

1034830

LMG GILLS HORIZON 1551

LMG GILL HORIZON 5379

LMG LYDIA 727

ESL TESS SAKE 5H-3

LCHMN HEVN'S SAKE 1002F

SCHR CPR TESS 5H

This first calf heifer did a really good job on 13R. Note her YW EPD of 82 and WW of 50. Frame of 6.6 most likely. She has an MPPA of 104!

EPDs

BW	4.5
WW	50
YW	82
M	17
TM	42
ST	11
Marb	-.07
REA	-.09
Fat	.00
BW	82
WW	613
YW	

64**LLOYD MOON HAWK 19L-22R**

ESL/22R

2/20/05

100% 1A

1034827

BIEBER MIGHTY HAWK 9648

JHE CANYON HAWK 1062

BIEBER TINA 7375

LLOYD VICTORIA MOON 6601

BIEBER RED MOON 6042

LCHMN VICTORIA H1 141

This cow is always consistent. Note the quality of meat. Frame score is 6.5. Her MPPA is 103.

EPDs

BW	2.9
WW	36
YW	65
M	19
TM	36
ST	12
Marb	.05
REA	.24
Fat	.00
BW	86
WW	569
YW	

65**LLOYD HAWK 18J-33R**

ESL/33R

3/11/05

100% 1A

1034826

BIEBER MIGHTY HAWK 9648

JHE CANYON HAWK 1062

BIEBER TINA 7375

OHRR 9502 MACS LADY 18J

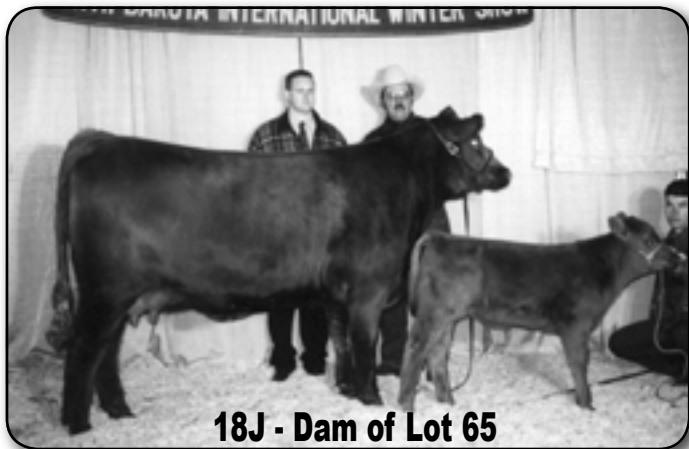
RBRTS MCINTOSH II 344

MESSMER OPHELIA 9502

The dam has been flushed so her MPPA is only 99. This heifer really looks good. She is sound in every aspect. Frame score will be 6.5. Very good quality numbers.

EPDs

BW	-0.2
WW	32
YW	56
M	15
TM	31
ST	10
Marb	.00
REA	.25
Fat	-.01
BW	78
WW	558
YW	

**18J - Dam of Lot 65****66****LLOYD HAWK 9721-30R**

ESL/30R

3/8/05

100% 1A

1034864

BIEBER MIGHTY HAWK 9648

JHE CANYON HAWK 1062

BIEBER TINA 7375

MESSMER ABIGALE 9721

BUF CRK CHF 824-1658

MESSMER ABIGALE 9053

This is a consistent cow that has always reared excellent calves. Her MPPA is 99. The dam has a frame score of 6.4. Buf Crk Chief is the leading Red Angus bull in export semen. Gentle cow and calf.

EPDs

BW	1.9
WW	32
YW	56
M	17
TM	33
ST	12
Marb	.06
REA	.11
Fat	.00
BW	91
WW	563
YW	

67**LLOYD HAWK 55K-52R**

ESL/52R

4/15/05

100% 1A

1034840

BIEBER MIGHTY HAWK 9648

JHE CANYON HAWK 1062

BIEBER TINA 7375

LLOYD MELODY KAMA

BJR MAKE MY DAY 981

BJR MELODY 1239-923

I raised the dam from an ET. Make My Day's sire has always been very consistent and provided great marbling. Note the balanced EPDs. Frame score will be 6.4. Her MPPA is 103.

EPDs

BW	0.7
WW	36
YW	64
M	19
TM	37
ST	11
Marb	.19
REA	.18
Fat	.00
BW	83
WW	591
YW	

68**LLOYD HAWK 02L-27R**

ESL/27R

2/25/05

100% 1A

1034811

BIEBER MIGHTY HAWK 9648

JHE CANYON HAWK 1062

BIEBER TINA 7375

SCHR MISS TESS CHIEF 2L

PBC DO202 6M H3554

SCHR TESS 5144 17J

This cow goes back to the very old breeding of PBC. She is sturdy and has a great carriage. Cow's frame score is 6.1, but with Hawk the heifer should be about 6.3.

EPDs

BW	1.8
WW	33
YW	55
M	14
TM	31
ST	11
Marb	.05
REA	.06
Fat	-.01
BW	85
WW	571
YW	

69**LLOYD ROB 25K-44R**

ESL/44R

3/30/05

100% II

1034829

BIEBER MIGHTY HAWK 9648

JHE CANYON HAWK 1062

BIEBER TINA 7375

LLOYD BELGA 30-0

LMN COPPERROB 1089G

ALBERG MISS BELGA 175

The dam, 25K, carries some white from her dam I bought in Minnesota. This causes her calves to exhibit white in front of the navel, thus she is called a #II. The heifer calf also carries some white and is a II – but she has great cow potential. Her frame could be a 6.6. Dam's MPPA is 105.

EPDs

BW	1.5
WW	39
YW	67
M	23
TM	43
ST	11
Marb	.02
REA	.24
Fat	.00
BW	87
WW	658
YW	

70**LLOYD HOBO 34G-17R**

ESL/17R

2/7/05

100% 1A

1034833

ESL MONARCH KING 31-3

BJR KING OF KINGS 942

OHRR MONARCH KARIN 56F

BGD MISS MONU 34G

CFRA MONU 2060

BGD MISS HOBO 21E

This is a tall heifer. Her dam is not tall at a frame of 6.0. Monarch King is a big bull we sold to Brian Anderson of Sharon, ND. The heifer might have a frame of 6.5. The dam has an MPPA of 104.

EPDs

BW	2.7
WW	33
YW	55
M	18
TM	34
ST	11
Marb	.02
REA	-.12
Fat	.01
BW	89
WW	568
YW	

71

LLOYD OPHELIA RAMBO 18J-34R

18J/34R

3/14/05

100% 1A

1054540

RED CFCC 170K

FCC RAMBO 502

LARSON FLO-MARIE 185

OHRR 9502 MACS LADY 18J

RBRTS MCINTOSH II 344

MESSMER OPHELIA 9502

This heifer takes pride in having Rambo 502 as her granddad – and McIntosh II is no slouch. He has many females scattered throughout the United States. Olson's Ophelia has raised many super cattle. Flo Marie is a \$50,000 cow herself!

EPDs

BW	-0.2
WW	29
YW	44
M	17
TM	31
ST	10
Marb	.01
REA	-.07
Fat	.00
BW	74
WW	553
YW	

72

LLOYD BODACIOUS 01M-46R

ESL/46R

3/31/05

100% 1A

1034815

BIEBER MIGHTY HAWK 9648

JHC CANYON HAWK 1062

BIEBER TINA 7375

LLOYD LADY LUCK 15-2

TKP BODACIOUS 693

OHRR 9502 MACS LADY 18J

Nice heifer! Frame score of 6.5. Lady Luck carries a lot of flesh – and her quality goes back to Glacier Logan 210. Combining the quality values of Hawk and Lady Luck provides above average values. This is some heifer!

EPDs

BW	2.8
WW	41
YW	69
M	17
TM	38
ST	12
Marb	.08
REA	.25
Fat	.00
BW	78
WW	626
YW	

73

LLOYD HAWK 5H-55R

ESL/55R

4/23/05

100% 1A

1034812

BIEBER MIGHTY HAWK 9648

JHE CANYON HAWK 1062

BIEBER TINA 7375

SCHR CPR TESS 5H

FORSTER PRESIDIO 5144

RED TESS 3171

This cow has a 105 MPPA. The heifer is young but has grown well. Her frame score will likely be 6.5+.

EPDs

BW	3.0
WW	39
YW	64
M	18
TM	38
ST	11
Marb	.01
REA	.09
Fat	.00
BW	95
WW	614
YW	

74

JLRA MIMIS OPTION R17

R17/JLRA

2/12/05

100% 1A

1030711

MESSMER RED OPTION 9902

BUF CRK CHF 824-1658

MESSMER ABIGALE 7925

BNDV KW'S MIMI

BIEBER KICKING WOLF6387

BIEBER MIMI 6170

Another dark cherry moderate framed heifer. The sire, Red Option, is a great son of Buffalo Creek Canyon. This girl's dam is an offspring of the great Robin Hood. She has great EPDs!

EPDs

BW	2.6
WW	41
YW	66
M	8
TM	28
ST	12
Marb	.09
REA	.04
Fat	.00
BW	92
WW	641
YW	846

75**JLRA ANGEL RIKA R12**

R12/JLRA

1/26/05

100% 1A

1030708

BADLANDS MR BEEF 805

HLH BUSTER 406 603

BADLANDS KEEPSAKE 632

SCTT ANGEL

GLACIER LOGAN 210

SCTT RIKA

A show heifer prospect out of a dam that still holds the Minnesota Great Northern Red Angus Sale record. The AI sire, Mr. Beef, is a National Grand Champion and continues to be one of the elite growth sires in the breed. Look at her great EPD numbers!

EPDs	
BW	3.3
WW	48
YW	82
M	17
TM	41
ST	12
Marb	.19
REA	-.19
Fat	-.02
BW	98
WW	710
YW	950

**Mr Beef - Sire of Lot 75****76****JLRA ROBIN GIRL R01**

R01/JLRA

12/31/04

100% 1A

1030699

BFCK CHEROKEE CNYN 4912

BUF CRK CHF 824-1658

MRM 1431 8611 9109

JLRA ROBIN SAKE 306

LCHMN HEVN'S SAKE 1002F

BIEBER DAPHNE 6067

This smaller framed sweet little heifer is packed with performance on both sides. Take a good look. The sire, Cherokee Canyon, is the number one sire used in the Red Angus breed for the year 2004. A Hevn's Sake daughter, she speaks for herself!

EPDs	
BW	-1.8
WW	31
YW	62
M	15
TM	31
ST	14
Marb	.09
REA	.40
Fat	.00
BW	72
WW	566
YW	768

77**JLRA PERFECTION R13**

R13/JLRA

1/29/05

100% 1A

1030704

BJR MONU 4X-303

RED SSS MONU4X 237C

RCRA SAMANTHA

BIEBER TOPPER 4205

BIEBER PERFECTION 3494

BIEBER TOPPER 2449

This AI heifer is definitely an excellent replacement heifer! It is one that I would prefer and I would recommend. The sire, BJR Monu 4X, is one of the breeds elite curve benders. His progeny have topped sales across the country. The dam has produced top calves for us for 12 years.

EPDs	
BW	-0.6
WW	30
YW	52
M	13
TM	28
ST	13
Marb	-.08
REA	.03
Fat	-.03
BW	82
WW	615
YW	784

78**JLRA STARLETT R02**

R02/JLRA

12/28/04

100% 1A

1030695

VGW RATTLER 908

SHOCO SIR ROBIN

VGW DORA-SHIP 9348

CBR DYANA 5703-284

CBR MR DYNAMIC 316-04

CBR STARLET 957-818

This easy fleshing heifer has total performance written all over her. The dam, CBR Dayna, was purchased at the North Dakota Red Select and has produced heifers that sold at the Minnesota Beef Expo and the Minnesota Great Northern. A great combination with the sire VGW Rattler 908.

EPDs

BW	2.5
WW	47
YW	77
M	6
TM	29
ST	10
Marb	-.01
REA	.01
Fat	.00
BW	88
WW	634
YW	849

79**JLRA LADY DEE R16**

R162/JLRA

2/1/05

100% 1A

1030697

CBR RAM 3109-936

BHR RAMBO 862B

CBR AUDREY 936-45

JLRA LADY

JLRA DURANGO

BNDV KW'S MIMI

This dark, cherry red heifer is from our herd sire, CBR Ram 3109-936. Her dam is a perfect uddered and heavy milking cow. A good replacement heifer!

EPDs

BW	-3.4
WW	13
YW	34
M	15
TM	22
ST	10
Marb	.02
REA	-.05
Fat	.00
BW	65
WW	508
YW	676

Hunter Gerner**"Ready For Action"****Red Angus Replacements****for Professional Cattlemen****Pro-Cow**
♀**Ask a Red Angus breeder
about Pro-Cow**

The Hereford Advantage

Hereford bulls cross very well with Angus base cows to produce the beef industry's most ideal females – the F1 baldy. To gain true efficiency and reap the benefits of hybrid vigor use a Hereford bull on your black females.

Consider this:

- Hereford bulls last longer
- Herefords have #1 disposition
- Herefords are efficient and hardy in the north

Hereford Average EPDs for 2004 and 2005 born calves.

<u>BW</u>	<u>WW</u>	<u>YW</u>	<u>M</u>	<u>M&G</u>	<u>SC</u>	<u>Fat</u>	<u>REA</u>	<u>IMF</u>
3.7	38	64	14	33	0.7	.001	.09	.00

BW = Birth Weight
 WW = Weaning Weight
 YW = Yearling Weight

M = Maternal Milk
 M&G = Milk plus Growth
 SC = Scrotal Circumference

Fat = Back Fat Thickness
 REA = Rib Eye Area
 IMF = Intramuscular Fat %

Averages for profit indexes: BMI=15.55; CEZ=14.47; BII=15.29; CHB=15.81

Kodiak . . . “Carcass Bull Supreme”



VCR East Kodiak 506E is a Trait Leader for 4 important and highly heritable traits: Ribeye, Weaning Weight, Yearling Weight, and Scrotal. He ranks in the top 5% for REA and the top 25% for Marbling – a rare combination. Kodiak is one of the breed's premier sires.

In January 2005, the American Hereford Association released a set of Economic Selection Indexes. These profit indexes enable Hereford breeders and their commercial bull customers to select sires that maximize profit under commercial production situations.

The first is a Baldy Maternal Index (BMI) which is an index to maximize for commercial cow/calf producers who use Hereford bulls in rotational crossbreeding programs on Angus based cows and heifers. Retained ownership of calves through the feedlot phase of production is assumed, with fed cattle marketed on a Certified Hereford Beef, LLC pricing grid. KODIAK is in the Top 1% of the breed for this BMI Profit Index.

The second is a Calving Ease Index (CEZ) that is similar to BMI except Hereford bulls are mated only to yearling heifers. This index has increased emphasis on direct and maternal calving ease compared with the other indexes.

Another is the Brahman Influence Index (BII) which is similar to the BMI but uses Hereford bulls in a rotational program with Brahman based cattle rather than Angus. This Index places greater emphasis on traits deficient in Brahman crossed cattle such as fertility and age at puberty, and less on traits that are more acceptable in those cattle, such as growth and calving ease. Kodiak is also in the Top 1% for this index.

The Certified Hereford Beef Index (CHB) is a terminal sire index, where Hereford bulls are mated to British-cross cows and all offspring are sold as fed cattle on a CHB LLC pricing grid. KODIAK is also a leader here in the top 5% of the breed.

Olson Hereford Ranch Lots 80-91

North Dakota's oldest active Hereford breeder. We began in 1936 and have been leading the way in Polled genetics for the past 40 years. Our sale offering has "something for everyone". Our bulls are backed by strong, productive cows – most of them are pictured. Many of our bulls are well suited for use on heifers. We are a Johne's Test Negative - Level One herd. Most of our bulls are in the elite percentiles of the breed for Weaning, Yearling, Scrotal, Ribeye Area and CHB Index.



80

OHR HARD RIGHT 10M 31R

31R/OHR

1/30/05

P42584650

RJH MOMENTUM H45

3D NO LIMIT 09E

JR Y168 GLORIA C104

OHR MATTIE 91F 10M

VCR EAST KODIAK 506E

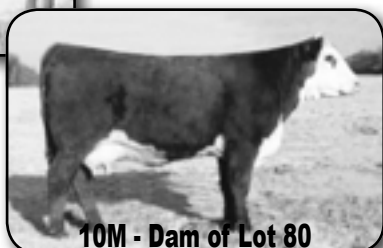
TA-BAR-E-L-740C REBA 91F

EPDs

BW	3.6
WW	68
YW	109
M	23
M&G	57
SC	1.7
Fat	-.003
REA	.39
IMF	-.06
BW	93
WW	802
YW	1356

Sale Feature! High performance and fully pigmented with good muscle and bone structure. Dam is an excellent young cow who's first calf topped our sale year to Prause P.H. in Texas. \$ Indexes = BMI 23, CEZ 14, BII 20, CHB 29. Top 1% of breed for WW, YW, M&G, SC, and CHB. Top 3% for BMI and REA. Top 10% for BII and Milk. Dam's WWR on 2 bull calves is 116!

Terms to be announced.



16R/OHR

1/24/05

P42584661

VCR EAST KODIAK 506E

WTK 55Y BOND 75A

VCR MIS FLO JO 849X

OHR SUSIE 23G

WTK 21N SLAM ET 52E

EO 19W MS SLEW 23Z

Long, thick performance son of our carcass sire, Kodiak. Mother is a Dam of Distinction whose sons sold for \$3,800 and \$3,900 in the past 2 sales. \$ Indexes = BMI 24, CEZ 14, BII 25, CHB 18. Top 1% for BII, Top 2% for BMI and Top 15% of YW. Top 10% of the breed for WW, Scrotal and Ribeye Area.

EPDs

BW	4.0
WW	47
YW	79
M	7
M&G	30
SC	1.5
Fat	-.006
REA	.30
IMF	-.09
BW	84
WW	657
YW	1194



Lot 81



Kodiak - Sire of Lot 81

26R/OHR

1/29/05

P42584717

VCR EAST KODIAK 506E

WTK 55Y BOND 75A

VCR MIS FLO JO 849X

TA-BAR DON 411E

HAROLDSON RAIDER P183 2Z

TA-BAR DONNA 411C

Heifer Bull! Complete bull with good muscle, rib, pigment, and a super structure. Dam is a picture perfect cow whose bulls have sold very well in our last 2 sales. \$ Indexes = BMI 21, CEZ 13, BII 22, CHB 18. Sire is a trait leader for WW, YW, Scrotal and REA. 26R is the Top 4% for SC; top 10% for BMI and BII; Top 15% for WW; Top 20% for REA and Top 25% for YW.

EPDs

BW	4.0
WW	46
YW	74
M	11
M&G	34
SC	1.3
Fat	.007
REA	.22
IMF	-.02
BW	82
WW	612
YW	1132



Lot 82



411E - Dam of Lot 82

17R/OHR

1/25/05

P42584664

PW VICTOR BOOMER P606

REMITALL BOOMER 46B

PW VICTORIA 964 8114

OHR QUESTIVA 34H

MOHICAN QUEST 26C

EO 817 VICTORIA 106Y

Long bodied, heavy muscled, easy doing, dark red and very sound structured! Dam's WWR is 106.5. Granddam is Dam of Distinction and great-granddam is a Benchmark Dam. Twin with lot #84, 34H raised them both. \$ Indexes = BMI 15, CEZ 7, BII 16, CHB 20. Top 10% of breed for WW, YW, M&G, SC and REA. Top 15% for milk and CHB.

EPDs

BW	4.4
WW	52
YW	87
M	21
M&G	47
SC	1.2
Fat	.007
REA	.33
IMF	-.01
BW	75
WW	669
YW	1184

18R/OHR

1/25/05

U42584737

PW VICTOR BOOMER P606

REMITALL BOOMER 46B

PW VICTORIA 964 8114

OHR QUESTIVA 34H

MOHICAN QUEST 26C

EO 817 VICTORIA 106Y

Moderate framed, well muscled, easy fleshing twin to Lot 83 bull. Mother raised them both to 205 for a total weight of 1224. \$ Indexes = BMI 15, CEZ 7, BII 16, CHB 20. Top 10% for WW, YW, M&G, SC, and REA; top 15% for milk and CHB.

EPDs

BW	4.4
WW	52
YW	87
M	21
M&G	47
SC	1.2
Fat	.007
REA	.33
IMF	-.01
BW	66
WW	555
YW	1036

44R/OHR

2/3/05

P42584697

PW VICTOR BOOMER P606

REMITALL BOOMER 46B

PW VICTORIA 964 8114

STAR T BONITAA6 68G

WTK 55Y BOND 75A

WILLVIA MISS VICTORIAA6

Well muscled, moderate framed, dark colored bull with good rib shape and pigment. Grandmother, A6, is a Benchmark Dam and his dam was Calf Champion Heifer in Kansas City in 1997. There are generations of great uddered, heavy milking females both top and bottom of pedigree. \$ Indexes = BMI 15, CEZ 6, BII 17, CHB 15. Top 4% for REA; top 15% SC; top 25% WW and M&G; and top 30% YW.

EPDs

BW	5.1
WW	43
YW	71
M	17
M&G	39
SC	1.1
Fat	.001
REA	.36
IMF	-.07
BW	95
WW	638
YW	1147

71R/OHR

2/21/05

P42621368

DL DIGGER 15G 44U

BT CL DOMINO 15G

DL VICTRESS 312P

RST MISS BOND 16D

WTK 55Y BOND 75A

RST JAQUI 12Z

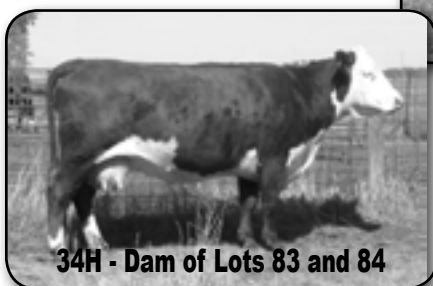
Dam is the famed "Bondy" 16D cow of Gene Millers in IL who has a WWR in production of 127. She is the mother of many herd sires and grandmother of GQ. He's dark colored with good thickness and performance. Here is time tested old school genetics. \$ Indexes = BMI 9, CEZ 5, BII 12, and CHB 10. Top 10% for Fat.

EPDs

BW	6.4
WW	37
YW	66
M	17
M&G	36
SC	.7
Fat	-.009
REA	.06
IMF	-.14
BW	74
WW	760
YW	1263



Lot 83



34H - Dam of Lots 83 and 84



Lot 85



68G - Dam of Lot 85



Lot 86



16D - Dam of Lot 86



87**OHR CANYON 406E 72R**

72R/OHR

2/21/05

P42584716

RANGELINE 19H CANYON 14M

FHF 8403 STARBUCK 19H

SVPH AMELIA 648G

JAK 218Y RARITY 406E

CIRCLE-D MCGYVER 218Y

CIRCLE-D EVNING RYDE 951X

EPDs

BW	7.5
WW	56
YW	85
M	11
M&G	39
SC	1.4
Fat	-.016
REA	.15
IMF	.00
BW	104
WW	671
YW	1152

An attractive bull from our performance sire – Canyon and a very good productive McGyver daughter with a 106 WWR. The granddam, 951X, was Canadian National Champion Female with a calf at side. Canyon had 17.2 REA and was a double marker for the marbling gene. \$ Indexes = BMI 22, CEZ 11, BII 22, CHB23. 72R is in the top 1% for WW and top 5% for YW, SC, Fat, BMI, BII and CHB.

88**OHR MONTANA 8E 66R**

66R/OHR

2/17/05

P42584646

JB 943 MONTANA HERMAN 357M

J-B ANCHOR HERMAN 37H

JB L1 678 MISS NED 943F

CEO VICTORIA 8E

TA-BAR ONE TIME 076C

CEO MS VJ BAN 7P

EPDs

BW	3.5
WW	38
YW	65
M	13
M&G	32
SC	.5
Fat	.001
REA	.13
IMF	-.04
BW	77
WW	622
YW	1109

Stout, well made bull with good muscle and rib. Mother is a Dam of Distinction with a 106.5 WWR on 8 calves. \$ Indexes = BMI 13, CEZ 13, BII 13, and CHB 14. Maternal sister was a top seller at the 2001 World Beef Expo Sale at \$5,200. Maternal brother was Reserve Champion bull at 2000 Minnesota State Fair.

89**OHR RIGHT ON 57N 93R**

93R/OHR

3/14/05

P42584695

RJH MOMENTUM H45

3D NO LIMIT 09E

JR Y168 GLORIA C104

OHR NIKITA 69F 57N

VCR EAST KODIAK 506E

OHR QUESTIVA 69F

EPDs

BW	4.3
WW	63
YW	99
M	19
M&G	50
SC	1.6
Fat	-.003
REA	.39
IMF	-.05
BW	84
WW	719
YW	1224

Good performance and length with smooth structure and nice pigmentation. Dam is a great uddered two-year-old from a Dam of Distinction. \$ Indexes = BMI 23, CEZ, 14, BII 21, CHB 27. Top 1% of breed for WW, YW, M&G, SC, and CHB. Top 3% for REA and BMI; top 10% for BII Index. Should also work for heifers.

90**OHR RIGHT NOW 8964 92R**

92R/OHR

3/11/05

P42584719

RJH MOMENTUM H45

3D NO LIMIT 09E

JR Y168 GLORIA C104

SADDLE-VALLEY 7C MEG 896H

KLNDIKE 500Z FEDRTION 7C

SVR 777Y MS RUSHMORE 344F

EPDs

BW	1.4
WW	57
YW	91
M	14
M&G	43
SC	1.3
Fat	.002
REA	.30
IMF	-.03
BW	94
WW	684
YW	1104

Attractive, smooth fronted bull that has good length. Dam is a high volume, good uddered cow with a 102 WWR in our herd and a 1.7 BW EPD. \$ Indexes = BMI 23, CEZ, 17, BII 20, CHB 25. Top 1% of breed for WW and CHB. Top 10% or better for BW, M&G, SC, REA, BMI, and BII.



Lot 87



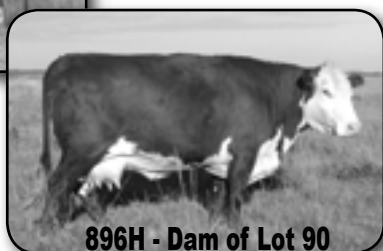
Lot 88



Lot 89



Lot 90



896H - Dam of Lot 90

78R/OHR

2/23/05

P42584696

RJH MOMENTUM H45

3D NO LIMIT 09E

JR Y168 GLORIA C104

HAROLDSON'S 45H CHRISTINA 64L

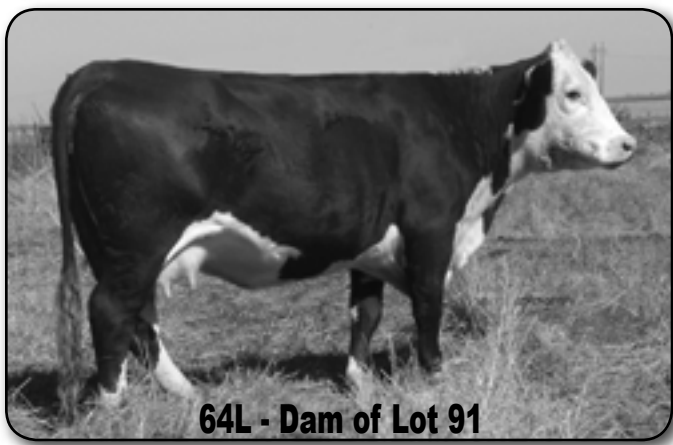
LLL NUFF SAID 45H

WALPOLE LUCKY LADY 2E

EPDs

BW	1.3
WW	56
YW	88
M	23
M&G	51
SC	1.1
Fat	-.007
REA	.32
IMF	-.13
BW	80
WW	694
YW	991

A short marked, smooth made bull that is taylor made for use on heifers. Dam is a moderate framed super uddered young cow with 109 WWR on 3 calves. Last year her heifer calf sold for \$9,000. \$ Indexes = BMI 17, CEZ 14, BII 15, CHB 22. Top 1% WW, M&G; top 4% YW; top 15% SC and Fat.



**Maternal sister to Lot 91
Class winner 2005 Indiana State Fair
for Shelby and Lane Zink.**

Purchase a Red Power bull and receive:

1. \$50 off if you take him home from the sale.
– Bring a neighbor and a trailer to multiply the savings!
2. Free delivery up to 300 miles.
– Further distances at cost to central delivery points.
3. Free wintering on bulls over \$2,500.
– We will keep the bulls at no cost until April 1.
4. More bull value for your dollar!
– Nowhere else will you find this many top end Red Angus bulls at affordable prices.

- Thanks for Coming -

- Catalog prepared by -



Virtual Solutions
Kseda Rae Kuehne
946 7th Ave NW
Valley City, ND 58072
701.845.4317
krkuehne@msn.com

Graphic Design
Web Design
Software Training
Sale Catalogs
Brochures ~ Flyers
Newsletters
Greeting Cards

"Providing solutions to help you succeed"

- Catalog printed by: 3D Printing, Fargo, ND -

**Red Power
Performance Bull Sale**

**16068 24th St SE
Argusville, ND 58005**

**Want More?
We've Got It!**



- Performance
- Muscling
- Carcass Traits
- Maternal Excellence
- Fertility
- Sound Structure
- Calving Ease
- PROFITABILITY!

Lot 10

Return Service Requested

**PRSRTD FIRST CLASS
U.S. Postage**

PAID

**Permit No. 315
Fargo, ND 58102**

“Put the Red Factor to work for you!”